
GLM050 GL Account Maintenance by Profit Centre

Overview

This option allows maintenance of existing general ledger accounts within the specified profit centre for an individual company. It can also be used to generate full general ledger accounts according the Account Structure Definition of Profit Centre, Major Account and Minor Account.

This function is subject to **User Access** validation.

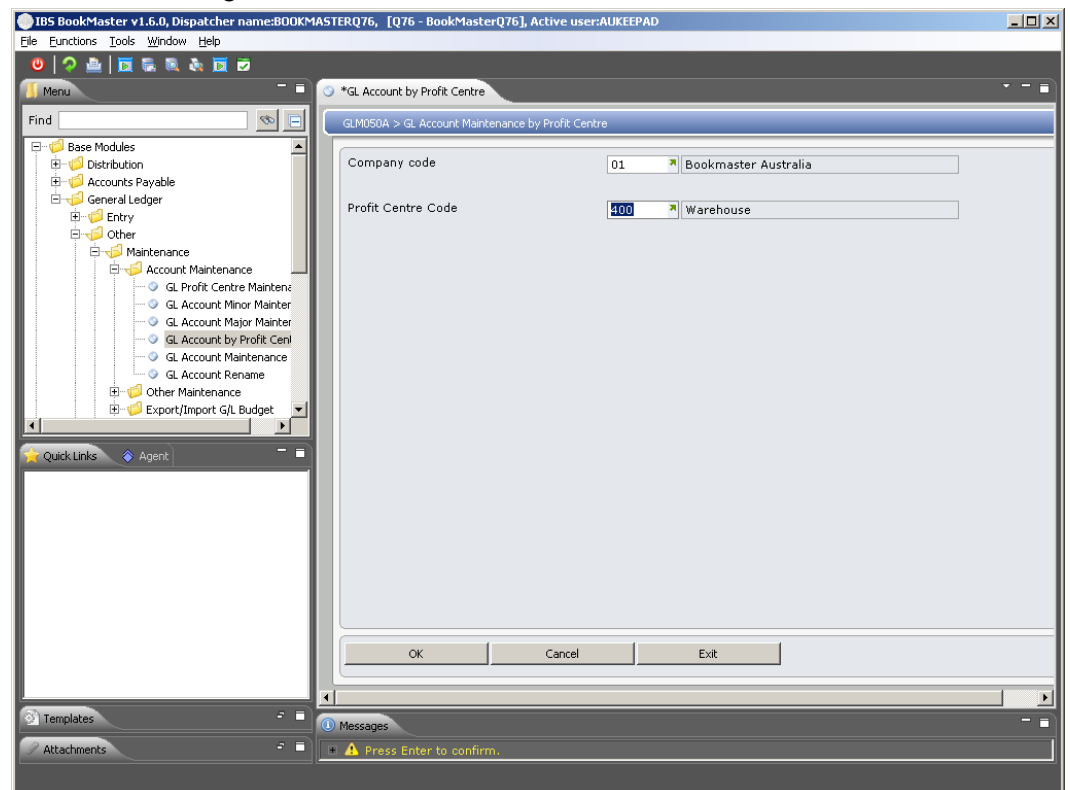
Examples

This section illustrates examples concerning:

[Example 1: Selectively Create Accounts for a Profit Centre](#)

Example 1: Selectively Create Accounts for a Profit Centre

1. Select menu option **GL Account by Profit Centre** from Base Modules> General Ledger> Other> Maintenance> Account Maintenance menu.



Relevant fields

Profit centre code

Account sections are broken up into: A=Profit Centre, B=Major Account, and C=Minor Account. Each of these sections can be a maximum of 6 characters separated by a delimiter. Only certain punctuation marks can be used to delimit the account sections. These are commas (,), full stops (.) and a dash or

hyphen (-). **TMSGL/ACTS-DEF** is where a user defines their account structure.

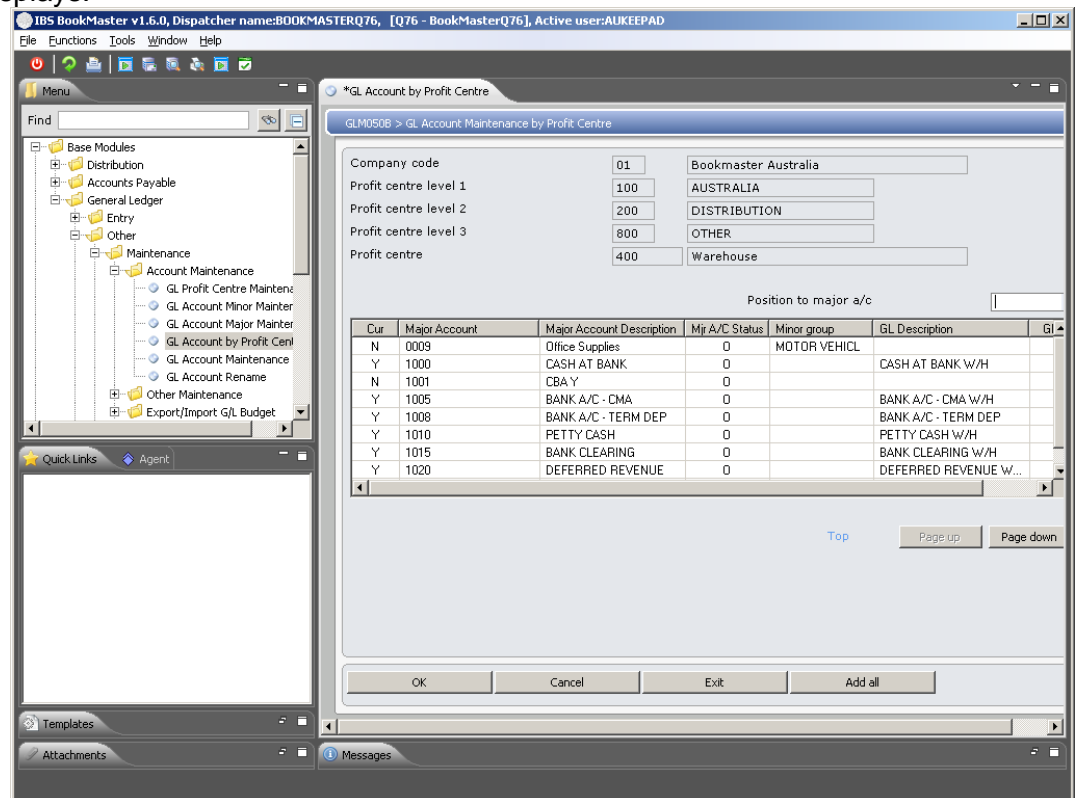
In GL Account Maintenance by Profit Centre **enter the Profit Centre** code within the selected company. If an invalid **entry is made the message Profit centre does not exist on master file** displays.

In Profit Centre Maintenance the Profit Centre section of the account number is entered here. This not only represents a Profit Centre but a Cost Centre as well. Note that a Profit Centre needs to be created for Balance Sheet Accounts so these accounts can be grouped for reporting.

As an example, Profit Centre 103 can be created.

2. Enter the Profit Centre for which accounts are to be entered.

The Profit Centre has been entered a complete list of valid Major Accounts displays.



An Option indicating what to do with the list of Major Accounts Numbers needs to be selected. The Options available on this screen are:

- **Add** a major account to a profit centre. One general ledger account is automatically created using the profit centre and major account description. Refer to **Selectively Create General Ledger Accounts for a Profit Centre** for details.
- **Change** to maintain an existing profit centre and major account combination or to create an account manually.
- **Close** an existing account.

Add all creates all the account combinations and is covered in the documentation under section Automatically Generate General Ledger Account for a Profit Centre.

Automatically Generate General Ledger Accounts for a Profit Centre

1. Follow the process as outlined in the section **Selectively Create General Ledger Accounts for a Profit Centre** but instead of using the Options column to select individual Major Accounts to be used, click **Add all**.

A list of Major Accounts Numbers displays.

Once **Add all** is selected, the message **Mass creation of accounts for this profit centre in progress. Please wait...** displays.

When the accounts have been created the message **Mass create of GL accounts for this profit centre complete** displays.

2. All the Major Accounts have **Y** in the *Cur* column and there is a default *GL account Description* for each Major Account. This implies all these accounts are now Active or Current and available for use.
3. An account with the **Cur** flag set to **N** can be accessed for changes that results in the **Cur** flag changing to **Y** indicating the account is Current or Active.