
DSO513 Stock Obsolescence Journal Creation

Overview

The Generate General Ledger Journals program reads the Stock Obsolescence Value file (DSIWV00P) and posts the obsolescence value to the General Ledger.

Note: This process should NOT be run multiple times as it will duplicate the posting in the General Ledger.

The value posted is the differential between previous month obsolescence value and current month obsolescence value from an ISBN level analysis. The journals are summarized by GL account for posting. These journals are posted through the normal GL interface.

Examples

This section illustrates examples concerning:

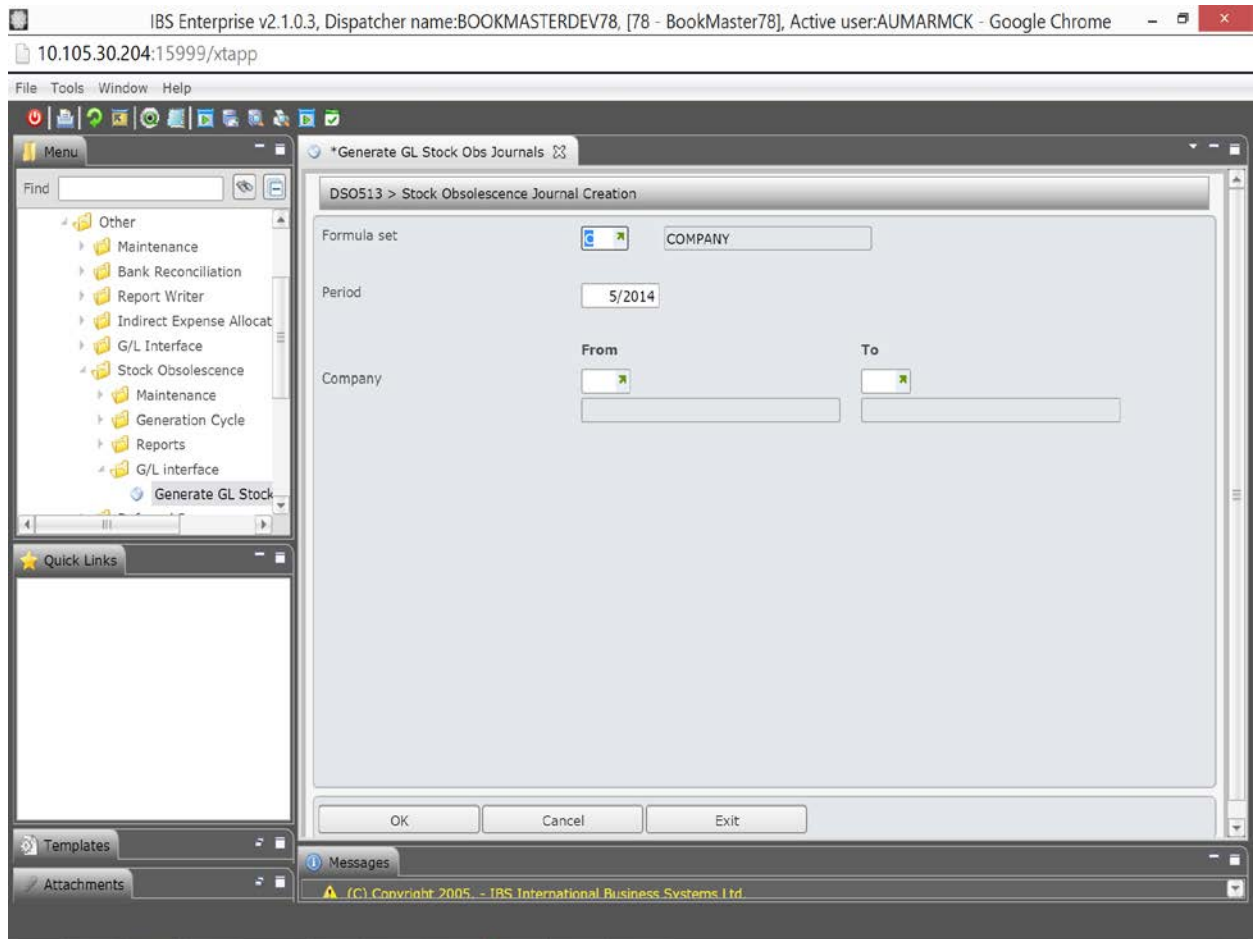
[Example 1: Generate G/L Journals](#)

Example 1: Generate G/L Journals

This example describes how to generate G/L journals.

1. Select menu **Generate GL Stock Obs Journals** from Base Modules>General Ledger>Other>Stock Obsolescence>G/L Interface menu.

DSO513 Stock Obsolescence Journal Creation main panel is displayed.



Relevant Fields

Formula Set

The formula set is used to identify the stock write down calculation, for example, company or tax. Enter the code for the existing formula set to be maintained. If adding a new formula level, the code must already exist on **TMSDS/IWD-SET**.

In Stock Write Down Provision Generation this is the formula set for the provision to be generated.

Period

This is obsolescence period which defaults to current processing period but can be overridden. The current General Ledger Accounting Period (and sales period in the Daily Sales Report) defaults from **TMSG/PERIOD**. The default is updated by the month end processing routine.

2. Key in all required fields and click **OK** to confirm the selection. Job processing panel is displayed.
3. Change the job queue if required and select to run the process in batch or real time.
4. Click **OK** to confirm the selection. General Ledger journals are created. Once the journals have been generated and the General Ledger End of Day run, the postings can be viewed in the General Ledger Inquiries.

