
DSM429 Stock Obsolescence GL Account Definition

<i>Overview</i>	This maintenance program provides the definition for the General Ledger Stock Obsolescence provision Journals. Journals are generated by companies.
<i>Purpose</i>	This panel allows you to: Add/Maintain/Delete G/L stock obsolescence provision journals.

Examples

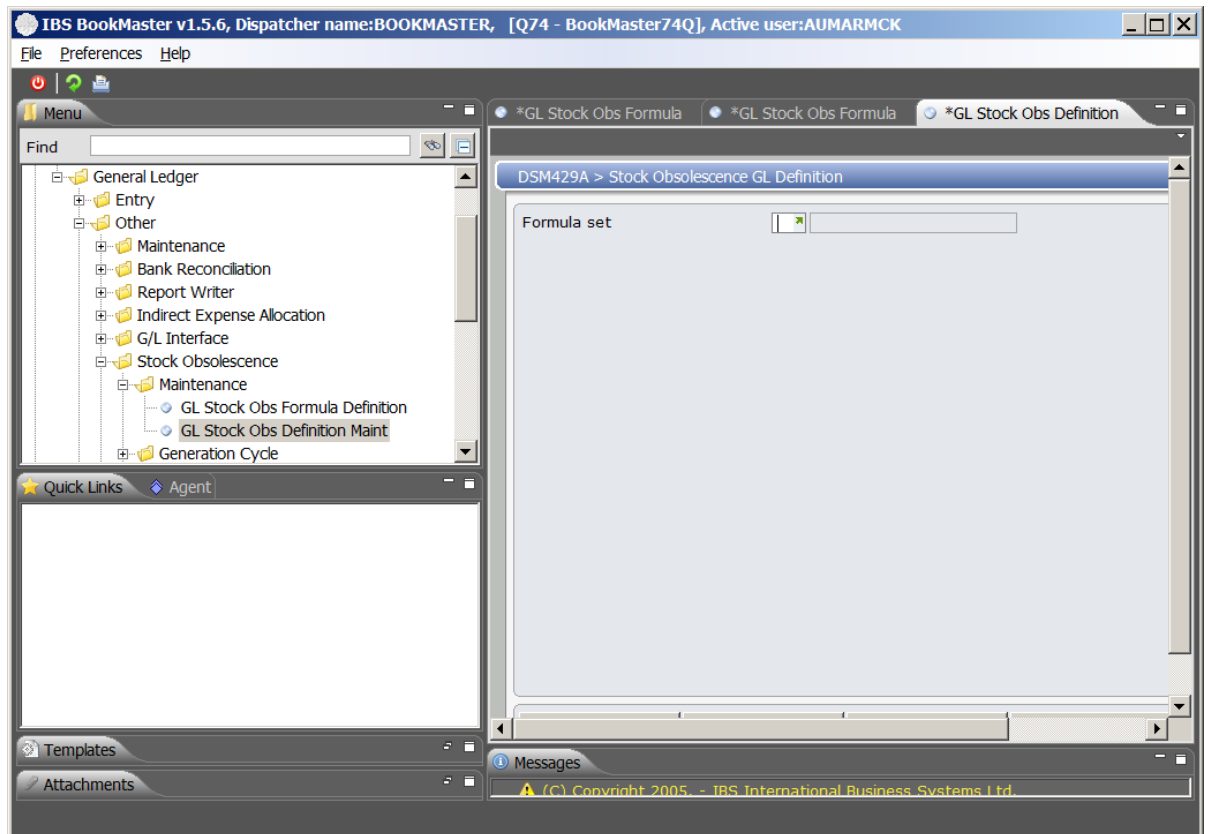
This section illustrates examples concerning:

[Example 1: Add an Obsolescence G/L Definition](#)

Example 1: Add an Obsolescence G/L Definition

This example describes how to add stock obsolescence G/L definition.

1. Select menu option **GL Stock Obs Definition Maint** from Base Modules>General Ledger>Other>Stock Obsolescence>Maintenance menu. Following panel is displayed.

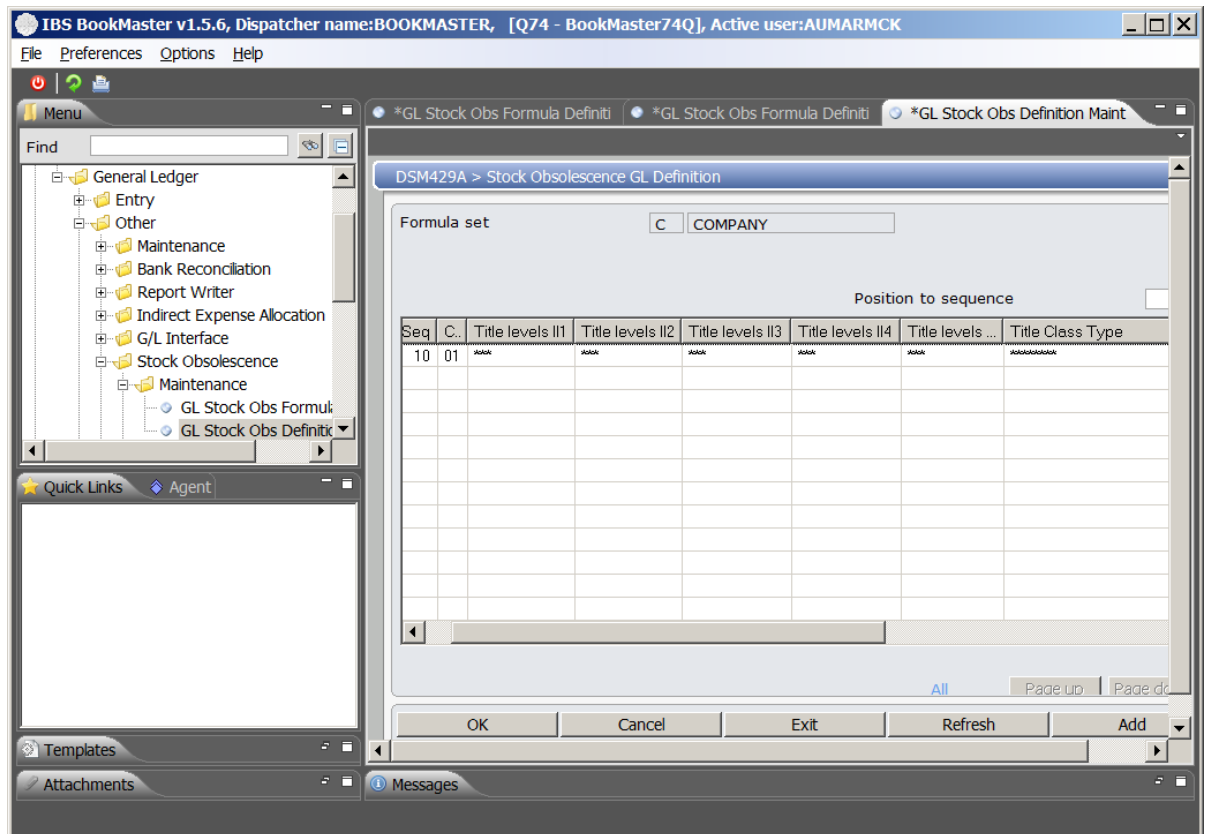


Relevant Fields

Formula set

The formula set is used to identify the stock obsolescence calculation, for example, company or tax. Stock obsolescence G/L definition is added for this formula set.

2. Select the formula set for which G/L definition is to be added and click **OK** to confirm the selection. Following panel is displayed.



Functions

Add

Access Stock Obsolescence GL Definition in add mode to add new definition for the selected formula set.

Options

Change

Access Stock Obsolescence GL Definition in change mode to maintain existing definition.

Copy

Access Stock Obsolescence GL Definition in change mode to copy existing definition attributes as new definition attributes.

Delete

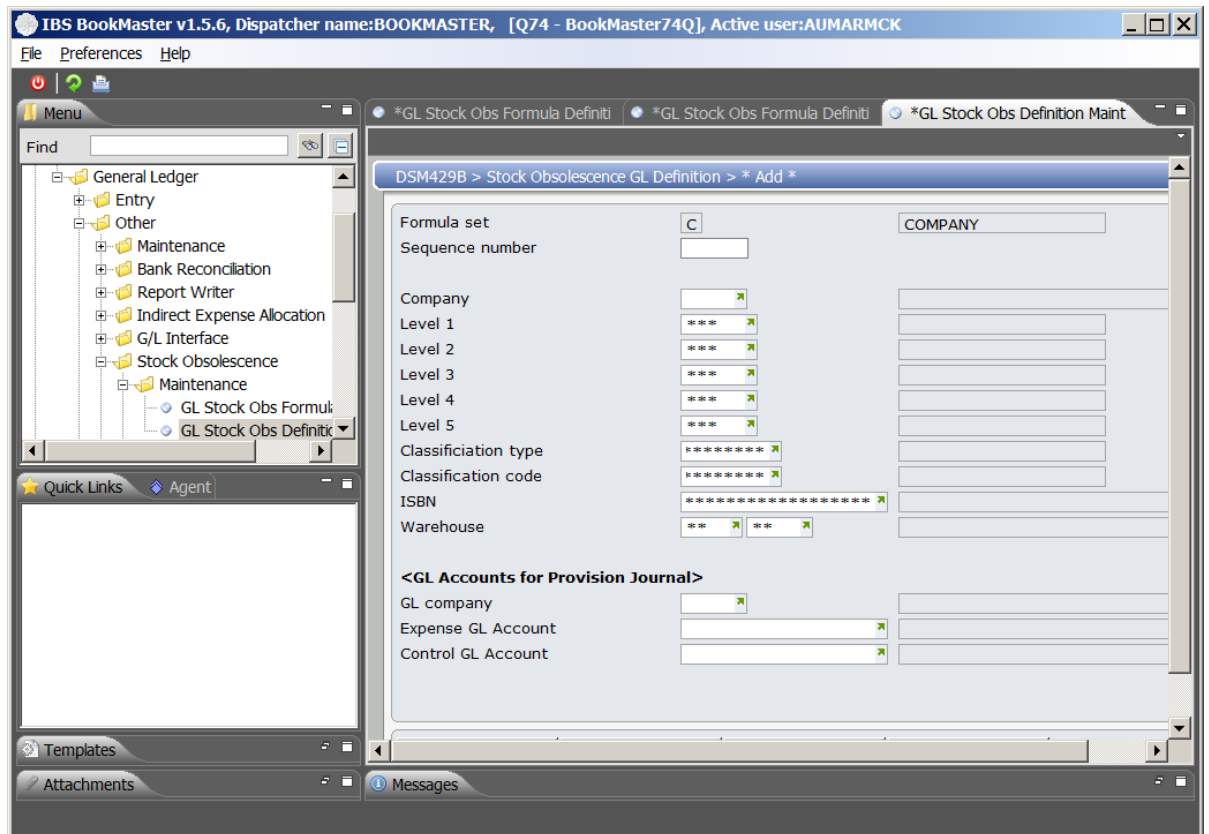
Access Stock Obsolescence GL Definition in delete mode to delete particular definition from the system.

Display

Access Stock Obsolescence GL Definition in display mode to show selected definition details.

3. Click function **Add**. Following panel is displayed.

Note To change, display or delete a definition, select the definition and click on the corresponding option.



Relevant Fields

Sequence
number

This number uniquely identifies every GL definition. No two definitions can have same sequence number.

Company

This is company for which GL definition is to be added. This is mandatory entry.

Item Level 1 – 5

These are the item hierarchy levels to be used in the GL definition.

Item

This is the item to be used in GL definition.

Warehouse

This is the warehouse to be used in GL definition.

GL company

This is company number to which GL account transactions are to be posted.

Expense GL
Account

This is the Expense GL Account for Provision Journals. It is the GL account to which the obsolescence provision will be posted at the expense level within the profit and loss.

Control GL
Account

This is the Control GL Account for Provision Journals. This control account is the balance sheet account to which the total obsolescence provision will be coded.

4. Key in all the required fields and click **OK** to confirm the entries. Value '*' against the fields represent wildcards. New stock obsolescence G/L formula definition is added.

Cross Reference

- DSM428 Stock Obsolescence Formula Definition