
LCI015 Transaction by Item

Overview This Loan/Consignment transaction inquiry displays the consignment warehouses, customer and customer reference, delivered quantity, delivery date, process number and line number of a specified Item.

Purpose This panel allows you to:
Check loan/consignment transactions for specified item.

Follow up

Inquiries

This is inquiry program.

1. Select option **Loan/C Transaction by Item Inquiry** from Base Modules>Distribution>Order Processing & Billing>Order Processing>Order Entry>Loan/ Consignments menu.

LCI015 Loan/Consignment Transaction Inquiry panel is displayed.

The screenshot shows the IBS BookMaster v1.5.3 application window. The title bar indicates the dispatcher name as BOOKMASTERDEV74 and the active user as AUKEEPAD. The main window is titled "Loan/C Transaction by Item Inquiry". The left sidebar contains a menu tree with the following structure:

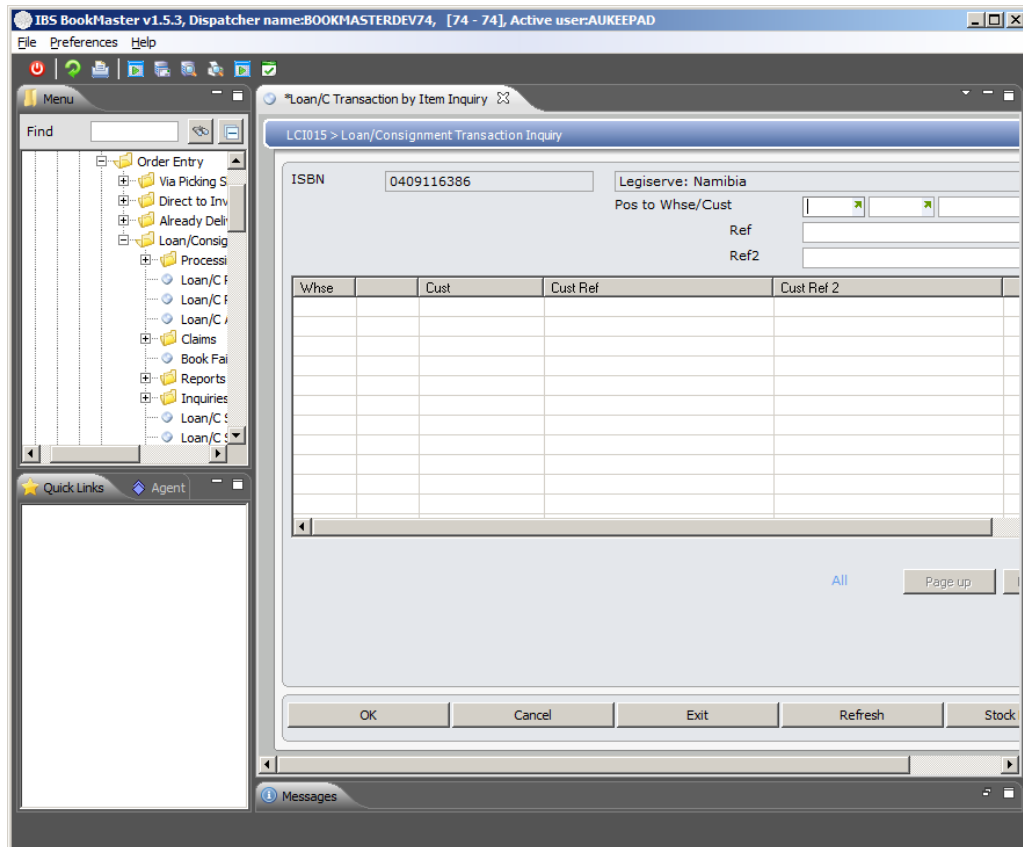
- Order Entry
 - Via Picking S
 - Direct to Inv
 - Already Del
 - Loan/Consignments
 - Process
 - Loan/C F
 - Loan/C F
 - Loan/C F
 - Claims
 - Book Fai
 - Reports
 - Inquiries
 - Loan/C
 - Loan/C

The main panel displays the "LCI015 > Loan/Consignment Transaction Inquiry" form. It includes the following fields:

- ISBN
- <Optional>
 - Warehouse
 - Customer
 - Customer ref
 - Customer ref 2

At the bottom of the form are buttons for OK, Cancel, and Exit. The bottom status bar shows the copyright information: (C) Copyright 2005. - IBS International Business Systems Ltd.

2. Key in all the required fields and click **OK** or press **Enter** to display following panel.



Transaction details about selected item are displayed.

Relevant Fields

Warehouse

Name of the warehouse for which transaction details are to be displayed.

Customer

Name of the customer for which there is loan/consignment order.

Cust Ref

Given reference for the order by which to search for item stock details.

Cust Ref 2

This is optional customer reference. It will be given, if provided.

Dlv Qty

Total quantity delivered against particular loan/consignment order.

Date

The date on which transfer took place into the loan/consignment warehouse.

Functions

Stock balances

Access loan/consignment stock inquiry to display available stock details of the item from loan/consignment order.

Options

Details

Access Loan/Consignment Transaction Inquiry Details to show transaction details for the particular selected item/warehouse combination.

Orig Trans

Access transaction inquiry to display transaction details for

Stock bal

the selected customer/warehouse combination.

Access Loan/Consignment Stock Inquiry Details to display balance stock for selected record.

Cross Reference

- LCI005 Loan/Consignment Stock Inquiry - by item