

---

# DSW152 Work with Screen Writer Definition

---

## Overview

The user can have different formats to display the information on the PSI maintenance screen by PSI types or by the various Title Levels or Title Classifications within the same PSI type.

---

## Explanation

The Detail variable lines are system defined in **TMSDS/PSI-LTYP**.

Initially the PSI screen definitions display and then the PSI type and Level classification are selected following which the option to add or change a variable definition is available. If add is selected the screen that displays is where the lines to be included on the PSI Maintenance screen are selected. For each line the following variables are available:

- The Line Type – Actual Inventory Ratio, Calculation Type Forecast/Budget, Forward Order Qty, Maximum stock ratio, Minimum stock ratio, Purchase Order by PSI type, Period, Reservation order, Sales Forecast by PSI Type, Cost from sales analysis, Suggested order by PSI type, Seasonal patterns, Qty from sales analysis, Value from sales analysis, YTD and LTD totals, Text line. These are in **TMSDS/PSI-LTYP**
- Page number – 1 to 99 pages are available.
- The line number – detail lines 1-14 are configurable.
- The line description – What the user sees on the screen.
- The month to offset from current month
- PSI type
- Forecast/Budgets
- Filter dynamically by range of Type of Sale
- Extended header variable to show user defined fields.
- Header screen is unlimited.
- Retrieve order demand from the Sales Analysis History Masterfile (SAHM00P).

These are attributes of the screen to define the look and feel of the screen.

- The display option – Row or Column Format, PSI Summary or Running forecast
- Screen ID can be specific to each User ID/group
- Select the start period
- Display 12 months of PSI data using the row format instead of 7 months on a column format.
- Configure PSI screen default setting like cursor position, start period, number of month to window etc.

- Windows period by year, month or number of months.
- Define the required P& A screen.
- Summaries PSI by Item by year, semester and more.
- Define and show footers information like running total, LTD etc.
- Sales analysis level - This gives the option to display by Currency, Sales or Non sales, System or components, Pack or Details -on the selection the user will then have the option to include/omit/select all/include a range/exclude a range certain parameters depending on the level selection like Company, Branch, Region, Buying group, Major accounts, Customer number, sales, no sales, Type of Sale, Sales Representative, Sales Division.

Once these variables have been selected and confirmed another screen displays for defining how the figures for the lines are to be generated. The fields that display to define the value depend on the entry in the Sales analysis level field.

---

## Header Variables

Header information (values/variables) on the PSI Maintenance screen is soft coded and user definable. **TMSDS/PSI-VAR** keeps template variables. This addresses the requirement to display minimum order quantity, minimum stock level and safety stock on the header screen. There are 5 header lines, where the heading details can be added and a maximum of 99 headings.

---

## Header Extension Definition

Life to Date Sales:

This is the life to date sales of the title which is computed as the total of the LTD file for the prior years in DSSH00P and the sales for the current year in SAHM00P. TMSDS/PSI-VAR determines if this column will be visible in the PSI maintenance. (Sales analysis level, sales and/or non-sales transactions, exclude/include returns, etc) to use in deriving the LTD sales figures.

Recommended Retail Price:

This is the RRP from the selling price file. TMSDS/PSI-VAR determines if this column will be visible in the PSI maintenance. What the price code, currency, and TOS will be used in deriving the RRP.

Select a variable that is being displayed. These are defined in TMSDS/PSI-VAR to be used as an extended definition in the Screen Writer.

---

## Detail Variables

Click **Work with**:

Detail lines on the PSI Maintenance can display in different modes. The display mode of the data will be indicated on the screen. This field determines how the information is displayed, for line types BUD, F/B, PO, SAL, SH and SO, as follows:

1. **MTD** – this will be as per the existing method of displaying the information by period,
2. **YTD** – this will display the cumulative total for the financial year by period. The starting period will be based on the first month of the financial year as set-up in TMSDS/SOY.

3. **LTD** – this will display the life to date total.
4. **MAT** – this will display moving annual total. Total quantity or amount for the last 12 months.
5. **MYE** – this will display 6 months year estimate. This will be the same as the existing line type MYE.

Note: When adding or maintaining a variable definition the line type selected affects whether additional entry fields display on this screen, for example, Months to Offset and Sales analysis level fields. It also affects whether additional screen requiring information to be entered displays. Each additional screen and field will be covered in later sections.

---

## Examples

This section illustrates examples concerning:

[Example 1: Addition of a New Screen Writer Definition](#)

[Example 2: Work with Screen Writer Definition Details](#)

[Example 3: Add Running Forecast details for selected screen writer definition](#)

[Example 4: Addition of Screen Writer Definition Header Variables](#)

[Example 5: Add Screen Writer Definition Header Details](#)

[Example 6: Work with Screen Writer Definition Header Details](#)

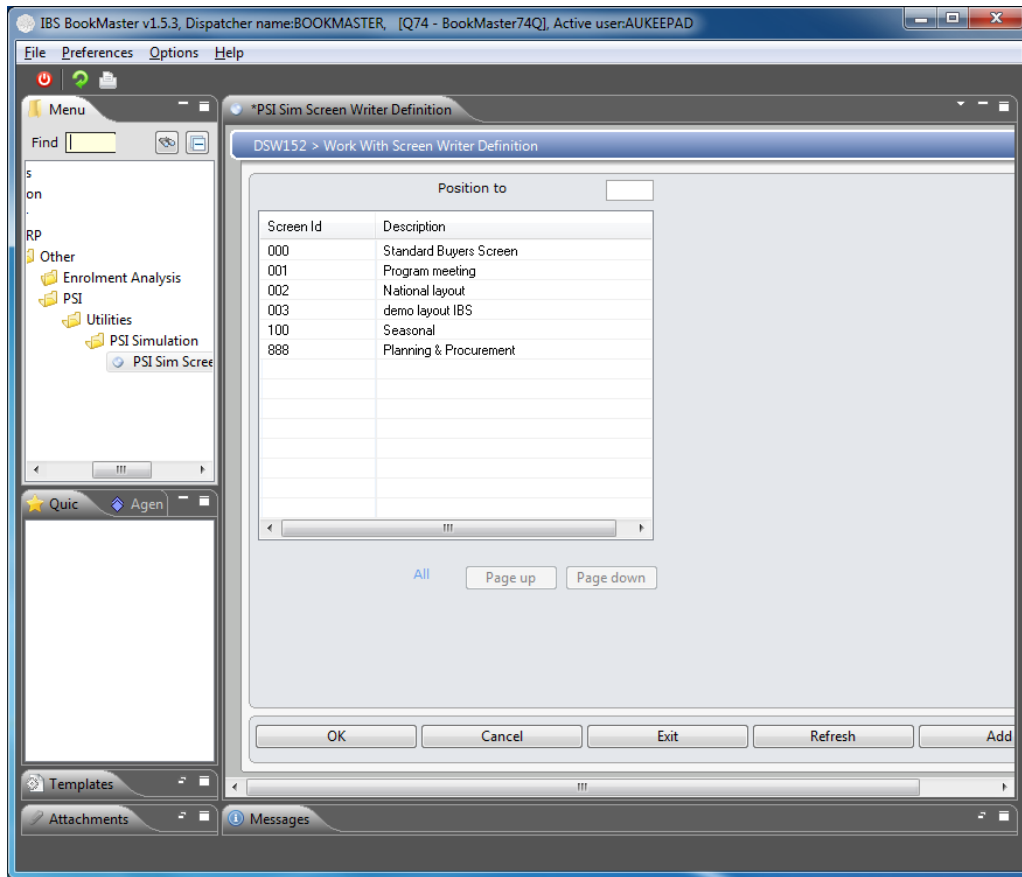
---

### Example 1: Addition of a New Screen Writer Definition

This example describes how to add a new screen definition. In this example an entirely new definition is being created.

1. Select option **PSI Sim Screen Writer Definition** from Base Modules> Distribution> Other> DRP> Other> PSI> Utilities> PSI Simulation menu.

**DSW152 Work with Screen Writer Definition** main panel is displayed.



## Options

**Delete**

Access Work with screen writer definition in delete mode to delete selected screen writer definition.

**Display**

Access Work with screen writer definition in inquiry mode to inquire on selected screen writer definition.

**Work with**

Access Work with screen writer definition to add screen writer definition details.

**Change**

Access Work with screen writer definition in change mode to change selected screen writer definition.

**Copy**

Access Work with screen writer definition in copy mode to copy selected screen writer definition.

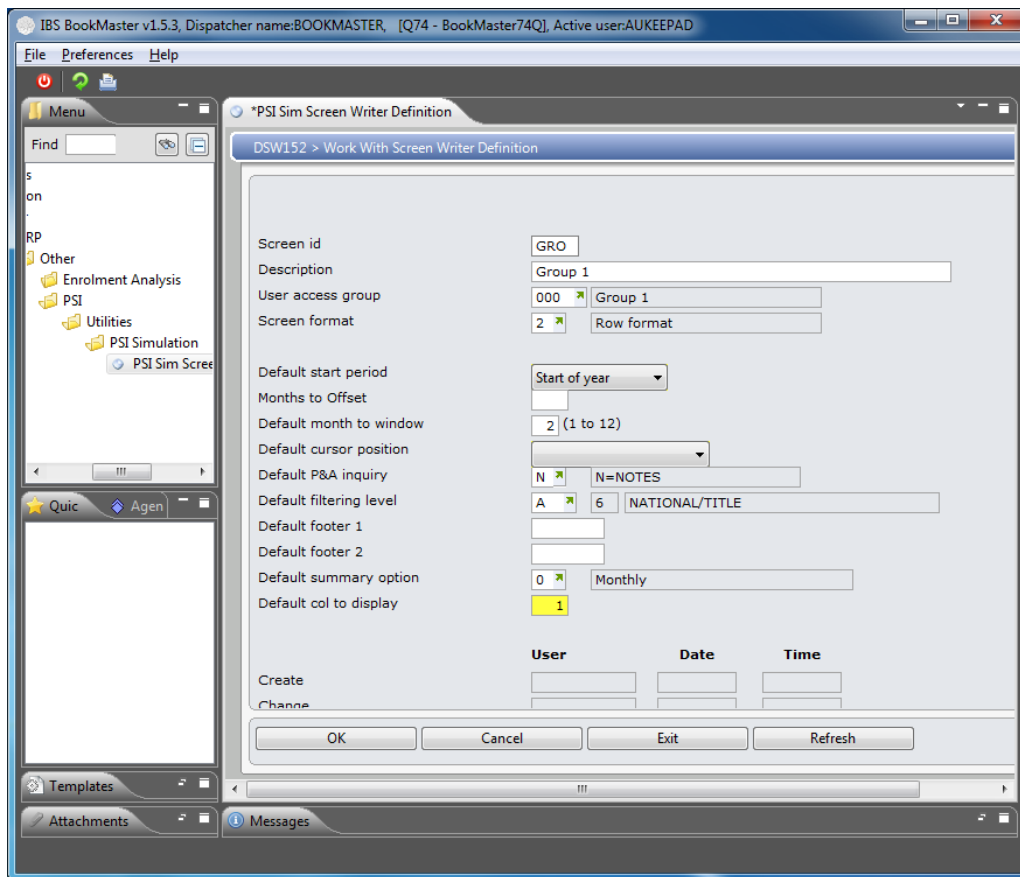
## Functions

**Add**

Access Work with screen writer definition in add mode for the addition of a new screen writer definition.

2. Click **Add**.

**DSW152 Work with Screen Writer Definition** panel is displayed in add mode.



## Relevant fields

### Screen ID

A Screen Identification number is used to identify each specific PSI screen format. The maximum number of screens is 999.

### Description

Enter a Description to match the screen identification number.

### User access group

Select a valid Group.

### Screen format

Is the data to be displayed in a Row or Column format? The row format can display 12 periods on a single screen.

### Default start period

What is the preferred starting period when using this definition? Tick either Start of Year or Current month.

### Months to Offset

This is the number of prior months to display on the screen relative to the default start period.

### Default month to window

This is the number of months that the display will move forward or backward on the screen.

### Default cursor position

This is the initial position of the cursor when the PSI screen is first displayed. The cursor can be positioned to appear on the first input field or the page number.

### Default P&A inquiry

Select the sequence number for a Price and Availability screen. This is the Price and Availability option to be displayed on the inquiry tab for Stock.

### Default filtering level

**Customer level**

Select the Customer level.

### **Default filtering level**

In PSI Screen Writer Definition the key level that is to be used to access sales data from SAHM00P. This will define the levels when the PSI data can be filtered using the Filter Function.

<a href="#">Default footer 1</a>	Text displayed on the footer line 1 for the Column format. Example: This text can be used as a total of Quarterly figures on a selected column. This Footer is not used on Row formats.
<a href="#">Default footer 2</a>	Text displayed on the footer line 2 for the Column format. Example: This text can be used as a total of Year to date figures on a selected column. This Footer is not used on Row formats.
<a href="#">Default summary option</a>	This is the default value when the Summary function is selected.
<a href="#">Default col to display 2-7</a>	This is the number of summary details that will be displayed. For Row format the maximum is 7 lines For Column format the maximum is 12 lines.

3. Key in required fields and click **OK**.

New screen definition is added.

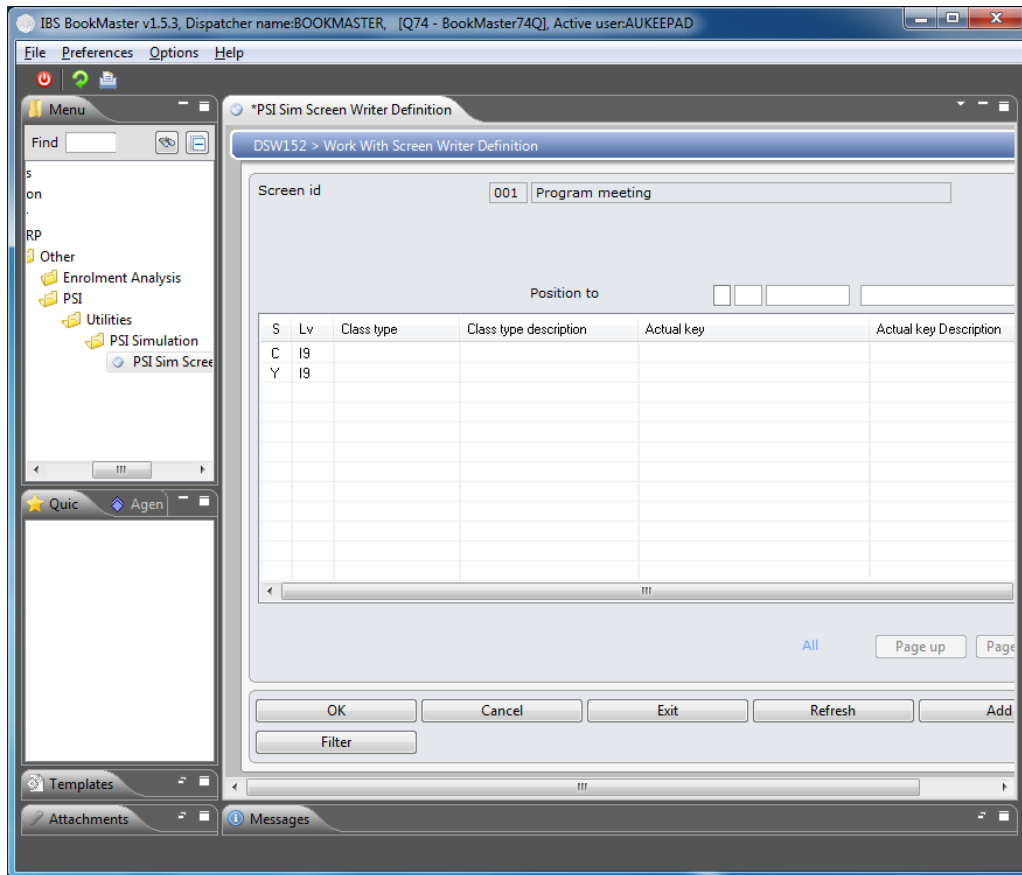
---

## [Example 2: Work with Screen Writer Definition Details](#)

This example describes how to work with screen writer definition details.

1. Repeat steps **1** to **3** as in [Example 1: Addition of a New Screen Writer Definition](#)
2. Select a definition and click **Work with**.

**DSW152 Work with Screen Writer Definition** panel is displayed.



## Options

[Display](#)

Access Work with screen writer definition in inquiry mode to inquire on selected screen writer definition details.

[Running Forecasts](#)

Access Work with screen writer definition in add mode to add running forecast details for selected screen writer definition.

[Header](#)

Access Work with screen writer definition to maintain header details of a screen writer definition.

[Work with](#)

Access Work with screen writer definition to add header variables.

[Copy](#)

Access Work with screen writer definition in copy mode to copy selected screen writer definition details.

[Delete](#)

Access Work with screen writer definition in delete mode to delete selected screen writer definition details.

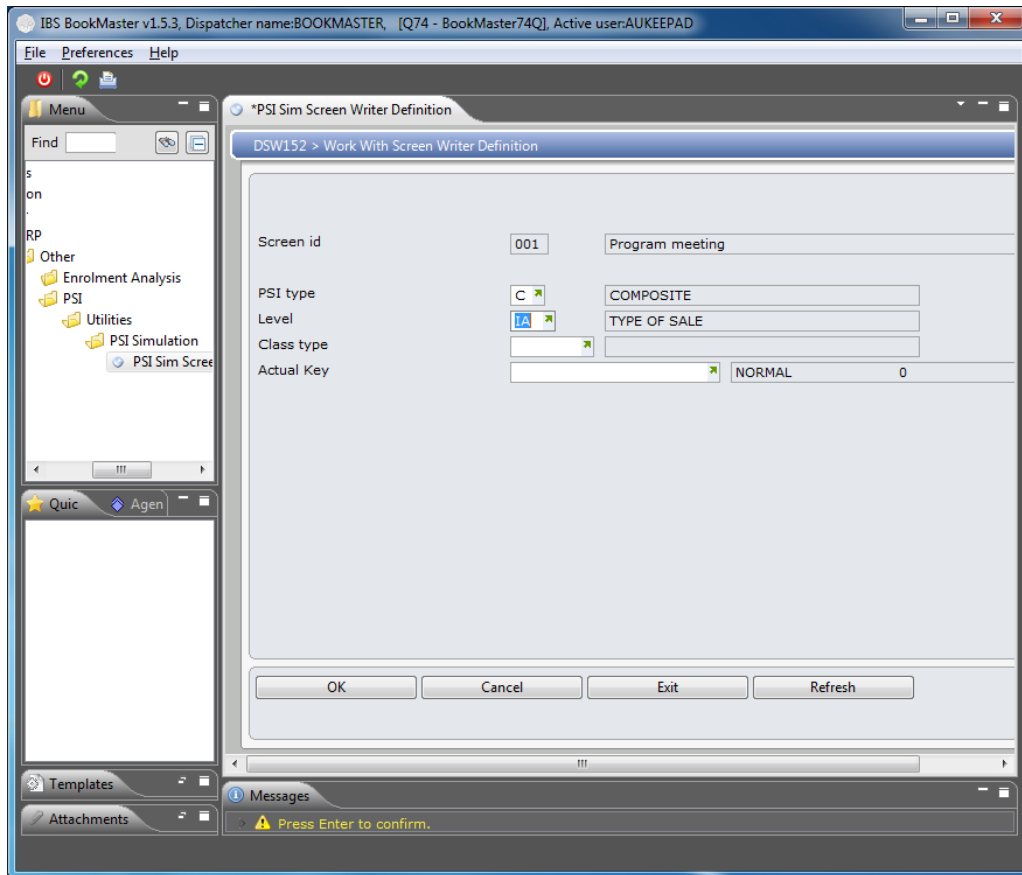
## Functions

[Add](#)

Access Work with screen writer definition in add mode for the addition of selected screen writer definition details.

3. Click **Add**.

**DSW152 Work with Screen Writer Definition** panel is displayed in add mode.



## Relevant Fields

### PSI type

#### PSI type

PSI Types are user defined codes that allow you to group titles by your major Businesses by Groups. Examples: Export, Retail, Inter-company, Projects or Major Inventory Groups. Example: Domestic, Export.

#### Bond/free/composite

In the Plan Order Report, enter the Type that corresponds with the Forecast ID selection in the previous field.

### Level

Title Level groups define product details into different levels for analysis purposes. It is a hierarchical structure. The Levels are system-defined; however, each level can hold an unlimited number of user-defined codes to identify the various groupings within the level. You are therefore able to analyse information by, for instance: Individual Title. Title Classification Information, relating to all titles that carry a specific classification type, is grouped and presented, such as a Markup Class/Sales and Forecast Group. Total Information, relating to all Titles is grouped and presented.

### Class type

Titles can be categorised into several Classification types. The entry in the next three fields depends on what was entered Classification field. This gives the user multiple options to view products that are flagged under certain conditions.

Example: Low Stock report, Program Meeting, and by a

specific Stock Controller.

In PSM Definition Maintenance the entry in this field depends on what was entered previously in the Title Key Level field.

Suggested orders can be generated by Title Classification.

### Actual key

The entry in this field depends on the previous entries in Title Key Level and/or Class Type. If for example the entry in Class Type was IC-CG Inventory Category, when search for a list of valid codes, details of TMSDS/IC-CG will display.

4. Key in required fields and click **OK**.

Details are added.

---

### Example 3: Add Running Forecast details for selected screen writer definition

This example describes how to add running forecast details for selected screen writer definition.

1. Repeat steps 1 and 2 as in [Example 2: Work with Screen Writer Definition Details](#)
2. Select record and click **Running Forecasts**.

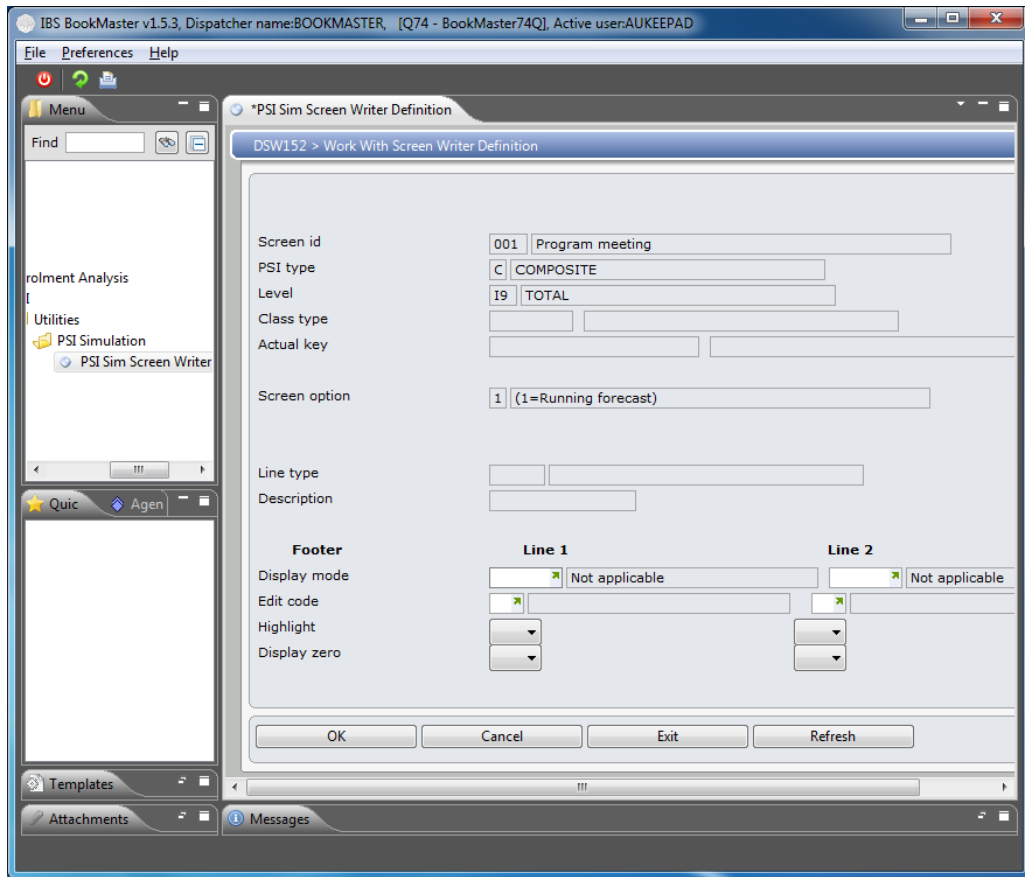
**DSW152 Work with Screen Writer Definition** panel is displayed in add mode.

The screenshot shows the 'PSI Sim Screen Writer Definition' panel in add mode. The panel contains the following fields and values:

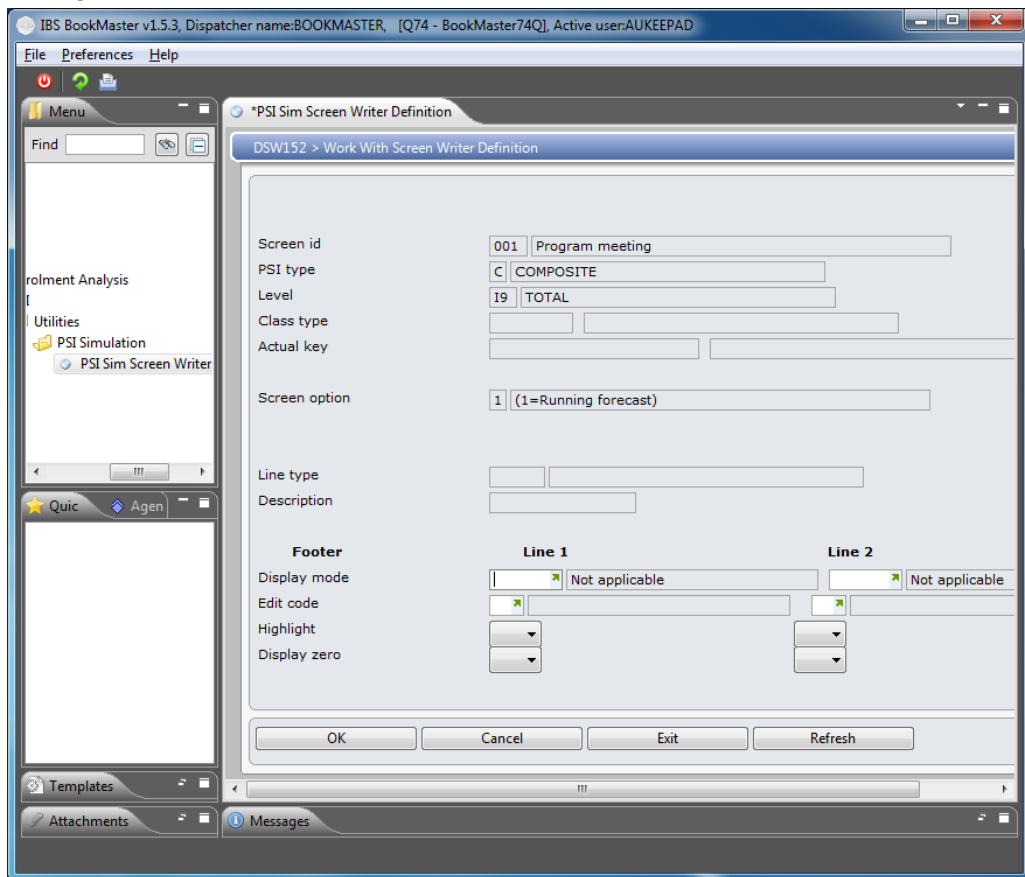
Screen id	001	Program meeting
PSI type	C	COMPOSITE
Level	I9	TOTAL
Class type		
Actual key		
Screen option	1	(1=Running forecast)
Line type		
Description		
Edit code		
Highlight	No	
Display zero	Yes	

Buttons: OK, Cancel, Exit, Refresh

3. Page down.



4. Page down.



5. Key in required fields and click **OK**.

**DSW152 Work with Screen Writer Definition** panel is displayed in add mode.

6. Key in required fields and click **OK**.

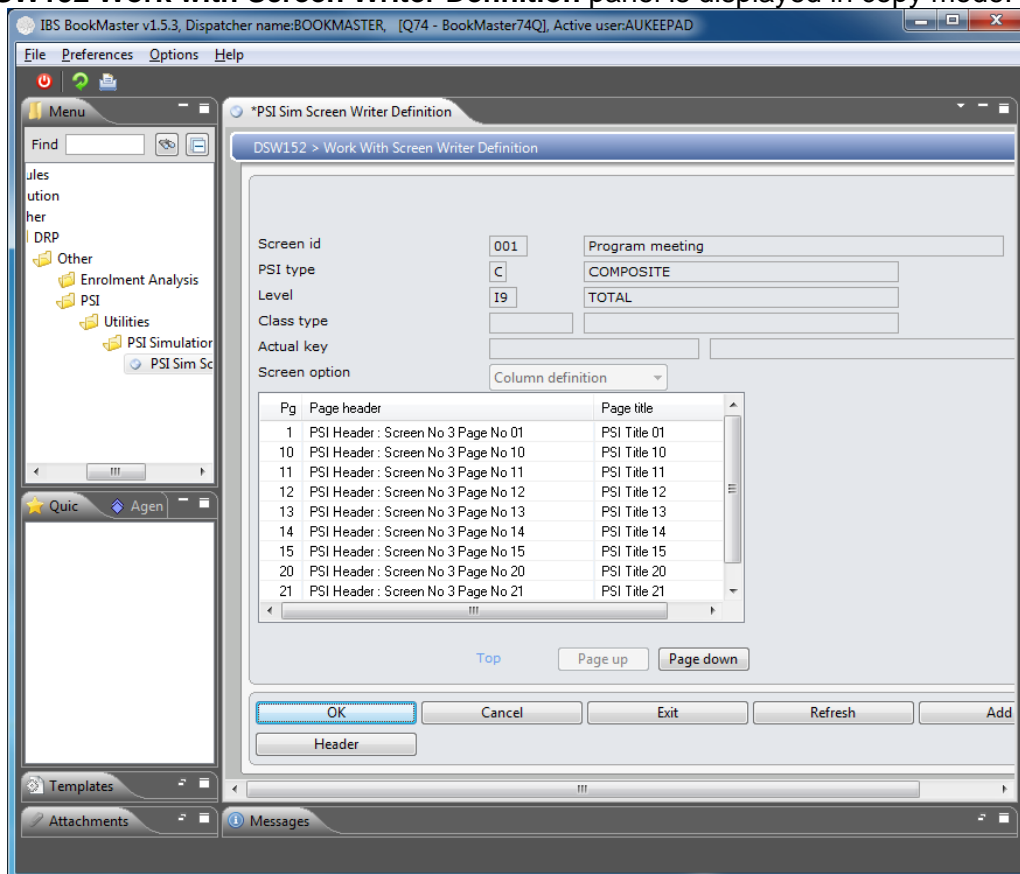
Running Forecast is added.

## Example 4: Addition of Screen Writer Definition Header Variables

This example describes how to add header variables to the screen writer definition selected.

1. Repeat steps 1 to 3 as in [Example 2: Work with Screen Writer Definition Details](#)
2. Select a screen ID from the record and click **Work with**.
3. Select an item from the record and click **Work with**.

**DSW152 Work with Screen Writer Definition** panel is displayed in copy mode.



### Options

**Display**

Access Work with screen writer definition in inquiry mode to inquire on selected screen writer definition details.

**Header**

Access Work with screen writer definition to maintain header details of a screen writer definition.

**Work with**

Access Work with screen writer definition to add header variables.

Copy

Access Work with screen writer definition in copy mode to copy selected screen writer definition details.

Delete

Access Work with screen writer definition in delete mode to delete selected screen writer definition details.

## Functions

Add

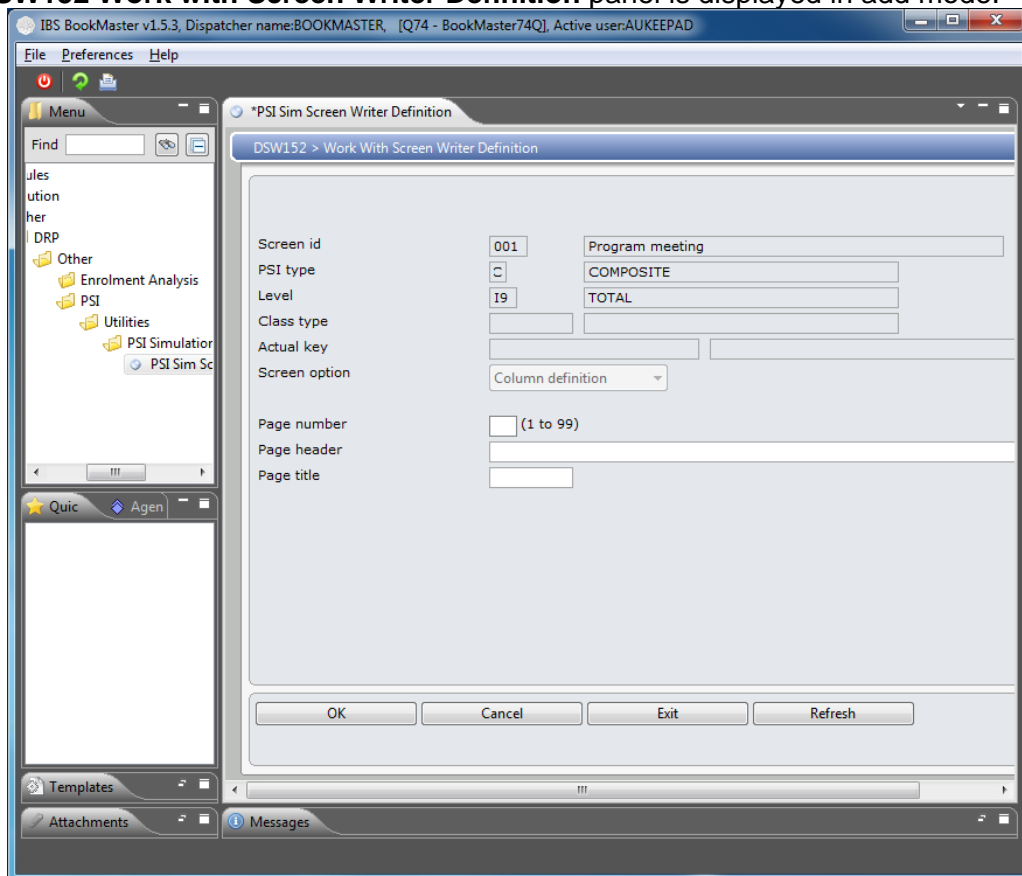
Access Work with screen writer definition in add mode to add header variables of selected definition.

Header

Access Work with screen writer definition in add mode to add line text for header variables of selected definition.

4. Click **Add** to screen heading.

**DSW152 Work with Screen Writer Definition** panel is displayed in add mode.



## Relevant Fields

Page number

The page number is mandatory (1-99). Enter the page number where the required information should be displayed.

Page header

Enter the heading that will be displayed in the PSI maintenance screen. Relevant page as a Header.

Page title

### Line description

This description appears on the PSI maintenance screen. The maximum 15 characters and if using less than the fifteen decimals and spaces should be used to fill up to the fifteen: Example Budget 2, LY Sales

## Page Title

Enter a Page title to describe the heading.

5. Key in required fields and click **OK**.

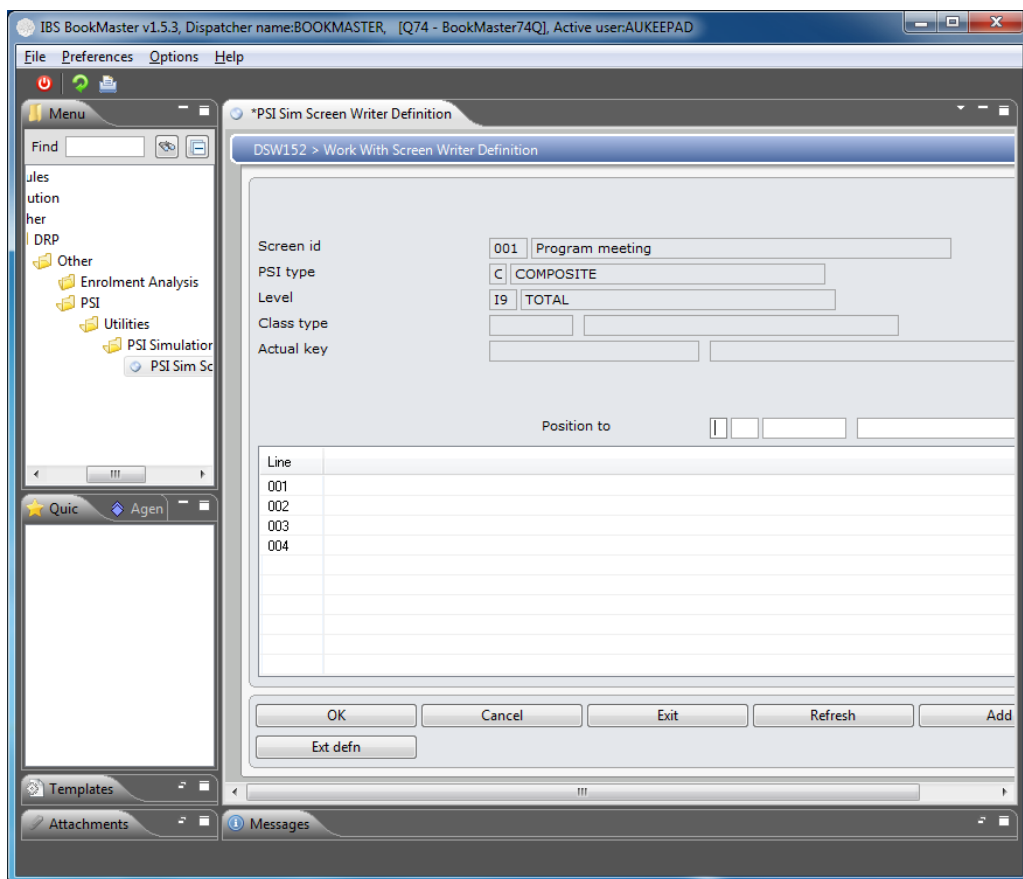
---

## Example 5: Add Screen Writer Definition Header Details

This example describes how to add a screen writer definition header details.

1. Repeat steps 1 and 2 as in [Example 4: Addition of Screen Writer Definition Header Variables](#)
2. Select record and click **Header**.

**DSW152 Work with Screen Writer Definition** panel is displayed in change mode.



### Options

[Display](#)

Access Work with screen writer definition in inquiry mode to inquire on selected line text details.

[Change](#)

Access Work with screen writer definition in change mode to change selected line text details.

### Functions

[Add](#)

Access Work with screen writer definition in add mode to add selected line text details.

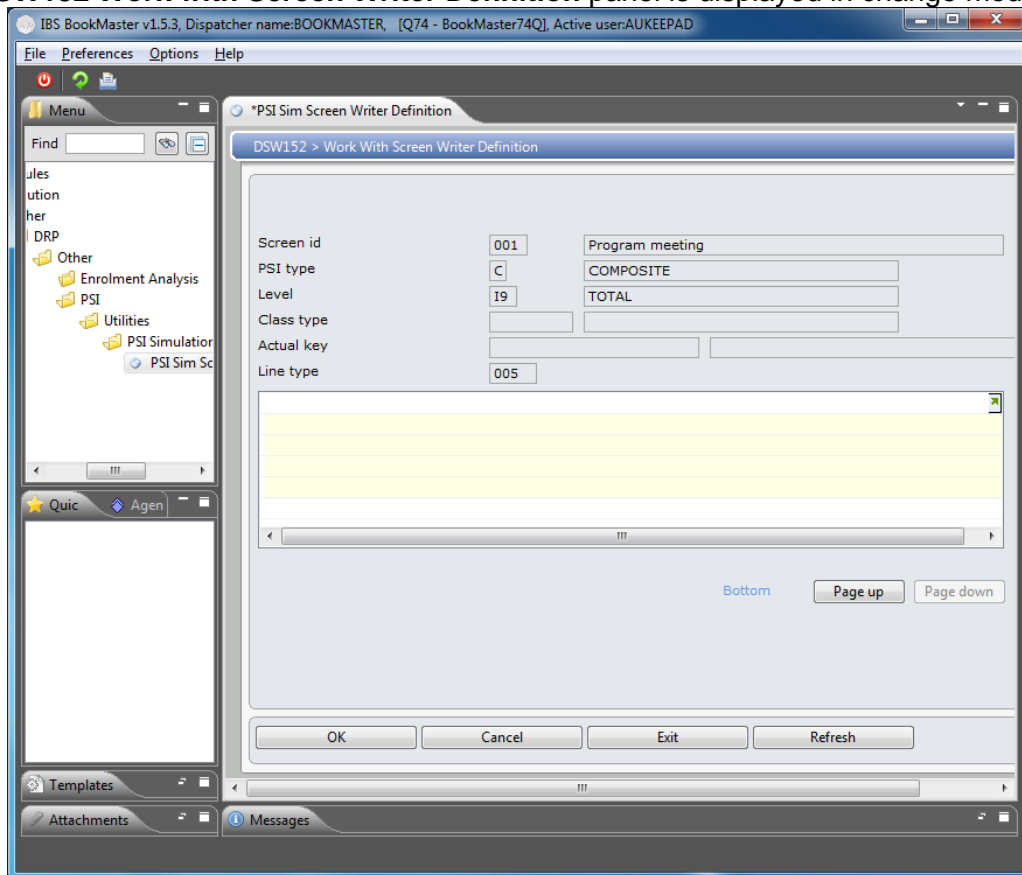
[Ext Defn](#)

Access Work with screen writer definition to select an

extended definition.

3. Click **Add**.

**DSW152 Work with Screen Writer Definition** panel is displayed in change mode.



4. Key in required fields and click **OK**. Continue to add as many headings as required.

### Relevant Fields

Header Line  
Text

TXT78

The following are the various fields that can be displayed in the header areas of the PSI Screen Writer.

AAQ

### Available Inventory

This displays the Current Stock on Hand. This is made up of Stock on Hand + In Transit Quantities for all warehouses linked to the PSI type in TMSDS/PSI-WH.

Note: **This** figure can be check against inquiry DSI020 Title Stock Inquiry,

Fields = Stock on Hand + In Transit.

**The** Stock Function key can be used to access this Inquiry.

Consider also **TMSDS/WH-SOHA** Reduce stock available because of: B/O, F/O, RSV.

ABC

ABC Class

This ABC Class defaults from the Title Masterfile in the Distribution Module. Maximum length to display is 1 character.

ADJ

MTD adjust

In PSI Maintenance the Month to Date Adjustment quantity displays for all warehouses linked to the PSI Type in **TMSDS/PSI-WH**.

Note: This figure can be checked against the Title Stock Inquiry field – *Adjust*. The Stock function can be used to access this inquiry.

AI

Alternate **Item**

The Alternate Item defaults from the Item Masterfile in the Distribution Module.

ASQ

Available Saleable

Displays the Available quantity from the selected warehouses defined in **TMSDS/PSI-WH**.

Note: This figure can **be** checked against inquiry DSI020 Title Stock Inquiry, fields = Stock on Hand – In processing – In picking – For systems – Unmade systems – Discrepancy – Next Month.

The Stock Function Key can be used to access this Inquiry.

**Consider also TMSDS/WH-SOHA** Reduce stock available because of: B/O, F/O, RSV.

BODS

PSI Type Description

This displays the Business Description for the selected PSI Type.

## BOND

PSI type

PSI type

PSI Types are user defined codes that allow you to group titles by your major Businesses by Groups. Examples: Export, Retail, Inter-company, Projects or Major Inventory Groups. Example: Domestic, Export.

Bond/free/composite

In the Plan Order Report, enter the Type that corresponds with the Forecast ID selection in the previous field.

## BOQ

Backorder qty

This displays the Backorder quantity in the Warehouse File (DSWH00P).

Note: This figure can be checked against the Title Stock Inquiry, field = On Backorder. The Stock Function Key can be used to access this Inquiry.

## CESD

**Cease Date**

This Cease date defaults from the Title Masterfile in the Distribution Module. The maximum length to display is 10 characters. The format that displays depends on **\*\*\*\*\*/DATFMT** whether it's in D/M/Y, M/D/Y or Y/M/D.

## CMNT

Title Comment

The comment defaults from the Title Masterfile in the Distribution Module.

The maximum length to display is 40 characters.

Subject

In PSI Maintenance – Requested Meeting, enter the subject of the meeting being requested.

## CRTQ

Carton Quantity

The Carton Quantity defaults from **the** Title Masterfile in the Distribution Module.

The maximum length to display is 5 characters

#### EOQQ

##### Economic **Order Quantity**

The EOQ defaults from the Warehouse Stock Levels Definition File (DSM070)

#### I

##### Item

The ISBN defaults from the Title Masterfile in *the* Distribution Module.

#### IAQ

##### Inventory

In PSI Maintenance the Current Stock on Hand displays. This is made up of Stock on Hand + In Transit Quantities for all warehouses linked to the PSI Type in **TMSDS/PSI-WH**.

Note: This figure can be checked against inquiry DSI020 Title Stock Inquiry, fields = Stock on Hand + In Transit.

**The Stock** Function Key can be used to access this Inquiry.

#### IBOR

##### Stock Status

The Stock status code defaults from the Title Masterfile in the Distribution Module.

#### IDSC

##### Item Description

The Title defaults from the Title Masterfile in the Distribution Module.

#### IEDC

##### Extended Description

The Author defaults from the Title Masterfile in the Distribution Module.

## ISQ

### Saleable

Displays the Available quantity from the selected warehouses defined in **TMSDS/PSI-WH**.

**Note:** This figure can be checked against inquiry DSI020 Title Stock Inquiry, fields = Stock on Hand – In processing – In picking – For systems – Unmade systems – Discrepancy – Next Month.

**The Stock** Function Key can be used to access this Inquiry.

Consider also TMSDS/WH-SOHA Reduce stock available because of: B/O, F/O, RSV.

## ISTS

### Item **Status**

The Status code defaults from the Title Masterfile in the Distribution Module.

## IPF

### Local **Product**

The Local Product flag defaults from the Title Masterfile in the Distribution Module.

## LTD

### Life to **Date quantity**

The Life to day quantity defaults from the Sales History files.

The Calculation is as follows:

Last Year LTD (SAHL00P) + Year to Date YTD (SAHM00P)

Note: If the File SAHL00P is empty then no figures are displayed.

To view use the sales inquiry - Title Sales Inquiry (DSI092).

## MAXQ

### Maximum stock level

The Maximum stock level defaults from the Warehouse Stock Levels Definition Files Warehouse National Costing File (DSWHN00P) and Warehouse File (DSWH00P) Based on **TMSDS/WH-CSTB** which determines whether

the costing is at national level or Warehouse Level.

#### MINQ

##### Minimum stock **level**

The Minimum stock level defaults from the Warehouse Stock Levels Definition Files Warehouse National Costing File (DSWHN00P) and Warehouse File (DSWH00P) Based on **TMSDS/WH-CSTB** which determines whether the costing is at national level or Warehouse Level.

#### NXTI

##### Next Item

This is determined by the Item Masterfile. Example: If the previous item for 'Item C' is 'Item B' and previous item of 'Item B' is 'Item A', Then, the next item for 'Item B' is 'Item C'.

#### OITQ

##### In Transit

This **displays** the In Transit quantity from the selected warehouses defined in **TMSDS/PSI-WH**.

Note: This figure can be checked against inquiry DSI020 Title Stock Inquiry, fields = In Transit (OITQ)

#### OOBQ

##### On Board

**The On Board** quantity defaults from the Warehouse Stock File (DSWH00P).

Note: This figure can be checked against inquiry DSI020 Title Stock Inquiry, fields – On Board (OOBQ).

#### ORGN

##### Country **of Origin**

The Country of Origin defaults from the Title Masterfile in the Distribution Module.

The maximum length to display is 4 characters.

#### ORSV

##### Reserved Stock

The Reserved stock defaults from the Warehouse Stock File (DSWH00P).

Note: This figure can be check against inquiry DSI020 Title Stock Inquiry, field – On Reserve Order (ORSV).

## OTH

### MTD others

In PSI Maintenance the Month to Date other quantities display for all warehouses linked to the PSI Type in **TMSDS/PSI-WH**.

**Note:** This figure can be checked against inquiry DSI020 Title Stock Inquiry, fields – Outstanding In transit quantity (OITQ) – Reserved unmade systems (I2RPAK) – Reserved for packs (I2RUSQ)

## PAQ

### MTD receipts

In PSI Maintenance the Month To Date Receipt quantities display from the Purchasing Module and any orders generated from PSI for all warehouses linked to the PSI Type in **TMSDS/PSI-WH**.

Note: This figure can be checked against inquiry DSI020 Title Stock Inquiry, Field = MTD Receipt + Reserved for unmade systems quantity. The Stock Function Key can be used to access this Inquiry.

## PEQ

### Pending qty

This displays the Pending quantity. This is made up of Current Orders 'In processing' with a status of P = Pending from the Warehouse stock file. (DSWH00P).

Note: This figure can be checked against inquiry DSI020 Title Stock Inquiry, field = In Processing.

The Stock Function Key can be used to access this Inquiry.

## PR1I

### Previous 1 Item

The Previous 1 Item defaults from the Title Masterfile in the Distribution Module.

## PR2I

### Previous 2 Item

The Previous 2 Item defaults from the Title Masterfile in

the Distribution Module.

### PR3I

Previous 3 Item

The Previous 3 Item defaults from the Title Masterfile in the Distribution Module.

### RHELD

Held by Warehouse

The Held by Warehouse defaults from the Warehouse Transaction File. These are the transactions in transit within the Warehouse process.

Note: This figure can be checked against inquiry DSI020 Title Stock Inquiry, field = Held by Warehouse.

**The** Stock Function Key can be used to access this Inquiry.

### RLSD

Start date

This date defaults from the Title Masterfile in the Distribution Module.

The Start date is the Release date or Publication date.

The maximum length to display is 10 characters. The format that displays depends on \*\*\*\*\*/DATFMT whether it is in D/M/Y, M/D/Y or Y/M/D.

### RPAK

For **System**

The For System defaults from the Warehouse Transaction File. These are the transactions placed on hold for Systems.

Note: This figure can be checked against inquiry DSI020 Title Stock Inquiry, field = For System and unmade systems

**The** Stock Function Key can be used to access this Inquiry.

### RPCK

In Picking

This displays the In Picking quantity from the selected warehouses defined in **TMSDS/PSI-WH**.

Note: This figure can be checked against inquiry DSI020 Title Stock Inquiry, field = In picking

The Stock Function Key can be used to access this Inquiry.

#### RPRC

In Processing

This displays the In Processing quantity from the selected warehouses defined in **TMSDS/PSI-WH**.

Note: This figure can be checked against inquiry DSI020 Title Stock Inquiry, fields = In Processing + Pending.

The Stock Function Key can be used to access this Inquiry.

#### RPTWY

Reserved Putaway

The Reserved Putaway defaults from the Warehouse Transaction File. These are the transactions in transit within the Warehouse process.

**Note: This** figure can be checked against Title Stock Inquiry, fields = Reserved Putaway.

The Stock Function Key can be used to access this Inquiry.

#### RRP

Recommended Retail **Price**

The RRP defaults from the price that was determined in the PSI screen writer header section for extended definition.

#### SAQ

MTD sales

In PSI Maintenance the Month to Date Sales quantity minus Credits displays for all warehouses linked to the PSI Type in **TMSDS/PSI-WH**.

Note: This figure can be checked against inquiry DSI020 Title Stock Inquiry, fields = *Sales – Credits*. The Stock Function Key can be used to access this Inquiry.

#### SSQ

## Safety Stock **Quantity**

The Safety Stock quantity defaults from the Warehouse Stock Levels Definition File (DSM070).

A warning message displays when stock falls below the safety stock level. The closing inventory by period is checked and a message displays if the stock on any of the periods displayed on the screen is negative or less than the safety stock. The 'Purchase to' warehouse from the PSI header is used to obtain the warehouse where the safety stock is defined. The warehouse file has been changed to include the new field to capture the safety stock. The warehouse stock level definition program has been modified to include the safety stock field.

SUBI

## **Substitute Item**

**The Substitute** ISBN defaults from the Title Masterfile in the Distribution Module.

TFR

MTD Tfr I/O

In PSI Maintenance the Month to Date Transfer In and Out quantities display for all warehouses linked to the PSI Type in **TMSDS/PSI-WH** which indicates that the Warehouse is Saleable =Yes and Warehouse = Yes.

Note: This figure can be checked against Title Stock Inquiry fields = *transfer out* – *transfer in*. The Stock function can be used to access this inquiry.

TOTORDQ

## Total **O/S Purchase Order Quantity**

The Total Outstanding Purchase Order quantity display for all warehouses linked to **the** PSI Type in **TMSDS/PSI-WH**.

The Total outstanding Purchase Order Qty for Bond = PSI type

What is O/S P/O Qty?

If the field ICF = Yes => QINV (invoiced quantity)

If the field RCF = Yes => QRCV (received quantity)

**If** the field QORD (outstanding order quantity) > QRCV => QORD – ORCV

What about Systems/pack?

Bill of material explosion

MRP computation is from the Unmade System/Pack items

file (DSUSP00P).

UOM

**Unit of Measure**

The UOM defaults from the Title Masterfile in the Distribution Module.

The maximum length to display is 3 characters.

**Item Classification**

**The Item** classifications are user defined and therefore are unlimited.

1. Remember to add the IC-XXX to **TMSDS/IC-TYPES** to become active.
2. Add the IC-XXX to TMSDS/PSI-VAR
3. Add to the Screen Writer Header in Format A, B, C, or D

Example: @EDT: \IC-EDTR (Editor)

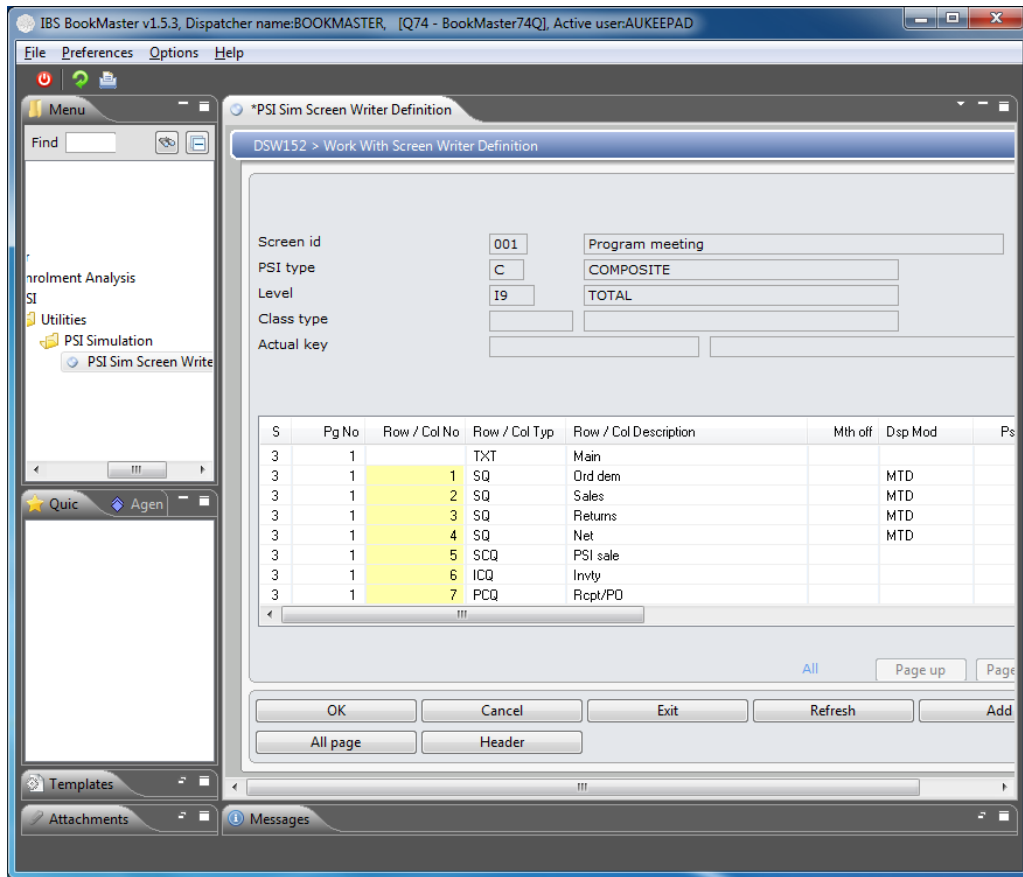
---

## Example 6: Work with Screen Writer Definition Header Details

This example describes how to work with a screen writer definition header details. **Note:** When adding or maintaining a variable definition the line type selected affects whether additional entry fields display on this screen, for example, Months to Offset and Sales analysis level fields. It also affects whether additional screen requiring information to be entered displays. Each additional screen and field will be covered in later sections.

1. Repeat steps **1** and **2** as in [Example 4: Addition of Screen Writer Definition Header Variables](#)
2. Select record and click **Work with**.

**DSW152 Work with Screen Writer Definition** panel is displayed.



## Options

**Work with**

Access Work with screen writer definition in change mode to change detail variables of selected definition.

**Copy**

Access Work with screen writer definition in copy mode to copy detail variables of selected definition.

**Delete**

Access Work with screen writer definition in delete mode to delete detail variables of selected definition.

**Display**

Access Work with screen writer definition in inquiry mode to inquire on detail variables of selected definition.

## Functions

**Add**

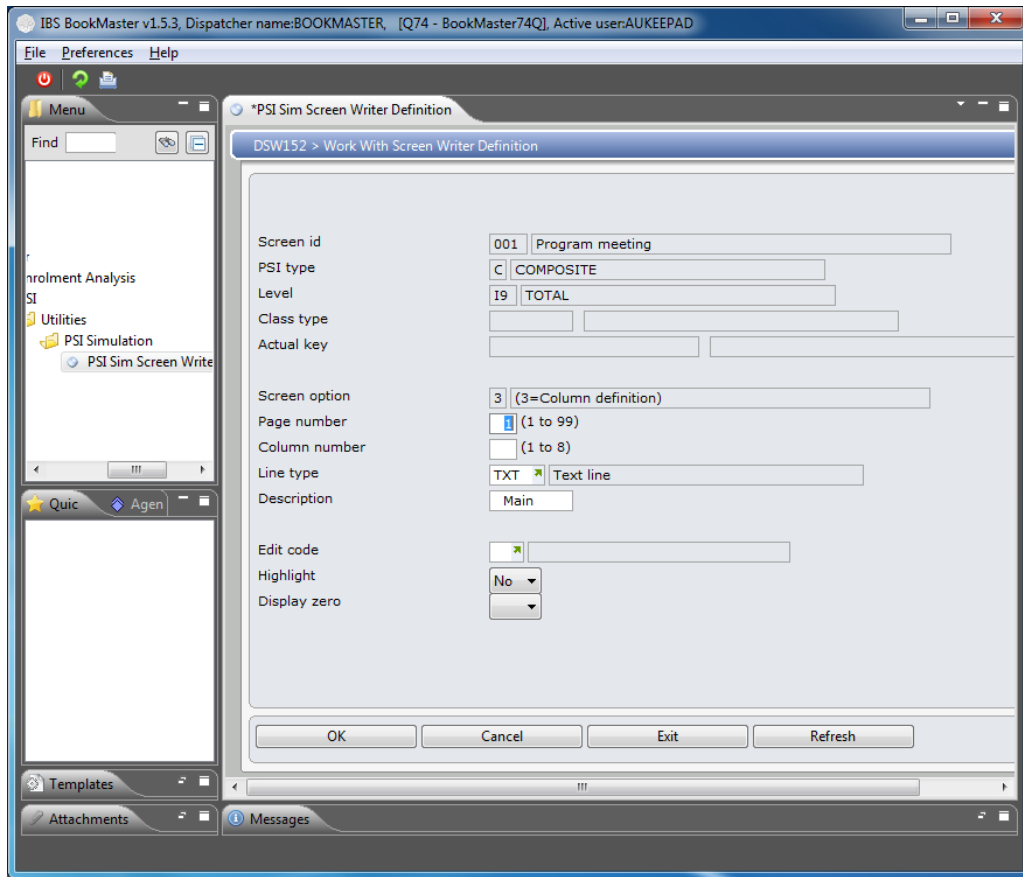
Access Work with screen writer definition in add mode to add detail variables of selected definition.

**Header**

Access Work with screen writer definition in add mode to add line text details.

3. Click **Add** to add detail variables.

**DSW152 Work with Screen Writer Definition** panel is displayed.



## Relevant Fields

**Page number**

The page number is mandatory (1-99). Enter the page number where the required information should be displayed.

**Line number**

This is the detail line number starting with 1 and going to 14 and is a mandatory entry.

**Line type**

In PSI screen these are the available line types that can be used in the review process.

In Screen Writer define the line type and source of data to be displayed in the DSE152 PSI screen. The Line types are established in **TMSDS/PSI-LTYP**.

Detail lines after the inventory line are all user definable as follows:

**AIR** – Displays the Actual Inventory Ratio. This calculation is based on the Target Inventory Ratio Parameters set up in the Stock Ratio Maintenance screen.

Formula used to calculate suggested orders based on the inventory ratio:

Average sales method

Suggested orders for period N =

(Target I/R for period N \* Average sales for period N)

+ Sales for period N – Stock for period N-1 less outstanding purchase order quantity for the period.

Example:

Calculation method. . . 1 Average sale

Offset code . . . . . 1 (0=Current month, 1=Forward, 2=Backward)

Months to offset . . . 1

No. Months to average 3

CM M1 M2 M3

100 110 120 130

$(110+120+130)/3=120$

However, if actual sales are greater than sales from PSI database (forecast demand), the actual sales replace the sales from PSI for the first month.

Reducing method

This is the number of months to reduce the stock to zero.

Suggested orders for period N =

$(\text{Sum of sales from period N to Target I/R})$

Stock for period N-1

All actual purchases for period N

However, if actual sales are greater than sales from PSI database (forecast demand), the actual sales replace the sales from PSI for the first month.

CMP: Calculation **type If a CMP line type** is selected the following additional screen displays after the <ENTER> key is pressed. CMP indicates that the line type is a calculated field. The entry required in this field is an arithmetic equation. The arithmetic operator '(' and ')' are used to group calculations. The program will perform arithmetic operator inside the brackets first.

Example of the equation is as follows:

$(\text{Sales Value} - \text{Sales Cost}) * 100 / \text{Sales value} = \text{Gross Profit Percentage.}$

F/B: Forecast/Budget – These figures are derived from the Forecast/Budget Files (DSFF00P). The Forecast/Budget field is mandatory as well as the Forecast/Budget ID and PSI type.

FO: Displays the Forward Orders that have been generated to the Outstanding Order File (DSOSA00P and DSOSB00P)

Note: This figure can be checked against the Title Stock Inquiry, field = On Forward Order.

Function Key Stock can be used to access the ISBN Stock Inquiry

FSQ - Forecast qty by PSI

This Forecast quantity is from the Forecast Files DSFF00P. This line type will allow display of any of the available forecast

data.

ICQ - Inventory qty ('I' in PSI)

Inventory

This displays the ending inventory for each period. This changes if any purchase orders have been created or are about to be created through the PSI and the Purchasing modules and also if suggested order or projected sales are changed.

Close stock

In PSI Stock Movement, the Closing stock for the month in PSI Summary by Category displays.

Computed as + purchases – Sales + or – adjustments + transfer in – transfer out +/- other.

However if Monthly sales are greater than Sales quantity for the current period, the calculation is:

Opening Stock + Suggested Order + Purchases + Sales.

Note: For the current month the Closing stock quantity can be checked against Title Stock Inquiry, field = MTD Close. Only if the actual sales are greater than PSI sales.

MAX - Maximum stock ratio The minimum stock ratio is the re-order point, and the maximum is the order up to inventory level. An order is recommended when the sum of the available and on-order inventory is at or below the minimum.

These values are defined in the Stock Ratio Maintenance File.

MHR - Months to Reduce

This is the number of months to reduce or define in the stock ratio file for calculation method of reducing method.

MIN – Minimum stock ratio The maximum is the order up to inventory level. An order is recommended when the sum of the available and on-order inventory is at or below the minimum.

**These values are defined in the** Stock Ratio Maintenance File.

PCQ - P/O qty ('P'in PSI)

**These** are all the outstanding Purchase Order quantities for the relevant PSI type.

PO P/O by PSI type: Shows outstanding Purchase Orders for the selected PSI type.

PRD Period: This is a heading line. This displays the Month and Year in **MMYYYY** format. If left blank this display the period from the current period

**RSV** Reservation order: Displays reservation orders from the outstanding order file.

SAL: **Sales By PSI Type** – This displays the sales from the PSI 'S' (Sales) figure in the PSI file (DSPMS00P) for the corresponding periods. If the field 'Month to off-set' is entered this can be used for previous month's sales.

SC - Cost from sales analysis The cost is retrieved from the Sales History file.

SCQ - PSI sales qty ('S'in PSI) The actual projected quantity displayed is the sales for the month.

Previous: The actual sales quantity is derived from the Sales History file (SAHM00P) based on the Customer/Title level defined on the Variables display screen.

Current: The quantity is obtained in the same manner as Previous, except PSI sales quantity for current period is used if it is greater than actual.

Future: The quantity is from PSI sales file (DSPMS00P)

SO - Suggested order by PSI type This is all the suggested purchase orders generated in the PSI file (DSPMP00P)

SOQ - Sugg ord qty(previously fixed)

In PSI Maintenance, entry in the Suggested Order field recalculates the Inventory field quantity. The system bases the calculation on the current month's stock level and the average sales over three months.

The Suggested Order function key can be pressed to display the suggested order screen and will allow users to generate suggested orders based on projected sales, inventory and targeted inventory ratio.

If the data has been entered within the suggested order screen the quantity will remain on the first screen.

However if you change your mind the quantity can be deleted by using the field exit key this will also remove it from the Suggested order screen. If there are two records existing then select the Suggested Order Function Key to remove both details.

**SP** – Seasonal Patterns Defaults from Title Masterfile field Profile Code. This must first exist on the Forecast Profile Definition file within Sales Decision Support.

Note: If the Title Masterfile field is left blank then the seasonal pattern will default to Even Spread.  $100/12 = 8.333333333333$ .

SQ - Qty from sales analysis The quantity is retrieved from the Sales History file.

**SV** - Value **from** sales analysis... The value is retrieved from the Sales History file.

TXT: Text line this text line is used to create Sub headings within the PSI screen. For the Field Display if zero answer 2=No.

Line description	<p>Line description</p> <p>This description appears on the PSI maintenance screen. The maximum 15 characters and if using less than the fifteen decimals and spaces should be used to fill up to the fifteen: Example Budget 2, LY Sales</p> <p><b>Page Title</b></p> <p><b>Enter a Page</b> title to describe the heading.</p>
Edit code	<p>TMSDS/PSI-EDTC holds the variables to be used when determining what should be displayed in the screen.</p> <p>1 ZERO BALANCES: Displays numeric field as whole numbers.</p> <p>2 ZERO BALANCES (2 DIGITS): Displays numeric field with two decimal places.</p> <p>3 PERIOD: Displays the period in MM/YYYY</p> <p>4 DATE: Displays the date in DD/MM/YY.</p> <p>5 DATE EDIT (4 digits) Displays numeric field with four decimal places.</p> <p>6 ZERO BALANCES (2 digits) Displays numeric field with two decimal places.</p>
Highlight	<p>Should this line be highlighted Yes or No?</p>
Display zero	<p><b>Display flag</b></p> <p><b>In PSM Definition</b> Maintenance, those factor fields that are of less importance can be flagged as Yes (tick in the box) resulting in factors to only be viewed by management when the Display Main &amp; Summary factors function key is selected on the PSM Price Simulation screen.</p> <p>With a display flag of No (no tick in the box), the factors are only displayed once the Display All function key is selected on the PSM Price Simulation screen.</p> <p>Display if zero</p> <p>In Screen Writer, should this line be displayed in the value contains a zero amount, Yes or No?</p>
Display mode	<p>Enter the movement types that can be used in display mode 'A' or 'B'.</p> <p>Display 'A'</p> <p>MAT = 12 MONTH MOVING ANNUAL</p> <p>MTD = MONTH TO DATE</p> <p>YTD = YEAR TO DATE</p> <p>Display 'B'.</p> <p>LTD = LIFE TO DATE</p> <p>MAT= 12 MONTH MOVING ANNUAL</p> <p>MTD = MONTH TO DATE</p>

MYE = 6 MONTHS YEAR ESTIMATE

YTD = YEAR TO DATE

Program will display either A or B mode when Search is selected depending on the type of data being setup.

Calculations: These can be used for values other than sales figures.

MAT 12 Month Moving Annual Total - This displays the last 12 months figures.

Example of 12 monthly sales

Current Period 8/00

Period: 7/99 8/99 9/99 10/99 11/99 12/99 1/00 2/00 3/00 4/00  
5/00 6/00 7/00

Sales : 0 11 6 2 4 5 0 0 2 0  
0 6 5

Therefore for the Period 7/00 the 12mth Sales is = 41

MYE 6 Months Year Estimate – Displays the last (Moving) 6 months Actual figures divided by the last 6 Seasonal Patterns.

Example of 6 monthly sales and Seasonal Pattern

Current Period : 8/00

Period : 2/00 3/00 4/00 5/00 6/00 7/00

Sales : 0 2 0 0 6 5

Sea/Pat: 12 10 11 6 8 11

Total Sales:  $2+6+5 = 13$

Total Sea/Pat:  $12+10+11+6+8+11 = 58/100 = 0.58$

6 Month sales divided by 6 months Seasonal Pattern =  $13/0.58$

Therefore for the Period 7/00 the 6mth Sales is = 22.

### Month to off-set

Entry of the months to offset is mandatory if the offset code is not zero. Key the months you want to offset. This is the number of months you want to go backward or forward to start the calculation.

Example if you want to start calculating average sales from October you would key in 3, and if you are in July. This enables you to start calculating average sales for the future from October for Number of Months to Average being 2.

The system will calculate average sales from October for the next 2 months.

Note: This is also how you would calculate average sales for previous months. The offset code in this case needs to be flagged as 2 = Backward.

### PSI Type

This field is displayed when one of the following types are

entered in the Line Type Field.

F/B = Forecast/Budget by PSI type

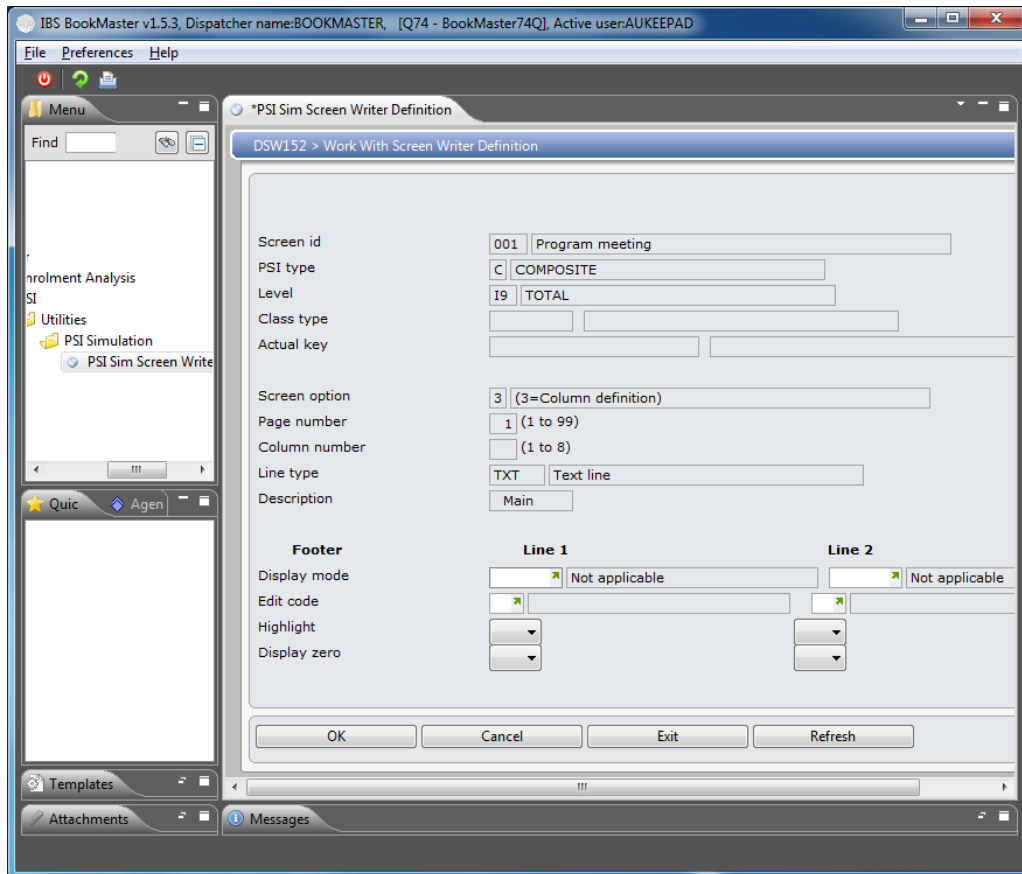
PO = P/O by PSI type

SAL = Sales forecast by PSI type

SO =Suggested order by PSI type

Select a valid PSI type to match.

4. Page down.



**Relevant Fields**

**Forecast/ Budget** This field is mandatory if the Forecast/Budget has been selected.

**Forecast/ Budget ID** This field is mandatory if the Forecast/Budget has been selected.

**Record type** **A** Type of Sale is an optional entry and is used to indicate the type of sale applicable to the PSM definition.

**Sales analysis level** This is the key level to be used to access sales data from SAHM00P. This code must be valid in SASL00P and the selected title level must have the ISBN bit in SASL00P to be on. This field is mandatory if type = SH (Actual sales from the Sales History file). If the Sales History field has been selection, then another screen will be displayed.

5. Key in required fields and click **OK**.

**DSW152 Work with Screen Writer Definition** panel is displayed. The following options and relevant fields are displayed in this panel.

### Options

1=Select all	no values are needed
2=Select list	Indicate specific codes to be selected in this Field
3=Omit list	Indicate specific codes to be excluded from selection
4=Include range	More than one code can be selected
5=Exclude range	More than one code can be selected

### Relevant Fields

Sales or non-sales	Are Sales or non-sales to be used in this definition? Defaults to 1 = Sales. Other choices are 2= Non sales or 3 = Both.
System or components	System or components This determines whether you want the PSI variable to apply to Systems or Components. Export system The export system defaults to System and may be overridden to <b>Component</b> . Note: If the system is a make up of components then build the system from components so the entry should be <b>Component</b> .
Pack or Details	This field is used to determine whether you want the rule by Pack or details. Pack. The PSI variable will apply to Packs. Details. The PSI variable will apply to details.
Sales, return, net	This field is used to determine whether you want to rule by Sales, Returns or Net. Sales. The forecast generation rule will apply to all Sales. Returns. PSI variable will apply to returns Net. The PSI variable will apply to Sales less returns.

6. Key in required fields and click **OK**.

### Note

- To delete/display/change/work with/copy writer definition, writer definition details, header definition details, detail variable details and writer definition header details, select the formula and click on the corresponding option.
- To add running forecast details for selected screen writer definition, select the formula and click on the corresponding option.

To add screen writer definition header variables, select the formula and click on the corresponding option.

For CMP Line type, select the formula and click on the corresponding option.

---

## Cross References

- DES152C – PSI simulation - main program