
DSO582 Suggested Order Generation

Overview

This function allows the user to generate suggested orders from the expected sales figures that were entered in the PSI maintenance screen for up to a 12-month period based on the targeted inventory ratio and the current stock available.

Explanation

Following calculations are used:

- $SO = \text{closing stock} + \text{sales} - \text{Purchases} - \text{opening stock}$
- Where the closing stock is equal to the stock holding months as defined in the Target I/R.
- The calculation considers the Back Order, Forward order, In-transit and so on when generating suggested order.

These will allow the system to generate suggested orders not only based on forecasted sales but also on existing latent demand of Back Order, Forward Order, reservation order, etc.

Even if there are no forecasted sales, the system will still generate orders based on existing Backorders, Forward Orders, Reservation Orders, etc.

The targeted I/R can be defined by based on the average sales for a given range of periods, reducing stock or on min/max stock holding.

The program checks the publication/cease date and does not order titles that are before the publication date and after the cease date.

This gives the user the ability to go back into the PSI maintenance screen to change figures and regenerate the suggested orders as many times as is required.

The automatic updating of IC class linked to PSI minute type. IC class is updated with multiple values based on a range of suggested order quantities.

An example of the application of this enhancement is the ability to prioritize the review of suggested orders by assigning an L (low), M (medium), and H (high) on the Low stock indicator flag and selecting this value on the PSI review.

The user will be able to define the range of values at a more detailed level than L, M, or H if so desired by splitting the range of values into a smaller range to provide more granularities.

This facility is able to account for inventory of products attributed to systems in the PSI. The inventory for stock items within a system must be visible in the PSI module.

Normally the quantities of components linked to a system are not considered as stock. With this in mind, an IC class as defined in **TMSDS/ICCM** will determine if quantity of products that have been linked into a system will need to be reported as inventory when doing PSI of the component.

The PSI order indication Report is used for a final check. This report uses the Buying price file for the Landing charges, Exchange rates from PSI if existing else the Company exchange rates in Distribution Database and the Supplier.

Once the quantities are verified as correct the Purchase order generation option can be used to generate the final purchase orders for a selected month or months when the stock will need to be ordered or when the stock will have to be received, before the final purchase order print.

Setup Requirements:

- **TMSDS/PSI-BOND** his defines all your different PSI types, these are user defined. Example: Retail, Projects, Export, Inter-company.
- **TMSDS/PSI-BUY** is used to retrieve the default Buying price ID.
- **TMSDS/PSI-FO** Define Unscheduled Outstanding Order rule
- **TMSDS/PSI-IBOR** determines what stock status code to be used by PSI. A flag called 'Generate Suggested order' allows display of all PSI types but still can include/exclude stock statuses in the suggested order generation.
- **TMSDS/PSI-ICCM** This defines the Title Classification to be used if the quantity of products linked into a system need to be reported as inventory when doing PSI of the component.
- **TMSDS/PSI-MIN** PSI Minute type definition
- **TMSDS/PSI-MPAR** PSI minute parameters definition
- **TMSDS/PSI-MVAL** PSI Minute value definition
- **TMSDS/PSI-RDC** Receipt day code of month for ETA date
- **TMSDS/PSI-SO** Default values used for Suggested order generation. This control file includes a default value to consider the outstanding Pos in total for a selected period range while generating the suggested orders, but can still be overridden when running the suggested order generation i.e. 1=by period range and 2=by period.
- Option 2 (by period) is the original logic which takes into account the outstanding PO quantity only for the relevant receipt period.
- **TMSDS/PSI-STSL** Suggested order status list
- **TMSDS/PSI-WH** This defines which warehouses are linked to which PSI type in the PSI maintenance and indicates whether the warehouse is saleable or not.
- **TMSDS/SEQ-ISR** defines the sequence of which stock ratio definition will be used in the PSI maintenance.
- **TMSDS/WH-CSTB** Determines whether the costing is at national level or Warehouse level.
- **TMSDS/WH-SOHA** Consider stock availability because of Back Order, Forward Order, and Reservation Order.
- **TMSPU/BP-DFT** determines the relevant buying method to be used in PSI.
- **TMSPU/BP-MTH** Buying price retrieval methodology
- **TMSDS/PSI-PACK** (PSI IC type – Build pack from details) determines whether to plan as a PACK only without building as many packs as possible from details.

Packs and Bins can be treated as possible SKU/Item for the purposes of creating suggested orders and actual purchase orders for parent only and not the components.

If an item is a “P”ack and it is not found in the Purchase Order Details File (DSPOD00P), it will show the system/pack screen otherwise the normal screen will display.

Examples

This section illustrates examples concerning:

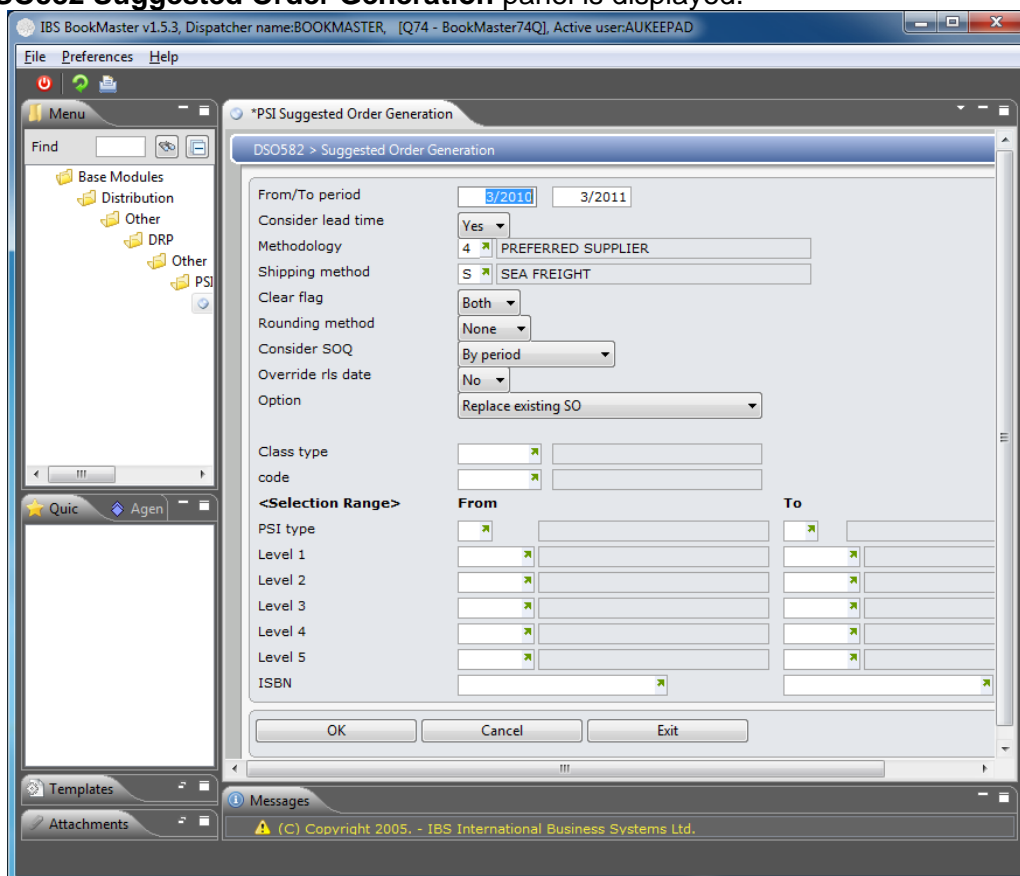
[Example 1: Suggested Order Generation](#)

Example 1: Suggested Order Generation

This example describes how to generate suggested orders.

1. Select option **PSI Suggested Order Generation** from Base Modules> Distribution> Other> DRP> Other> PSI menu.

DSO582 Suggested Order Generation panel is displayed.



Relevant Fields

From/To period

Period from

In Suggested Order Generation, the report 'From' Period range defaults to the Current Period and 11 months forward. Note the entered period cannot be less than the current period and not greater than a 12 month range.

Receipt period

	In PSI order indication report, entry in this field is optional. This is the ETA date in Purchasing Module. If left blank then all the purchase orders for the future months will be printed.
Methodology	<p>This determines the valid buying price methodology to be used, that has been defined in the Buying Price file (PUBP00P)</p> <p>1 = LOWEST PRICE</p> <p>2 = SHORTEST LEAD TIME</p> <p>3 = MINIMUM ORDER AMOUNT</p> <p>4= PREFERRED SUPPLIER</p>
Shipping method	The shipping method allows the user to only consider those suppliers with matching shipping method. If this field is left blank, the system will consider all suppliers in generating the suggested orders transactions.
Clear flag	<p>The clear flag:</p> <p>0: Ready to order all or request for order flags are not cleared when the suggested orders are generated.</p> <p>1: Ready to order flag is cleared.</p> <p>2: Request for costing flag is cleared.</p> <p>3: Ready to order and request for costing flags are cleared.</p> <p>Ready to order flag is cleared. This is from the field RO in Suggested Order Function that has been generated in DSE152 PSI Maintenance</p> <p>Request for costing flag is cleared. This is from the field RC in Suggested Order Function that has been generated in DSE152 PSI Maintenance.</p>
Rounding method	<p>The calculation for the rounding of the suggested order quantity is based on the following method:</p> <p>CARTON QTY TMSDS/SO-CRTQ</p> <p>EOQ TMSDS/WH-CSTB and use DSWH OR DSWHN</p> <p>UOM TMSDS/PP-QRC</p> <p>SUPPLIER PACK QTY TMSDS/PP-QRC.</p>
Consider SOQ	<p>In PSI Maintenance, entry in the Suggested Order field recalculates the Inventory field quantity. The system bases the calculation on the current month's stock level and the average sales over three months.</p> <p>The Suggested Order function key can be pressed to display the suggested order screen and will allow users to generate suggested orders based on projected sales, inventory and targeted inventory ratio.</p> <p>If the data has been entered within the suggested order screen the quantity will remain on the first screen.</p> <p>However if you change your mind the quantity can be deleted by using the field exit key this will also remove it from the</p>

Override pub
date

Suggested order screen. If there are two records existing then select the Suggested Order Function Key to remove both details.

This field is used to indicate if the requested suggested period is to be overridden with the publication date if the publication date is greater than the requested period.

Option

Choose either:

To add to existing Suggested Orders only if the quantity is greater than the current order quantity.

OR

1: Always replace, if ready to order and requested for costing flags are blank.

2: Always replace, if clear flag = 3 (ie BOTH)

3: Only replace existing SO for ready to order, if clear flag = 1 or 3

4: Only replace existing SO for requested for costing if clear flag = 2 or 3

Replace existing SO calculation:

Retrieve default buying method from TMSPU/BP-DFT, if cost is retrieved from the Buying Price file. So, if blank buying method in Control File. The System will retrieve the buying method from buying file.

This includes make-up qty when generating the suggested order quantity.

The Month to Date sales will apply to the pending qty.

Price calculation:

The Title Masterfile then so does the supplier item

The buying price file then so does supplier item.

Class type

Titles can be categorized into several Classification types. The entry in the next three fields depends on what was entered Classification field. This gives the user multiple options to view products that are flagged under certain conditions.

Example: Low Stock report, Program Meeting, and by a specific Stock Controller.

In PSM Definition Maintenance the entry in this field depends on what was entered previously in the Title Key Level field.

Suggested orders can be generated by Title Classification.

Class code

Entry of the Class Code is optional. Class Codes are established in various Control Files depending on the class type entered. For example if the Class Type entered is IC-CG, then the class code will validate against TMSDS/IC-CG.

In **Suggested** Orders, if a Classification type has been entered in the previous field, enter the Classification codes to

match when generating a suggested Order.

PSI type

Select the PSI type to be used in the suggested order generation or leave blank to accept all. These are user defined PSI types definitions that **define** major Businesses by Groups. Example: Export, Retail, Inter-company, Projects.

2. Key in required fields and click **OK**.

Suggested orders will be generated. This will update the PSI Purchases file. Use the Order Indication report to review or use the PSI maintenance panel.

Cross References

- DES152C – PSI simulation - main program