

---

# DSO195 Transfer Approved Prices

---

## Overview

The approved selling price is transferred by title hierarchy and can be applied from a single title to a range of titles. The status of the simulated price is updated from A (approved) to C (complete).

---

## Explanation

Once simulated selling prices have been approved they can be transferred to the main price file.

The approved selling price is transferred by title hierarchy, and can be applied from a single title to a range of titles. The status of the simulated price is updated from A (approved) to C (complete).

This process is subject to User Access Restrictions. Refer to **User Access/Restrictions** documentation for more information on this feature.

Transfer of PSM Approved Prices to price file must refer to **TMSDS/PR-PRCD** to determine which price file to update. If Extended Price flag is 'Y', transfer to DSPRC00P, otherwise transfer to DSPR00P.

---

## Examples

This section illustrates examples concerning:

[Example 1: Transfer Approved Prices](#)

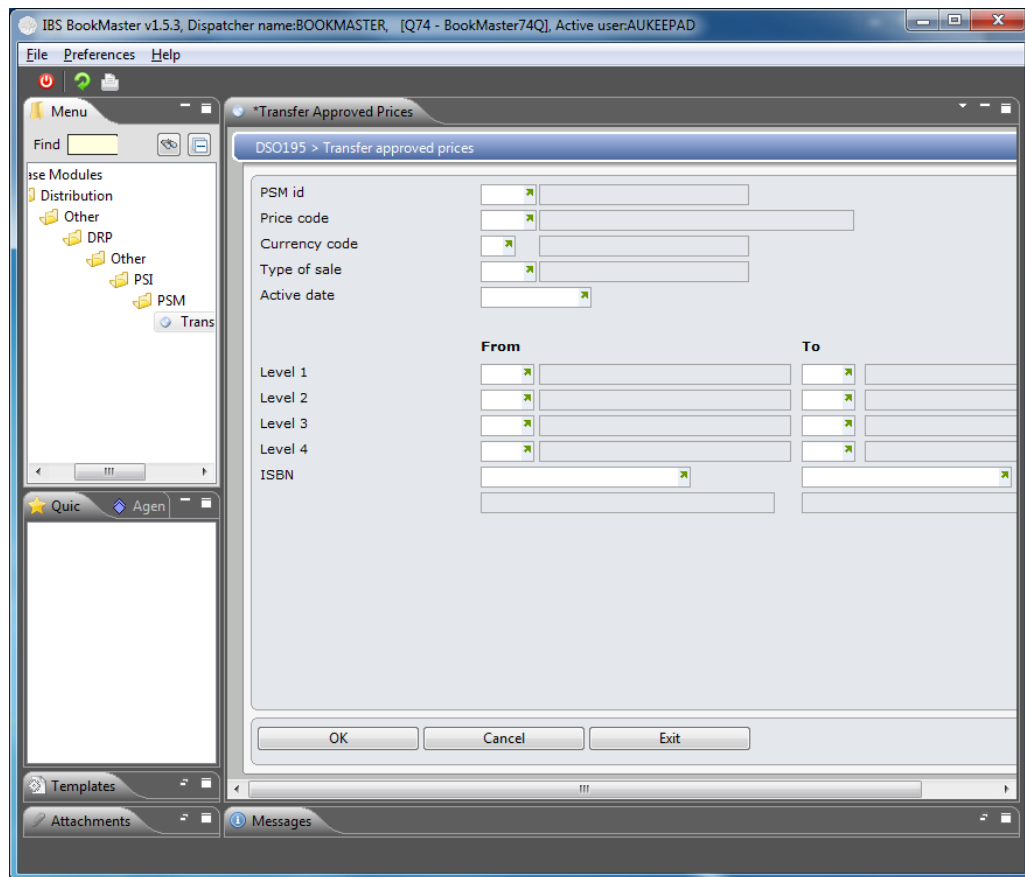
---

### Example 1: Transfer Approved Prices

This example describes how to transfer approved prices.

1. Select option **Transfer Approved Prices** from Base Modules> Distribution> Other> DRP> Other> PSI> PSM menu.

**DSO195 Transfer Approved Prices** panel is displayed.



## Relevant Fields

### PSM ID

A Pricing definition is identified to the system by a PSM ID. These codes are user defined and are stored on a system Control File. A title can have multiple price definitions.

### Price code

Select the price code applicable to the PSM definition being added.

### Currency code

Select a valid currency code for the PSM definition. In PSI Maintenance, the Currency defaults from the Supplier Currency defined on the PSI header and cannot be overridden.

### Type of sale

A Type of Sale is an optional entry and is used to indicate the type of sale applicable to the PSM definition.

### Active date

In Copy Price Simulation, the active date of the PSM ID to be copied.

In the case of transferring Approved Prices and printing a PSM Approved report, the Active Date is the date prices become effective.

Also used by PSM Detail Def Report to determine the date the prices become effective.

2. Key in required fields and click **OK**.

This result can be viewed in Price Inquiry by Item.