
DSI020 Item Stock Inquiry

| | |
|-----------------|--|
| <i>Overview</i> | The Stock by Item Inquiry is used to view warehouse details, stock level information and order information. Entry is required of the ISBN and the system then retrieves stock information details. |
| <i>Purpose</i> | This panel allows you to: View list of sales transactions for the specified item. |

Examples

This section illustrates examples concerning:

[Example 1: To Display Stock Details for an Item](#)

[Example 2: To Display Costing Details](#)

[Example 3: To View Stock Allocations](#)

[Example 4: To Display Warehouse Locations where Item is Stored](#)

[Example 5: To Display Stock Information of Pack or System Items](#)

[Example 6: To Display Manufacturing Stock](#)

[Example 7: To Display Obsolescence Information](#)

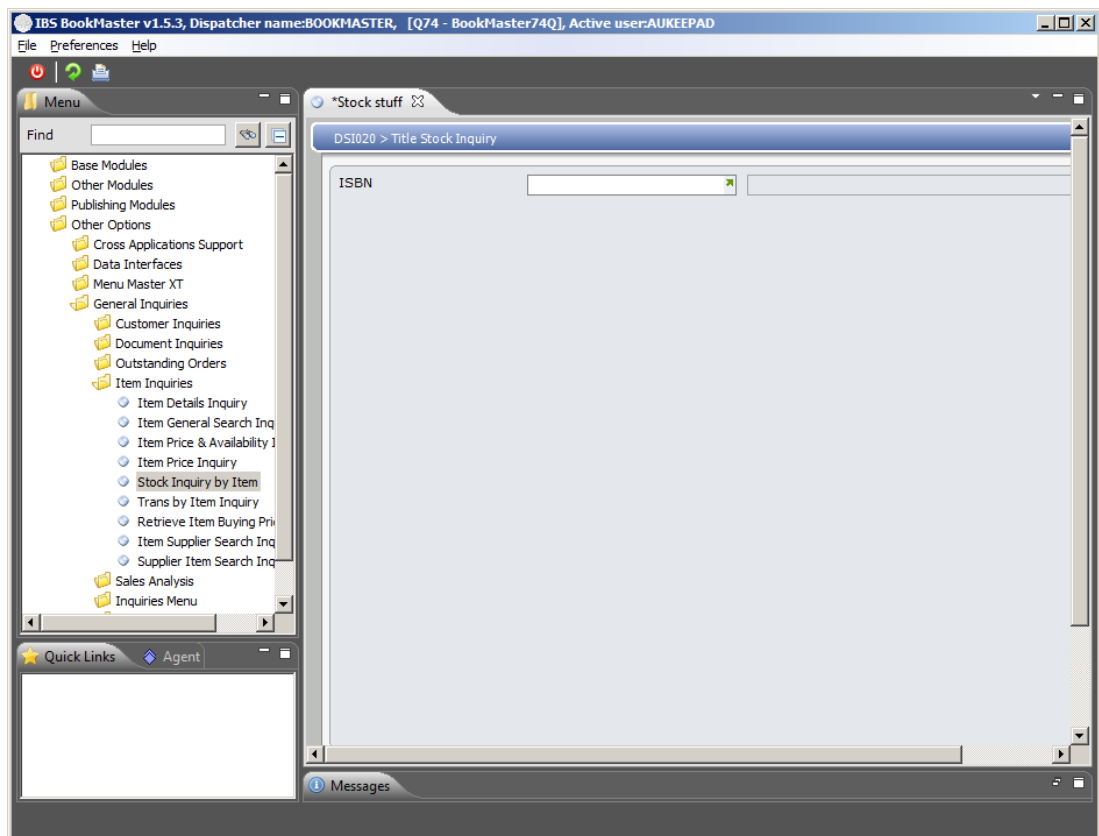
[Example 8: To Display Serial Details of an Item](#)

Example 1: To Display Stock Details for an Item

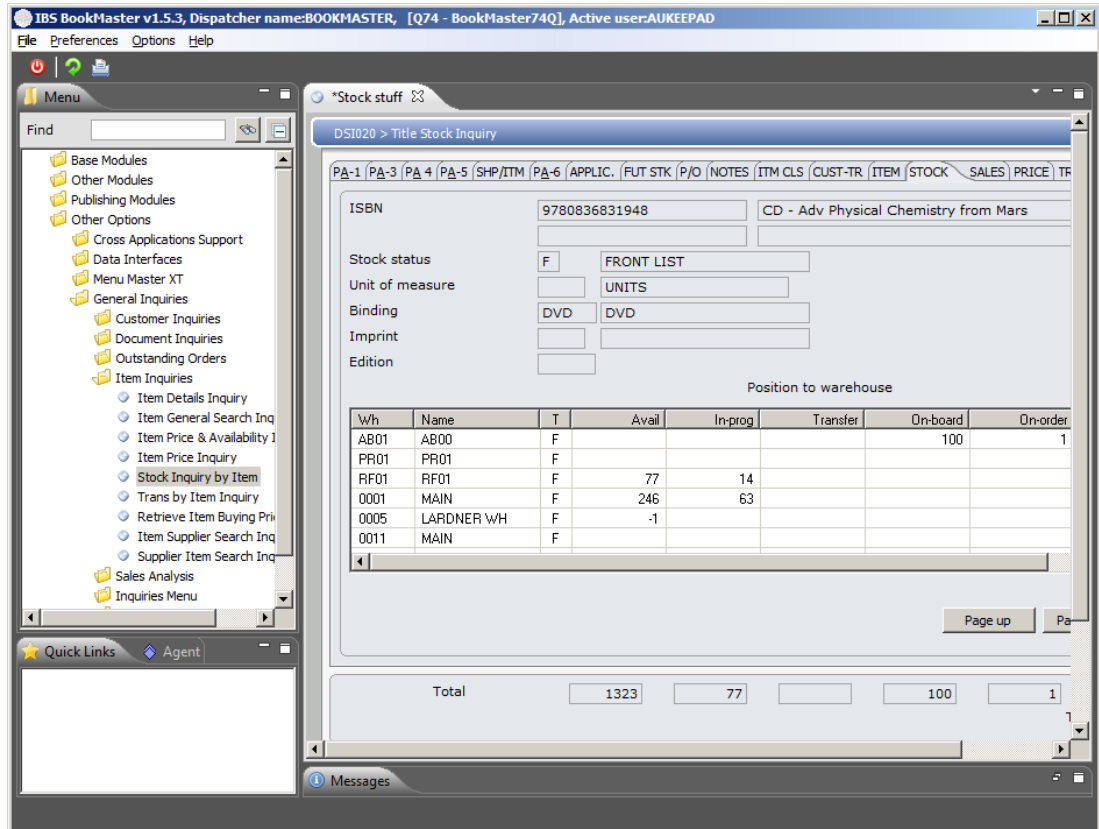
This example describes how to view stock details for specified item.

1. Select option **Stock Inquiry by Item** from Other Options>General Inquiries>Item Inquiries menu.

DSI020 Title Stock Inquiry panel is displayed.



2. Select item and click **OK** to confirm the selection. Following panel is displayed.



Functions

| | |
|---------------------------------|--|
| Fwd | This function displays next item's records. |
| Unit of measure | This function switches the unit of measure to display the item details per each item and per other valid units of measure, for example, units. |
| Physical Whs | This function switches the Name of the Logical warehouse and the actual Physical warehouse attached to each logical warehouse. |
| Substitute | This function displays stock details information of the items which are defined as substitute items for the current selected item. |
| Pack/System | Access DSI021 Pack/System Component Inquiry to display warehouses, locations and available stock details of the packs or system. |
| Bkwd | This function displays previous item's records. |
| MFG Stock | Access TMI200 Stock Inquiry to display manufacturing stock of the same item. |
| View | This function is used to access imaging function. |
| Obsolescence | This function is used to display stock by warehouse with obsolescence information retrieved from the Inventory Write Down module. |

Options

| | |
|--------------------------------|--|
| Details | Access DSI120 Item Stock Inquiry detail panel to display information such as the Stock Available, On-Order, Stock on Hand, value of Authorized returns, Original Unit Cost, Last Unit Cost, Average Unit Cost, Stock Value, Last Receipt Quantity and Date, Last Receipt Invoice and Date and the Month-to-Date, Year-to-Date and Life-to-Date stock levels. |
| Costing | Access DSI120 Item Stock Inquiry detail panel to display costing information such as the Bond Code, Age Date, Quantity and Trade Value of stock, Currency, Buying method, Base Value and the Last Receipt Quantity and Date. |
| Allocation | Access DSI265 Stock Allocation Inquiry to display current allocations of stock for an item such as the Company/branch to which the allocation is applicable, the quantity of stock allocated, Reserved quantities, On-board quantities and In-progress quantities. |
| Multi-location | Access DSI290 Item/Locations Inquiry to display locations within the warehouse in which the item is stored, corresponding location type, and status and stock on hand for the location. |
| View doc | This option is used to view documents such as invoices, orders and purchase orders. |
| Serial | Access WHI330 Item Serial Number Inquiry to display serial details of an item. This option is active only if item is serial controlled. |

Tabs

| | |
|---------|--|
| PRICE | Access DSI005 Item Price Inquiry to display selected item price details. |
| TRANS | Access DSI060 Sales Transactions by Item Inquiry to display sales transaction for a selected item. |
| P&A | Access DSI310 Price and Availability Inquiry to display pricing details as well as availability details for the selected item. This inquiry program can be displayed in 6 different formats. |
| O/S | Access DSI085 Outstanding Order Inquiry by Item to display all types of outstanding orders for selected item. |
| TEXT | Access DSI540 Item Text Inquiry to display text information related to selected item. |
| ITM CLS | Access DSI395 Item Classification Inquiry to display selected item classification details. |
| ITEM | Access DSI010 Item Masterfile Inquiry to display selected item masterfile details. |
| CUST-TR | Access DSI045 Transaction Inquiry by Customer/Item to display transaction details for the selected customer item combination. |
| STOCK | Access DSI020 Item Stock Inquiry to display selected item's stock availability details from all warehouses in the system. |
| SALES | Access DSI092 Item Sales Inquiry – Life To Date to display total sales details for selected item till date. |
| P&A-6 | Access DSI310 Price and Availability Inquiry to display pricing details as well as availability details for the selected item. This inquiry program can be displayed in 6 different formats. |
| APPLIC | Access DSI205 Item Applicability Inquiry to display item applicability details if any present. |
| FUT STK | Access DSI135 Stock Availability Inquiry to display stock status and stock details as per individual order for the selected customer/item combination. |
| P/O | Access DSI110 Purchase Order Inquiry by Item to display PO details for the selected item. |
| NOTES | This function allows selection of text types to be used by e-commerce module. |
| P&A-1 | Access DSI310 Price and Availability Inquiry to display pricing details as well as availability details for the selected item. This inquiry program can be displayed in 6 different formats. |
| P&A-3 | Access DSI310 Price and Availability Inquiry to display pricing details as well as availability details for the selected item. This inquiry program can be displayed in 6 different formats. |
| P&A-4 | Access DSI310 Price and Availability Inquiry to display pricing details as well as availability details for the selected item. This inquiry program can be displayed in 6 different formats. |
| P&A-5 | Access DSI310 Price and Availability Inquiry to display pricing details as well as availability details for the selected item. This |

inquiry program can be displayed in 6 different formats.

SHP/ITM

Access DSI170 Shipment/Invoice Inquiry by Item to display shipment as well as invoice details for the selected item if any.

Relevant Fields

Item

Name of the item against which stock details are to be displayed.

Substitute item

This is the item to be substituted as the process progresses through each substitute level. A Substitute item is a valid item that would be supplied if there was insufficient stock of the original item ordered. If the first substitute does not have sufficient stock the system looks at the next substitute item on this list if one has been established. Unlimited levels of substitutes can be setup. If there is insufficient stock of the original and the substitute is available then all the substitutes are offered, not half and half.

Stock status

This code identifies the reason why a particular order has been placed on backorder. For example items that are not stocked but indented would be given a specific Stock Status code as would a new product being monitored for the first 3 months after release. These codes are then used in sales analysis to determine for example what proportion of the sales figures of a group of products can be attributed to new products just released.

This code also determines how the system should handle sales orders. For example if it is a new product are backorders allowed.

Unit of measure

This is the unit in which the item is sold. If a pack could be broken for sale this unit of measure needs to be a single unit rather than a Pack. The List Price of the item must also be in this lowest denomination. The system also holds a Purchasing Unit so for example batteries can be ordered in individual units but stored in stock and sold as Packs. Packs could be this unit of measure if a pack cannot be broken.

Packaging

This field indicates the packaging type used for this item. This is for information purpose only.

Brand code

This identifies a specific imprint. This code is not used in the main sales analysis function of the system.

Release number

The Edition assigned to this item's release. This is for information only and would only be used if a product is re-released.

Warehouse

The warehouses in which the item is stored are listed in this field. This is the warehouse from which the goods were originally picked.

Name

This field contains the name of each warehouse.

T

This is type of warehouse. It can be free warehouse, bonded, external or service.

Avail

This indicates the quantity of stock available in the warehouse. **TMSDS/WH-SOHA** determines whether the calculation of stock available is to include backorders, forward orders and reserved stock. Note: Stock availability figures are affected by the warehouse type. If the warehouse type is 'X' External, 'B' Bond or 'S' Service, the stock available is not stock that is available for sale.

In-prog

This field displays the In-progress stock quantities of the item in the warehouse. This figure is derived from this item's orders that are currently being processed by the warehouse and items that are in picking.

Transfer

This field indicates the quantity of items in transfer, both into and out of the warehouse.

On-board

The on-board quantity indicates the number of items currently being shipped or delivered on their way into the warehouse.

On-order

This field identifies the number of items currently on order.

O/S order

This field displays the quantity of stock on outstanding order. Outstanding orders are made up of back orders, forward orders (scheduled and non-scheduled), reservation orders, quotations and lost orders.

3. Select warehouse for which stock details are to be displayed and click option **Details**. Following panel is displayed.

IBS BookMaster v1.6.0, Dispatcher name:BOOKMASTERQ76, [Q76 - BookMasterQ76], Active user:AUKEEPAD

File Functions Tools Window Help

Menu

Find

General Inquiries

- Customer Inquiries
- Document Inquiries
- Outstanding Orders
- Item Inquiries
 - Item Details Inquiry
 - Item General Search Inquiry
 - Item Price & Availability Inquiry
 - Item Price Inquiry
 - Stock Inquiry by Item
 - Trans by Item Inquiry
 - Retrieve Item Buying Price Inquiry
 - Item Supplier Search Inquiry
 - Supplier Item Search Inquiry
- Sales Analysis

Quick Links Agent

Agent

Connection ID: 4150

Server: 10.105.30.33

Port: 4454

Firewall IP: 10.105.30.432

Messages

Could not listen on port 4454 (@ ...)

Templates

Attachments

Messages

*Stock Inquiry by Item

DSI020 > Item Stock Inquiry

Item: 9780836832921 W/H: RF 01 RF WAREHOUSE

Description: PMC - Bus Driver Hb Co: 01 BU

Extended description: Jacqueline Laks Gorman Base curr

Unit of measure: UNITS

Stock on hand: 3

Stock available:

Held by WH:

On forward order:

Reserved putaway:

On backorder: 1

In processing:

In transit:

In picking: 2

On board:

On reserve order:

On order:

For systems:

Requested quantity:

Unmade systems:

Authorised return:

Discrepancy:

Original unit cost:

Next month:

Last unit cost:

Date:

Average unit cost:

Last receipt:

Stock value: .00 Last invoice:

| | Open | Receipt | Credits | Tfr in | Sales | Tfr out | Adjust |
|-----|------|---------|---------|--------|-------|---------|--------|
| Mtd | 3 | | | | | | |
| Ytd | | | | | | | 3 |
| Ltd | | | | | | | 3 |

Relevant Fields

| | |
|----------------------|--|
| Item | Name of the item against which stock details are to be displayed. |
| Description | This is user defined description for the item. |
| Extended description | This is to give additional description for the item. |
| On forward order | This is the quantity of stock on forward order. Forward orders are orders that are placed and are not to be delivered until a specified period into the future. |
| On backorder | <p>This is the quantity of stock on backorder. Backorders consist of:</p> <ul style="list-style-type: none"> -Orders for items not yet produced -Orders for items awaiting release -Orders for items where there is insufficient stock or no stock available. |
| In transit | This is quantity of goods which are in transit. |
| Authorized return | This indicates the number of authorized returns for this item that have been entered into the claims system but have not yet been processed. |
| Original unit cost | This displays the original unit cost of the item. |
| Last unit cost | This field contains the unit cost at which the item was last received. |
| Average unit cost | This displays the average unit cost of the item calculated by dividing the stock value with the stock on hand. (Stock value ÷ Stock on hand = Average unit cost). |
| Stock value | This field contains the value of the stock on hand. |
| Stock on hand | This displays the total number of stock on hand in the selected warehouse. Within the item stock inquiry the quantity represents the quantity of items in the batch |
| Held by WH | Indicate the number of items being held by the warehouse. Warehouse locations can have a status of 'A' = Active or 'H' = Held, if a warehouse location is held all goods within this location will display as held. |
| Reserved putaway | This indicates the number of items that have been received into the warehouse but have not yet been put away. |
| In processing | This indicates the number of items on order currently being processed by the warehouse. |
| In picking | This indicates the number of items on order currently being picked in the warehouse. |
| For systems | Indicates the number of items allocated to systems. |
| Unmade systems | <p>Unmade systems are systems or packs that have not yet been written up an inventory, but for which the corresponding components have already been earmarked, reserved, and made available for sale as individual components.</p> <p>Indicates the number of items allocated to unmade systems.</p> |

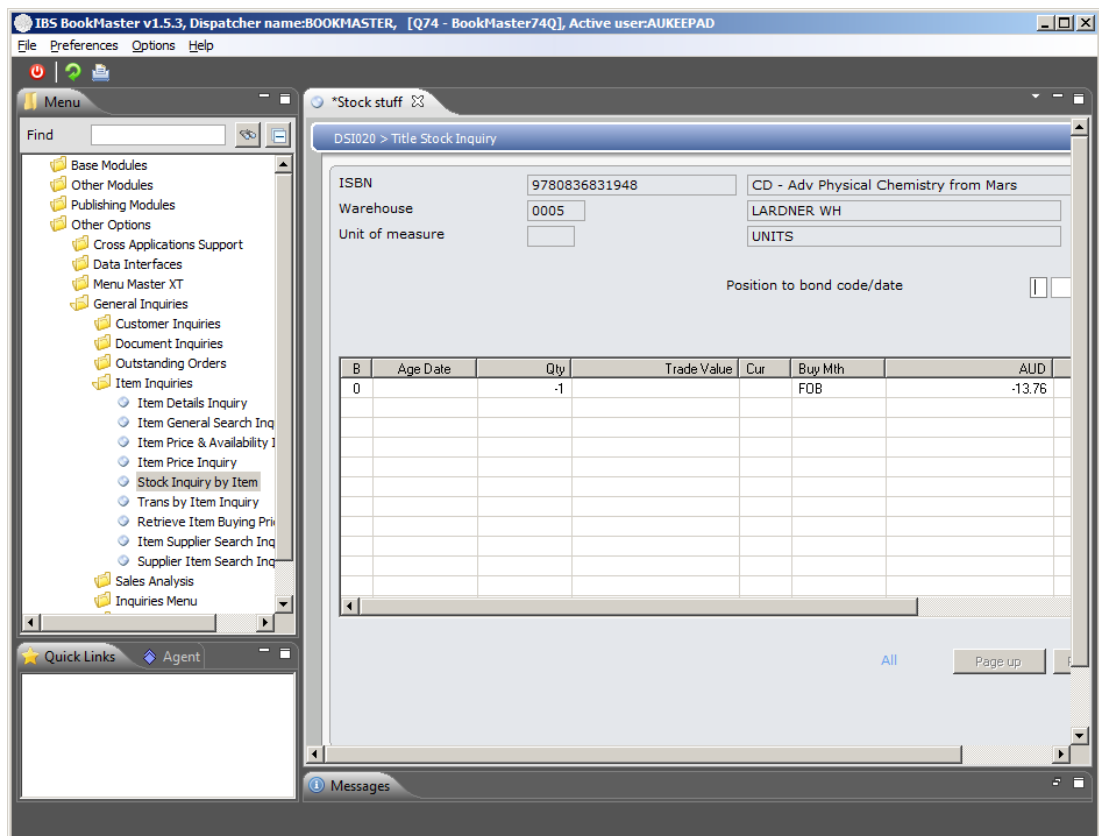
| | |
|-------------------|---|
| Discrepancy | This field displays the number of items in discrepancy if a difference exists between the picked quantity and the computer quantity, the discrepancy quantity will be held until approval of the amended order. |
| Next month | When a sales order is placed in the current month period, the order reduces the current stock-on-hand quantity. After completion of the picking confirmation the number of items allocated to transactions to be processed for the next month period display in this field. |
| Last receipt date | Indicates the date on which transactions for the item were last receipted. |
| Last receipt qty | This field displays the last receipted quantity. |
| Last invoice date | This displays the date on which an invoice was last processed for the item. |
| Last invoice qty | This field displays the last invoice quantity. |
| Open | This contains the quantity of open stock for the item, at the beginning of the particular month and financial year |
| Receipt | Contains the total quantity of receipts entered for the item, for the month-to-date, year-to-date, and the life to date period. |
| Credits | Contains the total number of credits entered for the item, for the month-to-date, year-to-date, and the life to date period. |
| Trf in | This is the total quantity of stock transferred in for the item for the month-to-date, year-to-date and the life-to-date period. |
| Sales | Contains the total number of sales entered for the item, for the month-to-date, year-to-date, and the life to date period. |
| Trf out | Contains the total quantity of stock transferred out, for the item, for the month-to-date, year-to-date, and the life to date period. |
| Adjust | This contains the total quantity of stock adjustments, for the item, for the month-to-date, year-to-date, and the life to date period. |
| Cost | This contains the quantity, base value and trade value of stock for the item, at the end of the particular month. |

This process is subject to User Access Restrictions. Refer to **User Access/Restrictions** documentation for more information on this feature.

Example 2: To Display Costing Details

This example describes how to view costing details for selected warehouse.

1. Repeat steps 1 and 2 from [Example 1: To Display Stock Details for an Item](#).
2. Select warehouse for which costing details are to be displayed and click option **Costing**. Following panel is displayed.



Functions

GMN

Access DSI190 Shipping Receipts Inquiry by GMN to display shipment receipts details for the selected GMN.

Relevant Fields

B

This displays the bond code identifying the PSI type.

The Bond code is used to identify whether the stock is to be sold as Duty Free or Duty Paid. If the field is displayed as:

0 – Duty must be paid on the Item before it is sold to customers

1 – Duty does not have to be paid on the Item until after it has been sold to a customer

Age date

This field is used to indicate the date on which a particular FIFO cost batch was added to the system. In other words, this date represents the age of the stock to which it refers.

Qty

This displays the total number of stock on hand in the selected warehouse. Within the item stock inquiry the quantity represents the quantity of items in the batch.

Trade value

The trade value of the goods in the trade currency.

Cur

This code represents the currency in which transactions take place. Within the Item Stock Inquiry the currency is used to cost the goods.

Buy mth

This is the method used to purchase the product.

The buying method indicates what the components are of the

buying price. This default buying method can be overridden when the purchase order is created.

Base value

This is total value of goods using base currency.

Last receipt qty

This field displays the last receipted quantity.

Last receipt date

Indicates the date on which transactions for the item were last receipted.

3. Select record with option **Details**. Following panel is displayed.

IBS BookMaster v1.5.3, Dispatcher name:BOOKMASTER, [Q74 - BookMaster74Q], Active user:AUKEEPAD

File Preferences Help

Menu

Find

Base Modules
Other Modules
Publishing Modules
Other Options
Cross Applications Support
Data Interfaces
Menu Master XT
General Inquiries
Customer Inquiries
Document Inquiries
Outstanding Orders
Item Inquiries
Item Details Inquiry
Item General Search Inq
Item Price & Availability I
Item Price Inquiry
Stock Inquiry by Item
Trans by Item Inquiry
Retrieve Item Buying Pri
Item Supplier Search Inq
Supplier Item Search Inq
Sales Analysis
Inquiries Menu

Quick Links Agent

*Stock stuff

DS1020 > Title Stock Inquiry

ISBN 9780836831948 CD - Adv Physical Chemistry fr
Warehouse 0005 LARDNER WH
Unit of measure UNITS
Bond code 0
Age date
Source PN
Fifo batch reference DSZ010
Buying method FOB
Unit cost standard
Unit cost free on board
Receipt PN/LNO/SLNO 00019641 / 1 /
Goods manifest number 50153

| Qty | Unit cost | Date |
|--------------|-----------|------------|
| Last receipt | | 24/02/2010 |

| Qty | Base | AUD |
|----------------|------|--------|
| Stock on-hand | -1 | -13.76 |
| Reserved next | | .00 |
| O/S in-transit | | .00 |

Top Page up

Messages

Relevant Fields

Source PN

This field contains the process number of the FIFO batch from which a particular unit cost originates.

Fifo batch reference

This is a ten character, free format text field, which identifies the document from which the FIFO batch originates.

Unit cost standard

This field displays the standard cost of unit.

Unit cost free on board

It is unit free on board cost for a specific product at the time it was ordered, in a trade currency.

Receipt PN/LNO/SLNO

This field contains a unique system generated process number, which is produced for every transaction. The second field displays the line number within the document and the third field contains the sequential sub line number within the document.

Goods manifest number

This field contains the goods manifest number of the goods receipt document.

4. Page Down.

IBS BookMaster v1.5.3, Dispatcher name:BOOKMASTER, [Q74 - BookMaster74Q], Active user:AUKEEPAD

File Preferences Help

Menu

Find

Base Modules
Other Modules
Publishing Modules
Other Options
Cross Applications Support
Data Interfaces
Menu Master XT
General Inquiries
Customer Inquiries
Document Inquiries
Outstanding Orders
Item Inquiries
Item Details Inquiry
Item General Search Inquiry
Item Price & Availability Inquiry
Item Price Inquiry
Stock Inquiry by Item
Trans by Item Inquiry
Retrieve Item Buying Price Inquiry
Item Supplier Search Inquiry
Supplier Item Search Inquiry
Sales Analysis
Inquiries Menu

Quick Links Agent

Messages

*Stock stuff

DSI020 > Title Stock Inquiry

ISBN: 9780836831948 CD - Adv Physical Chemistry fr
Warehouse: 0005 LARDNER WH
Unit of measure: UNITS
Bond code: 0
Age date:
Source PN:
Fifo batch reference: DSZ010
Buying method: FOB
Unit cost standard:
Unit cost free on board:
Qty Base AUD
Month open stock -1 -13.76 .00
Month receipt .00 .00
Month sales .00 .00
Month returns .00 .00
Month S/T out .00 .00
Month S/T in .00 .00
Month adjust .00 .00
Month close -1 -13.76 .00
Bottom Page up

Relevant Fields

Month open stock

This contains the quantity, base value and trade value of open stock for the item, at the beginning of the particular month.

Month receipt

This contains the total quantity, base value and trade value of receipts entered for the item, for the month.

Month sales

This contains the quantity, base value and trade value of sales entered for the item, for the month.

Month returns

This contains the quantity, base value and trade value of returns entered for the item, for the month.

Month S/T out

This contains the total quantity, base value and trade value of stock transferred out for the item, for the month.

Month S/T in

This contains the total quantity, base value and trade value of stock transferred in for the item, for the month.

Month adjust

This contains the total quantity, base value and trade value of stock adjustments for the item, for the month.

Month close

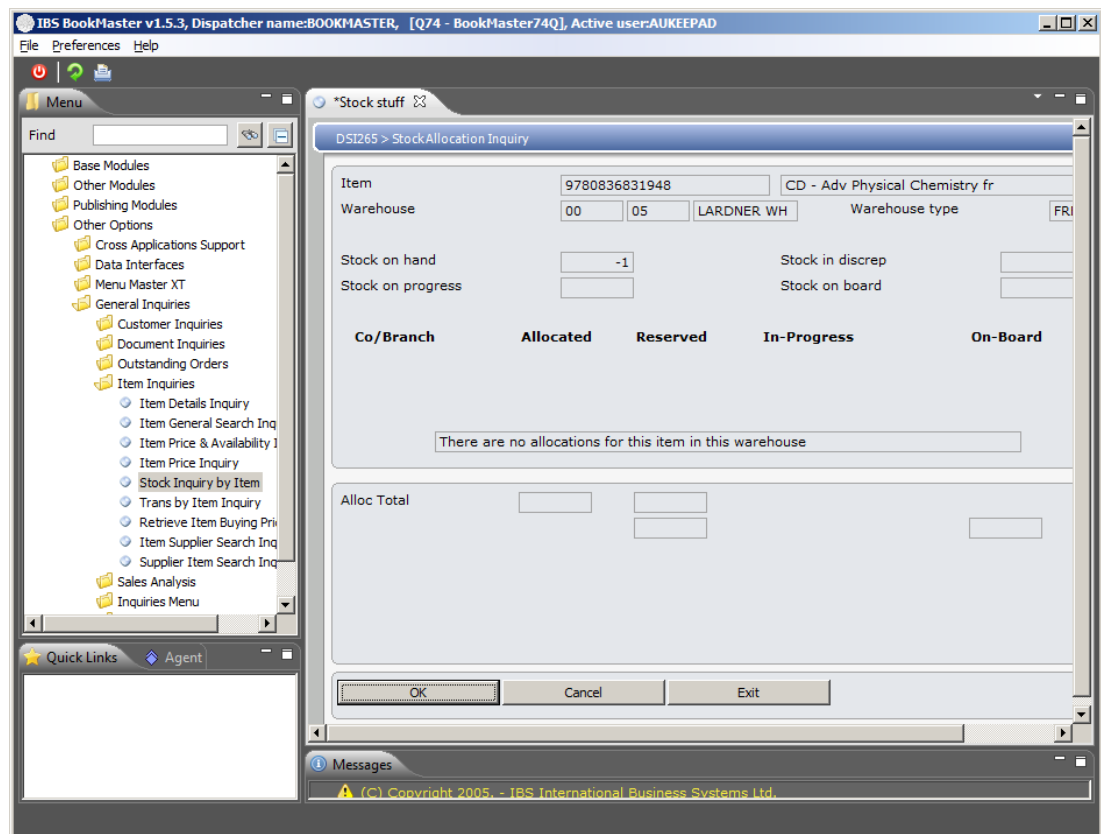
This contains the quantity, base value and trade value of stock for the item, at the end of the particular month.

Example 3: To View Stock Allocations

This example describes how to view stock allocations for the selected item warehouse combination.

1. Repeat steps 1 and 2 from [Example 1: To Display Stock Details for an Item](#).
2. Select warehouse with option **Allocation**.

DSI265 Stock Allocation Inquiry main panel is displayed.



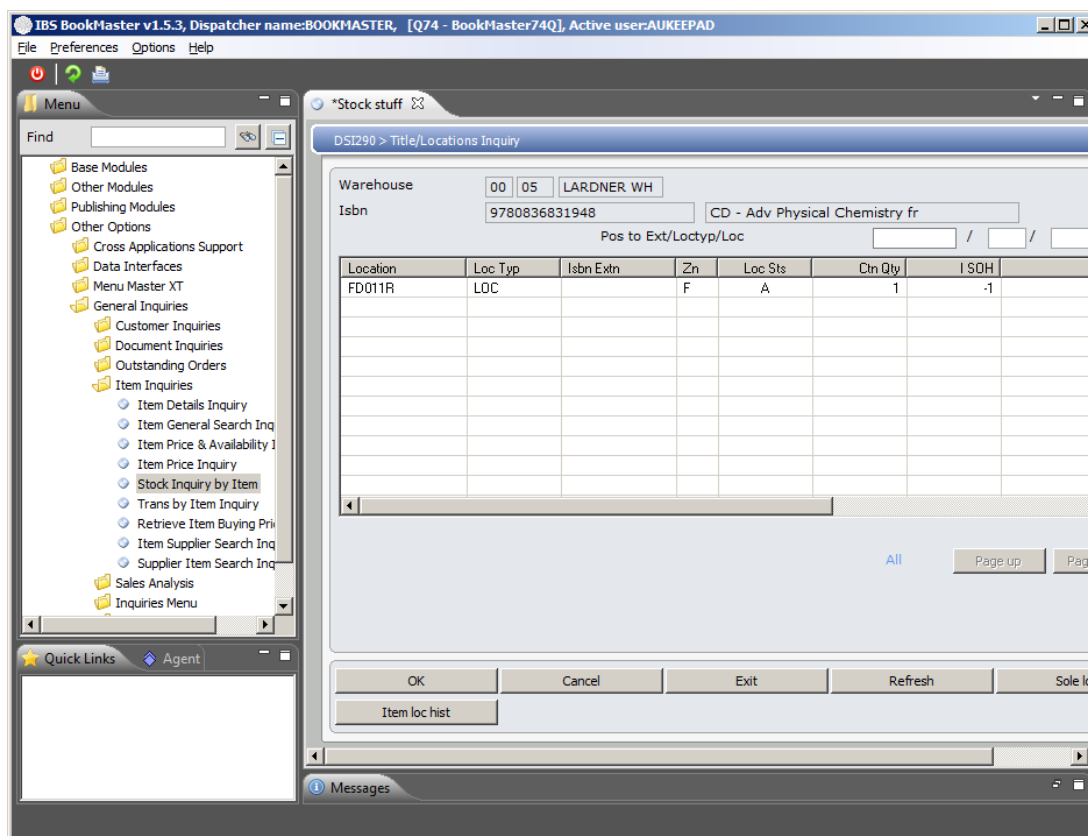
Please refer to **DSI265 Stock Allocation Inquiry** documentation for further information.

Example 4: To Display Warehouse Locations where Item is Stored

This example describes how to view warehouse locations if item is stored in multi locations of a single warehouse.

1. Repeat steps 1 and 2 from [Example 1: To Display Stock Details for an Item](#). Select warehouse with option **Multi location**.

DSI290 Item/Locations Inquiry main panel is displayed.



Please refer to **DSI290 Item/Locations Inquiry** documentation for further information.

Example 5: To Display Stock Information of Pack or System Items

This example describes how to view pack or system components for all warehouses and locations.

1. Repeat steps 1 and 2 from [Example 1: To Display Stock Details for an Item](#). Click function **Packs/System**.

DSI021 Pack/System Component Inquiry panel is displayed.

Please refer to **DSI021 Pack/System Component Inquiry** documentation for further information.

Example 6: To Display Manufacturing Stock

This example describes how to view manufacturing stock details for the same item from all warehouses and locations.

1. Repeat steps 1 and 2 from [Example 1: To Display Stock Details for an Item](#). Click function **MFG Stock**.

TMI200 Stock Inquiry panel is displayed.

Please refer to **TMI200 Stock Inquiry** documentation for further information.

Example 7: To Display Obsolescence Information

This example describes how to view obsolescence information (percentage depreciation) retrieved from the inventory write down.

1. Repeat steps **1** and **2** from [Example 1: To Display Stock Details for an Item](#). Click function **Obsolescence**.

Example 8: To Display Serial Details of an Item

This example describes how to view serial details of an item which is serial controlled.

1. Repeat steps **1** and **2** from [Example 1: To Display Stock Details for an Item](#). Select option **Serial**.

WHI330 Item Serial Number Inquiry panel is displayed.

Please refer to **WHI330 Item Serial Number Inquiry** documentation for further information.