
DSE215 Outstanding Order Release

Overview Orders can be selected for release: By title, By hierarchy, Automatic release, Backorders and New Publication Release, Forward orders, Quotes.

Purpose This panel allows you to:
Outstanding Order Release

Explanation

Not Yet Released titles, which are those that have not been released for sale, can be released from backorder based on their Release dates and hierarchy range of titles.

Selection is based on the following mandatory fields plus various other additional criteria:

- O/S document type
- Warehouse
- Stock avail type

The stock availability calculation for the selection of hierarchy release is based on the following formula:

Stock availability = Stock on hand minus Stock quantity in progress minus Stock quantity on reserve minus Stock quantity on backorder minus Stock quantity on forward order

This is a user defined formula on **TMSDS/OS-SOHA**, which is set up for each Outstanding Order Type. At time of outstanding order release the relevant formula is used, based on the outstanding order type chosen for release.

The formula consists of Y/N flags which instruct the system to take into account the outstanding order quantity already recorded for any of the above outstanding order types, that is, backorder, forward order, and reservation order.

This process is subject to User Access Restrictions. Refer to User Access/Restrictions documentation for more information on this feature.

Examples

This section illustrates examples concerning:

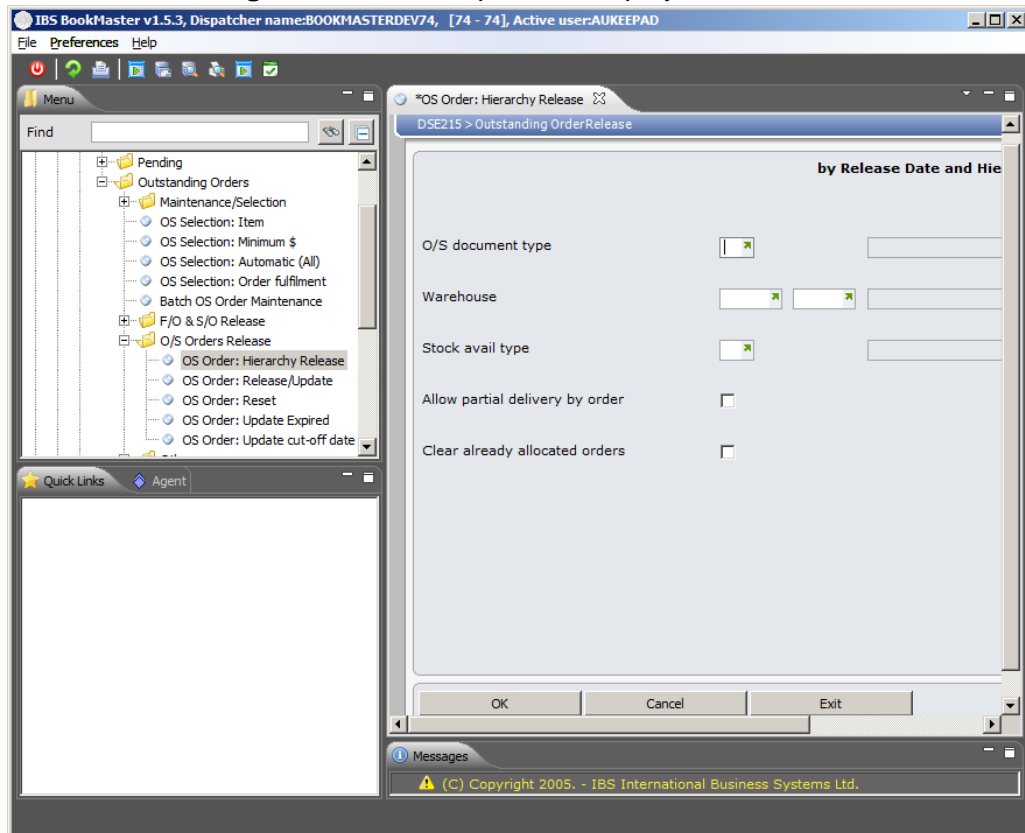
[Example 1: Outstanding Order Release](#)

Example 1: Outstanding Order Release

This example describes how to release outstanding order by release date and hierarchy mode.

1. Select option **OS Order: Hierarchy Release** from Base Modules>Distribution>Order Processing & Billing>Outstanding Orders>O/S Orders Release menu.

DSE215 Outstanding Order Release panel is displayed.



Relevant Fields

O/S document type

Select the outstanding document type for which maintenance is being done.

Warehouse

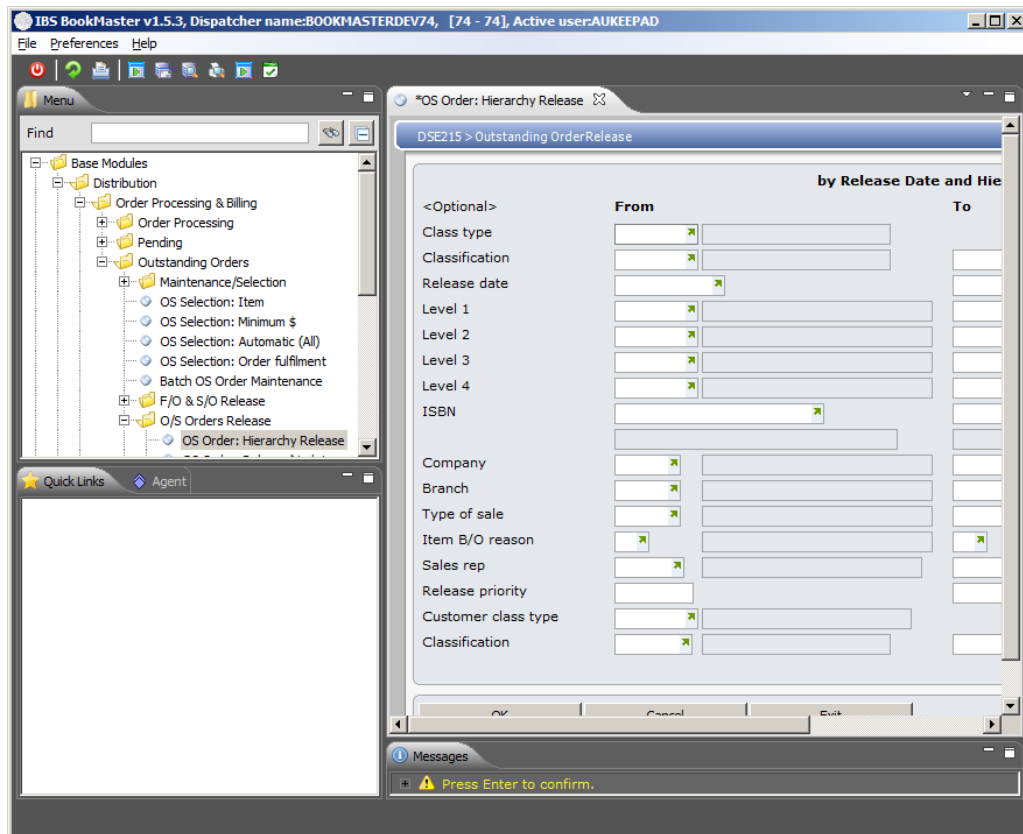
The existing Warehouse on selected Outstanding Orders can be overridden.

Stock available type

This is the type of order available for stock release, for example, normal order stock, forward order stock, backorder stock, etc.

2. Key in required fields and click **OK**.

DSE215 Outstanding Order Release panel is displayed.



Relevant Fields

Company

A range of Company numbers can be selected for inclusion in this release. This code secures a customer's account to a particular company. It is used primarily for multiple company sites.

Release priority

In Order Processing the backorder release priority defaults to a system generated number and can be overridden. If titles on this order go to backorder, the release priority number determines the sequence with which this backorder will be filled and released, once the stock has become available.

The system defaults to the current system date. This sequences backorders by their entry date, thus giving older backorders a higher priority than more recently created backorders. Some products need a high priority to ensure a quick release.

In Outstanding Order Hierarchy Release select which order priority is to be released.

Customer class type

A code used to categorize customers into customer classification types. A group of stores may be classified as a Buying Group for example, and this group of stores uses its own reference for an ISBN when placing orders. Each customer can have multiple codes with effective dates.

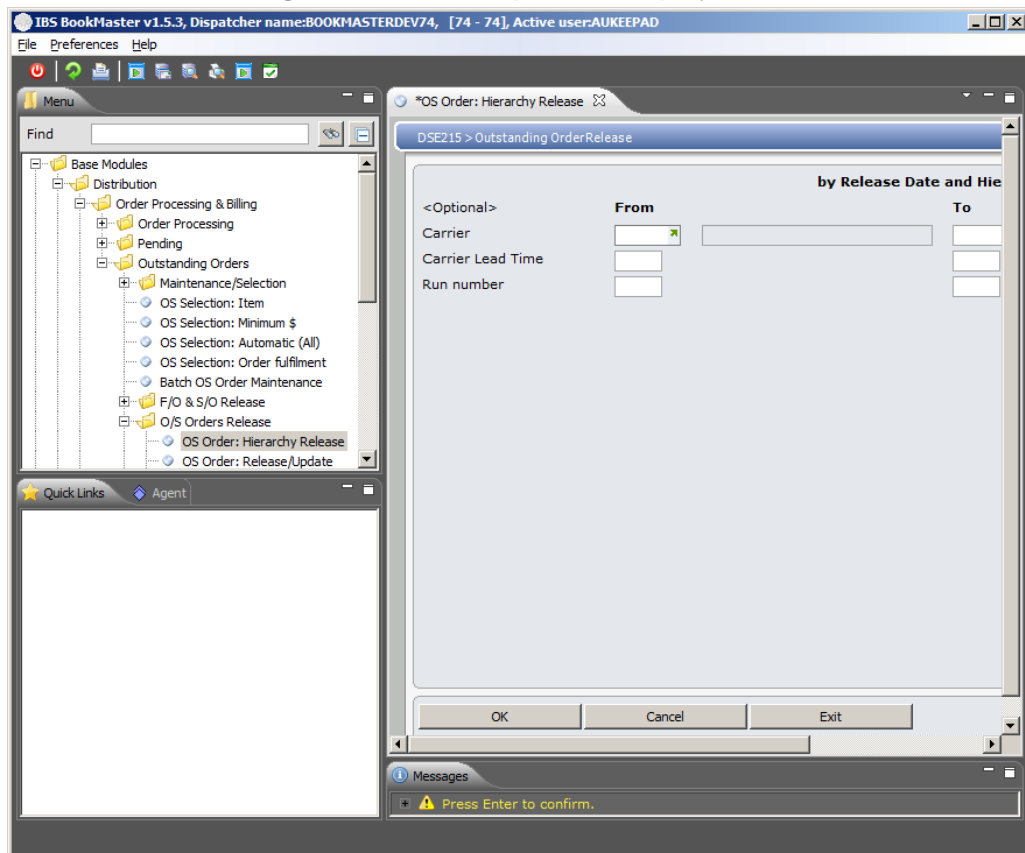
Classification

A range of Customer Classification Codes can be selected for inclusion in this release. This field is a variable as entry depends on the selection made in the Customer Class Type

field.

3. Key in required fields or leave blank and click **OK**.

DSE215 Outstanding Order Release panel is displayed.



Relevant Fields

Carrier

The Carrier code defaults from the Customer Masterfile and can be overridden. A Carrier code identifies the freight carrier responsible for shipping/delivering the goods to the customer. Backorders and Forward Orders can be released for a specific Carrier.

Carrier Lead Time

Enter the carrier lead time to be included in the definition.

Run number

A Run number, allocated to the orders from the Warehouse Run Control screen, needs to be entered.

4. Key in required fields or leave blank and click **OK**.

The system releases the new, not yet released ISBNs from backorder, based on the new ISBNs release dates and hierarchy range of ISBNs.