
WIO430 Shipment Extract

Overview

This program is used to extract shipment and purchase order details for sending to an external system.

Only those records where the status is a blank will be selected. Before a Shipment is processed the program checks that the shipment is valid and no longer closed.

The selected details for the nominated shipment/purchase order will be resent regardless of whether they have changed from what was sent previously.

Examples

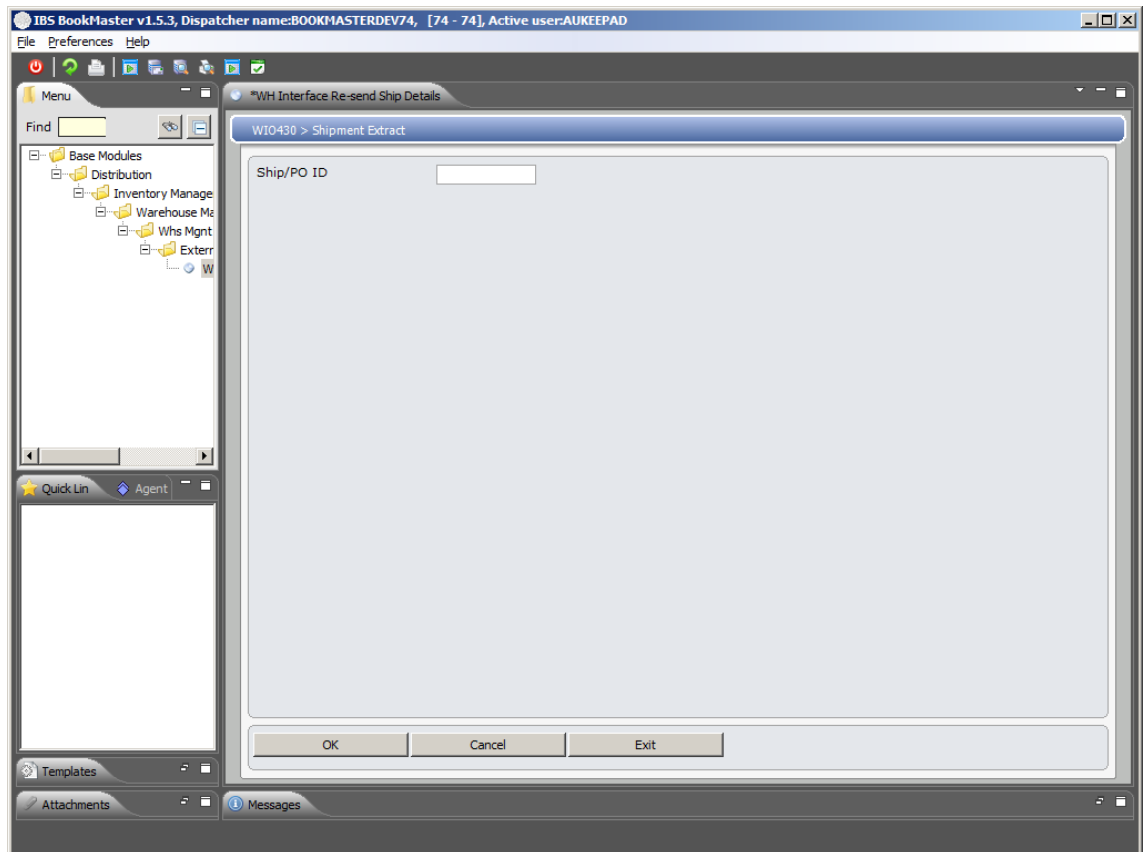
This section illustrates examples concerning:

[Example 1: Resend shipment details](#)

Example 1: Resend shipment details

1. Select menu item **Warehouse Management** from Base Modules> Distribution> Inventory Management> Warehouse Management> Whs Mgnt Interface> External Warehouse menu.

WIO430 Shipment Extract panel will be displayed.



Relevant fields

Ship/PO ID

Key the shipment ID or purchase order number for which shipment details are to be resent to the external system.

2. Key the shipment ID or purchase order number and click OK to Confirm. The details are then resent to the external system and a shipment details report is produced.