
WIO420 Re-Transfer Pick Slips

Overview

This program is used for extracting pick slip orders to be sent to an external system. Pick slips that have been released to the warehouse with the nominated "external" device type in **TMSWH/WI-DEVTP** will be used for this process.

Examples

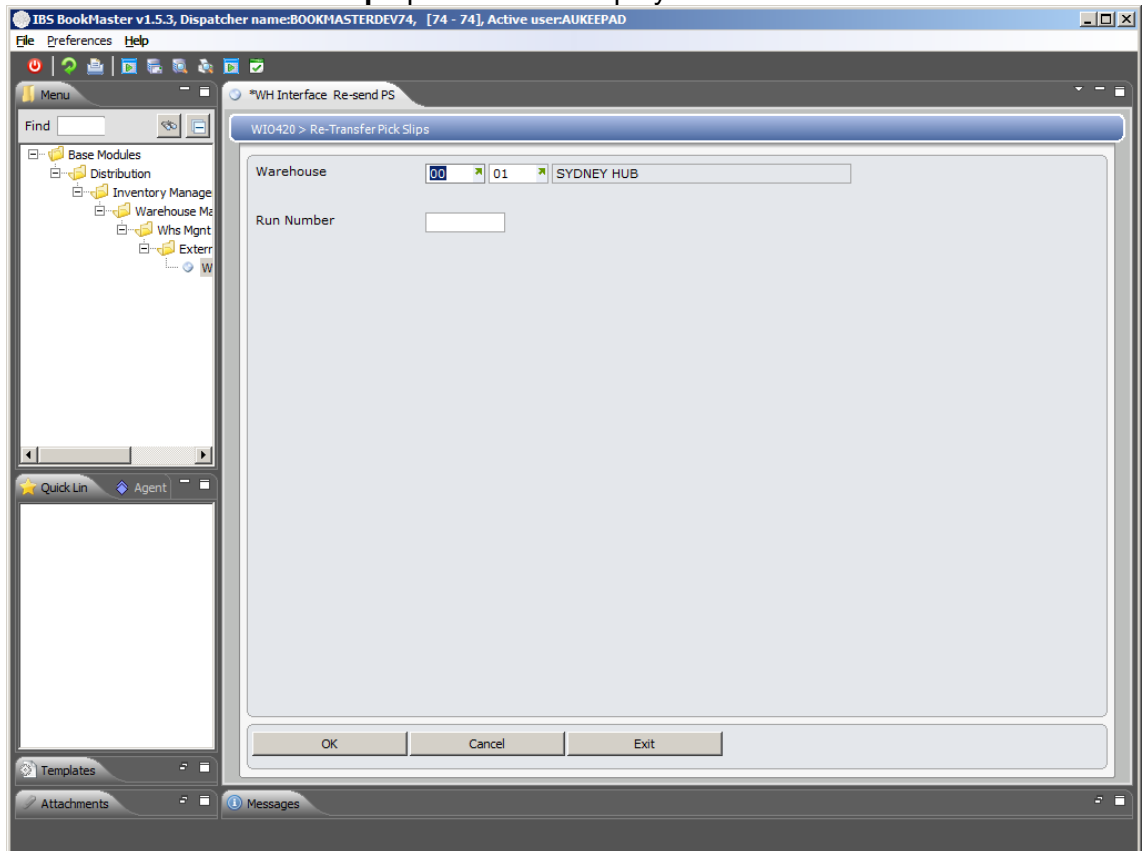
This section illustrates examples concerning:

[Example 1: Re-transfer Pick Slips](#)

Example 1: Re-transfer pick slips

1. Select option **WH Interface Re-send PS** from Base Modules> Distribution> Inventory Management> Warehouse Management> Whs Mgnt Interface menu.

WIO420 Re-Transfer Pick Slips panel will be displayed.



Relevant fields

[Warehouse](#)

The warehouse defaults to the nominated default warehouse where pick slips are released to and can be overridden.

Run Number

Key the warehouse run number for which pick slips are to be resent to the external system.

2. Specify a warehouse and a run number and click **OK**.