
WHW010 Work with Physical Warehouse

Overview	Maintenance of Physical warehouse and associated Logical warehouse is done in through this screen. The physical warehouse can be added, changed, copied and displayed from this screen. The location control is always Y for logical warehouse and always N for virtual warehouse.
Purpose	<p>This panel allows you to:</p> <ul style="list-style-type: none">Add new physical warehouseMaintain existing physical warehouseDisplay details of a selected physical warehouseCopy the attributes of a particular warehouse to a different warehouseMaintain logical warehouse for a selected physical warehouseFilter the screen to retrieve a particular record

Examples

This section illustrates examples concerning:

[Example 1: Addition of a new Physical Warehouse](#)

[Example 2: Maintenance of an existing Physical Warehouse](#)

[Example 3: Display details of a selected Physical Warehouse](#)

[Example 4: Copy a Physical Warehouse](#)

[Example 5: Maintenance of Logical Warehouse for a selected Physical Warehouse](#)

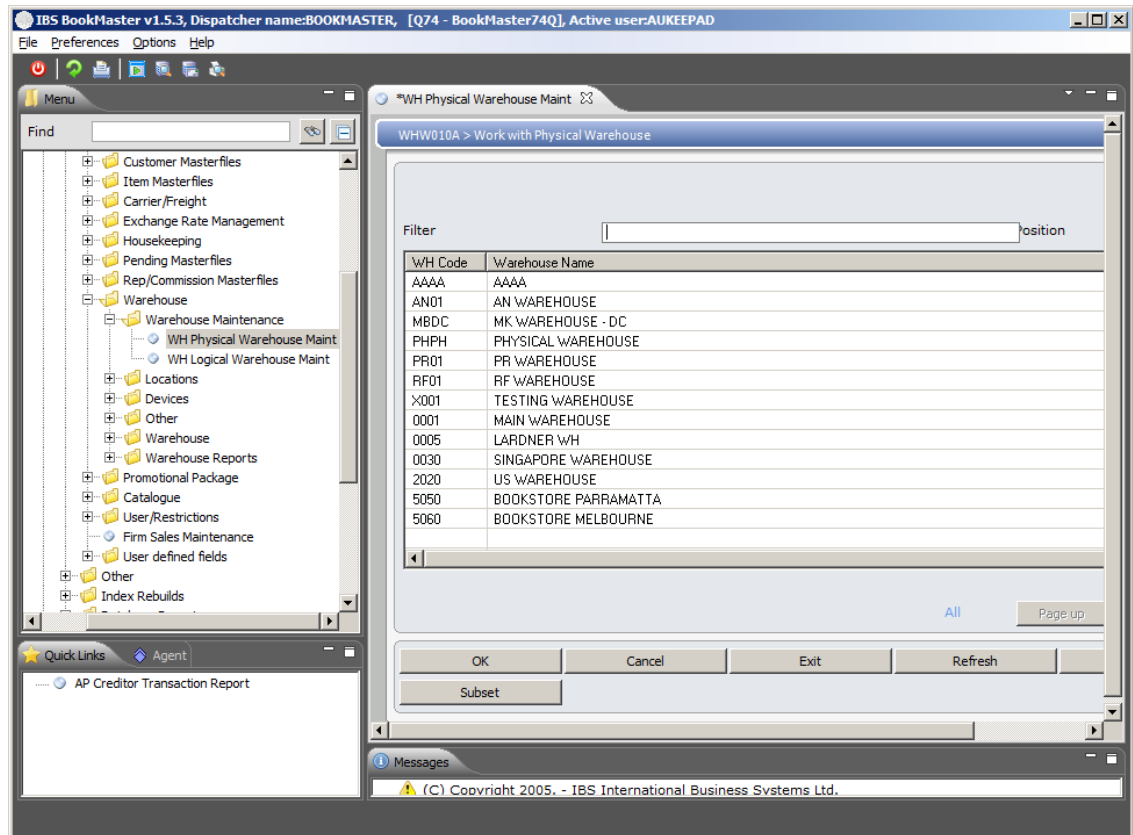
[Example 6: Filter the screen to retrieve a particular record](#)

Example 1: Addition of a new physical warehouse

This example describes how to add a new physical warehouse.

1. Select option **WH Physical Warehouse Maint** from Base Modules>Distribution>Masterfiles>Database Management>Database Management>Warehouse>Warehouse Maintenance menu.

WHW010A Work with Physical Warehouse main panel is displayed.



Options

Logical

Access Work with Physical Warehouse in Logical mode to maintain logical warehouse for a selected physical warehouse.

Change

Access Work with Physical Warehouse in Change mode to make necessary changes in a selected physical warehouse.

Copy

Access Work with Physical Warehouse in Copy mode to copy attributes of physical warehouse to another warehouse.

Display

Access Work with Physical Warehouse in Display mode to display a selected physical warehouse.

Functions

Add

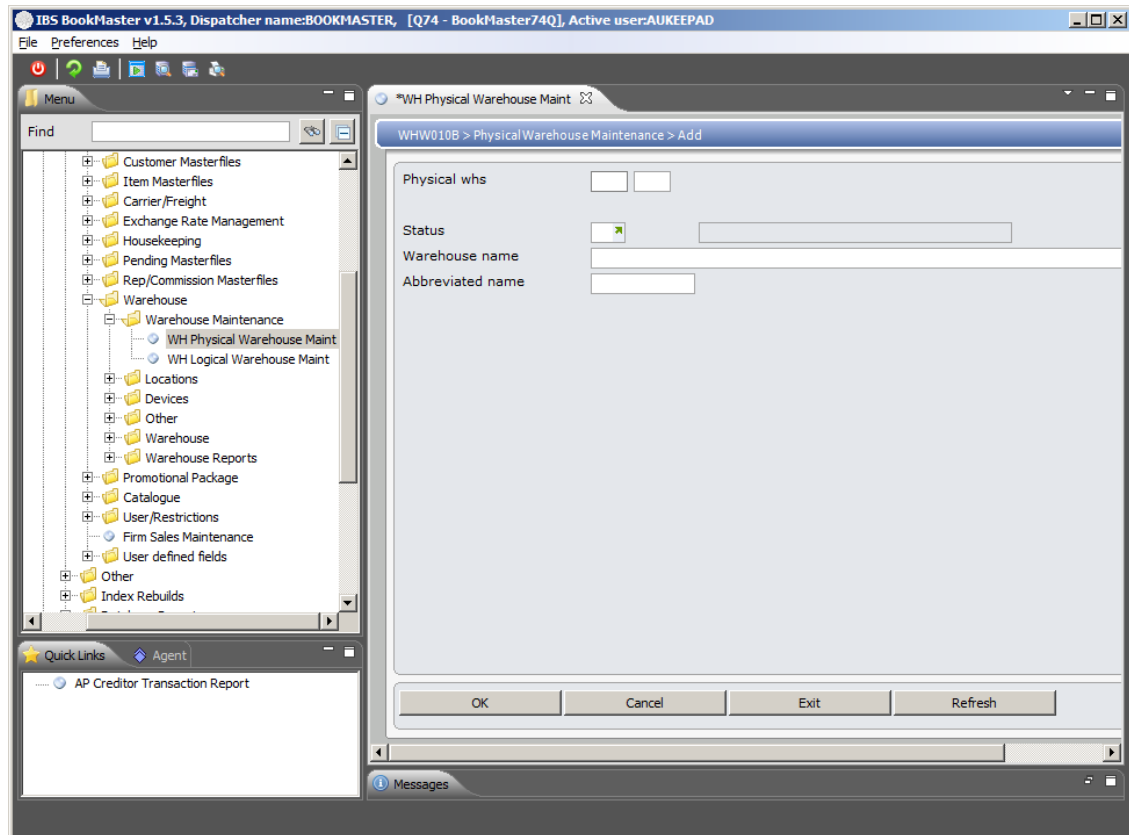
Access Work with Physical Warehouse in Add mode to add a new physical warehouse.

Subset

Access Work with Physical Warehouse in Subset mode to filter the screen to retrieve a particular record.

2. Click **Add**.

WHW010B Physical Warehouse Maintenance panel is displayed in **Add** mode.



Relevant Fields

Physical warehouse

The Physical Warehouse to which this Logical Warehouse is linked.

Status

The status of the Warehouse determines what processing can be done in the warehouse at that point in time. Transactions through a warehouse/ branch can be stopped by changing the warehouse status from A for Active to S for Suspended or C for Closed, if the warehouse/branch is no longer required.

Warehouse name

This is the name or description of the warehouse.

Abbreviated name

An abbreviated name for the warehouse is used in all the inquiries and reports.

3. Key in the required fields and click **OK**

A new Physical Warehouse gets added.

Example 2: Maintenance of an existing physical warehouse

This example describes how to maintain an existing physical Warehouse.

1. Repeat step 1 as in [Example 1: Addition of a new physical warehouse.](#)
2. Select a physical warehouse and click option **Change**.

WHW010B Work with Physical Warehouse panel is displayed in **Change** mode.

3. Make required changes and click **OK** to confirm the changes. This changes the selected physical warehouse.

Example 3: Display details of a selected physical warehouse

This example describes how to display an existing physical Warehouse.

1. Repeat step 1 as in [Example 1: Addition of a new physical warehouse.](#)
2. Select a physical warehouse and click option **Display**.

WHW010B Work with Physical Warehouse panel is displayed in **Display** mode.

3. Click **OK** to confirm the selection. This displays the selected physical warehouse.

Example 4: Copy a physical warehouse

This example describes how to copy attributes of a physical warehouse to another warehouse.

1. Repeat step 1 as in [Example 1: Addition of a new physical warehouse.](#)
2. Select a physical warehouse and click option **Copy**.

WHW010B Work with Physical Warehouse panel is displayed in **Copy** mode.

3. Make required changes and click **OK** to confirm the changes. This copies the selected physical warehouse.

Example 5: Maintenance of logical warehouse for a selected physical warehouse

This example describes how to maintain a logical warehouse for a selected physical warehouse.

1. Repeat step 1 as in [Example 1: Addition of a new physical warehouse.](#)
2. Select a physical warehouse and click option **Logical**.

WHW020A Work with Logical Warehouse panel to maintain logical warehouse for the selected physical warehouse is displayed.

Example 6: Filter the screen to retrieve particular records

This example describes how to filter the screen to retrieve a particular record from existing physical warehouse records

1. Repeat step 1 as in [Example 1: Addition of a new physical warehouse.](#)

2. Click option **Subset**.

WHW020A Work with Physical Warehouse filter panel is displayed.

3. Key in the fields in the filter based on which records are to be retrieved and click **OK**.

WHW020A Work with Logical Warehouse panel is displayed with values subset as per the values used to filter the records.