
WHO150 Load Location File

Overview

Once all the attributes have been defined for the warehouse locations as required for the RF warehousing module to work correctly, this option takes the attributes created and uses them as a template” to fill the Location Masterfile.

The zone will be updated on the Location Item File. If the zone “location maps” are defined in such a way that the same location can appear in multiple zones, such locations will always adopt the last zone for which the location exists in the most recent Location Load.

Purpose

This panel allows you to:

Load the location data of warehouse in Location Masterfile

Examples

This section illustrates examples concerning:

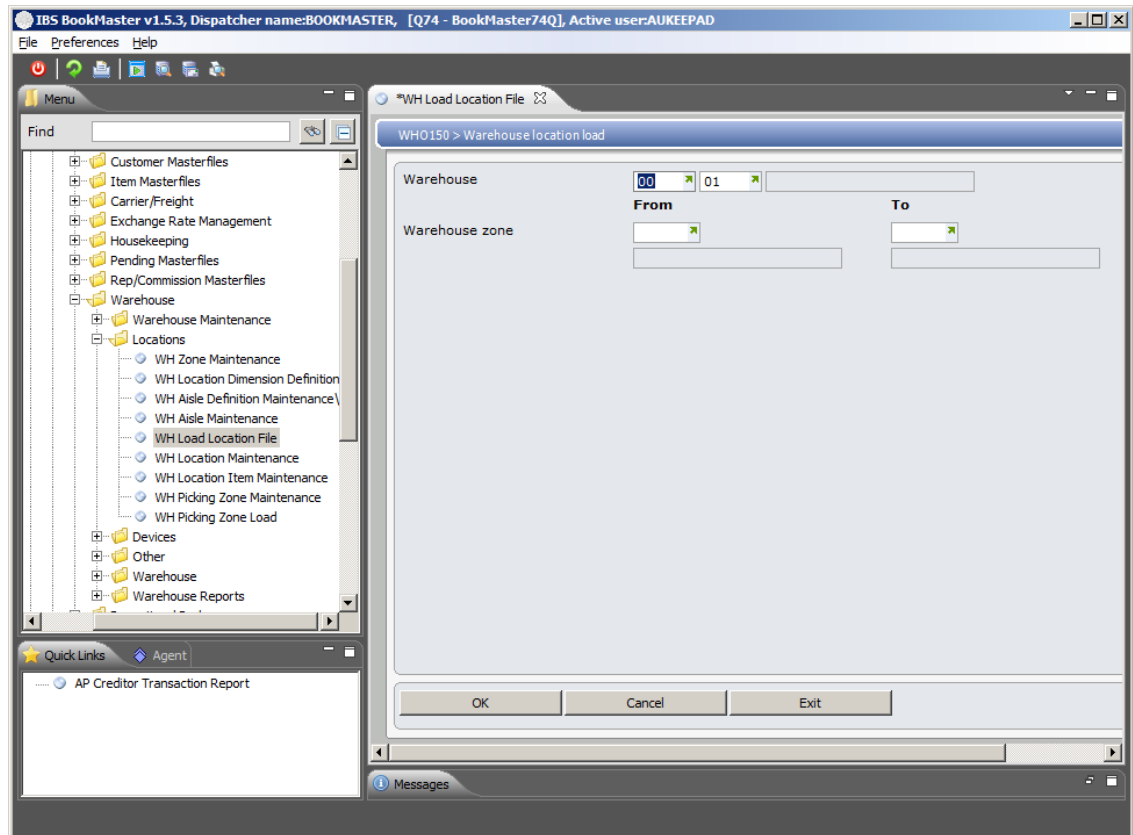
[Example 1: Load the location data of warehouse in Location Masterfile.](#)

Example 1: Load the location data of warehouse in location masterfile

This example describes how to load the location data of warehouse in location masterfile.

1. Select menu option **Load Location File** from Base Modules>Distribution>Masterfiles>Database Management>Database Management>Warehouse>Locations menu.

WHO150 Warehouse Location Load selection panel is displayed.



Relevant fields

Warehouse

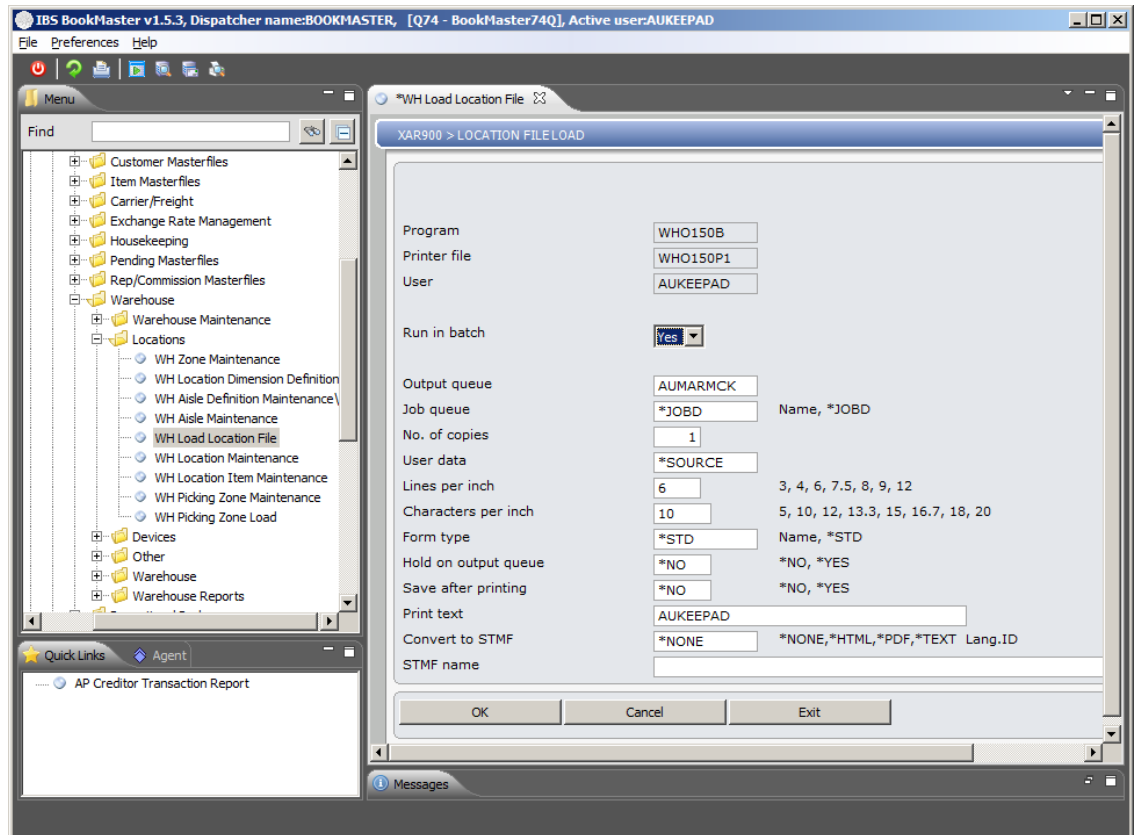
This code consists of a Warehouse Location (2 characters) and Branch Code (2 characters). This is the place where item is stored and from where item is to be picked.

Warehouse Zone

An entry of a Warehouse Zone is optional and can be left blank to select all Warehouse Zones for the nominated Warehouse.

2. Select the Warehouse and Warehouse Zone from the existing list.

XAR900 LOCATION FILELOAD panel is displayed.



3. Click **OK** to produce the report.

This report displays the following information:

- Warehouse Zone
- Location
- Item
- Quantity
- In Progress Quantity
- Reserved Discrepancy

IMS DEVELOPMENT - RELEASE 7.4
 REPORT : WH0150
 RUN DATE : 19/02/09
 RUN TIME : 19:32:53

WAREHOUSE LOCATION LOAD - ERROR REPORT
 WAREHOUSE : 00 01

PAGE :

WAREHOUSE ZONE

LOCATION	ITEM	SOH QTY	----	IN	PROGRESS	QTY	----	RESERVED
				IN	OUT	POSTINV		DISCREPANCY
	AMP800	0		0	118	0		0
				NO LOCATION FOR EXISTING LOC/ITEM RECORD				
				EXISTING LOC/ITEM RECORD HAS AN IN-PROGRESS QTY				
*UNASSIGND	AMP800	2-		0	0	0		0
				NO LOCATION FOR EXISTING LOC/ITEM RECORD				
				EXISTING LOC/ITEM RECORD HAS A STOCK QUANTITY				
FA-01-1-1	BIN1	0		0	5	0		0
				NO LOCATION FOR EXISTING LOC/ITEM RECORD				
				EXISTING LOC/ITEM RECORD HAS AN IN-PROGRESS QTY				
BA0131	CD800	1		0	0	0		0
				NO LOCATION FOR EXISTING LOC/ITEM RECORD				
				EXISTING LOC/ITEM RECORD HAS A STOCK QUANTITY				
D OVRFLOW	CMP6	0		140	0	0		0
				NO LOCATION FOR EXISTING LOC/ITEM RECORD				
				EXISTING LOC/ITEM RECORD HAS AN IN-PROGRESS QTY				
D OVRFLOW	CTN1	0		30	0	0		0
				NO LOCATION FOR EXISTING LOC/ITEM RECORD				
				EXISTING LOC/ITEM RECORD HAS AN IN-PROGRESS QTY				
BA0121	FILM01	50		0	0	0		0
				NO LOCATION FOR EXISTING LOC/ITEM RECORD				
				EXISTING LOC/ITEM RECORD HAS A STOCK QUANTITY				
BA0111	FILM01	5		0	0	0		0
				NO LOCATION FOR EXISTING LOC/ITEM RECORD				
				EXISTING LOC/ITEM RECORD HAS A STOCK QUANTITY				
BA0121	FILM01	138		0	0	0		0