
WHM300 Picking Zone Maintenance

Overview

Picking Zone Maintenance forms part of the Cubing and Zone Picking functionality. This maintenance program is used to sub-divide a warehouse zone into picking zones where an order can be picked by multiple pickers, each responsible for a picking zone.

When the picking in a particular picking zone is complete the partially filled carton and picking slip are forwarded to the next picking zone.

Purpose

This panel allows you to:

- Add a new picking zone sequence
- Maintain an existing picking zone sequence
- Copy an existing picking zone sequence for a warehouse
- Delete an existing picking zone sequence for a warehouse
- Copy all picking zone sequences for a warehouse to another warehouse
- Delete all picking zone sequences for a warehouse
- Display an existing picking zone sequence

Explanation

Picking Zones allow a warehouse to be generically sub-divided into groups of locations, regardless of existing zones and uses.

Whilst accessible whenever a warehouse location is referenced, it is during RF carton-based picking that the functional benefits can be seen. Used in conjunction with order cubing, it is possible to pick-to-carton just the products relevant to a picking zone, then forward the carton to the next picking zone for subsequent products. Whilst it is still possible for one operator to pick an entire order, this function allows cartons to travel and operators to remain within their allocated picking zones, improving picking productivity.

Further, if interfaced to a Material handling and/or picking system, cartons can automatically divert into the necessary picking zones and drive the picking instructions.

Examples

This section illustrates examples concerning:

[Example 1: Addition of a new picking zone sequence](#)

[Example 2: Maintenance of an existing picking zone sequence](#)

[Example 3: Copy of an existing picking zone sequence for a warehouse](#)

[Example 4: Deletion of an existing picking zone sequence for a warehouse](#)

[Example 5: Copy of all picking zone sequences for a warehouse to another warehouse](#)

[Example 6: Deletion of all picking zone sequences for a warehouse](#)

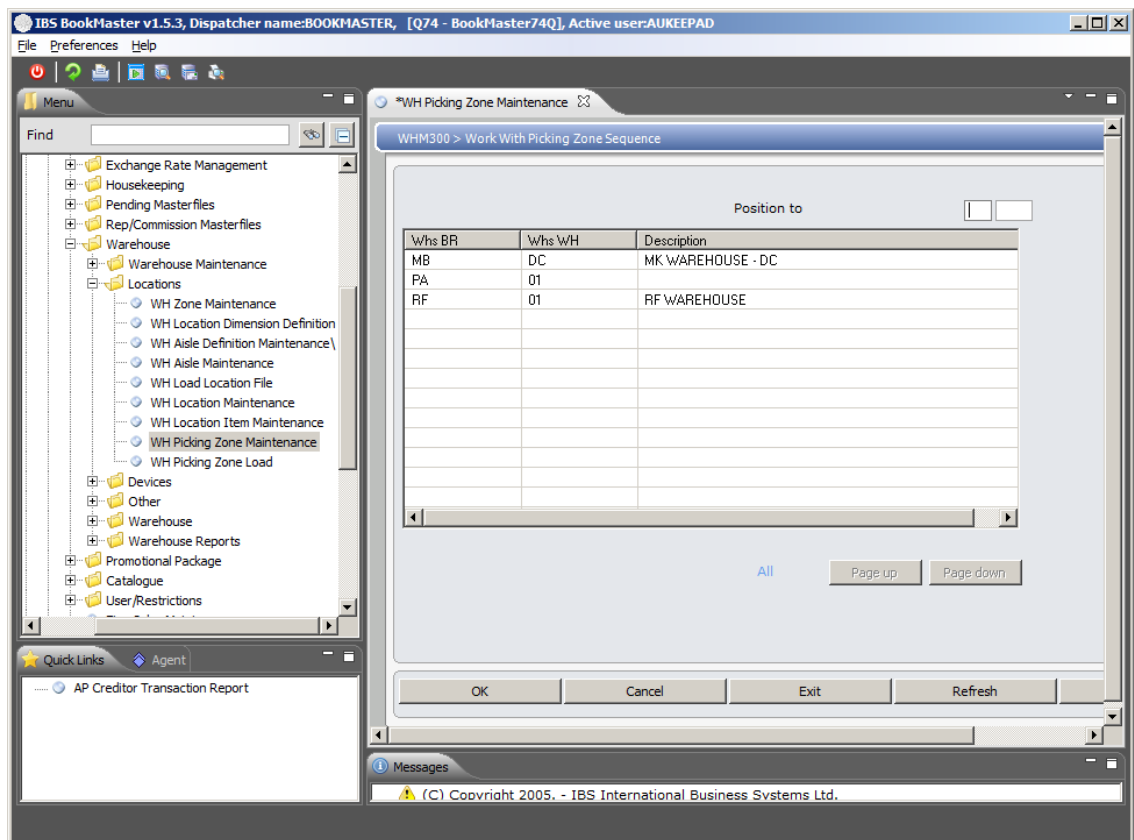
[Example 7: Display of an existing picking zone sequence](#)

Example 1: Addition of a new picking zone sequence

This example describes how to add a new picking zone sequence.

1. Select option **WH Picking Zone Maintenance** from Base Modules>Distribution>Masterfiles>Database Management>Database Management>Warehouse>Locations menu.

WHM300 Work with Picking Zone Sequence main panel is displayed.



Options

Change

Access Work With Picking Zone Sequence in Change mode to make necessary changes in existing Picking Zone Sequence

Copy

Access Work With Picking Zone Sequence in Copy mode to create a new picking zone sequence based on the parameters of an existing sequence

Delete

Access Work With Picking Zone Sequence in Delete mode to delete an existing picking zone sequence

Display

Access Work With Picking Zone Sequence in Inquiry mode to view existing picking zone sequence details.

Functions

Add

Access Work With Picking Zone Sequence in Add mode to add a new picking zone sequence

2. Click **Add**.

WHM300 Work with Picking Zone Sequence panel is displayed in **Add** mode.

The screenshot shows the IBS BookMaster v1.5.3 application interface. The title bar indicates the dispatcher name is BOOKMASTER, the user is AUKEEPAD, and the active window is [Q74 - BookMaster74Q]. The main menu on the left lists various modules, with 'WH Picking Zone Maintenance' selected under the 'Warehouse' category. The main panel displays the 'WHM300 > Work With Picking Zone Sequence > Add' form. This form includes input fields for 'Warehouse', 'Sequence', 'Picking zone', and 'Warehouse zone'. Below these fields are five radio button options: '1=Select all', '2=Select list', '3=Omit list', '4=Include range', and '5=Excl'. A table with columns 'Opt', 'Description', and 'Value' is present, with rows for 'Aisle', 'Bay', 'Level', and 'Position'. At the bottom of the form are buttons for 'OK', 'Cancel', 'Exit', and 'Refresh'. The bottom status bar shows 'Messages'.

Relevant Fields

Warehouse

This code consists of a Warehouse Location (2 characters) and Branch Code (2 characters). This is the place where item is stored and from where item is to be picked.

Sequence

In Aisle Maintenance flag to allow adjustment on all fields or just pick the order. Defaults to 1=allow adjustment on all fields. Can be changed to 2=allows adjustment on pick order only.

In other programs indicate in what sequence the system must apply this definition.

Sequence description

A description of the sequence record, for example the area to be picked

Picking zone

Enter the Zone from where item is to be picked during a picking run

Warehouse zone

This is a logical grouping of aisles or areas in the warehouse set aside for a specific purpose. Define the zone using a 1 or 2 digit code. Examples of user defined zones could be:

F=Forward, B=Bulk, D=Dispatch, R=Receiving, C=Returns,

O=Open, Q=QC (quality control). These codes cannot be changed once created.

NOTE: The Dispatch, Receiving and Returns Zones are reserved zones which must be NOT be setup here but setup in the following Control Files before any other zones are created.

TMSWH/ZONE-DSP Zone describing the dispatch area D

TMSWH/ZONE-RCV Zone describing the receiving R

TMSWH/ZONE-RET Zone describing the returns area C

No Zone Maintenance is required for these reserved zones.

Aisle

This can be any combination of a maximum of 5 characters/numbers by which this Aisle is to be known, according to the warehouse layout.

Bay

This is a section of an aisle, divided into locations of varying sizes depending on use.

Level

This is the level or number of racks within a bay.

Position

This Position field is optional and is the position the contact person holds in the company.

In TMSDS/CM-POSN a position can be identified as a Debtors Contact, Sales Contact, Owner or not required for reporting. The Debtors Contact is shown on the following reports: Aged Trial Balance (ARR010), Debtors That Have Not Made a Payment (ARR150), Customer Masterfile List by Number (DSR010), Customer Summary List by Name (DSR040), Customer List by Price Code (DSR160), Inquiries that display the Debtors Contact Name are Customer History (CHE005), Claims Inquiry (CLI100), Customer Summary Inquiry (DSI071).

3. Key in the fields and click **OK**.

A new picking zone sequence is added.

Example 2: Maintenance of an existing picking zone sequence

This example describes how to maintain an existing picking zone sequence.

1. Repeat step 1 as in [Example 1: Addition of a new picking zone sequence](#).
2. Select an existing warehouse and click option **Change**.

WHM300 Work with Picking Zone Sequence panel with picking zone sequences for the selected warehouse is displayed.

3. Select a picking zone sequence and click option **Change**.

WHM300 Work with Picking Zone Sequence panel is displayed in **Change** mode.

4. Make necessary changes and Click **OK**. This changes the existing picking zone sequence.

Example 3: Copy of an existing picking zone sequence for a warehouse

This example describes how to copy an existing picking zone sequence for a warehouse to create a new sequence based on it.

1. Repeat step **1** and **2** as in [Example 2: Maintenance of an existing picking zone sequence.](#)
2. Select an existing picking zone sequence and click option **Copy**.

WHM300 Work with Picking Zone Sequence panel is displayed in **Copy** mode.

3. Key in a different sequence and Click **OK**. This copies the existing picking zone sequence for a warehouse to create a new sequence based on it.

Example 4: Deletion of an existing picking zone sequence for a warehouse

This example describes how to delete an existing picking zone sequence for a warehouse

1. Repeat step **1** and **2** as in [Example 2: Maintenance of an existing picking zone sequence.](#)
2. Select an existing picking zone sequence and click option **Delete**.

WHM300 Work with Picking Zone Sequence panel is displayed in **Delete** mode.

3. Click **OK** to confirm deletion. This deletes the selected picking zone sequence for the selected warehouse

Example 5: Copy of all picking zone sequences for a warehouse to another warehouse

This example describes how to copy all picking zone sequences for a warehouse to another warehouse.

1. Repeat step **1** as in [Example 1: Addition of a new picking zone sequence.](#)
2. Select a warehouse and click option **Copy**.

WHM300 Work with Picking Zone Sequence panel is displayed in **Copy** mode.

3. Change the warehouse and click **OK**. All the picking zone sequences for the warehouse which was selected are copied to the changed warehouse.

Example 6: Deletion of all picking zone sequences for a warehouse

1. This example describes how to delete all picking zone sequences for a warehouse.
2. Repeat step **1** as in [Example 1: Addition of a new picking zone sequence.](#)
3. Select a warehouse and click option **Delete**.

WHM300 Work with Picking Zone Sequence panel is displayed in **Delete** mode.

4. Click **OK** to confirm deletion. All the picking zone sequences for the selected warehouse are deleted.

Example 7: Display of an existing picking zone sequence

This example describes how to display an existing picking zone sequence.

1. Repeat step 1 as in [Example 1: Addition of a new picking zone sequence.](#)
2. Select a warehouse and click option **Display**.

WHM300 Work with Picking Zone Sequence panel with Picking zone sequences for the selected warehouse is displayed.

3. Select a picking zone sequence and click option **Display**.

WHM300 Work with Picking Zone Sequence panel is displayed in **Inquiry** mode.

4. Make necessary changes and Click **OK**. This changes the existing picking zone sequence.