
WHM290 Location Item Maintenance

Overview

This Location Item Maintenance program enables maintenance (and inquiries) on items within locations for the purpose of holding stock aside for various reasons. Stock may be placed on hold at any time. For example, prior to a picking slip run to prevent the sales order quantity of stock from being picked. Another use for holding locations is when a shipment is received; it can be put away in a held location to ensure stock still on hand is sold before the new shipment stock.

New items can be added to locations if necessary or new locations can be added to items.

Purpose

This panel allows you to:

- Add a location to an item
- Add an item to a location
- Display item/location details
- Add Item/location text
- Delete an item/location
- Display item serial number inquiry

Examples

This section illustrates examples concerning:

[Example 1: Addition of a location to an item.](#)

[Example 2: Addition of an item to a location.](#)

[Example 3: Displaying item/location details.](#)

[Example 4: Addition of Item/location text.](#)

[Example 5: Deletion of an item/location.](#)

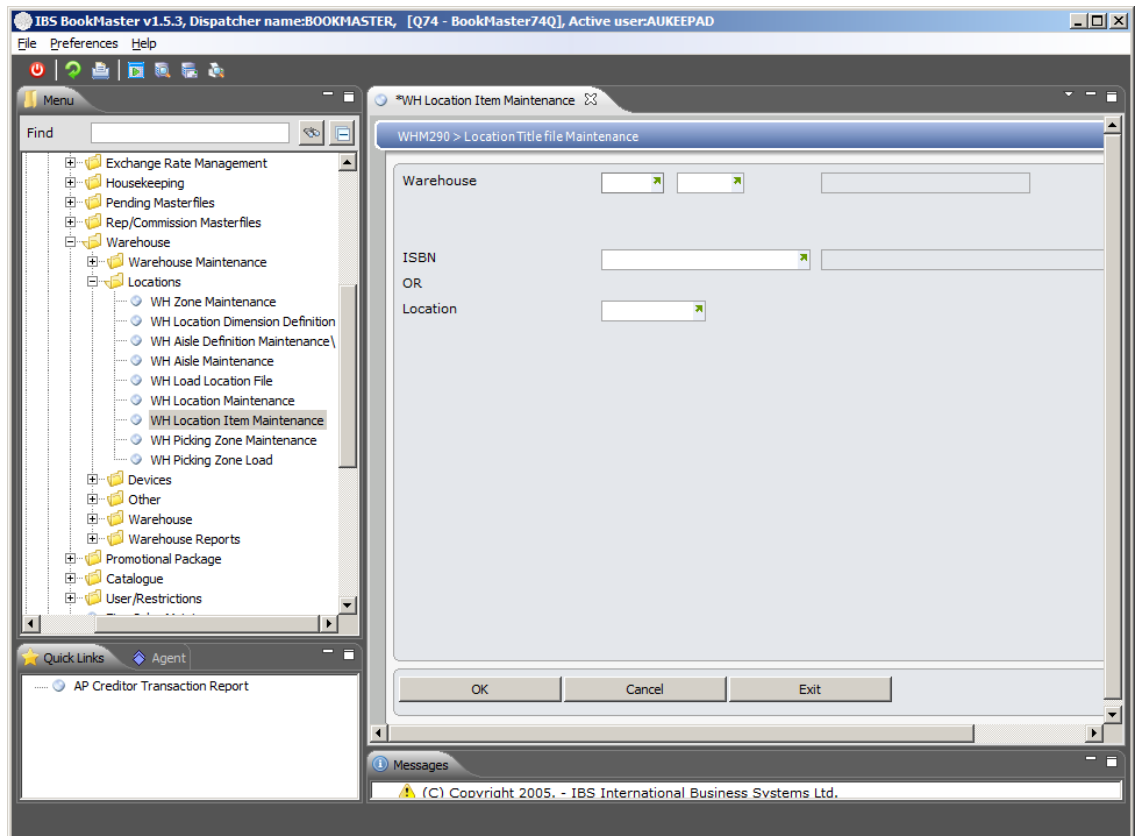
[Example 6: Displaying item serial number inquiry.](#)

Example 1: Addition of a location to an item

This example describes how to add a location to an item.

1. Select option **Location Item Maintenance** from Base Modules>Distribution>Masterfiles>Database Management>Database Management>Warehouse>Locations menu.

WHM290 Location Item File Maintenance selection panel is displayed.



Relevant Fields

Warehouse

Enter the warehouse code for the location where you want to add an item.

Item

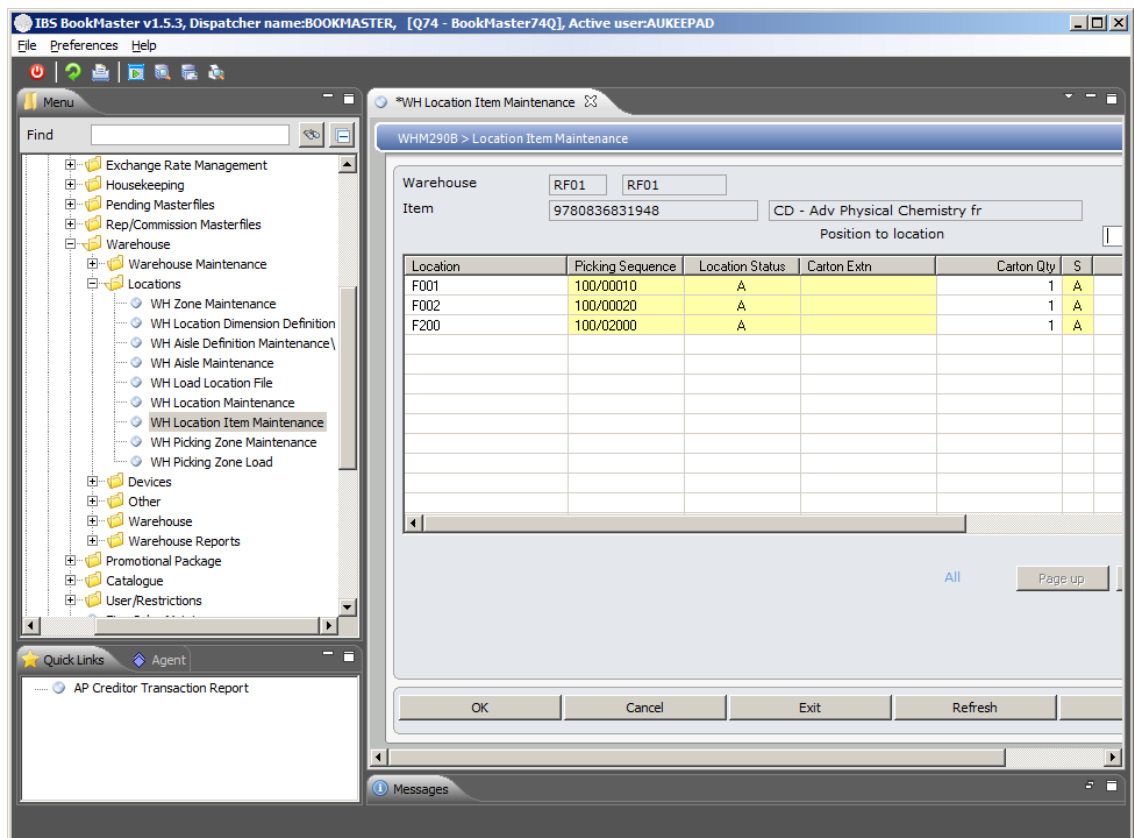
This is the item you want to add to a warehouse location.

Location

Leave blank to search by item only or enter the location.

2. Select a warehouse and an Item and click **OK**.

WHM290 Location Item Maintenance main panel is displayed.



Options

Details

Accesses DSI290 Item/Location Details in display mode to display item/location details

Add text

Accesses DSM900 Item Location Text to enter text for an item

Delete

Accesses WHM290 Item/Location Maintenance in delete mode to delete existing location for an item

Serial

Accesses WHI330 Item serial number inquiry in display mode for item details inquiry.

Functions

Add

Access Location Item Maintenance in Add mode to add new Location to an item

Relevant Fields

Location

The warehouse location which is being added for selected item.

Location status

Displayed in this Loc Sts column is the status of the entire location which can be changed via Location Maintenance WHM050. Changing the location status changes the status of all items in that location.

Pick Sequence

Sequence in which item is to be picked from a location

Extn

This only displays if the item exists with an extension.

Item Location Extensions can be used in various modes:

It can be entered in order entry and the stock with this

extension can be matched exactly when allocating the stock in the warehouse (for example pick by source).

A blank extension can be entered at order entry and the system can allocate an extension, to pick based on predetermined rules in the item location extension control files. For example a return to supplier claim of all products marked with 'CLM' extension.

A blank extension can be entered at order entry and the system uses the extension to sort the products in the warehouse (useful for expiry date picking).

Validation Controls Files to be set up are: ILEXT-VL, ILEXT-V1, ILEXT-V2 and ILEXT-V3.

Carton quantity

This carton quantity for the item, in this location, affects replenishments and defaults to one but can be changed. When a replenishment is performed, it is preferable not to split a carton in a bulk area so movement rules are setup to round to carton quantities. When stock is received the carton quantity is entered. This is normally left as 1 (that is loose units). The key to stock records is ISBN, carton quantity, item extension and location. Thus you can have multiple records for the same item and location for different carton sizes. Normal picking rules for forward shelves allow the system to split a carton to take whatever individual units are required, with no manual stock adjustments necessary. The easiest way to adjust in-stock carton quantities is with Ad-Hoc Warehouse Movements.

Item status

This is the status of the item within the location. Status can be A=Available, or H=Held. Status can be changed to H=Held if, for example, the goods were damaged. If any of the usually underlined fields are not underlined it is because there are transactions in progress.

The difference between Location Status and Location Item Status is:

- Location Status is changed from Location Maintenance which changes the location and all items to status H.

- Location Item status (for example if the supplier advises that the batch is damaged, this item can be held). Any location/item/extension/carton quantity combination held here has NO effect on any other stock records in this location.

Physical SOH

This is the amount of stock on hand of this item in the various locations.

In progress out

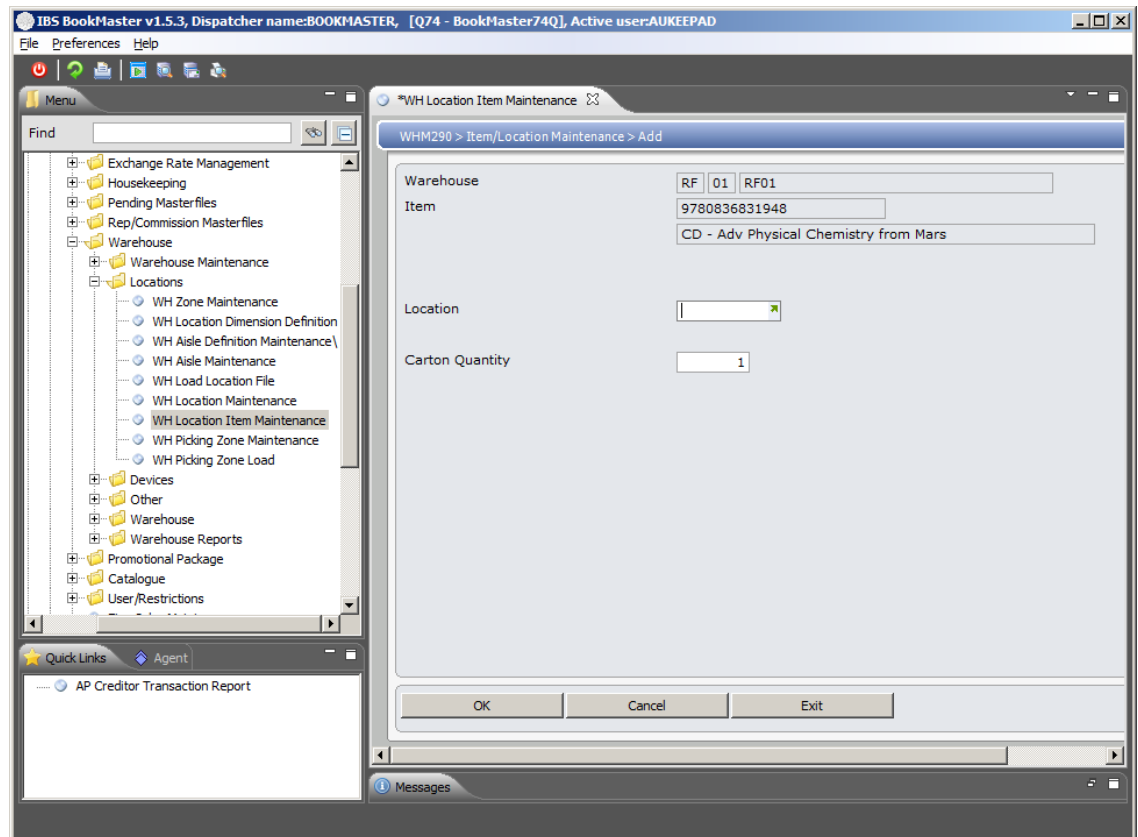
This is the quantity of goods which have been moved out of this location via a two step process. The final confirmation step of a Picking Slip, Credit or Transfer is still to be performed and therefore the movement is in progress.

In progress in

This is the quantity of goods to be moved into the location. The final confirmation step of stock receipt transactions is still to be performed and therefore the movement is in progress.

3. To add a location for the selected item, click **Add**.

WHM290 Item/Location Maintenance panel is displayed in Add mode.



Relevant Fields

Location

The warehouse location which is being added for selected item.

Carton quantity

The carton quantity of the item being placed into this location. This is the number of different items in the carton.

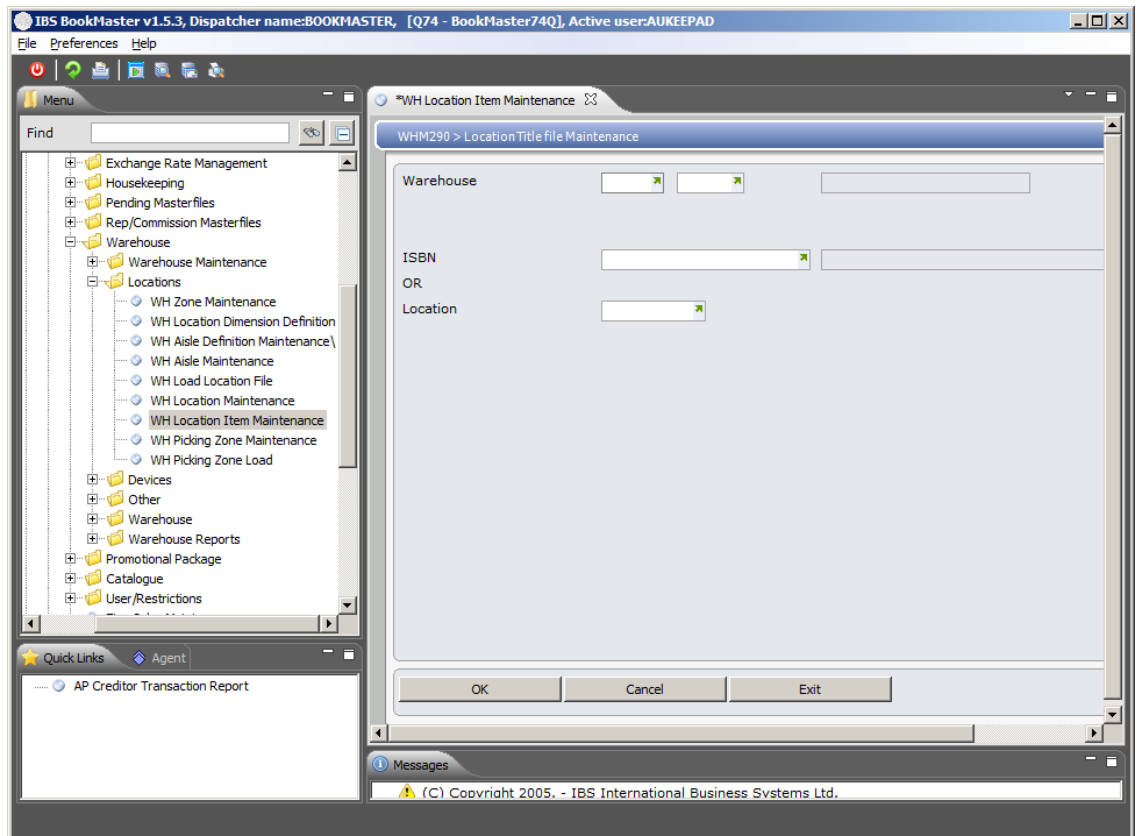
4. Key in the required fields and click **OK**. This adds new location for the selected item.

Example 2: Addition of an item to a location

This example describes how to add an item to a location.

1. Repeat step 1 as in [Example 1: Addition of a location to an item.](#)

WHM290 Location Item File Maintenance selection panel is displayed.



Relevant Fields

Warehouse

Enter the warehouse code for the location where you want to add a item.

Item

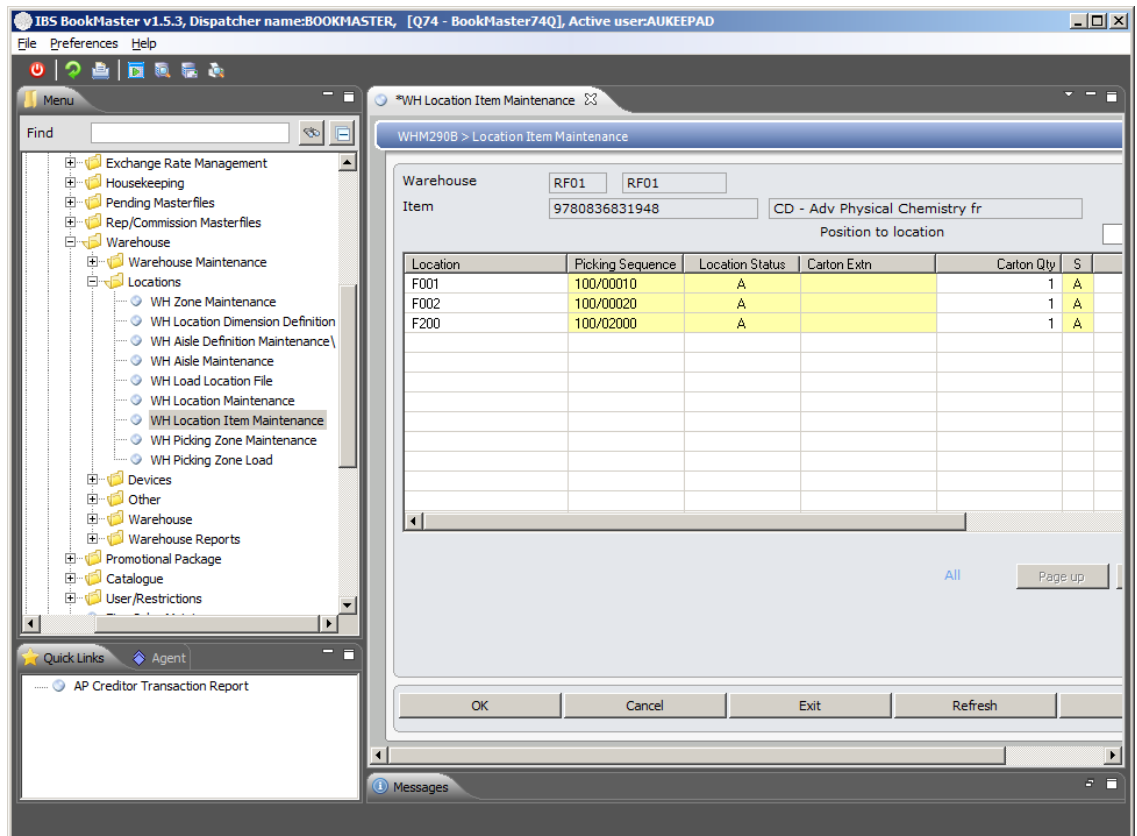
This is the item you want to add to a warehouse location.

Location

Leave blank to search by item only or enter the location.

2. Select a warehouse and a location and click **OK**.

WHM290 Location Item Maintenance main panel is displayed.



Options

Details

Accesses DSI290 Item/Location Details in display mode to display item/location details

Add text

Accesses DSM900 Item Location Text to enter text for an item

Delete

Accesses WHM290 Item/Location Maintenance in delete mode to delete existing item for a location

Serial

Accesses WHI330 Item serial number inquiry in display mode

Functions

Add

Access Location Item Maintenance in Add mode to add an item to a location

Relevant Fields

Item

The warehouse item which is being added to selected location.

Description

Description of item which is being added to selected location.

Extn

This only displays if the item exists with an extension.

Item Location Extensions can be used in various modes:

It can be entered in order entry and the stock with this extension can be matched exactly when allocating the stock in the warehouse (for example pick by source).

A blank extension can be entered at order entry and the

system can allocate an extension, to pick based on predetermined rules in the item location extension control files. For example a return to supplier claim of all products marked with 'CLM' extension.

A blank extension can be entered at order entry and the system uses the extension to sort the products in the warehouse (useful for expiry date picking).

Validation Controls Files to be set up are: ILEXT-VL, ILEXT-V1, ILEXT-V2 and ILEXT-V3.

Carton quantity

This carton quantity for the item, in this location, affects replenishments and defaults to one but can be changed. When a replenishment is performed, it is preferable not to split a carton in a bulk area so movement rules are setup to round to carton quantities. When stock is received the carton quantity is entered. This is normally left as 1 (that is loose units). The key to stock records is ISBN, carton quantity, item extension and location. Thus you can have multiple records for the same item and location for different carton sizes. Normal picking rules for forward shelves allow the system to split a carton to take whatever individual units are required, with no manual stock adjustments necessary. The easiest way to adjust in-stock carton quantities is with Ad-Hoc Warehouse Movements.

Item status

This is the status of the item within the location. Status can be A=Available, or H=Held. Status can be changed to H=Held if, for example, the goods were damaged. If any of the usually underlined fields are not underlined it is because there are transactions in progress.

The difference between Location Status and Location Item Status is:

-Location Status is changed from Location Maintenance which changes the location and all items to status H.

-Location Item status (for example if the supplier advises that the batch is damaged, this item can be held). Any location/item/extension/carton quantity combination held here has NO effect on any other stock records in this location.

Physical SOH

This is the amount of stock on hand of this item in the various locations.

In progress out

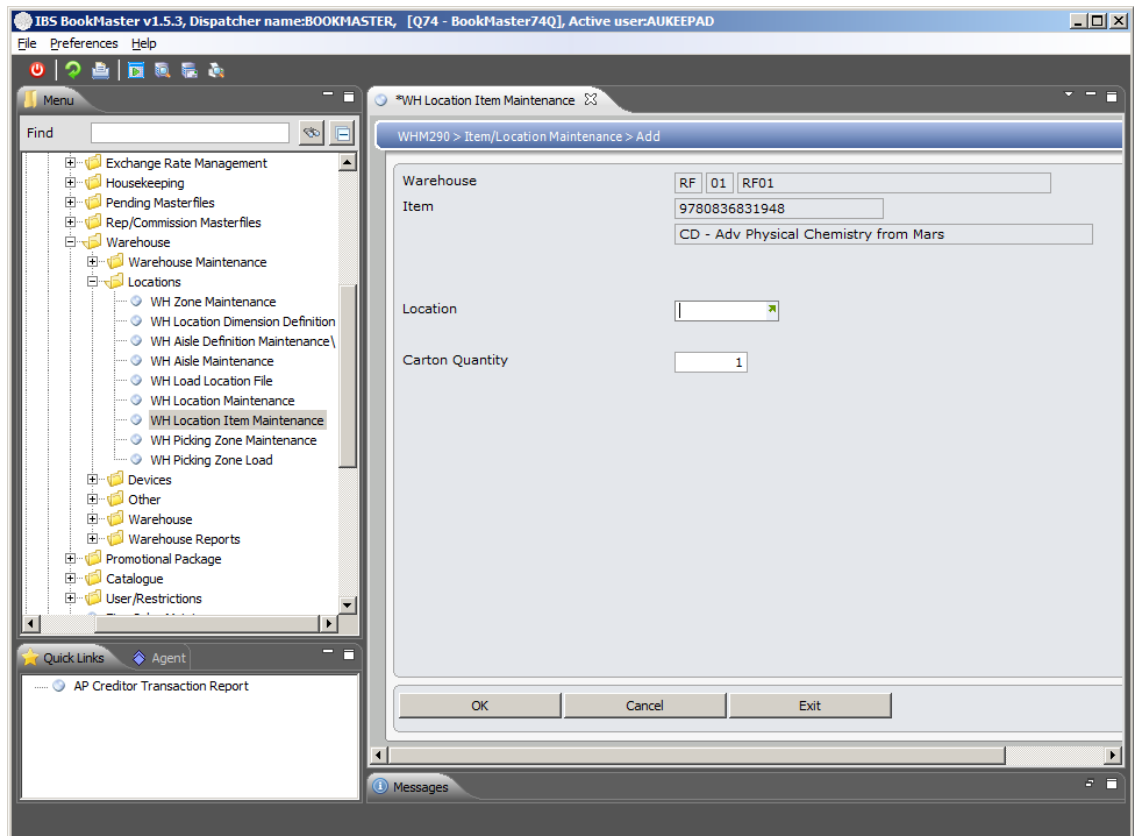
This is the quantity of goods which have been moved out of this location via a two step process. The final confirmation step of a Picking Slip, Credit or Transfer is still to be performed and therefore the movement is in progress.

In progress in

This is the quantity of goods to be moved into the location. The final confirmation step of stock receipt transactions is still to be performed and therefore the movement is in progress.

3. To add an item to a selected location, click **Add**.

WHM290 Item/Location Maintenance panel is displayed in add mode.



Relevant Fields

Item

The warehouse Item which is being added to selected location.

Carton quantity

The carton quantity of the location placed into this Item. This is the number of different locations in the carton.

4. Key in the required fields and click **OK**. This adds new item for the selected location.

Example 3: Displaying location details

1. Repeat step 1 as in [Example 1: Addition of a location to an item.](#)
2. Select an existing location and click on **Details**.

DSI290 Item/Location Details appears in display mode.

This displays existing details of the selected location.

Note: For item details repeat the same procedure for example 2.

Example 4: Addition of Item location text

1. Repeat step 1 as in [Example 1: Addition of a location to an item.](#)
2. Select an existing location and click on **Add Text**.

DSM900 Item Location Text appears in add mode and allows adding text for the selected location.

Note: For item text repeat the same procedure for example 2.

Example 5: Deletion of a location record for the product

This example describes how to delete existing location.

1. Repeat step 1 as in [Example 1: Addition of a location to an item.](#)
2. Select an existing location and click on **Delete**.

WHM290 Location Item Maintenance appears in delete mode and allows deleting existing location.

3. Click **OK** to confirm deletion. This deletes the existing dimension definition.

Note: For item deletion repeat the same procedure for example 2.

Example 6: Displaying item serial location inquiry

1. Repeat step 1 as in [Example 1: Addition of a location to an item.](#)
2. Select an existing location and click on **Serial**.

WHI330 Item Serial Number Inquiry appears in inquiry mode and allows inquiry for existing item details.