
WHM250A W/H Operating Days Maintenance

Overview

Operating Days for a warehouse are indicated by flagging the days that are considered to be working days.

For each month you are able to maintain each day of the month. You may want to change public holidays to a non working day.

The sections on Operating Days and Stage Lead Times relate to warehouse statistics. These will provide the warehouse manager or supervisor with productivity statistics.

Purpose

This panel allows you to:

Maintain Warehouse Operating Days

Examples

This section illustrates examples concerning:

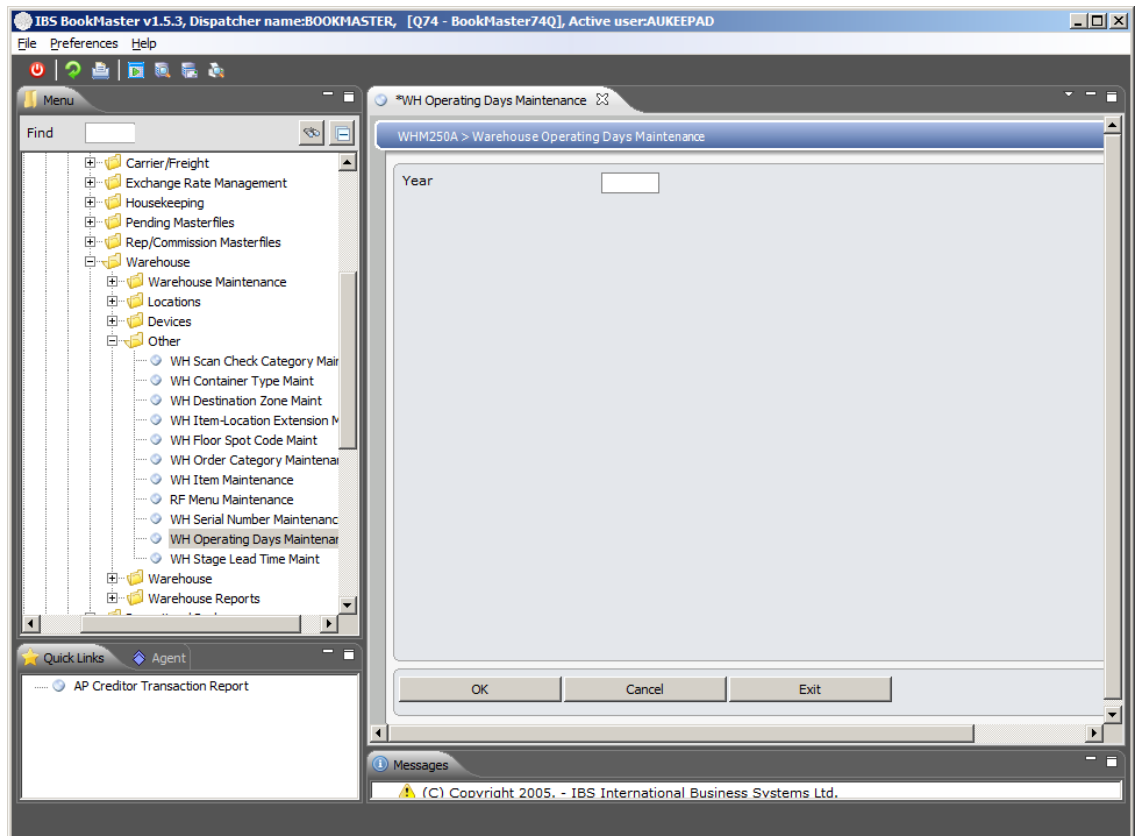
[Example 1: Maintenance of Warehouse Operating Days.](#)

Example 1: Maintenance of Warehouse Operating Days

This example describes how to maintain Warehouse Operating Days.

1. Select option **WH Operating Days Maintenance** from Base Modules>Distribution>Masterfiles>Database Management>Database Management>Warehouse>Other menu.

WHM250A Warehouse Operating Days Maintenance selection panel is displayed.



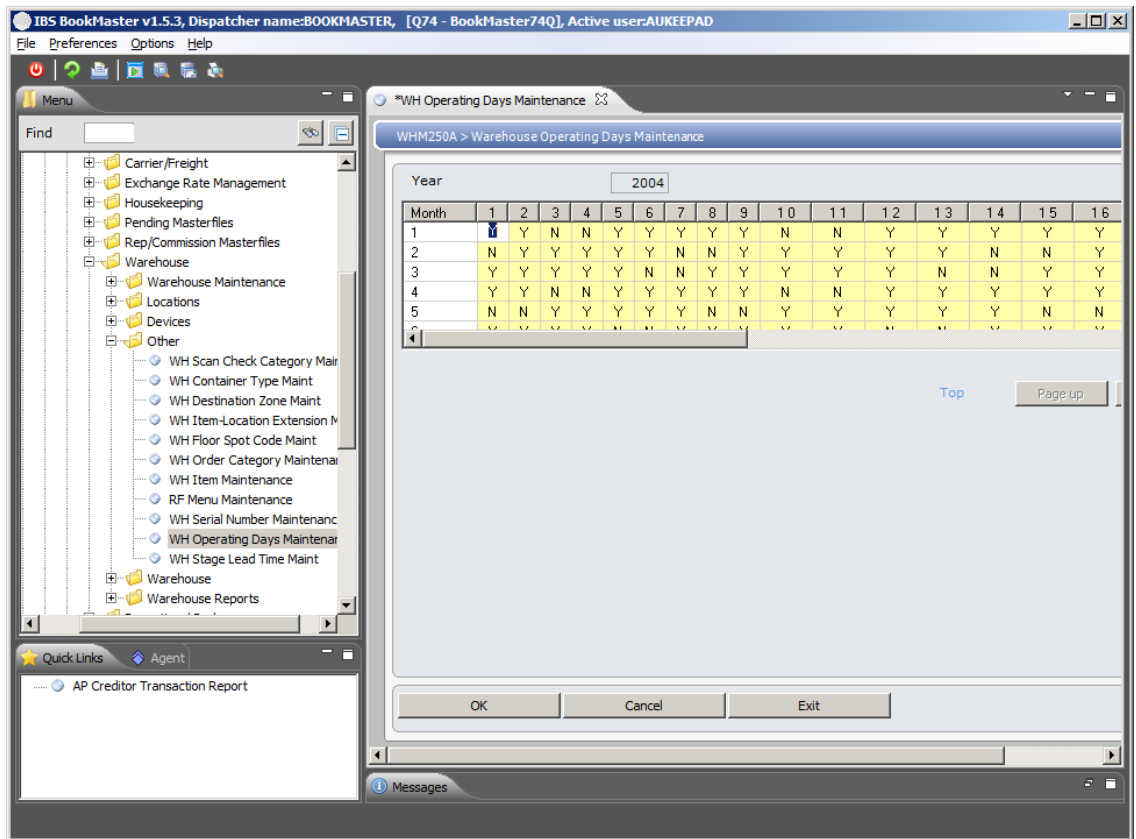
Relevant Fields

Year

This is the year for which to set the warehouse operating days and is mandatory.

2. Select a year and click **OK**.

WHM250A WH Operating Days Maintenance main panel is displayed.



Relevant Fields

Working day

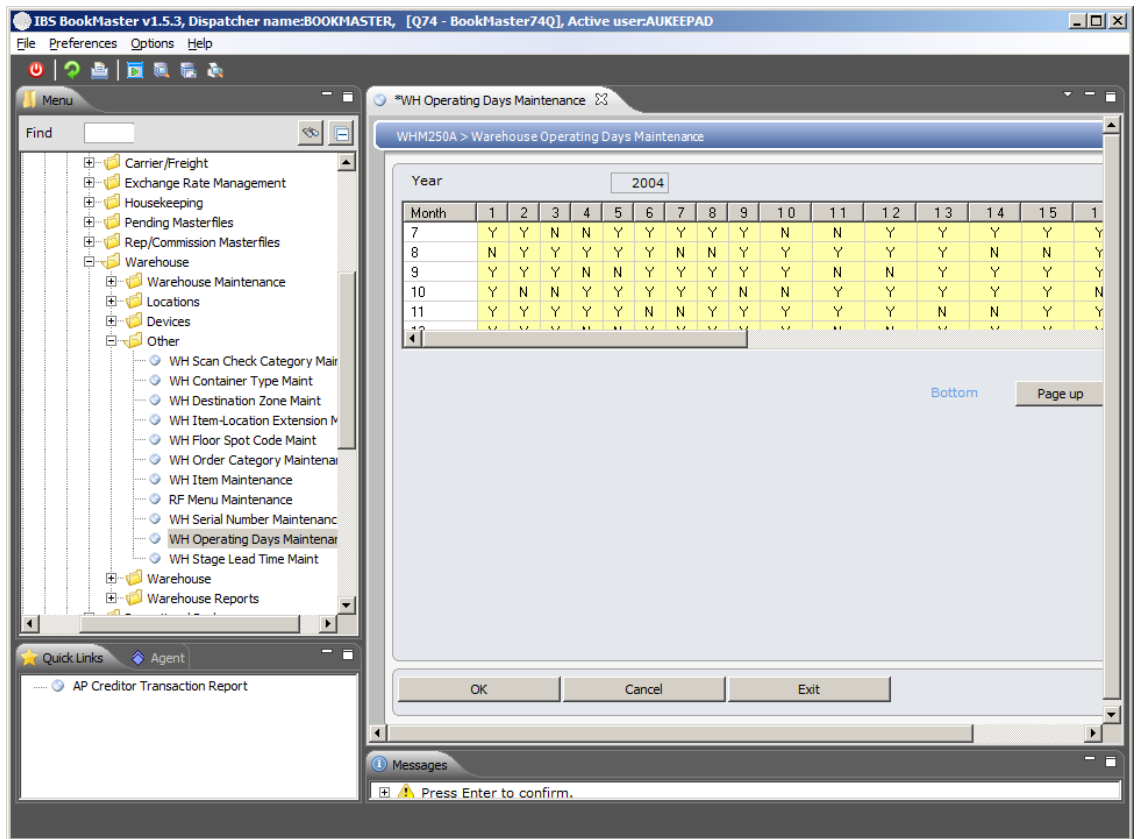
Entry of each working day is required. This flag determines whether the specified day is a working day or not. If the flag is set to:

Y this is recorded as a working day.

N this is recorded as a non working day.

Key a Y/N for each day of the week.

3. Page down for next six months.



- Set the flags against each day for each month as **Y** to indicate a working day or **N** to indicate a non-working day and click **OK**.

Operating days for a warehouse is maintained.