
WHM100 Action Types Maintenance

Overview The Action Types Maintenance program enables the user to create the Action Types for a selected Radio Frequency (RF) or paper warehouse.

An Action Type is defined for any system generated stock movement from pickable zones within the Warehouse. For example moving stock from Bulk to Forward and then from forward to Dispatch, Receiving stock into Bulk or Forward, Replenishing Forward from Bulk.

Action Types are then allocated movement types, which indicate the actual movement performed by the action type.

Purpose This panel allows you to:

- Add a new Action Type
- Maintain an existing Action Type
- Delete an existing Action Type
- Display an existing Action Type
- Device Rules Maintenance

Explanation

Action Types are retrieved from TMSWH/RULE-XXX (Depending on the type of movement) by matching warehouse and device type. If device type not explicitly defined then retrieves using generic device type.

Action types are defined in TMSWH/VO-CTPAK. This is a System defined Control File containing the valid Action Movement Types and their descriptions. Note: Only the descriptions may be changed.

A=ALL AVAIL THAT WILL FIT IN PICK LOC (Only in movement out)

'A' can be used in the 'from action movement type' for replenishment. Once a stock item has been selected, the system determines the quantity of how many full cartons will fit into the pick location (determined by the putaway logic). It then chooses the maximum of this value versus the actual value required (rounded up to the nearest full carton).

The purpose of this facility is to reduce replenishment transactions by moving all that is possible to move when replenishment is required.

Order replenishments can use Action Types with movement out types of **A** (All that will fit). This means that when order replenishment is created the stock to be moved is the higher quantity of the capacity of the forward location and the amount required for orders.

This option can be used in action types for both reactive and proactive replenishments.

Example:

Act type	Seq	From zone	Move	To zone	Mov type
----------	-----	-----------	------	---------	----------

			Type		
PK1	10	BB Bulk Zone	A	FF Forward Zone	I
PK1	20	FF Forward Zone	I	D Dispatch Zone	I

1000 units exist in cartons of 20 in a BB zone location, and 70 will fit in each FF zone location.

If 15 units are required for orders, then the system will move 60 (3 cartons x 20).

If 125 are required for orders, then the system will move 140 (3 x 20, 3 x 20, 1 x 20) into 3 FF locations. **Note: TMSWH/PUT-FULL** dictates a locations maximum available space.

C=ALL MVMNTS - PICKS RND UP TO CTNQ (By Total Replenishment)

'C' all movements if less than full carton being moved, then round up to nearest carton quantity and select.

'C' can be used in either the 'from' or 'to action movement type'. By using this option the movement will be performed while maintaining the existing carton quantity on the stock record. If the 'C' is in the 'from action movement type', then the system will round dup the required quantity to the next highest full carton quantity.

It is not valid to use 'C' in the 'from action movement type' when the 'to zone' is the system defined dispatch zone as this could lead to an oversupply of the order.

This option can be used in any other action types.

Example:

Act type	Seq	From zone	Move Type	To zone	Mov type
PK1	10	BB Bulk Zone	C	FF Forward Zone	C
PK1	20	FF Forward Zone	I	D Dispatch Zone	I

1000 units exist in cartons of 20 in a BB zone location.

If 125 are required for orders, then the system will move 140 (7 cartons x 20) into the FF zone keeping the carton quantity of 20 in FF. The picking request will pick 125 leaving 15 singles behind in the FF zone.

D=ALL MVMNTS - PICKS RND DOWN TO CTNQ

'D' all movements if less than full carton being moved, then round down to nearest carton quantity and select.

'D' can be used in either the 'from' or 'to' action movement type. By using this option the movement will be performed while maintaining the existing carton quantity on the stock record. If the 'D' is in the 'from' action movement type, then the system will round down the required quantity to the next lowest full carton quantity. This option is primarily used for picking full carton orders from Bulk.

It is valid to use 'D' in the 'from' action movement type when the 'to zone' is the system defined dispatch zone but this may lead to an under supply of the order unless a subsequent action type is used. As per 'PK2' in the example below.

This option can be used in all action types.

Example:

Act type	Seq	From zone	Move Type	To zone	Mov type
PK1	10	BB Bulk Zone	D	FF Forward Zone	D
PK2	10	FF Forward Zone	I	D Dispatch Zone	I

1000 units exist in cartons of 20 in a BB zone location. 100 units exist as singles in a FF location.

If 125 are required for orders, then the system will pick 120 (6 cartons x 20) from the BB zone and 5 singles from the FF zone.

Note: In this case 2 action types have been defined. They must be defined in **TMSWH/RULE-PCK** as PK1 followed by PK2.

F=PICK FULL CTNS, SPLT AS LAST RESORT

'F' can be used only in the 'from action movement type'. By using this option the movement will be performed while maintaining the existing carton quantity on the stock record. An 'F' will process in the same way as for 'D' (that is, will round down to the nearest carton quantity). However, it differs from 'D' when the order cannot be fulfilled because there is not enough stock in small enough carton quantities. For example, an order for 4 but the stock resides in carton quantities of 6 only. In this example, a movement type 'D' would short pick the order, but a movement type 'F' would break down one carton so that the order can be fulfilled.

It is only valid to use 'F' in the 'from' action movement type when the 'to zone' is the system defined dispatch zone.

Example:

Act type	Seq	From zone	Move Type	To zone	Mov type
PK1	10	BB Bulk Zone	F	FF Forward Zone	D

1000 units exist in cartons of 20 in a BB zone location.

If 125 are required for orders, then the system will pick 125 (6 cartons x 20 + 5 singles) from the BB zone, leaving 860 units in cartons of 20 and 15 singles in the BB Zone.

I=ISBN MOVEMENT - CTNS MAY BE SPLIT

'I' can be used in either the 'from' or 'to' action movement type. By using this option the movement will be performed while breaking down the existing carton quantity on the stock record to 1.

This option can be used in any action types and is almost always used for picking transactions.

Example:

Act type	Seq	From zone	Move Type	To zone	Mov type
PK1	10	BB Bulk Zone	C	FF Forward Zone	C
PK1	20	FF Forward Zone	I	D Dispatch Zone	I

1000 units exist in cartons of 20 in a Bulk zone location.

If 125 are required for orders, then the system will move 140 ((7 cartons x 20) i.e. 125 rounded up to next highest full carton), into the Forward zone keeping the carton quantity of 20 in Forward. The picking request will pick 125 leaving 15 singles behind in the Forward zone.

O=REPLENISH FULL CARTONS PER ORDER (by order)

'O' can be used only in the 'from' action movement type of a reactive replenishment action type only. By using this option the movement will be performed for all orders which can be partially or completely supplied without splitting the cartons from their existing carton

Act type	Seq	From zone	Move Type	To zone	Mov type
PK1	10	BB Bulk Zone	C	P Pallet station	P
PK1	20	P Pallet station	P	FF Forward Zone	C
PK1	30	FF Forward Zone	I	D Dispatch Zone	I

ntity. The cartons are 'hard allocated' to specific picking slips so that they can be picked via a different path than the split cartons.

For best results when using type 'O', it is recommended that the movement type of 'S' is also used as in the example below.

Example:

Act type	Seq	Prev	From zone	Move Type	To zone	Mov type
RPB	10		B Bulk	O	X X-Dock	D
RPB	15		B Bulk	C	F Forward	I
RPB	20	10	X X-dock	D	D Dispatch Zone	I
RPB	25	15	F Forward	S	D Dispatch Zone	I

1000 units exist in cartons of 20 in a Bulk zone location.

If two orders, one for 75 and one for 50 exist, then the system will move 100 ((5 cartons x 20) i.e. 75 rounded down to 60 and 50 rounded down to 40), into the X zone keeping the carton quantity of 20 in X leaving 25 (15 + 10) to replenish. The RPB 15 request will move 20 ((2 cartons of 20, i.e. 25 rounded up) into the Forward zone. The first picking slip will pick 3 cartons from X and 15 singles from Forward, while the second order will pick 2 cartons from X and 10 singles from Forward.

P=PALLET MOVEMENT ONLY

Type '**P**' Pallet Movement only - means that the movement is always done by a pallet into a location, or out of a location.

'**P**' can be used in either the 'from' or 'to' action movement type. By using this option the movement will be performed while maintaining the existing carton quantity on the stock record. If the '**P**' is in the 'from' action movement type and it is the only title in that location, then the system will pick all of the stock in the container or location.

'**P**' is used for temporary or pallet movement only locations where entire pallets are used to move stock. In RF processing the stock movement screen requires the pallet numbers as the identifier for the movement.

A '**P**' movement out type in a paper environment can move the full location quantity.

Note: Movement out type '**P**' should be used for replenishments only and should not be used for picking (where the To Zone is the dispatch Zone) as this will result in oversupplying the order.

The '**P**' movement out type rounds the replenishment quantity up to the pallet location (similar in function to carton replenishment type of '**C**')

In the WHR280 Replenishment list, indicate pallet movement if the request quantity is the whole stock in the location. But it may not be pallet movement any more when it is actually picked so the picker should check the location stock matched with the request.

Example:

Act type	Seq	From zone	Move Type	To zone	Mov type
PK1	10	BB Bulk Zone	C	P Pallet station	P
PK1	20	P Pallet station	P	FF Forward Zone	C
PK1	30	FF Forward	I	D Dispatch Zone	I

		Zone			
--	--	------	--	--	--

The reason for having the three action type steps is that three physical devices move the stock. An Order picker may pick from bulk and put the pallet into Pallet zone. A pallet jack may pick up the pallet from the Pallet zone and put the stock away into the forward location. A pick trolley may pick the actual order out of the Forward zone.

PK1 10 will instruct the Operator to perform multiple picks potentially from multi location, but will require just one putaway where the pallet/container only, is required.

PK1 20 will require just one pick (nominating the pallet/container), but potentially, multiple putaways based on number of different putaway locations.

Q=ALL MVMNTS -PICK RND DWN TO PALLET

'Q' = All movements-picks round down to pallet" is also required. This is necessary to satisfy the requirement of pallet picks out of a bulk zone. This is the same as D but bigger.

'Q' can be use din either the 'from' or 'to' action movement type. By using this option the movement will be performed while maintaining the existing carton quantity on the stock record. If the 'Q' is in the 'from' action movement type, then the system will round down the required quantity to the next lowest full pallet or location quantity. This option is primarily used for picking full pallet orders from Bulk.

It is valid to use 'Q' in the 'from' movement type when the 'to' zone is the system defined dispatch zone but this may lead to an undersupply of the order unless subsequent action type is used.

This option can only be used in reactive replenishment action types.

Example:

Act type	Seq	From zone	Move Type	To zone	Mov type
PK1	10	BB Bulk Zone	Q	D Dispatch Zone	D
PK2	10	FF Forward Zone	I	D Dispatch Zone	I

5000 units exist in 5 x 1000 unit pallets in a Bulk zone location. 500 units exist as singles in Forward. If 1125 are required for orders, then the system will pick one pallet from the Bulk zone and 125 singles from the Forward zone.

S=SPLIT PICKS-PICK UP TO CTN QTY ONLY

'S' = Split picks-pick up to carton qty" is also required. This is necessary to complement the "O" type described above.

'S' can only be use din the 'from' action movement type where the 'to zone' is the dispatch zone, and should also be used in conjunction with type 'O'. By using this option the movement will be performed as if the type is 'I' until the pick for each picking slip reaches the smallest stored carton quantity that exists for this product in the warehouse (excluding ctng=1).

The picking slip will not allocate above this carton quantity because it would make sense to pick the stock directly from a bulk location in a full carton quantity. Only when all other stock is exhausted, will the stock be picked from the pick location over and above the carton quantity.

This facility allows for better allocation of stock when performing bulk picking for orders, thus the reason for using types 'O' and 'S' to complement each other.

This option can be used for reactive replenishments only.

Example:

Act type	Seq	Prev	From zone	Move Type	To zone	Mov type
RPB	10		B Bulk	O	X X-Dock	D
RPB	15		B Bulk	C	F Forward	I
RPB	20	10	X X-dock	D	D Dispatch Zone	I
RPB	25	15	F Forward	S	D Dispatch Zone	I

1000 units exist in cartons of 20 in a Bulk zone location. 1000 units exist as singles in a Forward location.

If 125 are required for orders, then the system will pick 120 (6 cartons x 20) from the Bulk zone and 5 singles from the Forward zone. (If an 'I' type was used instead of the 'S' then all the stock would have been picked from the Forward zone as singles).

W=RND UP AND PUTAWAY TO MULTIPLE LOCS

W' That is moving 60 units in cartons of 20, then put the three wraps into three different location.

'W' can only be used in the 'from' action movement type of a replenishment movement type only.

It functions as per a 'C' but rather than creating a single transaction for the entire quantity it creates a separate transaction per carton. Where 'C' forces the putaway into a single location, 'W' allows each carton to be putaway independently, possibly into separate locations.

Z=RND DOWN THEN ONE LINE PER CARTON

As per 'D', this Action Movement Type rounds down to the nearest whole carton quantity.

Type = 'Z' When picking 60 units in cartons of 20, then split the three wraps/cartons into three picking transactions (so that later each can be assigned a unique carton ID).

'Z' should be used in the 'from' action movement type of a picking type only. It is the picking equivalent of a 'W', ie. it creates a separate transaction per carton.

This was created so that separate picking instructions (with unique carton IDs) could be sent to a third-party PTL system.

Examples

This section illustrates examples concerning:

[Example 1: Addition of a new Action Type.](#)

[Example 2: Maintenance of an existing Action Type.](#)

[Example 3: Deletion of an existing Action Type.](#)

[Example 4: Display an existing Action Type.](#)

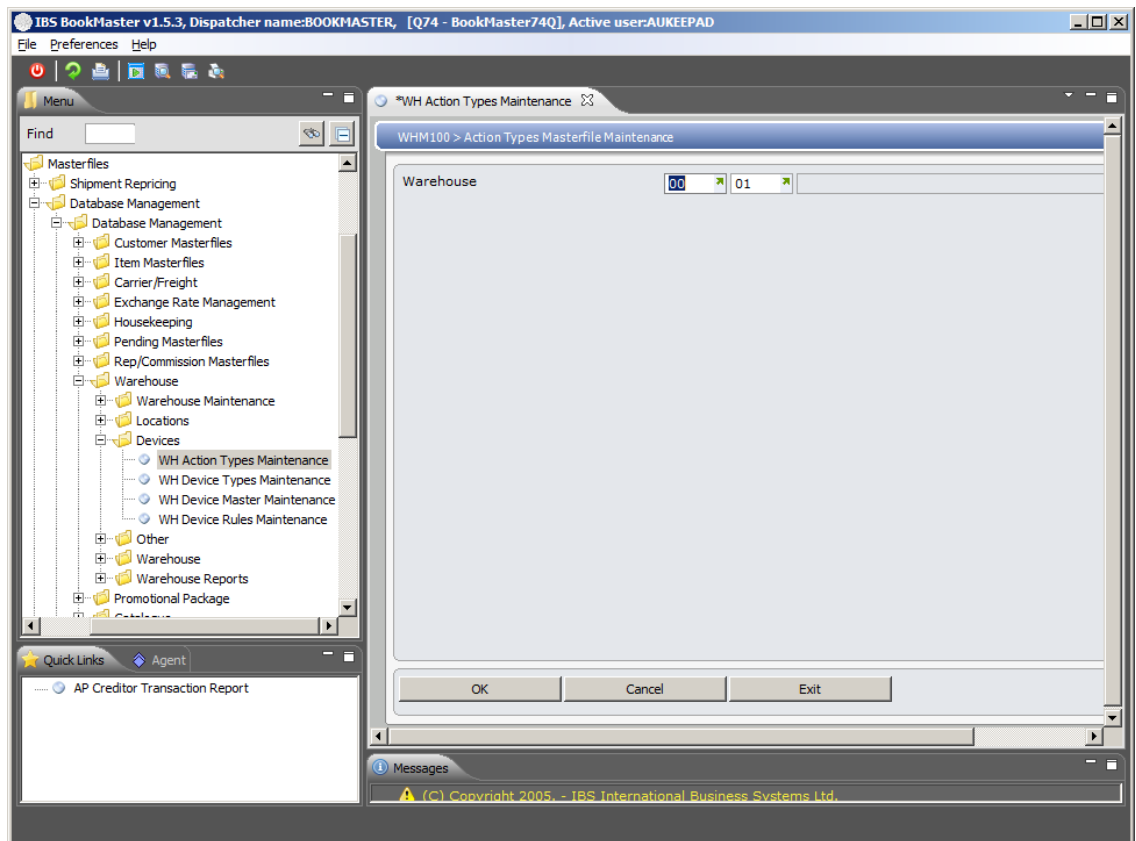
[Example 5: Maintenance of a Device Rule.](#)

Example 1: Addition of a new Action Type

This example describes how to add a new Action Type

1. Select option **WH Action Types Maintenance** from Base Modules>Distribution>Masterfiles>Database Management>Database Management>Warehouse>Devices menu.

WHM100 Action Types Masterfile Maintenance selection panel is displayed.



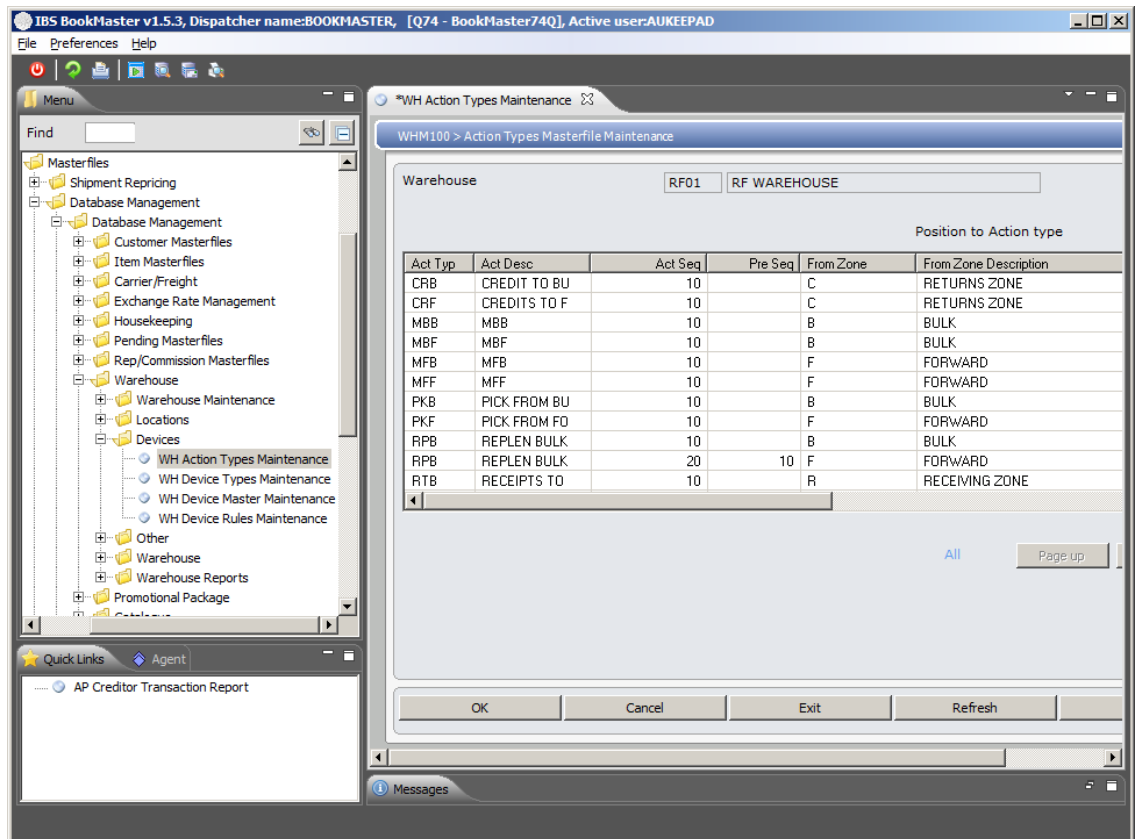
Relevant Fields

Warehouse

The warehouse to which this Action Type is to apply.

2. Select a Warehouse and click **OK**.

WHM100 Action Types Masterfile Maintenance main panel is displayed



Options

Maintain

Access Action Types Masterfile Maintenance in Change mode to make necessary changes in existing Action Type.

Delete

Access Action Types Masterfile Maintenance in Delete mode to delete the selected Action Type.

Display

Access Action Types Masterfile Maintenance in Display mode to display the selected Action Type.

Rule

Access WHM140 Device Rules Masterfile Maintenance main panel to add new device rules.

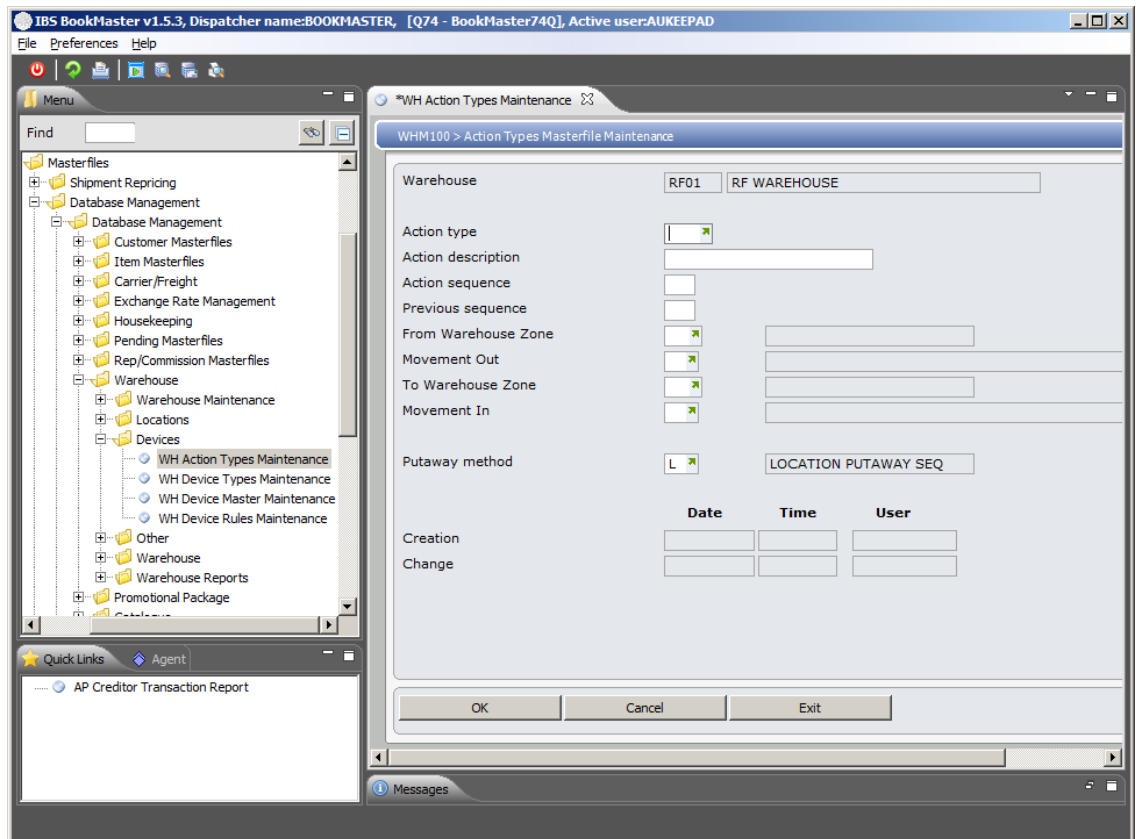
Functions

Add

Access Action Types Masterfile Maintenance in Add mode to add a new Action Type.

3. Click **Add**.

WHM100 Action Types Masterfile Maintenance panel is displayed in Add mode.



Relevant Fields

Action Type

This is an entire movement of stock or full stock movement in the warehouse, generated by the system. Define Device Rules applicable to a specific Movement Type. For example: for moving stock from bulk locations to pick locations. If the selection is by Action Type the system displays a list of Device Types. This same code is used to create all the steps or stages of a stock movement.

Action description

This describes the Action Type.

Action sequence

This is used to allocate the action a sequence, so that when the action type is used in conjunction with other action types they occur in sequential order. For example: PAP has a sequence of 1 and another PAP code with a sequence of 2, to complete all transactions. For example PKB has two sequences 10 and 20 needed to complete all transactions. One PKB code is created for sequence 10 and another PKB code is created for 20.

Previous sequence

The previous sequence controls the path within a particular action type, crucial in allowing full/partial carton splits within the one action type. The Previous action sequence must be less than the Action sequence.

From warehouse zone

Enter the zone where movements are to start.

Note: Dispatch, Receiving and Returns are from TMSWH/ZONE-RET, TMSWH/ZONE-DSP, and TMSWH/ZONE-RCV on which there are no search facilities. All other zones have a search facility.

Movement out	This is the type of movement required.
To warehouse zone	This is the zone the action type is to go to, for example from Bulk; stock must be moved into a Picking Location. Note: Dispatch Receiving and Returns are from the Control Files – TMSWH/ZONE-DSP, TMSWH/ZONE-RCV, TMSWH/ZONE-RET, on which there are no search facilities. All other zones have a search facility.
Movement in	This is the type of movement required to move stock into the specified location. For example, the condition of this move into a Picking Location is that the cartons from Bulk can be split.
Putaway method	This system defined code determines how the stock is put away in an RF warehouse. The choices are L for LOCATION PUTAWAY SEQ and U for USER SELECTED TITLE. This field should be L for RF.

4. Key in required fields and click **OK**.

A new Action type is added for the selected warehouse.

Example 2: Maintenance of an existing Action Type

This example describes how to maintain an existing Action Type.

1. Repeat steps **1** and **2** of [Example 1: Addition of a new Action Type](#).
2. Select an existing Action Type and click option **Change**.

WHM100 Action Types Masterfile Maintenance panel is displayed in Change mode.

3. Click **OK** to confirm change. This changes the existing Action Type.

Example 3: Deletion of an existing Action Type

This example describes how to delete an existing Action Type.

1. Repeat steps **1** and **2** of [Example 1: Addition of a new Action Type](#).
2. Select an existing Action Type and click option **Delete**.

WHM100 Action Types Masterfile Maintenance panel is displayed in Delete mode.

3. Click **OK** to confirm Deletion. This deletes the selected Action Type.

Example 4: Display an existing Action Type

This example describes how to display an existing Action Type.

1. Repeat steps **1** and **2** of [Example 1: Addition of a new Action Type](#).
2. Select an existing Action Type and click option **Display**.

WHM100 Action Types Masterfile Maintenance panel is displayed in Inquiry mode to display selected action type details.

Example 5: Maintenance of a Device Rule

This example describes how to maintain Device Rule for an action type.

1. Repeat steps **1** and **2** of [Example 1: Addition of a new Action Type](#).
2. Select an existing Action Type and click option **Rule**.

WHM140 Device Rules Masterfile Maintenance panel to maintain device rule for the selected action type is displayed.