

---

# WHM099 Floor Spot Code Maintenance

---

## Overview

Destination Codes functionality is typically used for sorting cartons into staging areas prior to dispatch. Floor Spot Consolidation takes this one step further allowing orders to be categorized such that the shipping cartons are tagged with a user-defined 'floor spot' for physical relocation/consolidation prior to dispatch. One use of this functionality is the pre-picking and staging of orders in advance of scheduled dispatch date with a view to smoothing warehouse activity.

An order can be assigned a Floor Spot for the purposes of order consolidation prior to dispatch.

This process creates various definitions for Floor Spots on the warehouse floor to where 'dispatched' cartons can be sent after going through a dispatch lane routing.

A Floor Spot is printed on the dispatch label so that when the order is routed to the specific lane the label can be used to determine which Floor Spot the carton is to go to.

## Purpose

This panel allows you to:

- Add a new Floor Spot Code
- Maintain existing Floor Spot Code
- Delete existing Floor Spot Code

---

## Examples

This section illustrates examples concerning:

[Example 1: Addition of a new Floor Spot Code.](#)

[Example 2: Maintenance of an existing Floor Spot Code.](#)

[Example 3: Deletion of an existing Floor Spot Code.](#)

---

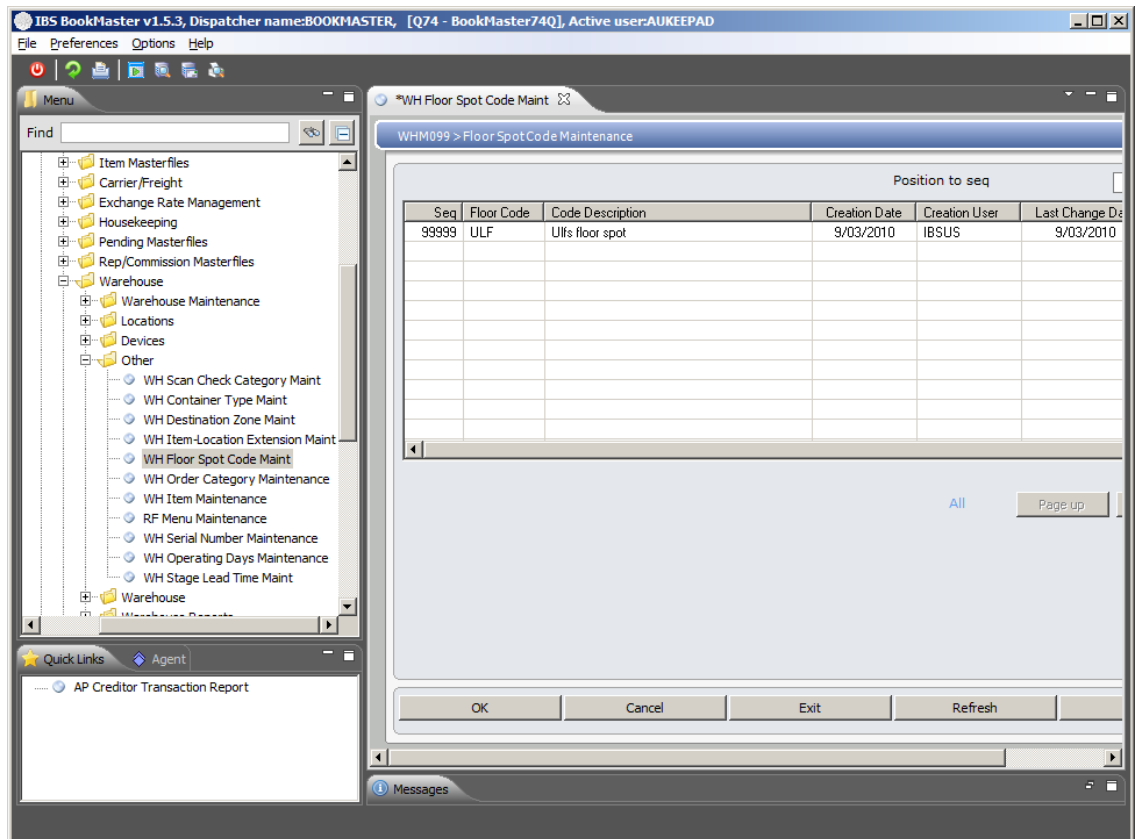
### Example 1: Addition of a new Floor Spot Code

The add option is used to create various definitions for Floor Spots on the warehouse floor to where 'dispatched' cartons can be sent after going through a dispatch lane routing.

This example describes how to add a new Floor Spot Code.

1. Select option **WH Floor Spot Code Maintenance** from Base Modules>Distribution>Masterfiles>Database Management>Database Management>Warehouse>Other menu.

**WHM099 Floor Spot Code Maintenance** main panel is displayed.



## Options

**Maintain**

Access Floor Spot Code Maintenance in Maintain mode to make necessary changes in existing Floor Spot Code.

**Delete**

Access Floor Spot Code Maintenance in Delete mode to delete selected Floor Spot Code.

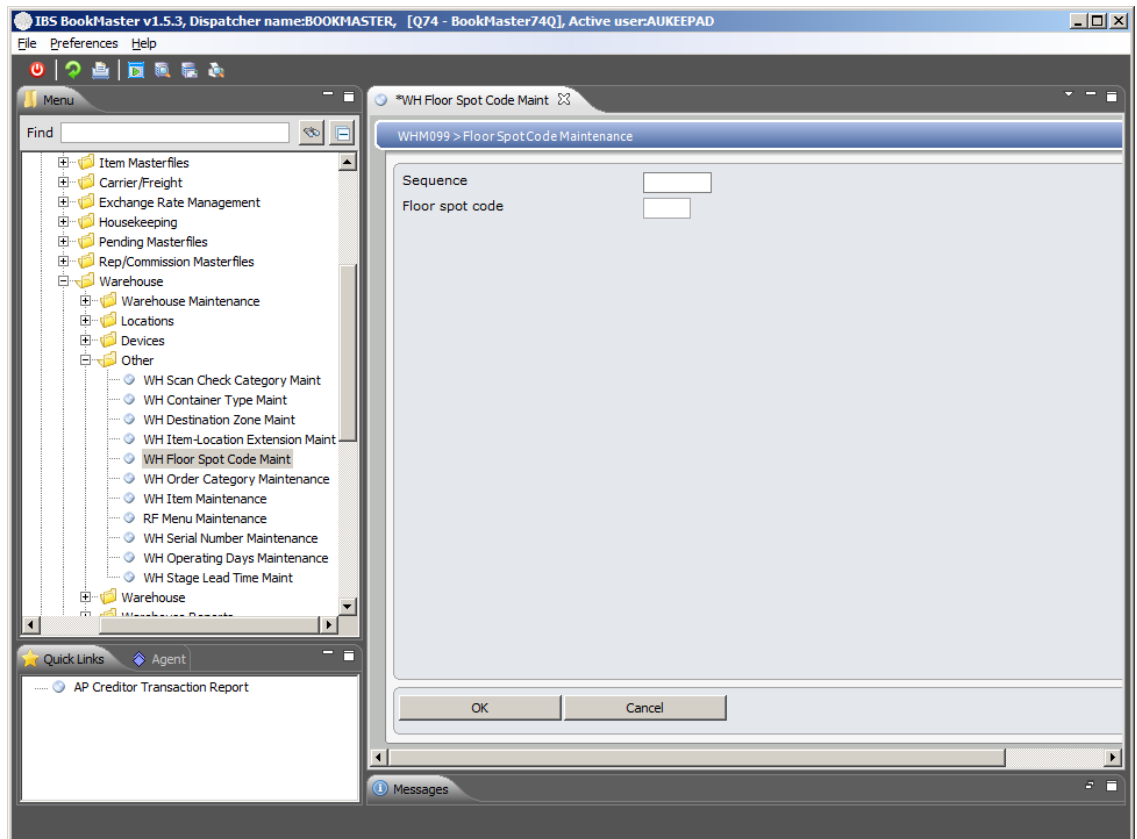
## Functions

**Add**

Access Floor Spot Code Maintenance in Add mode to add new Floor Spot Code.

2. To add a floor spot code click **Add**.

**WHM099 Floor Spot Code Maintenance** panel is displayed.



### R3 Relevant Fields

#### Sequence

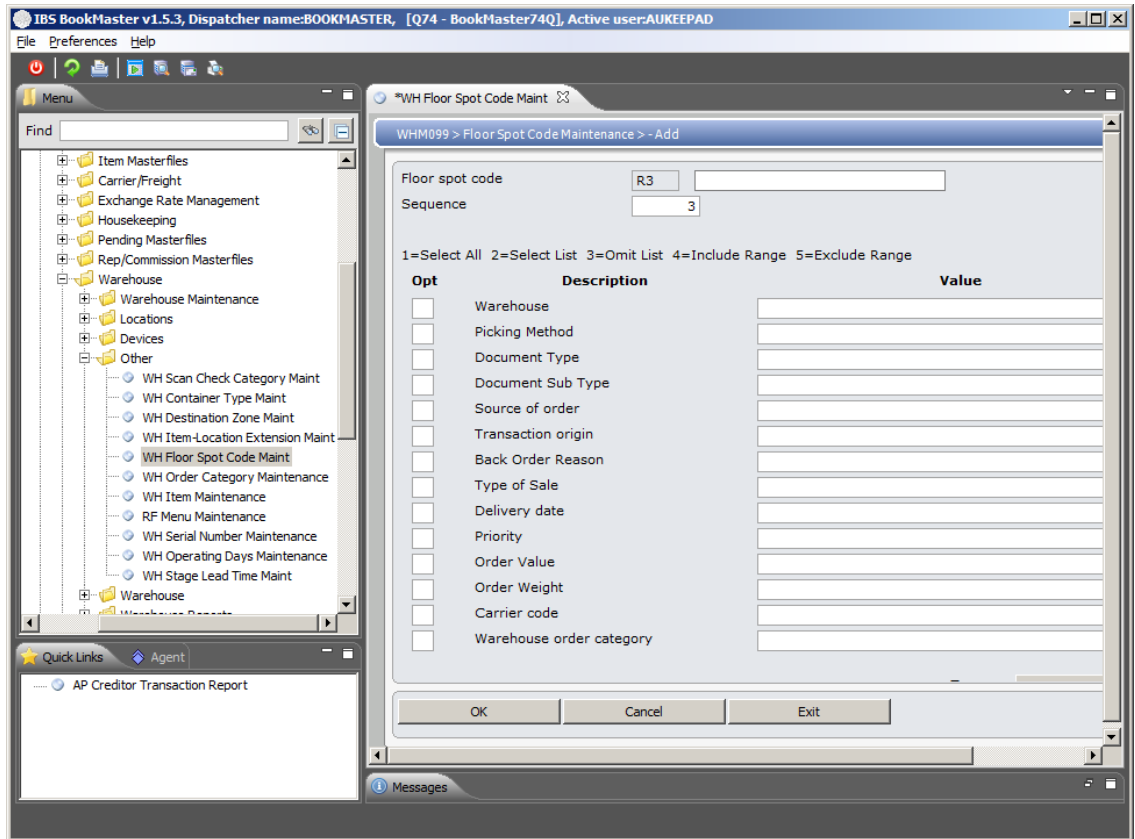
In Aisle Maintenance flag to allow adjustment on all fields or just pick the order. Defaults to 1=allow adjustment on all fields. Can be changed to 2=allows adjustment on pick order only.

#### Floor Spot Code

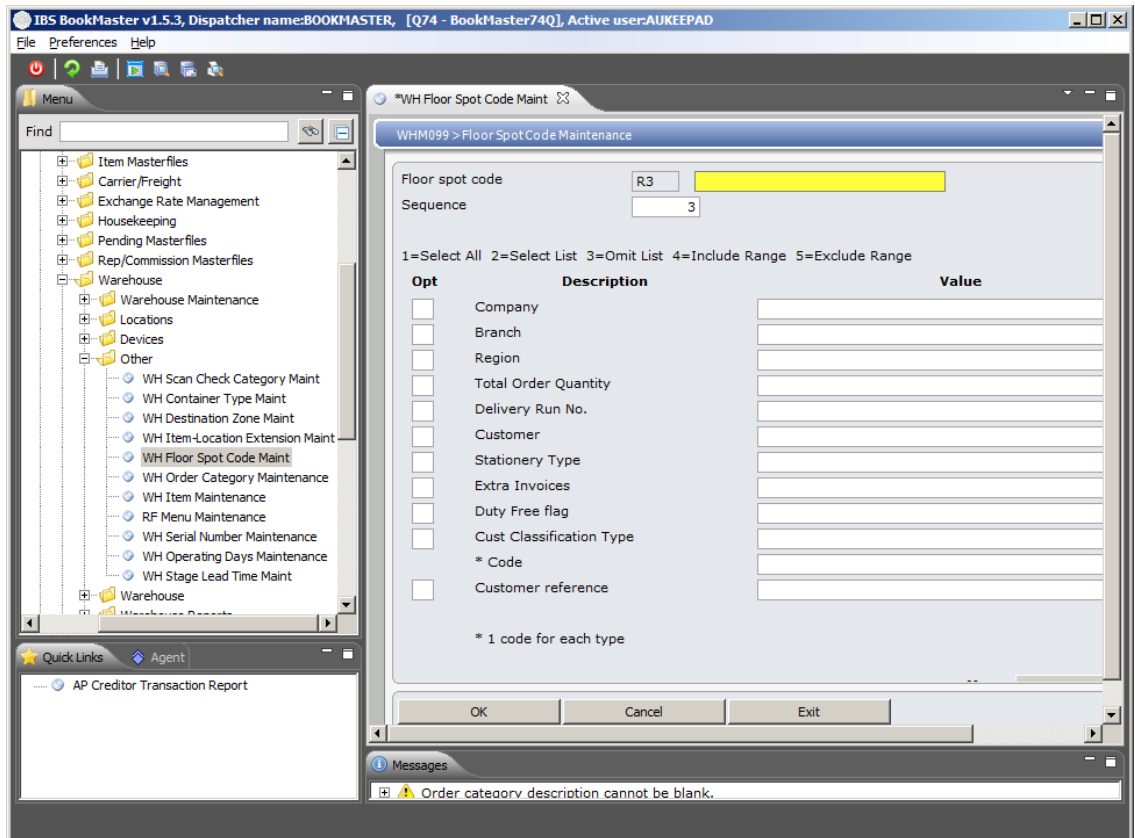
This is a code that is created and relates to how to sort cartons into staging areas prior to dispatch.

3. Enter a sequence and a floor spot code and click **OK**.

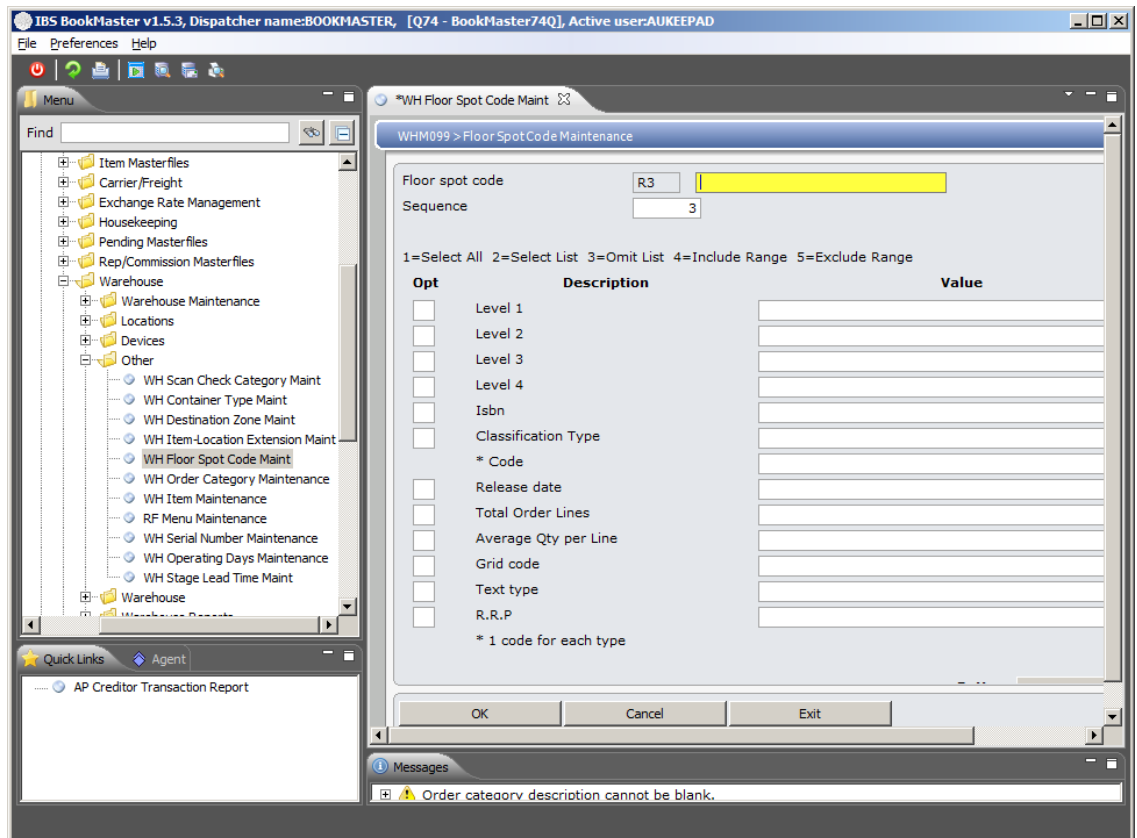
**WHM099 Floor Spot Code Maintenance** panel is displayed in add mode.



4. Page down.



5. Page down.



6. Key in the WH required fields and click **OK**. This adds new Floor Spot Code.

---

### Example 2: Maintenance of an existing Floor Spot Code

This example describes how to maintain existing floor spot code.

1. Repeat step 1 as in [Example 1: Addition of a new Floor Spot Code](#).
2. Select an existing code and click on **Maintain**.

**WHM099 Floor Spot Code Maintenance** appears in change mode which allows making changes in existing floor spot code.

3. Make necessary changes and click **OK**. This changes the existing floor spot code.

---

### Example 3: Deletion of an existing Floor Spot Code

This example describes how to delete existing floor spot code.

1. Repeat step 1 as in [Example 1: Addition of a new Floor Spot Code](#).
2. Select an existing code and click on **Delete**.

**WHM099 Floor Spot Code Maintenance** appears in delete mode which allows deleting selected floor spot code.

3. Click **OK** to confirm deletion. This deletes the selected floor spot code.