
WHM098 Destination Zone Maintenance

Overview This is the Dispatch Destination which can be used with the Pick to Light Colby system.

Purpose This panel allows you to:

- Add a new destination code
- Maintain existing destination code
- Delete existing destination code

Examples

This section illustrates examples concerning:

[Example 1: Addition of a new destination code](#)

[Example 2: Maintenance of an existing destination code](#)

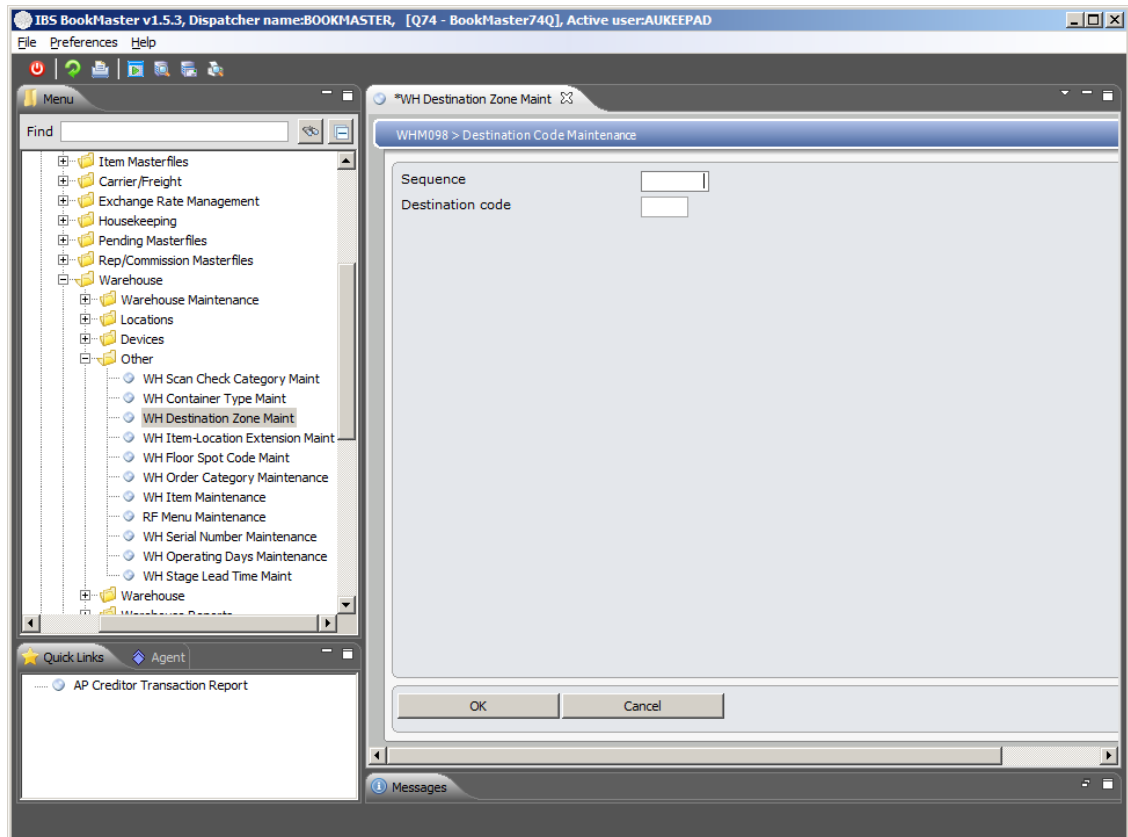
[Example 3: Deletion of an existing destination code](#)

Example 1: Addition of a new Destination Code

This example describes how to add a new destination code.

1. Select option **WH Destination Zone Maint** from the Base Modules>Distribution>Masterfiles>Database Management>Database Management>Warehouse>Other menu.

WHM098 Destination Code Maintenance main panel is displayed.



Relevant Fields

Sequence

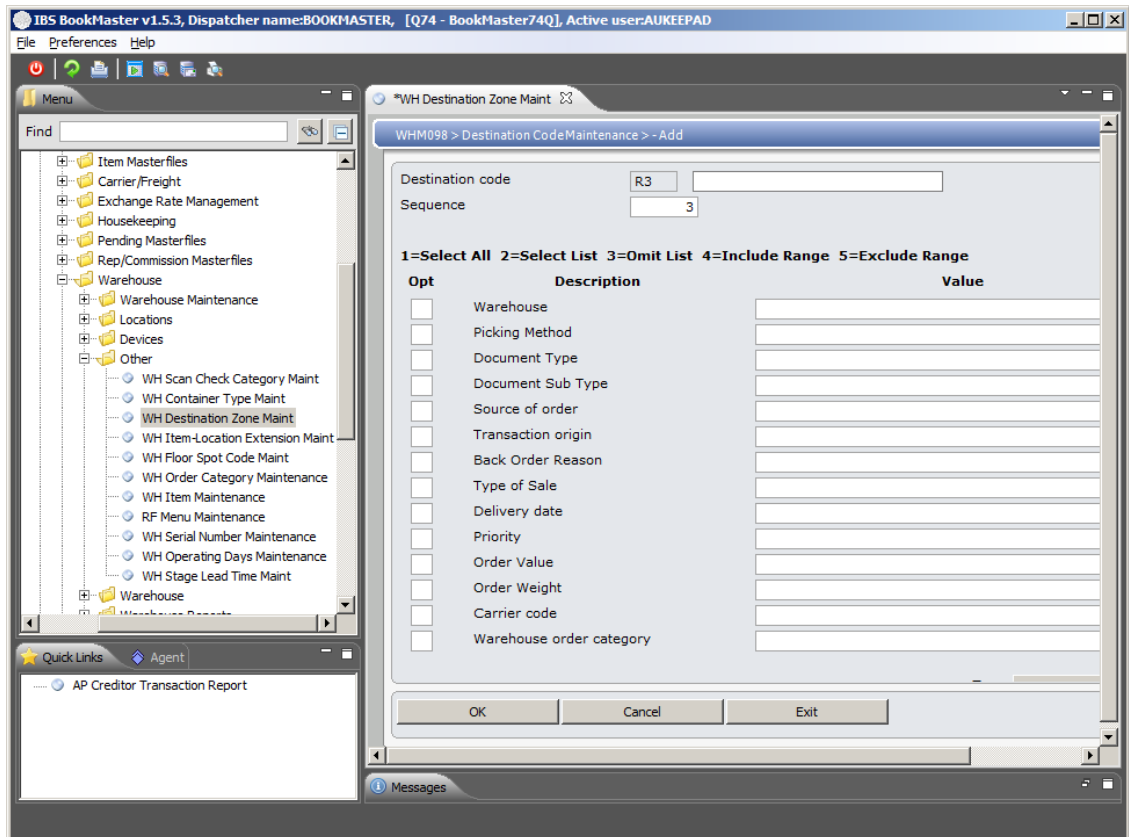
The sequence in which the destination code is to appear.

Destination code

Enter three character long user defined new destination code.

3. Key in the sequence and destination code and click **OK**.

WHM098 Destination Code Maintenance selection panel to create definition for the new destination zone is displayed.



Relevant Fields

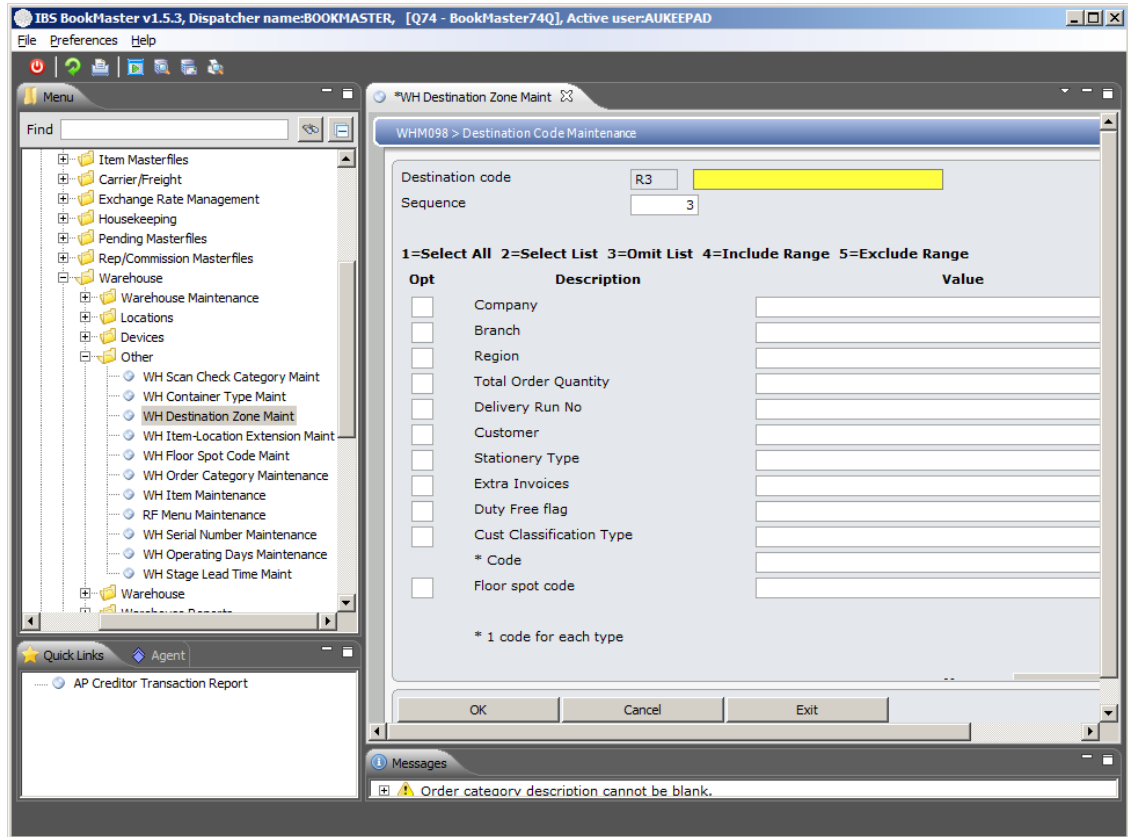
Destination Code Description

Entry of the Destination Code description is used to describe the Destination Code.

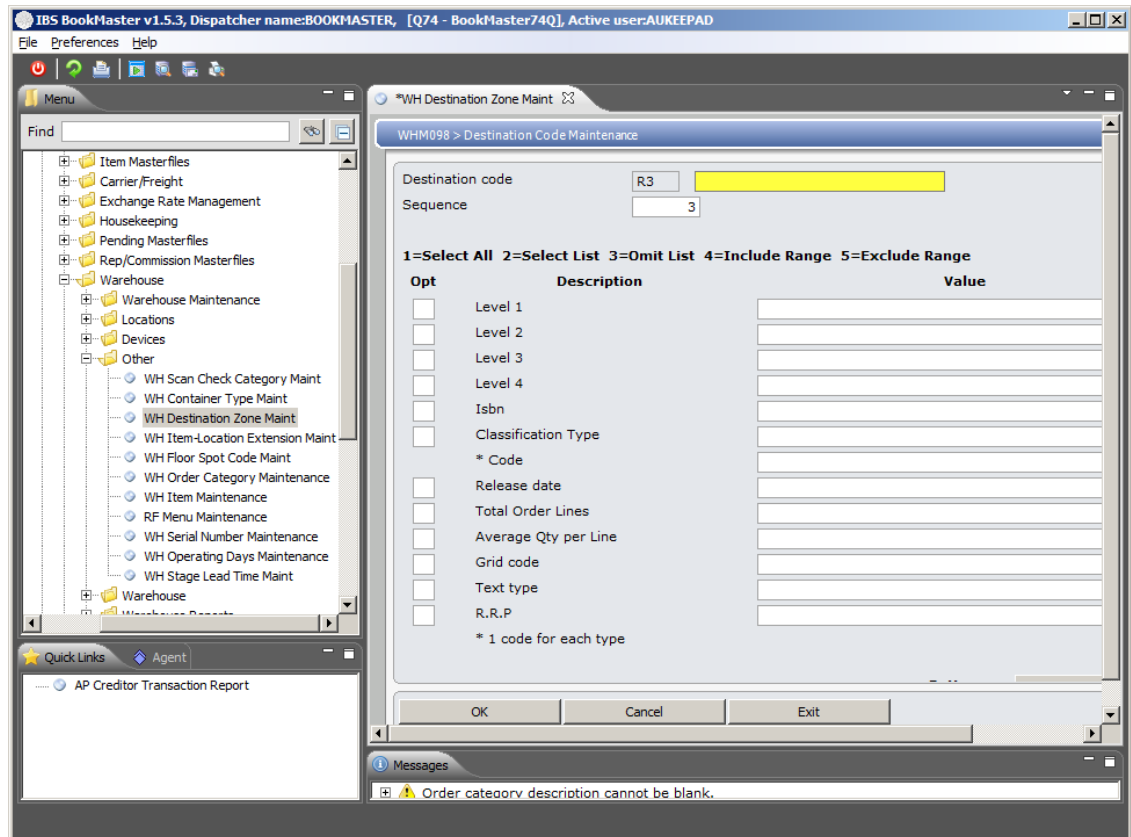
Sequence

Defaults from the previous screen but can be overridden.

4. Page Down.



5. Page Down.



6. Key in all the required fields and click **OK**.

New Destination Code is added.

Example 2: Maintain an existing Destination Code

This example describes how to maintain an existing Destination Code.

1. Repeat step 1 as in [Example 1: Addition of a new destination code](#)
2. Select an existing destination code and click option Maintain.

WHM098 Destination Code panel is displayed in **Change** mode.

3. Make required changes and click OK to confirm the changes. This changes the selected Destination Code.

Example 3: Delete an existing Destination Code

This example describes how to delete an existing Destination Code.

1. Repeat step 1 as in [Example 1: Addition of a new destination code](#)
2. Select an existing destination code and click option Delete.

WHM098 Destination Code panel is displayed in **Delete** mode.

3. Click OK to confirm the selection. This deletes the selected destination code.