

---

# WHM091 Scan Check Category Maintenance

---

## Overview

Deployed in conjunction with cubing and the material handling interface, orders can be categorized so that a percentage of the cartons are tagged for QA Scan Check, with the opportunity to take corrective action and generate a full credit and revised invoice if warranted. This identifies inaccuracies in the picking process and delivers improved customer service levels.

This definition determines which picking cartons are to be diverted at Quality Assurance (QA) for scan checking based on a combination of various customer and order criteria. The first or highest sequence of QA diversion classification that an order satisfies will be applied to all the cartons in that order.

## Purpose

This panel allows you to:

- Add a new scan check category
- Maintain an existing scan check category
- Delete an existing scan check category

---

## Explanation

A percentage sampling factor must be defined for each Diversion Category or QA classification, to determine what percentage of the diverted cartons are sampled. A sampling of 100% results in all cartons within the order being tagged for QA diversion. A sampling of 30% will tag 3 in 10 cartons for diversion.

These categories will be applied to orders as they are made available to pick.

This is applied to orders when they are made available to pick and when the final carton of an order is diverted back to invoicing, the orders become ready for dispatch.

---

## Examples

This section illustrates examples concerning:

[Example 1: Addition of a new scan check category](#)

[Example 2: Maintenance of an existing scan check category](#)

[Example 3: Deletion of an existing scan check Category](#)

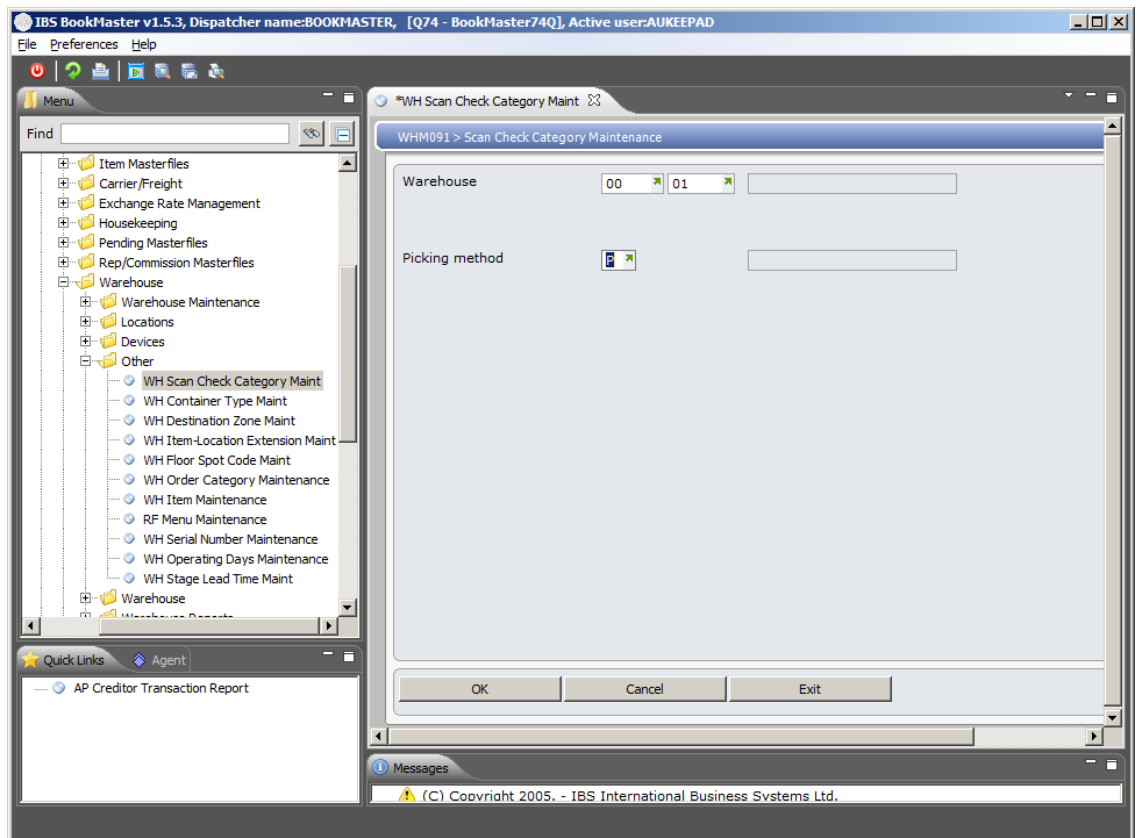
---

### Example 1: Addition of a new scan check category

This example describes how to add a new Scan Check or Carton Divert Category

1. Select option **WH Scan Check Category Maintenance** from Base Modules>Distribution>Masterfiles>Database Management>Database Management>Warehouse>Other menu.

**WHM091 Scan Check Category Maintenance** selection panel is displayed.



**Relevant Fields**

**Warehouse**

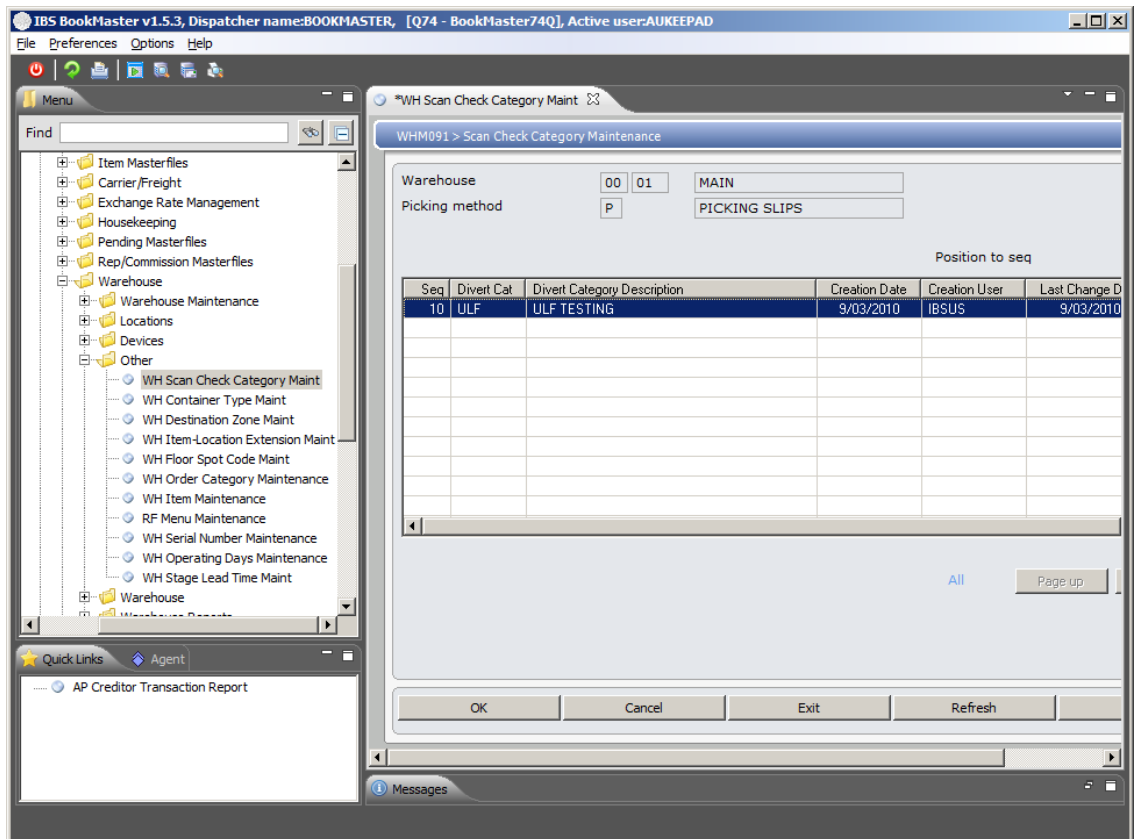
The warehouse to which this Scan Check or Carton Divert Category is to apply.

**Picking Method**

The Picking method to which this Scan Check or Carton Divert Category is to apply.

2. Select the Warehouse and Picking Method and click **OK**

**WHM091 Scan Check Category Maintenance** main panel is displayed



## Options

[Maintain](#)

Access Scan Check Category Maintenance in Maintain mode to make necessary changes in existing Category.

[Delete](#)

Access Scan Check Category Maintenance in Delete mode to delete the selected Category.

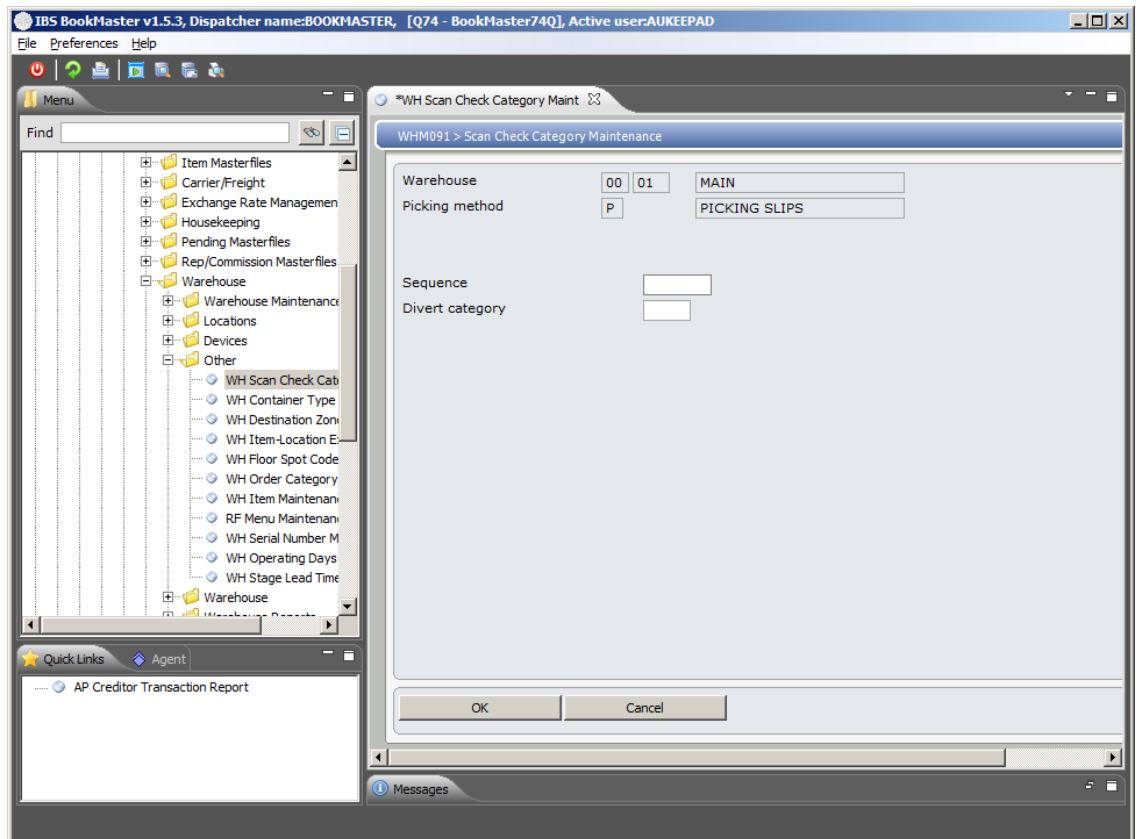
## Functions

[Add](#)

Access Scan Check Category Maintenance in Add mode to add a new Category.

3. Click **Add**.

**WHM091 Scan Check Category Maintenance** panel is displayed in **Add** mode.



## Relevant Fields

### Sequence

In Aisle Maintenance flag to allow adjustment on all fields or just pick the order. Defaults to 1=allow adjustment on all fields. Can be changed to 2=allows adjustment on pick order only.

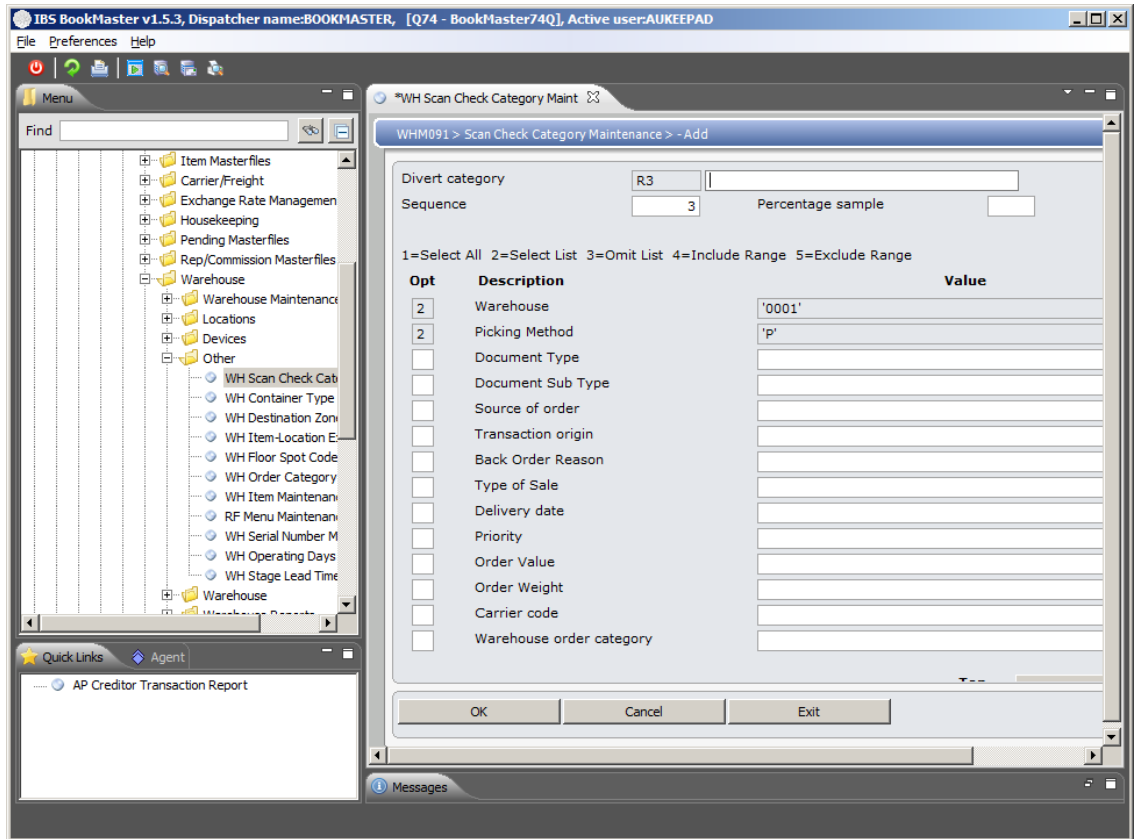
In other programs indicate in what sequence the system must apply this definition.

### Divert Category

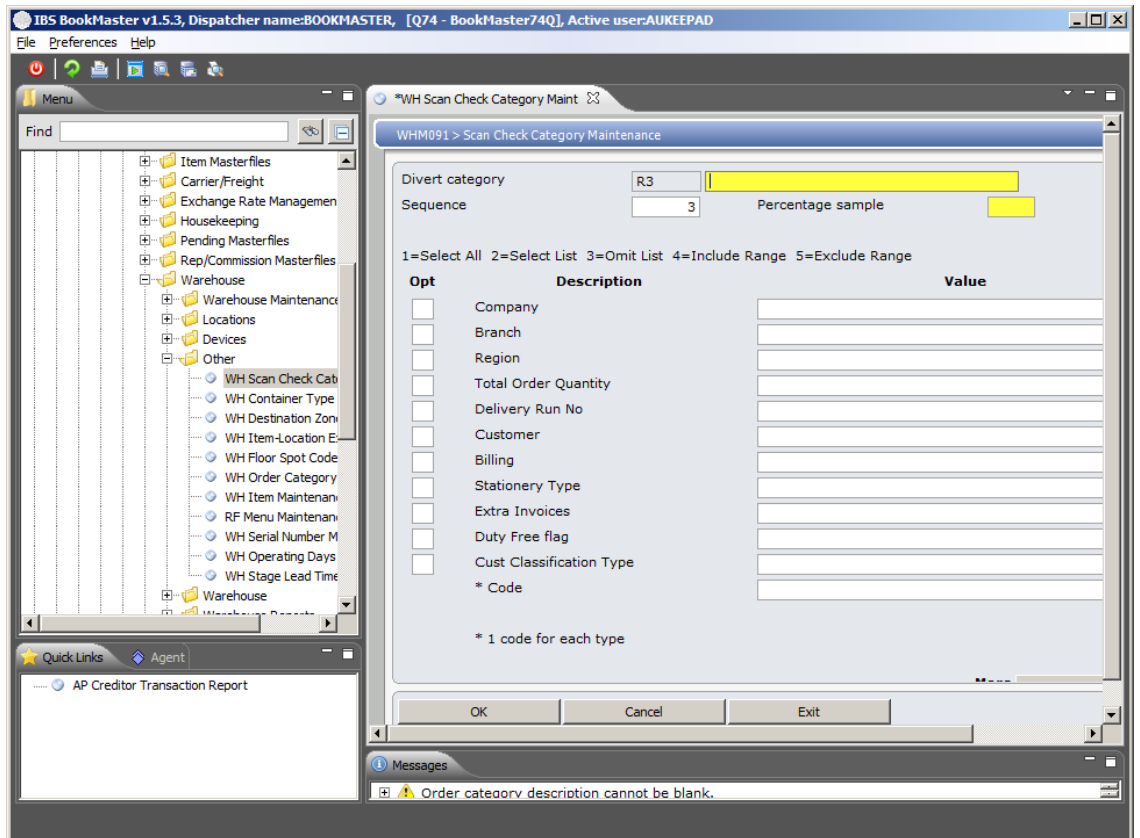
Allocate a code to the Divert Category being established.

4. Key in relevant fields and click **OK**.

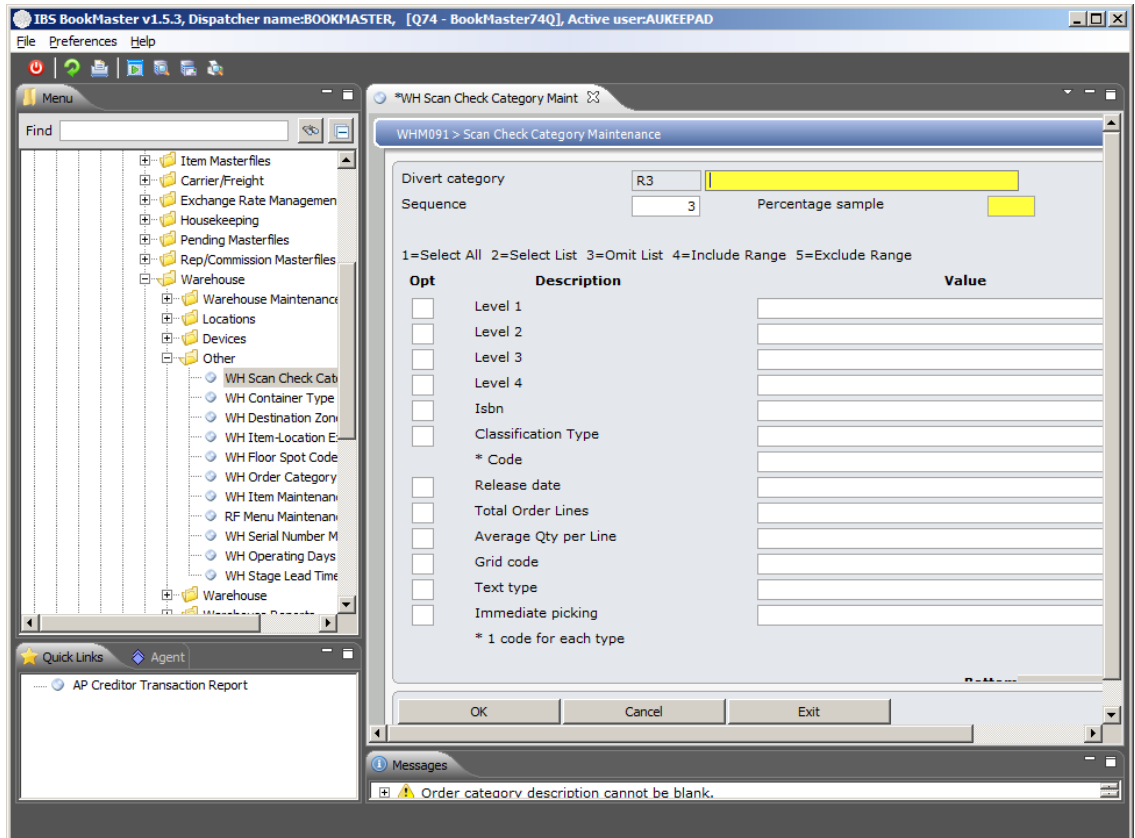
**WHM091 Scan check Category Maintenance** selection panel to create definition for the scan check category is displayed.



5. Page Down.



6. Page Down.



**Relevant Fields**

- Description** A description of the Divert Category is required.
- Percentage Sample** Indicate a sample percentage for the definition.

7. Make appropriate selections and click **OK**.

A new scan check category is added for the selected warehouse and picking method.

**Example 2: Maintenance of an existing scan check category**

This example describes how to maintain an existing scan check category.

1. Repeat steps 1 and 2 of [Example 1: Addition of an existing scan check category](#).
2. Select an existing scan check category and click option **Maintain**.

**WHM091 Scan Check Category Maintenance** panel is displayed in **Change** mode.

3. Click **OK** to confirm change. This changes the existing scan check category.

**Example 3: Deletion of an existing scan check category**

This example describes how to delete an existing scan check category.

1. Repeat steps 1 and 2 of [Example 1: Addition of an existing scan check category](#).

2. Select an existing scan check category and click option **Delete**.

**WHM091 Scan Check Category Maintenance** panel is displayed in **Delete** mode.

3. Click **OK** to confirm Deletion. This deletes the selected scan check category.