
WHM090 Order Category Maintenance

Overview The Order Category Maintenance program is designed to facilitate the warehouse operation by enabling all outstanding work to display on one screen, by order category. This facility could be used to group together orders of a type, for example Urgent orders, orders for a specific customer or location etc.

Order categories can be assigned a default device type.

Purpose This panel allows you to:

- Add a new Order Picking Category
- Maintain existing Order Picking Category
- Delete existing Order Picking Category

Examples

This section illustrates examples concerning:

[Example 1: Addition of a new Order Picking Category](#)

[Example 2: Maintenance of an existing Order Picking Category](#)

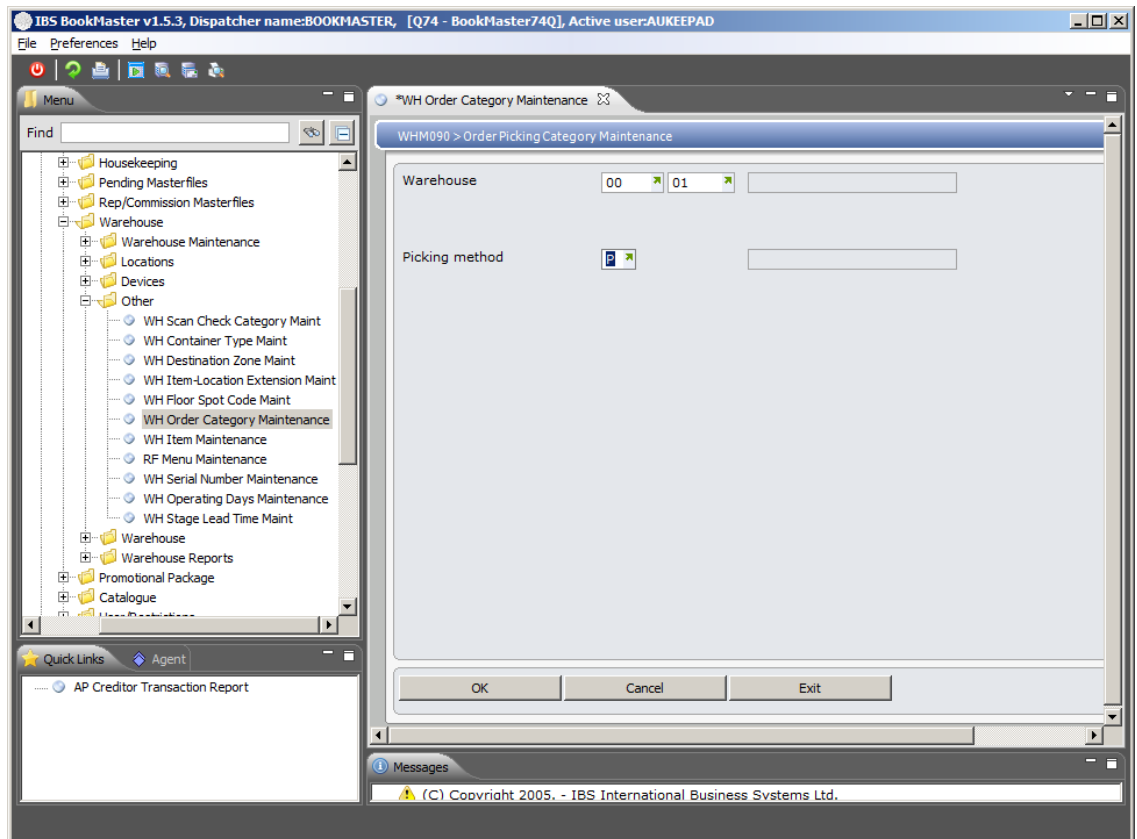
[Example 3: Deletion of an existing Order Picking Category](#)

Example 1: Addition of a new order Picking Category

This example describes how to add a new Order Picking Category.

1. Select option **Order Category Maintenance** from Base Modules>Distribution>Masterfiles>Database Management>Database Management>Warehouse>Other menu.

WHM090 Order Picking Category Maintenance selection panel is displayed.



Relevant Fields

Warehouse

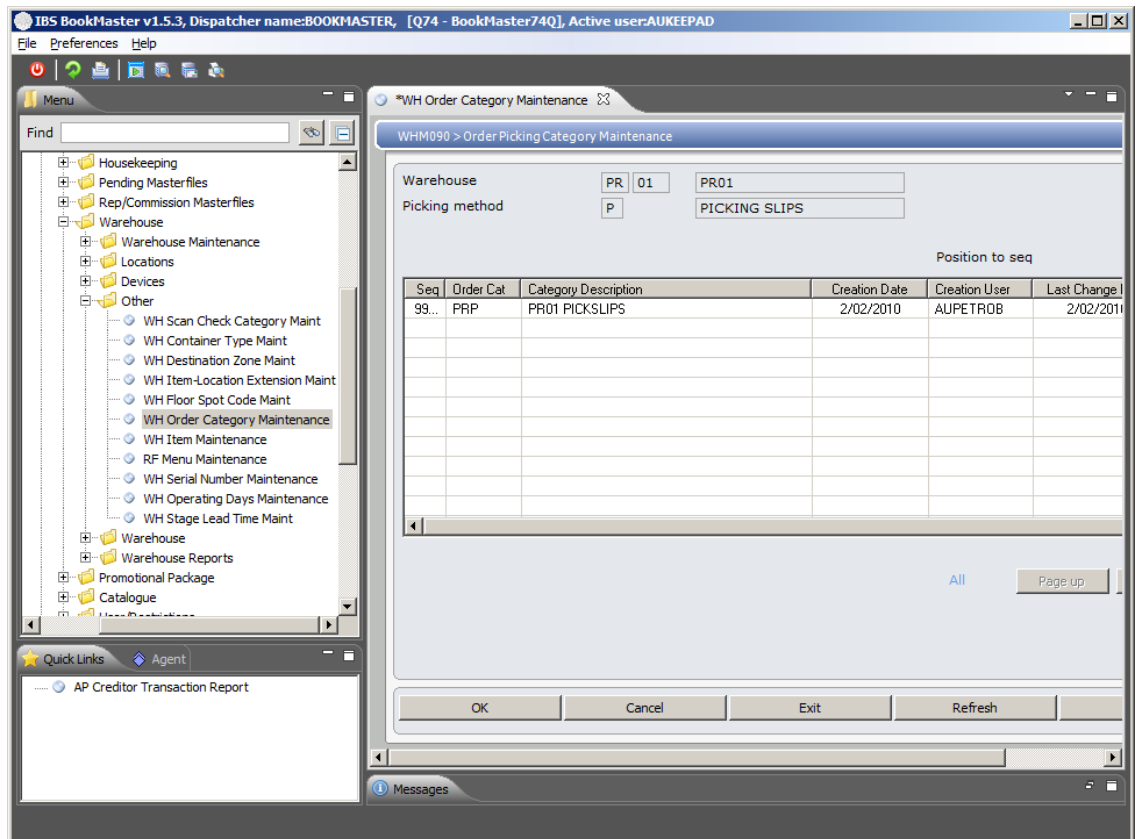
The warehouse for which you are adding a new order picking category.

Picking method

This is the type of document on which the goods are moving through the Warehouse. This field is hard coded to default to 'P', but can be changed.

2. Select a warehouse and order picking category and click **OK**.

WHM090 Order Picking Category Maintenance main panel is displayed.



Options

Maintain

Access Order Picking Category Maintenance in Maintain mode to make necessary changes in existing Order Picking Category.

Delete

Access Order Picking Category Maintenance in Delete mode to delete existing Order Picking Category.

Functions

Add

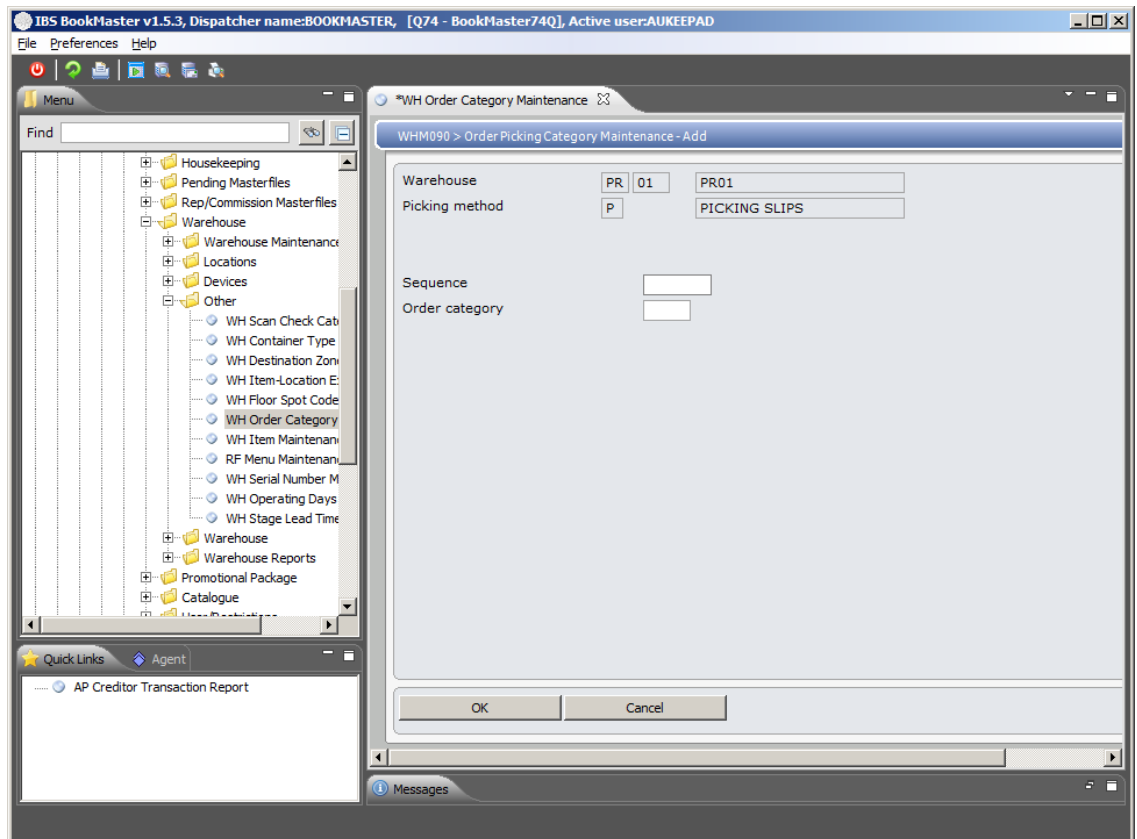
Access Order Picking Category Maintenance in Add mode to add new Order Picking Category.

3. To add a new Order Picking Category click **Add**.

The following screen prompts for Order Category and sequence. The sequence field is stored on the Order Category header file, and is used to control the order in which categories are decided in all warehouse operations.

The order in which categories are decided is determined when runs are created and they are sequenced with a priority number, the lower the number the higher the order of priority.

WHM090 Order Picking Category Maintenance main panel is displayed in add mode.



Relevant Fields

Sequence

In Aisle Maintenance flag to allow adjustment on all fields or just pick the order. Defaults to 1=allow adjustment on all fields. Can be changed to 2=allows adjustment on pick order only.

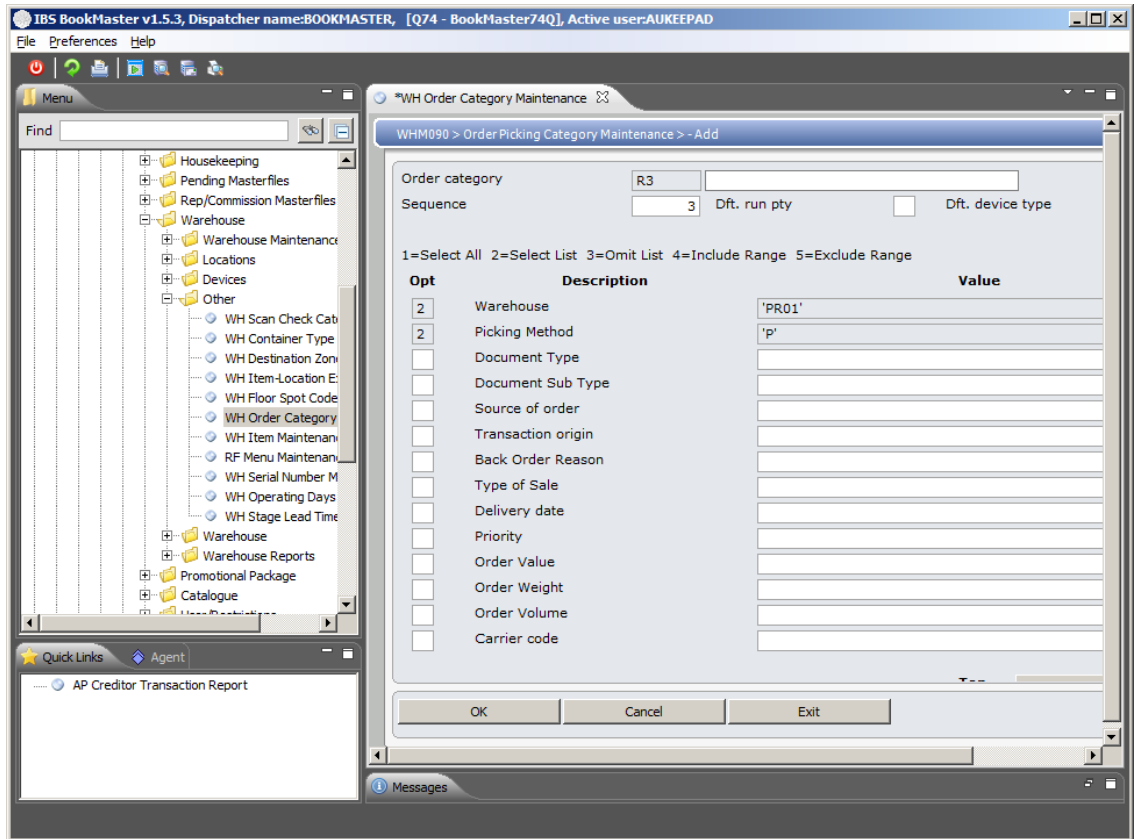
In other programs indicate in what sequence the system must apply this definition.

Order category

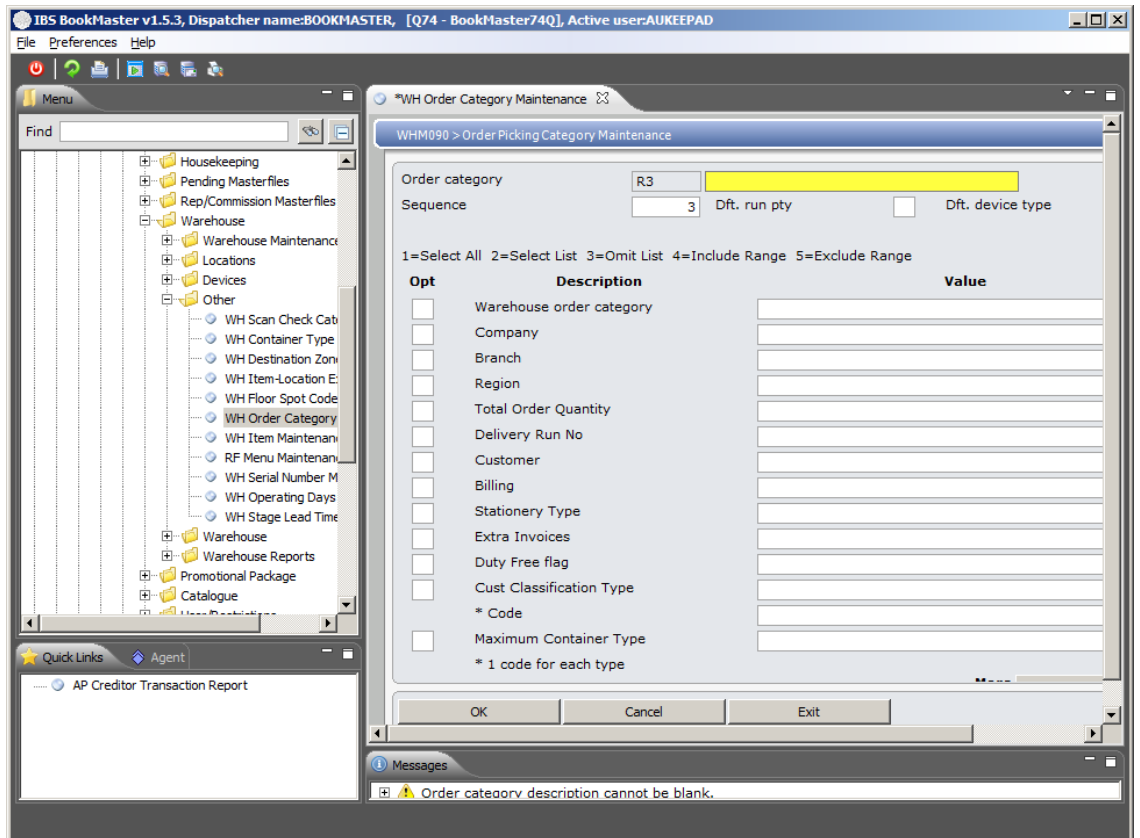
This is the user defined category of orders which may be chosen for picking, for example urgent, large or small. The order category must be unique across all warehouses and picking methods.

4. Key in the required fields and click **OK**.

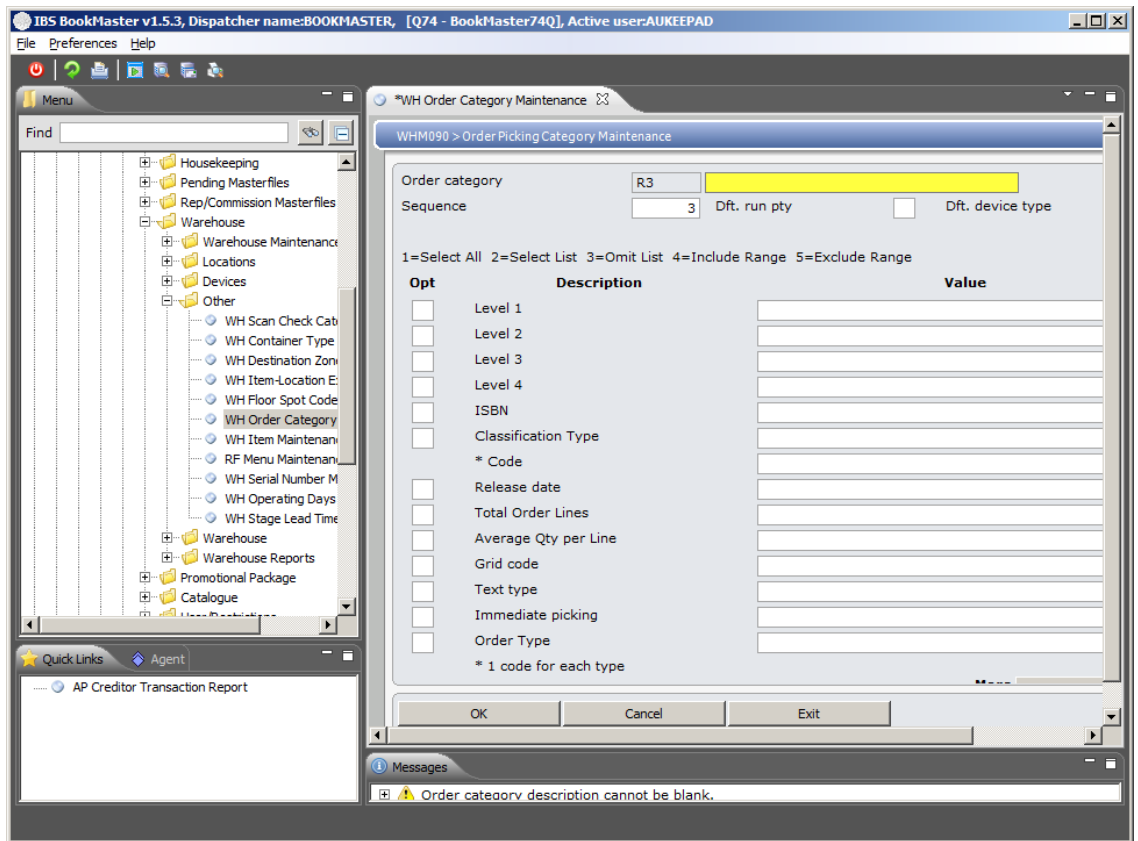
WHM090 Order Picking Category Maintenance selection panel to create definition for the order picking category is displayed.



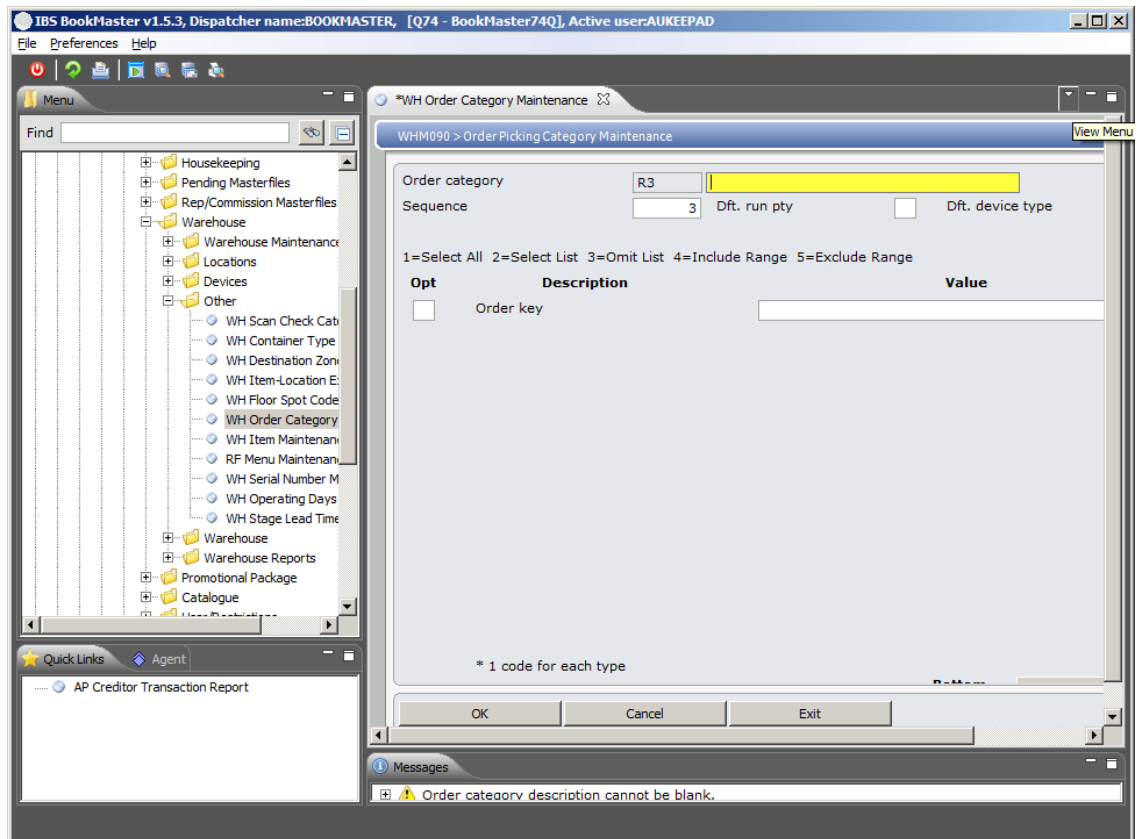
5. Page Down.



6. Page Down.



7. Page Down.



8. Key in the required fields and click **OK**. This adds new Order Picking Category.

Example 2: Maintenance of an existing Order Picking Category

This example describes how to maintain existing Order Picking Category.

1. Repeat step 1 and 2 of [Example 1: Addition of a new Order Picking Category](#).
2. Select an existing order category and click on **Change**.

WHM090 Order Picking Category Maintenance appears in change mode and allows making changes in existing order picking category.

3. Make necessary changes and click **OK**. This changes the existing Order Picking Category.

Example 3: Deletion of an existing Order Picking Category

This example describes how to delete existing order Category.

1. Repeat step 1 and 2 of [Example 1: Addition of a new Order Picking Category](#).
2. Select an existing order category and click on **Delete**.

WHM090 Order Picking Category Maintenance appears in delete mode and allows deleting existing order picking category.

3. Click **OK** to confirm deletion. This deletes the existing Order Picking Category.