
WHM030 Warehouse Zone Maintenance

<i>Overview</i>	<p>The defining of physical locations within a warehouse is a significant task. RF systems require detailed specifications of each location in order to make picking and putaway decisions.</p> <p>For Location Controlled Warehouses, Zones need to be established. A Zone is a logical grouping of aisles with the same characteristics. For example, all aisles in the bulk area could be one zone, however more than one bulk zone could be used if needed. Each zone requires a defined picking and putaway sequence, as well as its own unique location mapping.</p>
<i>Purpose</i>	<p>This panel allows you to:</p> <ul style="list-style-type: none">Add a new zone for a warehouseMaintain existing zone for a warehouseDelete existing zone for a warehouseMaintain Aisles for existing zone of a warehouse

Explanation

The complete location reference is a Location Map and this is required when creating the zones. Therefore the complete warehouse layout should be planned prior to creating the various locations and parameters for locations.

A Zone is the top level of a location definition defined by a 2 character code. Within Zones there are Aisles. Aisles are divided into Bays. Bays are then divided into Levels or shelves and the shelves can then be divided into positions or bins. The system provides for 3 positions per level.

There are three mandatory zones used by the system and these are established in Control Files rather than using Zone Maintenance. These zones are for Receiving, Returns and Dispatch. Other zones that might be required are Picking, Forward, Quality Control.

Examples

This section illustrates examples concerning:

[Example 1: Addition of a new zone for a warehouse.](#)

[Example 2: Maintenance of an existing zone for a warehouse.](#)

[Example 3: Deletion of an existing zone for a warehouse.](#)

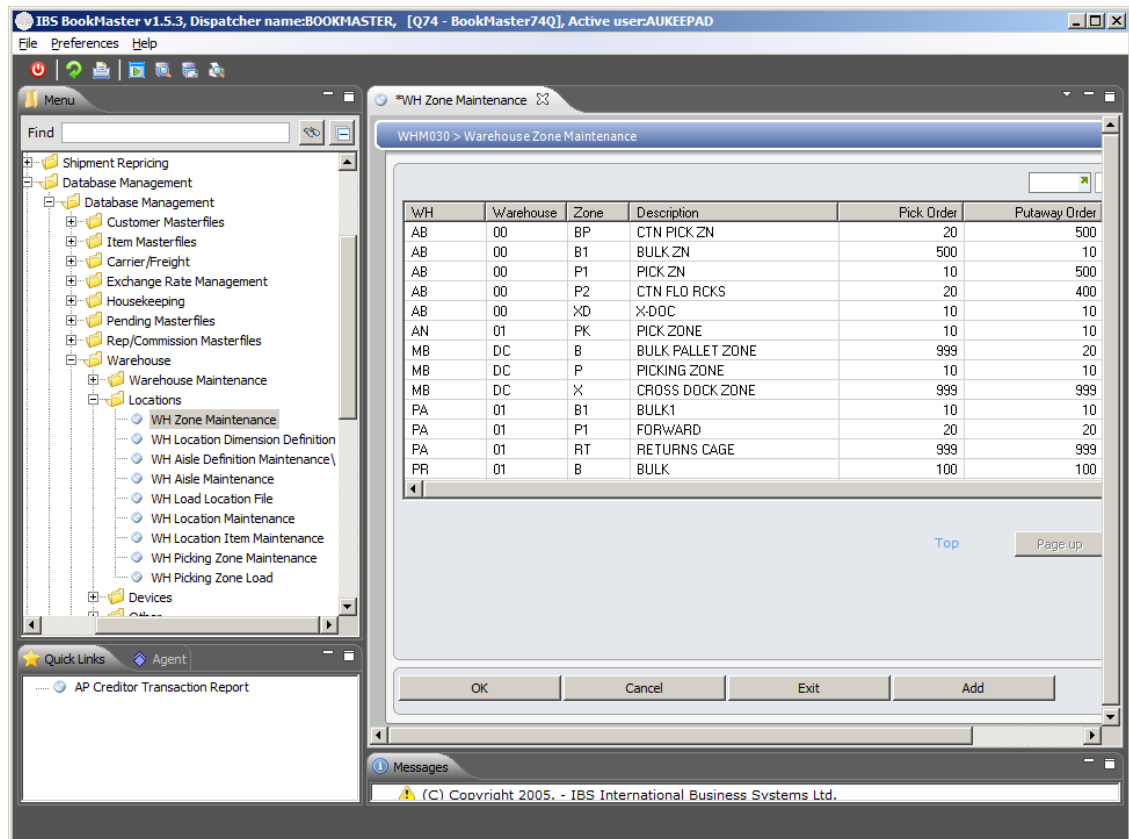
[Example 4: Maintenance of Aisles for existing zone of a warehouse](#)

Example 1: Addition of a new zone for a warehouse

This example describes how to add a new zone for a warehouse.

1. Select option **WH Zone Maintenance** from the Base Modules>Distribution>Masterfiles>Database Management>Database Management>Warehouse>Locations menu.

WHM030 Warehouse Zone Maintenance main panel is displayed.



Options

Change

Access Warehouse Zone Maintenance in change mode to maintain existing warehouse zone.

Delete

Access Warehouse Zone Maintenance in delete mode to delete existing warehouse zone .

Aisles

Maintenance of aisles for existing zone of a warehouse.

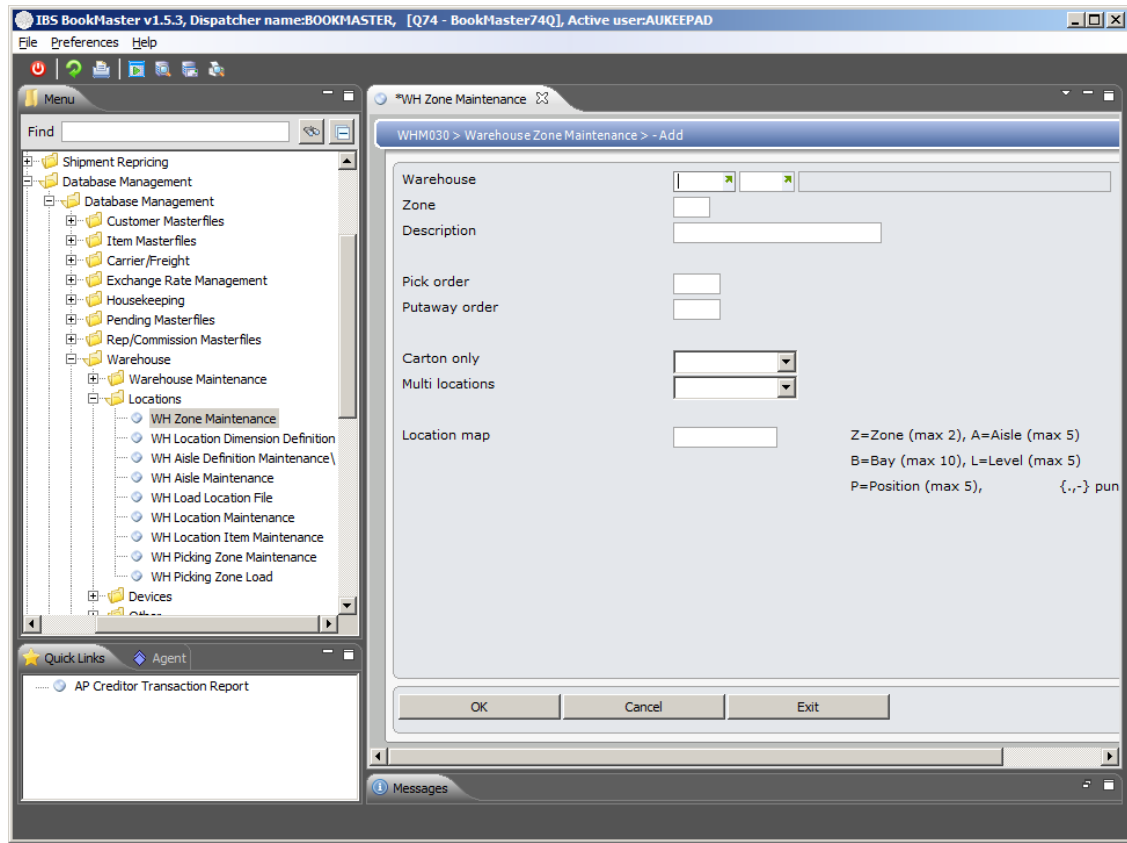
Functions

Add

Access Warehouse Zone Maintenance in add mode to add new zone for a warehouse.

2. To add a new zone for a warehouse, click **Add**.

WHM030 Warehouse Zone Maintenance panel is displayed in add mode.



Relevant Fields

Warehouse

The code of the warehouse for which you want to add a zone..

Zone

This is a logical grouping of aisles or areas in the warehouse set aside for a specific purpose. Define the zone using a 1 or 2 digit code. Examples of user defined zones could be: F=Forward, B=Bulk, D=Dispatch, R=Receiving, C>Returns, O=Open, Q=QC. These codes cannot be changed once created.

NOTE: The Dispatch, Receiving and Returns Zones are reserved zones which must be NOT be setup here but setup in the following Control Files before any other zones are created.

TMSWH/ZONE-DSP Zone describing the dispatch area **D**

TMSWH/ZONE-RCV Zone describing the receiving **R**

TMSWH/ZONE-RET Zone describing the returns area **C**

No Zone Maintenance is required for these reserved zones.

Description

A description or name of the Zone must be given.

Pick order	This allocates the sequence used to pick an order when stock exists in multiple zones. It determines which zones to pick/replenish from first. For example zone 1 could be set to sequence 10 (to be picked first) followed by zone 2 (sequence 20) and so on.
Putaway order	This is much the same as a pick order but refers to the sequence in which zones will be selected for putting away received goods to multiple zones. For example putaway received stock in bulk locations spread across zones. The dimensions of the location drive the putaway.
Carton only	Tick if stock in this zone is to exist in full cartons only, no split packs. For example bulk stock versus picking stock as bulk stock packaging should usually not be broken. Picking stock should allow cartons to be split in which case the flag is No. This relates to the putaway function.
Multi locations	Select Yes if titles can be stored in multi-locations. This field indicates if a title can be stored in more than one location within a zone. Select No if titles cannot be stored in multiple locations. However if the system finds a match in multiple locations it uses the match. Select Mandatory no if titles must always be stored in one location only.
Location map	The location map determines the identification rules which apply to stock locations, where Z = Zone (2 char), A = Aisle (5 char), B = Bay (10 char), L = Level (5 char), and P = Position (5 char). You can identify a particular location as any combination of zone, aisle, bay, level or position. For example, a location in zone E, aisle A, bay 10 and level C might be assigned a location map of ZABBL and would be identified by EA10C. At least one zone is required. Note: If punctuations are used, they must be entered for all cases of daily processing.

3. Key in all the required fields and Click OK.

New Zone for a warehouse is added.

Example 2: Maintain an existing zone for a warehouse

This example describes how to maintain an existing Zone for a Warehouse.

1. Repeat step 1 as in [Example 1: Addition of a new zone for a warehouse](#)
2. Select an existing zone and click option Change.

WHM030 Warehouse Zone Maintenance panel is displayed in **Change** mode.

3. Make required changes and click OK to confirm the changes. This changes the existing Zone for a warehouse.

Example 3: Delete an existing zone for a warehouse

This example describes how to delete an existing zone for a warehouse.

1. Repeat step 1 as in [Example 1: Addition of a new zone for a warehouse](#)
2. Select an existing zone and click option Delete.

WHM030 Warehouse Zone Maintenance panel is displayed in **Delete** mode.

3. Click OK to confirm deletion. This deletes the selected Zone for a warehouse.

Note:

Zones cannot be deleted if records exist on the Aisle Masterfile and any attempt to delete such a zone results in the display of ***cannot delete - records exist on Aisle Master.***

Example 4: Maintenance of Aisles for existing zone of a warehouse

This example describes how to maintain aisles for existing zone of a warehouse.

1. Repeat step 1 as in [Example 1: Addition of a new zone for a warehouse](#)
2. Select an existing zone and click option Aisles.

WHM040 Aisles Maintenance panel to add or maintain an Aisle is displayed.