

---

# WHM020 Aisle Definition Maintenance

---

Overview	This program is used to create Aisle Definitions, by using either existing definitions as templates or creating new definitions from scratch. One Aisle Definition is setup for each aisle.
Purpose	<p>This panel allows you to:</p> <ul style="list-style-type: none"><li>Add a new Aisle Definition without basing it on an existing one</li><li>Add a new Aisle Definition basing it on an existing one</li><li>Add a new bay for an Aisle</li><li>Maintain existing bay for an Aisle</li><li>Delete existing bay for an Aisle</li></ul>

---

## Examples

This section illustrates examples concerning:

[Example 1: Addition of a new Aisle definition without basing it on an existing one](#)

[Example 2: Addition of a new Aisle definition basing it on an existing one](#)

[Example 3: Addition of a new bay for an Aisle](#)

[Example 4: Maintenance of an existing bay for an Aisle](#)

[Example 5: Deletion of an existing bay for an Aisle](#)

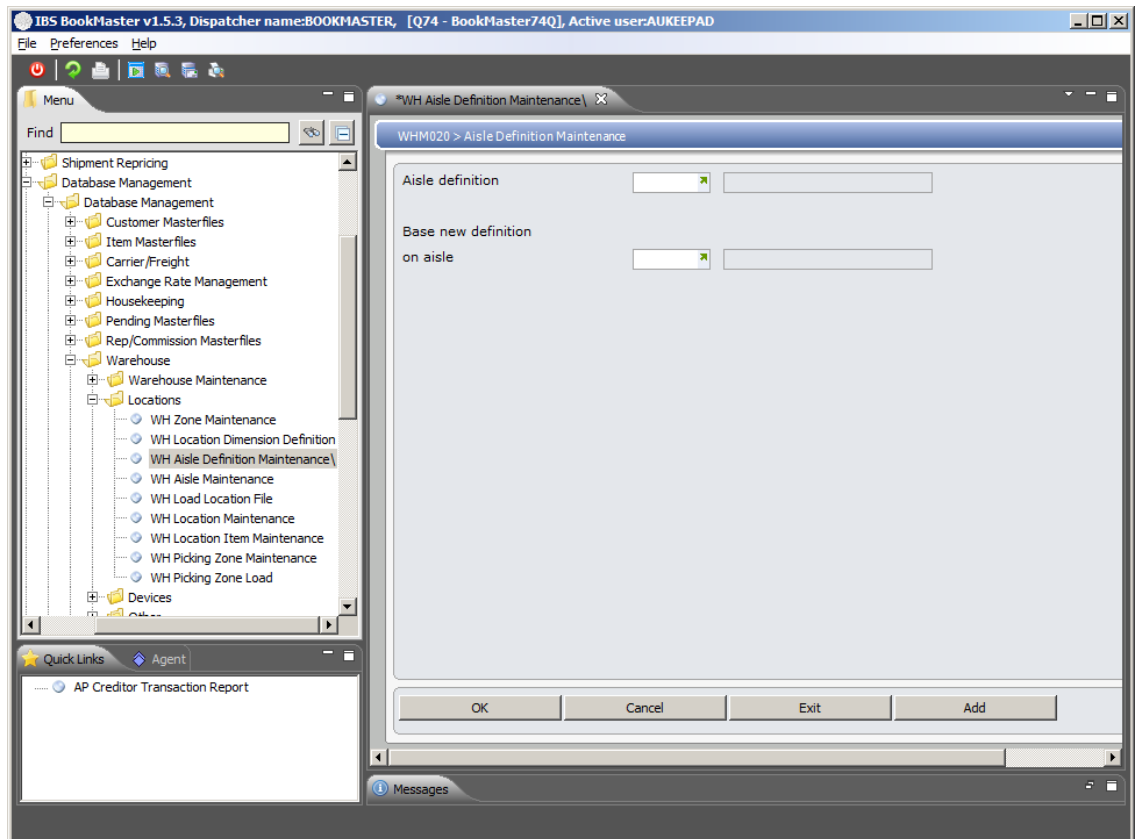
---

### Example 1: Addition of a new Aisle definition without basing it on an existing one

This example describes how to add a new Aisle definition without basing it on an existing definition.

1. Select menu option **WH Aisle Definition Maintenance** from Base Modules>Distribution>Masterfiles>Database Management>Database Management>Warehouse>Locations menu.

WHM020 Aisle Definition Maintenance selection panel is displayed.



## Functions

### Add

Access Definition Maintenance in Add mode to add new Aisle Definition.

## Relevant Fields

### Aisle Definition

This uniquely defines the Aisle. This field can be alpha, numeric or alphanumeric as per the following examples: BLK, B1, B10 OR 01-09 etc.

Note: This field must have a definition in it to be able to use the Add function.

### Aisle Definition Description

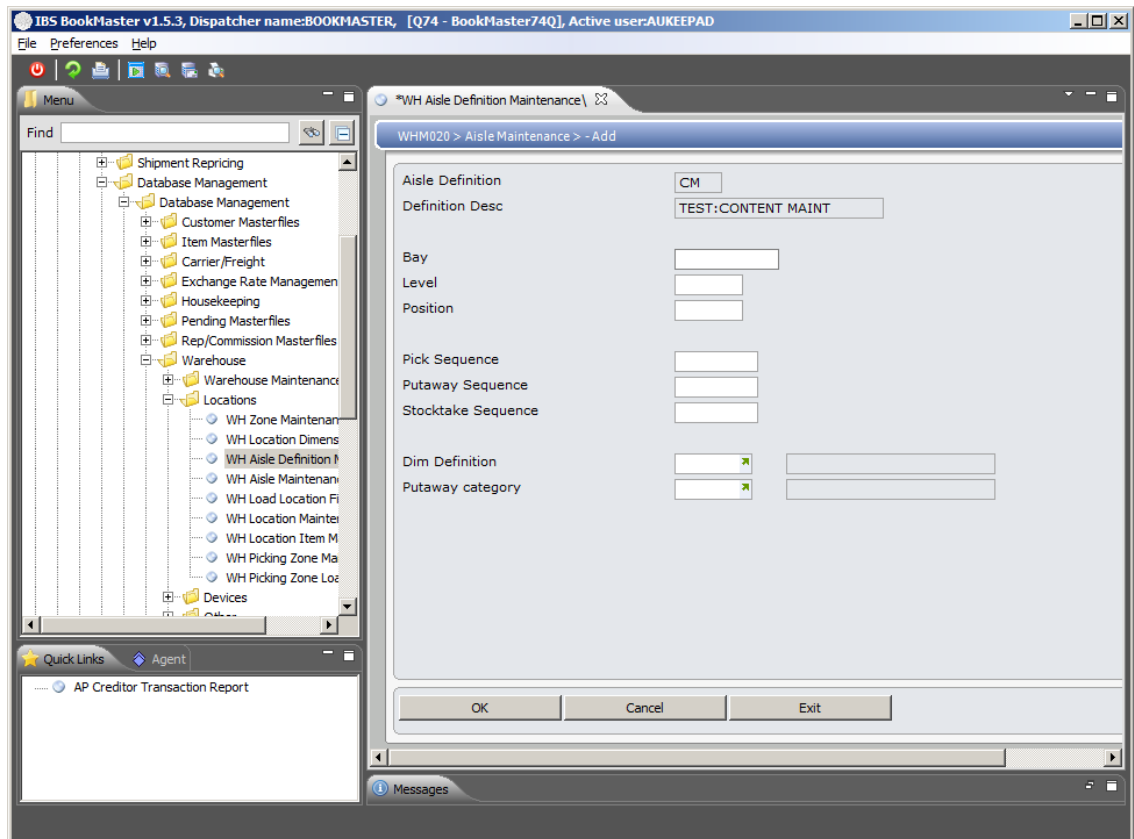
An extended description for the name of the aisle definition.

### Base new definition on Aisle

When a new aisle is to be set up, this field can be used as a shortcut by indicating the existing definition from which to copy or base the new definition. Once the details have been copied into the new definition, changes can then be made to suit the new aisle.

2. Enter an Aisle definition and click **Add**.

**WHM020 Aisle Maintenance –Add** panel is displayed.



## Relevant Fields

Put away  
category

This is a grouping, usually used in RF warehousing, that allows certain titles to go into certain locations. In the Title Masterfile, the Putaway Category must be allocated to the Title. During processing, if the system cannot determine where to place stock, a zone overflow occurs and stock is stored in a zone called OVERFLOW.

Dim definition

This code identifies the location dimension definition.

Bay range

This is the number of Bays within an Aisle. Keep in mind that this must be in the format identified in the zone Location Map. If the Bay is 2 characters in the zone Location Map then this value must be 2 characters. For example 10 bays = 01-10. Bays can also be denoted using single alpha characters, for example, A – C generates bays A,B,C correctly but AA – BZ does not generate AA, AB, AC etc. Bays are then divided into Levels which in turn are divided into Positions.

Pick order initial  
sequence

This Pick Order Initial Sequence is the order in which the stock is to be PICKED from the Bays:

A = Ascending

O = Odd and even

P = Odd then even

Z = Descending

E = Even then odd

F = Even then odd, descending

Pick order level in sequence	<p>This Pick Order Level Sequence is for setting the number of Levels or racks within Bays and the sequence of how stock is to be PICKED from the Levels.</p> <p>If the Location Map in the Zone Maintenance does not require Levels or Positions, a 1 should be entered in this field.</p>
Pick order position in sequence	<p>This Pick Order Position in sequence is how many Positions or sections or bins are in each Level. For example if there are 2 sections, one is (L)eft and one is (R)ight.</p>
Putaway order initial sequence	<p>The Putaway Order Initial sequence is the order of the Bays in which the stock is to be PUTAWAY:</p> <p>A = Ascending  O = Odd and even  P = Odd then even  Z = Descending  E = Even then odd  F = Even then odd, descending</p>
Putaway order level in sequence	<p>This Putaway Order Level sequence is for setting the number of Levels or racks within Bays and the sequence of how stock is to be PUTAWAY.</p> <p>For example how the stock is to be put back after being returned from a customer or a shipment being received. Sequencing is the same as above. If the location map in the Zone Maintenance does not require levels or positions, a 1 should be entered in this field.</p>
Putaway order position in sequence	<p>This Putaway Position sequence defines how many Positions there are in each level. For example for 2 sections, indicate one Position to be (L)eft and the other to be (R)ight.</p>
Stocktake order initial sequence	<p>The Stock take Order Initial sequence is the order of the Bays in which the stock is to be counted for STOCKTAKE:</p> <p>A = Ascending  O = Odd and even  P = Odd then even  Z = Descending  E = Even then odd  F = Even then odd, descending</p>
Stocktake order level in sequence	<p>This Stock take Order sequence is for setting the number of Levels or racks within Bays and the sequence of how stock is to be counted in STOCKTAKE.</p> <p>If the Location Map in the Zone Maintenance does not require Levels or Positions, a 1 should be entered in this field.</p>
Stocktake order position in	<p>This Stock take Order initial sequence is how many Positions there are in each level. For example for 2 sections, indicate</p>

sequence

one Position to be (L)eft and the other to be (R)ight.

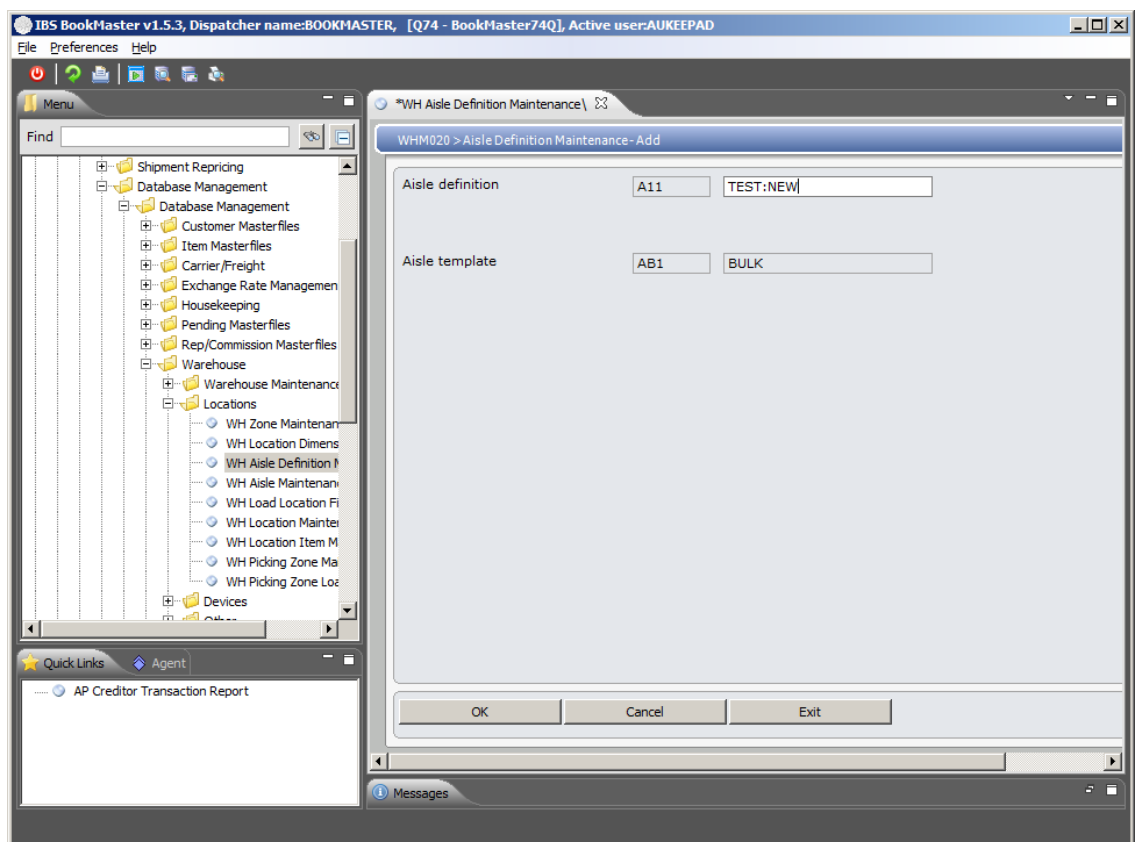
3. Key in the required fields and click **OK**. This adds a new Aisle definition.

---

### Example 2: Addition of a new Aisle definition basing it on an existing one

This example describes how to add a new Aisle definition basing it on an existing one.

1. Repeat step 1 as in [Example 1: Add a new Aisle definition without basing it on an existing one](#)
2. Enter an Aisle definition and select existing definition from which to copy or base the new definition and click on **Add**.



3. Click **OK**. This adds a new Aisle definition based on an existing one.

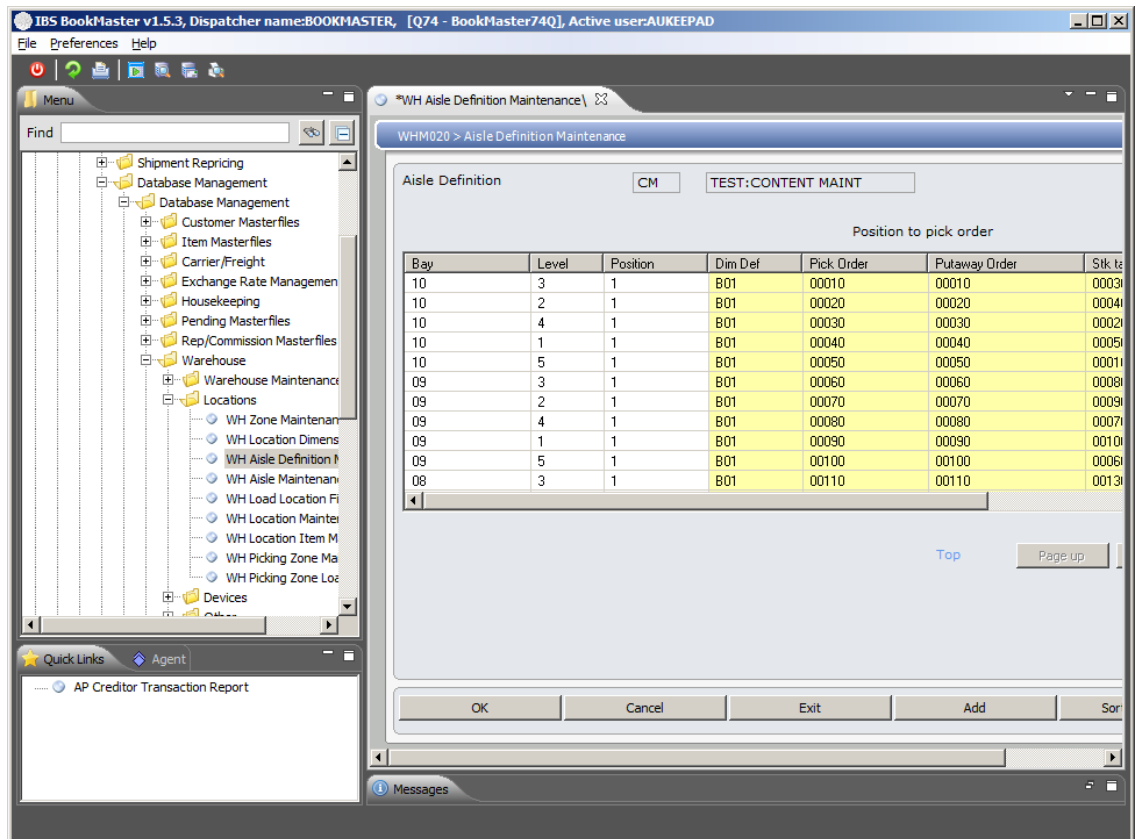
---

### Example 3: Addition of a new bay for an Aisle

This example describes how to add a new bay for an Aisle.

1. Repeat step 1 as in [Example 1: Add a new Aisle definition without basing it on an existing one](#)
2. Select an existing Aisle definition and click **OK**.

WHM020 Aisle Definition Maintenance main panel appears.



## Options

[Change](#)

Access Aisle Definition Maintenance in Change mode to make necessary changes in existing bay for the selected Aisle.

[Delete](#)

Access Aisle Definition Maintenance in Delete mode to delete existing bay for the selected Aisle.

## Functions

[Add](#)

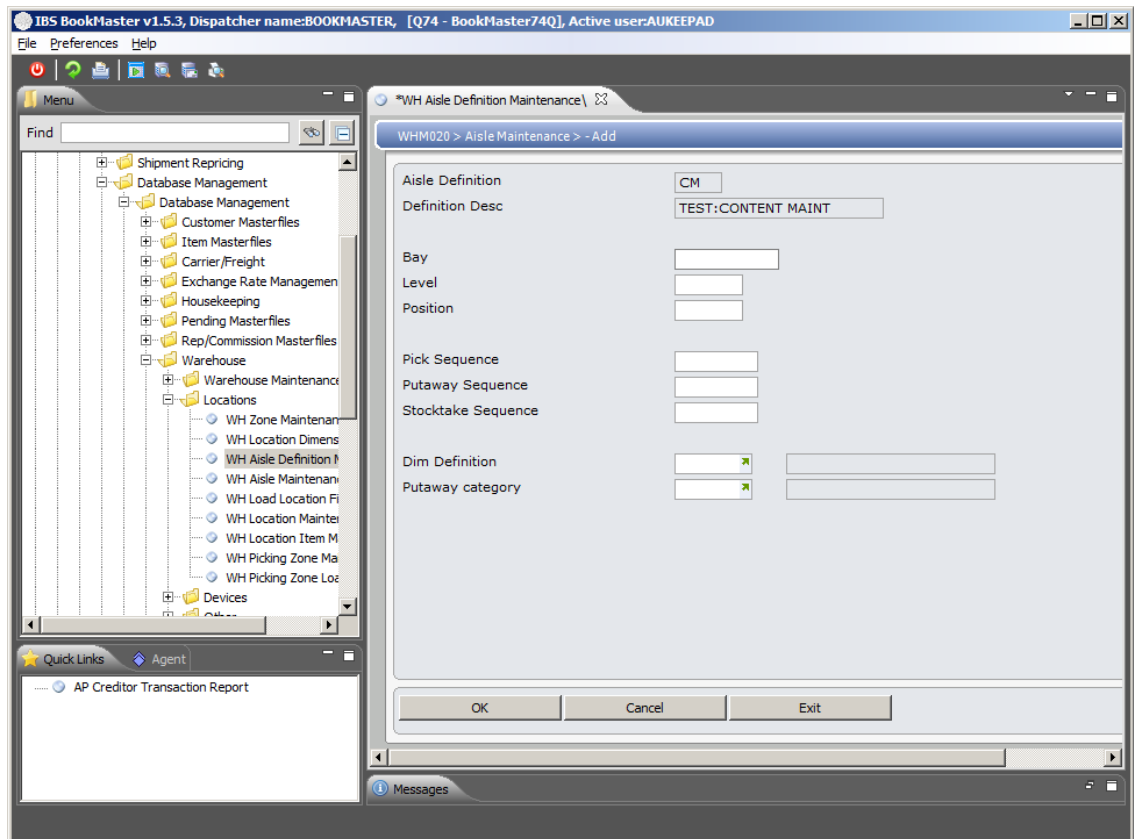
Access Aisle Definition Maintenance in Add mode to add new bay for the selected Aisle.

[Sort putaway/  
Sort stk take/  
Sort pick](#)

Toggles between Sort putaway, Sort stock take and Sort pick to display details corresponding to the sequence in Putaway order column, Stock take order column and Pick order column respectively

3. Click **Add** to add a new bay for the selected Aisle

**WHM020 Aisle Maintenance** in add mode is displayed.



#### Relevant Fields

##### Bay

This is a section of an aisle, divided into locations of varying sizes depending on use.

##### Level

This is the level or number of racks within a bay.

##### Position

This is the positions or number of bins in a level. For example if there are 2 sections or positions on a level indicate that one is (L)eft and one is (R)ight.

##### Pick sequence

This is the sequence in which stock is to be picked in this Aisle.

##### Put away sequence

This is the sequence in which stock is to be putaway in this Aisle.

##### Stock take sequence

This is the sequence in which stock is to be counted for stock take.

##### Dim definition

This is a 3 digit alpha numeric code that identifies the location Dim Definition.

##### Put away category

In RF warehousing this is used for grouping titles into certain locations.

4. Key in the required fields and click **OK**. This adds a new bay for the selected Aisle.

#### Example 4: Maintenance of an existing bay for an Aisle

This example describes how to maintain existing bay for an Aisle.

1. Repeat step 1 and 2 as in [Example 3: Addition of a new bay for an Aisle](#)

2. Select an existing bay and click on **Change**.

WHM020 Aisle Definition Maintenance in change mode is displayed.

3. Make necessary changes to the required fields and click **OK**. This changes the selected bay.

---

### Example 5: Deletion of an existing bay for an Aisle

This example describes how to delete existing bay for an Aisle.

1. Repeat step **1** and **2** as in [Example 3: Addition of a new bay for an Aisle](#).
2. Select an existing bay and click on **Delete**.

WHM020 Aisle Definition Maintenance in delete mode is displayed.

3. Click **OK** to confirm deletion. This deletes the selected bay.