
WHM010 Location Dimension Definition

Overview This program is used to add and maintain the dimension of each type of Location within a zone/aisle. The dimensions being the size of the Location defined as the: length, width, depth, weight, total units and maximum number of pallets.

Purpose This panel allows you to:

- Add a new location dimension definition.
- Maintain existing location dimension definition
- Delete existing location dimension definition

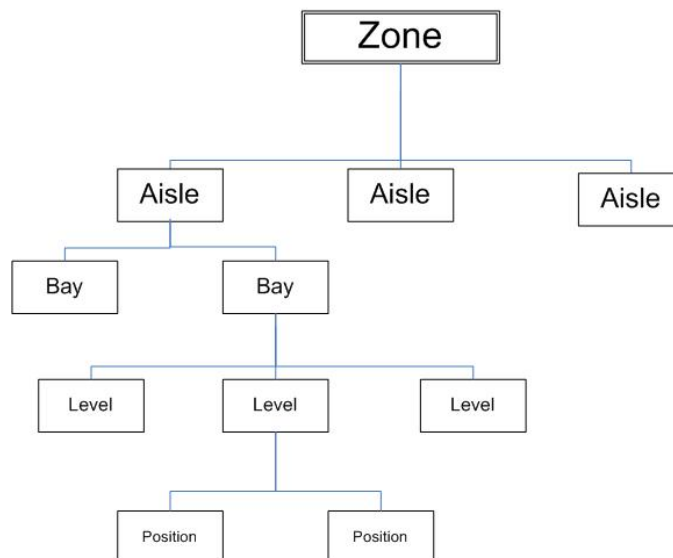
Explanation

A location can store multiple titles bearing in mind that for pick locations this could increase picking errors. Bulk locations can have more than one title on a pallet.

Locations can be defined with the maximum size but this would not be suitable if proactive location fill replenishments are being used.

By not fixing locations for titles, the location becomes available for another product when the stock falls to zero.

An example of the Location hierarchy is:



If defining a Bulk Dimension Definition for example, Bay level and downwards would probably be the hierarchy structure.

Examples

This section illustrates examples concerning:

[Example 1: Addition of a new location dimension definition](#)

[Example 2: Maintenance of an existing location dimension definition](#)

[Example 3: Deletion of an existing location dimension definition](#)

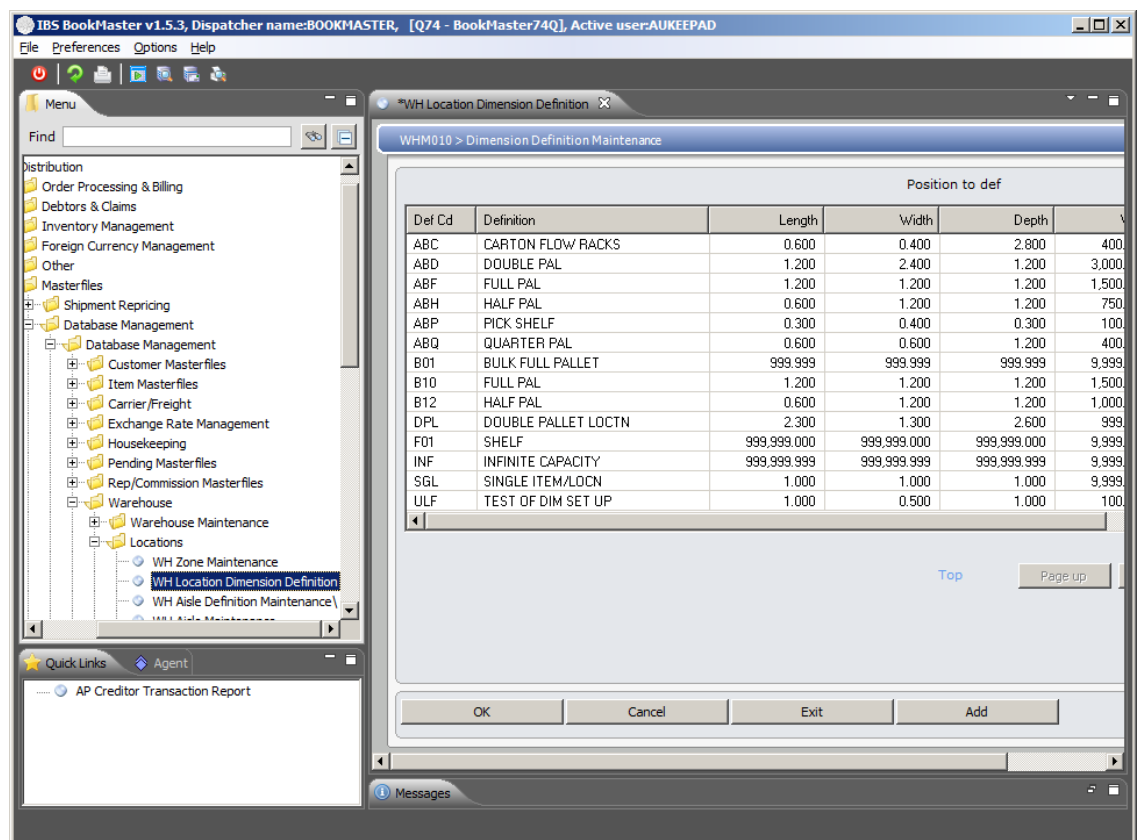
Example 1: Addition of a new location dimension definition

The add option is used to create a Dimension Definition for each Location variation. For example if all Bulk Locations are the same size, only one Bulk Dimension Definition is required.

This example describes how to add a new Dimension Definition.

1. Select option **WH Location dimension definition** from Base Modules>Distribution>Masterfiles>Database Management>Database Management>Warehouse>Locations menu.

WHM010 Dimension Definition Maintenance main panel is displayed.



Options

[Change](#)

Access Dimension Definition Maintenance in Change mode to make necessary changes in existing Location Dimension definition

[Delete](#)

Access Dimension Definition Maintenance in Delete mode to delete existing Location Dimension definition

Functions

Add

Access Dimension Definition Maintenance in Add mode to add new Location Dimension Definition.

2. To add a dimension definition click **Add**.

WHM010 Dimension Definition Maintenance –Add panel is displayed.

IBS BookMaster v1.5.3, Dispatcher name:BOOKMASTER, [Q74 - BookMaster74Q], Active user:AUKEEPAD

File Preferences Help

Menu

Find

Distribution

- Order Processing & Billing
- Debtors & Claims
- Inventory Management
- Foreign Currency Management
- Other
- Masterfiles
 - Shipment Repricing
 - Database Management
 - Customer Masterfiles
 - Item Masterfiles
 - Carrier/Freight
 - Exchange Rate Management
 - Housekeeping
 - Pending Masterfiles
 - Rep/Commission Masterfiles
 - Warehouse
 - Warehouse Maintenance
 - Locations
 - WH Zone Maintenance
 - WH Location Dimension
 - WH Aisle Definition Main

Quick Links

Agent

AP Creditor Transaction Report

WHM010 > Dimension Definition Maintenance > - Add

Dimension def

Definition desc

Locn length 0.00 (M)

Locn width 0.00 (M)

Locn depth 0.00 (M)

Weight limit (KG)

Quantity limit

Number of diff Isbns

Max no. of pallets

OK Cancel Exit

Messages

Relevant Fields

Dimension

This code identifies the location dimension definition.

Def

Definition desc

This is a description of the definition.

Location length

This is the length or height measurement (could be metres) of the location.

Note: If there are no limits on this field fill it with 999's.

Location width

This is the width (side to side) measurement of the location.

Note: If there are no limits on this field fill it with 999's.

Location depth

This is the depth (front to back) measurement of the location.

Note: If there are no limits on this field fill it with 999's.

Weight limit

This is the maximum weight the location can hold. The weight measurement could be kilograms.

Quantity limit

The maximum quantity of goods the location or device can hold. In Container type this is the limit allowed for the

	container.
Number of different items	The number of different titles the location can contain. Entry of this field is mandatory. When the flag is set to "1" the system must not allow more than the nominated number of titles into the location.
Suggested(0) or Mandatory(1)	When the flag is set to 1 for Mandatory, the system must not allow more than the nominated number of different item into the location. When validating multiple locations for an item, stock records with zero SOH balances are ignored. TUN and Item Barcode are valid Title identifiers. A suggested limit is the other option which is indicated with a 0. If the user tries to move stock which goes against these rules, the screen displays an error.
Max no. of pallets	The maximum number of pallets a location can hold. This field is not a validated field whilst all other fields require data to be keyed. If the storage area is too small to hold a pallet, key in zero (0) or leave blank.

3. Key in the required fields and click **OK**. This adds new dimension definition.

Example 2: Maintenance of an existing location dimension definition

This example describes how to maintain existing Dimension Definition.

1. Repeat step 1 as in [Example 1: Addition of a new location dimension definition.](#)
2. Select an existing definition and click on **Change**.

WHM010 Dimension Definition Maintenance appears in change mode and allows making changes in existing dimension definition.

3. Make necessary changes and click **OK**. This changes the existing dimension definition.

Example 3: Deletion of an existing location dimension definition

This example describes how to delete existing Dimension Definition.

1. Repeat step 1 as in [Example 1: Addition of a new location dimension definition.](#)
2. Select an existing definition and click on **Delete**.

WHM010 Dimension Definition Maintenance appears in delete mode and allows deleting existing dimension definition.

3. Click **OK** to confirm deletion. This deletes the existing dimension definition.