
PSO020 Location Extract

Overview

This extraction process uses the Warehouse Location file and a workfile to generate all the necessary transactions according to the definitions setup.

Explanation

The workfile contains the following fields:

Charge/Cost Table, Table Type 1=Crg, 2=Cost, Chargeable Customer, Title, Warehouse Location, Warehouse Number, Location, Volume, Weight–Gross, Standard Unit Cost, Stock On Hand Qty, No Of Period, Cumulative Qty.

This process uses the entries in **TMSPS/CBSE2** Locational Charge Basis 1 (System defined).

Note: when this option is taken it will delete all generated records, and will rebuild for the selected period.

For the following codes the Warehouse number and locations are used with the charge basis definition. If the stock on hand is zero record is only created for the current period.

- 210 = Number of storage
- 214 = Storage volume

The following codes are generated from the workfile with the charge basis definition.

- 221 = Stock quantity
- 222 = Stock value
- 223 = Stock weight
- 224 = Stock volume
- 231 = MAT quantity
- 232 = MAT value
- 233 = MAT weight
- 234 = MAT volume

Examples

This section illustrates examples concerning:

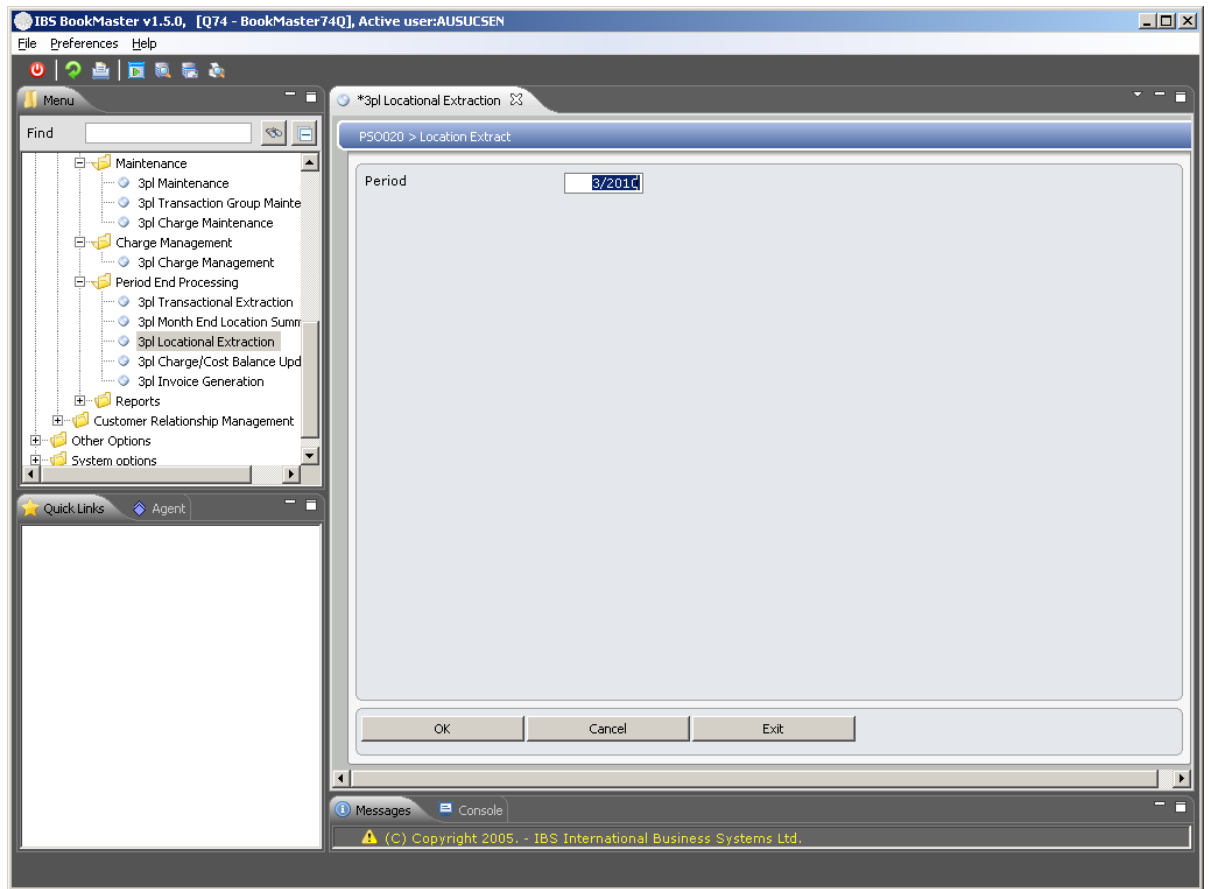
[Example 1: Location Extract](#)

Example 1: Location Extract

This example describes how to extract locations.

1. Select option **3pl Locational Extraction** from Publishing Modules>3rd Party Logistics>Period End Processing menu.

PSO020 Location Extract selection panel is displayed.



Relevant Fields

Period

Current period defaults or it can be overridden. Final record rebuilds for the selected period.

2. Enter period and click **OK**.

Locational extraction process is complete.