
PSO015 Location Summary

Overview

This extraction process uses the Warehouse Location History file and the Location Item file to generate all the necessary transactions according to the definitions setup.

Explanation

The calculation is as follows:

- For previous period the information is extracted from the Warehouse Location History file, using the location type 1 location, warehouse code, location, title, and Stock on Hand Quantity.
- For current period then the information is extracted from the Location Item file, using the location type 1 location, warehouse code, location, title and Stock on Hand quantity.

Note: When this option is taken it will delete all generated records, and will rebuild for the selected period.

Examples

This section illustrates examples concerning:

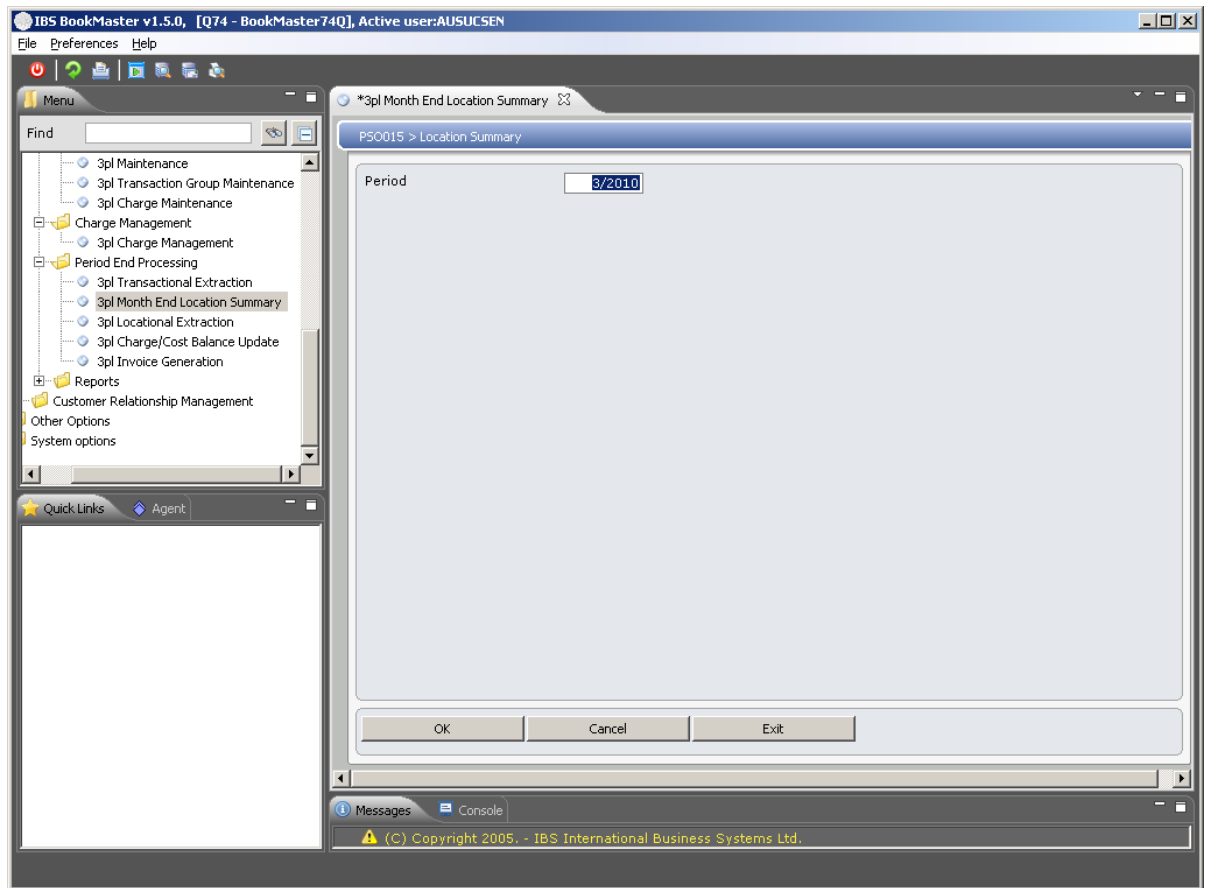
[Example 1: Generate Location Summary Transactions](#)

Example 1: Generate Location Summary Transactions

This example describes how to generate location summary transactions.

1. Select option **3pl Month End Location Summary** from Publishing Modules>3rd Party Logistics>Period End Processing menu.

PSO015 Location Summary selection panel is displayed.



Relevant Fields

Period

Current period defaults or it can be overridden. Final record rebuilds for the selected period.

2. Accept the default period or override it if required and then click **OK** to continue the process.

Locational transaction process is complete.