

---

# PSM030 Publisher Client Charge Maintenance

---

*Overview* This Charge Table holds up to three charge basis definitions for each service. Services are defined in **TMSPS/CSRV** Charge Services.

---

## Explanation

To setup a Charge Table the following parameters must already have been established.

- Transaction charge basis (**TMSPS/CBSE1**)
- Calculation method (**TMSPS/CALM**) System defined.
- Charge/Cost Tables must have been associated with a Client and their product hierarchy.
- Transaction Groups must have been established if Service type charging is applicable.

In this example we have established the matrix which determines what charges to apply depending on the value of the invoices and number of picks plus a set or constant additional fee.

Charges are calculated based on the number times a location is visited to pick the Publisher Clients products in a month. A set rate per visit, 20c in this example, is established for this charge basis. In addition a Client will be charged 15% of the net value of their invoices for that month.

How much to charge can then be broken down by quantity breaks. So for example if the number of picks is greater than a selected quantity the charge rate can reduce. The same applies to the value of the invoices, the higher the value, the less the charge based on up to 5 quantity or value breaks. In this example if the net invoice value is greater than \$10,000 the charge reduces from 15% to 10%.

A constant value can also be included in the charges, a constant being a set additional charge, for example administrative fees or IT services. In this example a constant charge of \$500 per month will be added.

More examples of services or transactions attracting charges are:

- Invoice-only transactions where no inventory handling is required.
- Remainder transactions where no picking or packing is required.
- Returns processing which includes putaway.
- Returns processing which results in remainders or pulping.

A minimum order surcharge may be applicable.

Warehouse services that may be charged could include:

- Deliveries local or overseas
- Bulk stickering
- Price stickering at pick face
- Rubber banding
- Shrink wrapping
- Making up packs
- Storage charges – fee structures for forward locations and excess locations

Example:

<b>Charge Table</b>	GEN					
<b>Transaction Group Code</b>	Invoice					
<b>Service Provided</b>	Customer Service					
<b>Minimum charge</b>	\$1500.00					
<b>Charge Accumulative Method</b>	A (A=Addition, H=Highest, L=Lowest)					
	<b>Charge Value Break</b>					
<b>Charge Basis</b>	<b>Cal mtd</b>	<b>1</b>	<b>2</b>	<b>3</b>	<b>4</b>	<b>5</b>
<b>Invoice net value</b>	%	15.00	10.00			
			10000			
<b>Number of picks</b>	V	.20				
<b>Constant</b>	C	500				

**Formula:**

Minimum charge value = <, >.

Charge accumulative method = Add, Highest, Lowest.

Charge basis 1 x Cal Mtd + Charge Basis 2 x Cal mtd + Charge basis 3.

**Example:**

For a monthly net invoice total of \$20,000.00 (according to the Distribution Transaction files at the time of running the extraction process) the above table would charge \$20000 x 15% + 110 (number of picking slips) x .20 + \$500 = \$3522.00. Minimum charge does not apply here.

**Answer:**

$$\$20000 \times 15\% + 110 \times .20 + \$500 = \$3522$$

**Freight Proportionment for 3<sup>rd</sup> Party Distribution**

The weight is used as the factor to proportion the total consignment weight across the invoice lines in the consignment.

**Example:**

Consignment Weight	6.0kg
Product Weight	5.8kg 96.67%
Packaging Weight	.2kg 3.33%
Consignment Cost	\$ .28
Product Cost	\$ 8.22

5 invoice lines in the consignment

Product Calculations - \$8.22

Invoice Line	3P Member	Product Weight	% Proportion	\$ Consignment Packaging Value - \$0.28	\$ Consignment Product Value \$8.22	\$ Consignment Total Value \$8.50
Line 1	A	2.5	43.10	.13	3.54	3.67
Line 2	B	0.5	8.62	.02	.71	.73
Line 3	C	1.3	22.41	.06	1.84	1.90
Line 4	A	1.0	17.24	.05	1.42	1.47
Line 5	B	0.5	8.62	.02	.71	.73
		<b>5.8</b>	<b>99.99</b>	<b>.28</b>	<b>8.22</b>	<b>8.50</b>

## Examples

This section illustrates examples concerning:

[Example 1: Add a Charge Matrix](#)

[Example 2: Copy Charge Matrix Details](#)

[Example 3: Delete Charge Matrix Details](#)

[Example 4: Change Charge Matrix Details](#)

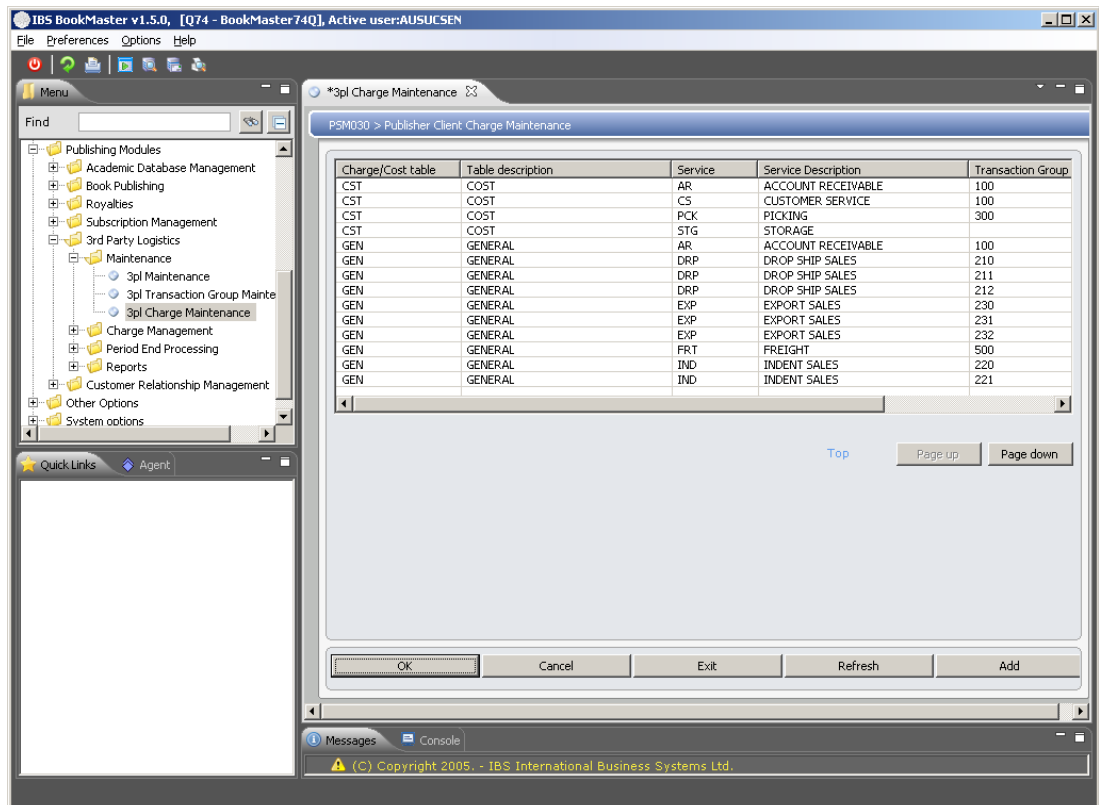
[Example 5: Display Charge Matrix Details](#)

### Example 1: Add a Charge Matrix

This example describes how to add a charge matrix.

1. Select option **3pl Charge Maintenance** from Publishing Modules>3rd Party Logistics>Maintenance menu.

**PSM030 Publisher Client Charge Maintenance** main panel is displayed.



## Options

**Copy**

Access Publisher Client Charge Maintenance in copy mode to copy the existing charge matrix definition.

**Delete**

Access Publisher Client Charge Maintenance in delete mode to delete the details regarding charge matrix definition.

**Change**

Access Publisher Client Charge Maintenance in change mode to change the details regarding charge matrix definition.

**Display**

Access Publisher Client Charge Maintenance in inquiry mode to change the details regarding charge matrix definition.

## Functions

**Add**

Access Publisher Client Charge Maintenance in add mode to add a charge matrix.

2. Click **Add** to add charge matrix.

**PSM030 Publisher Client Charge Maintenance** panel is displayed in add mode.

The screenshot displays the IBS BookMaster v1.5.0 application window. The main panel is titled "PSM030 > Publisher Client Charge Maintenance > - Add". It contains several input fields and a table. The fields are: "Charge table", "Service", "Transaction group", "Accumulative method", and "Minimum charge". Below these fields is a table with the following columns: "Charge Basis", "Short desc", "Cal mtd", "Charge value break 1", and "Charge value break 2". The table has several rows, with the first row highlighted in yellow. At the bottom of the panel are buttons for "OK", "Cancel", "Exit", and "Refresh". The application's menu bar includes "File", "Preferences", and "Help". The left sidebar shows a tree view of the application's modules, with "3pl Charge Maintenance" selected. The bottom of the window has a "Quick Links" section and a "Console" area.

## Relevant Fields

**Charge table**

Select the Charge Table for which charges/costs are being established.

In 3PL Charge Report valid choices are Charge, Cost or blank for all.

In Charge Table List select either Charge, Cost or blank for all.

In 3PL Management a Charge Table is displayed for each client.

**Service**

Select the Service Charge for which Charges/costs are being established.

**Transaction**

Select the Transaction Group for which charges/costs are being

group	established.
Accumulation method	Select the Accumulation Method to be applied to the Charge Bases. A=Addition will add the three charge/calculation methods together. H=Highest chooses the highest value of the three charge/calculation methods. L=Lowest chooses the lowest value of the three charge/calculation methods.
Minimum charge	If a minimum charge is to apply for the selected charge table, service and transaction group, a value must be entered here. If the value for the transactions generated falls below the minimum, the minimum value is used.
Charge basis	Each service type has a set of system defined variables called a Charge Basis. The Charge Basis is dependent on the Charge Table Chosen, either Charge or Cost. Charge will access <b>TMSPS/CBSE1</b> . Transactional Charge Basis and Cost will access <b>TMSPS/CBSE2</b> Location Charge Basis.
Cal mtd	Calculation Methods are C=Constant, %=Percentage, V=Value and Z= Nil Charge.
Charge value breaks 1–5	Charge value breaks can be setup up to apply charges based on a value or quantity increase. When C=Constant is used there can be no quantity breaks in the definition.

3. Key in required fields and click **OK**.

Charge matrix is added.

---

### Example 2: Copy Charge Matrix Details

This example describes how to copy existing charge Matrix Details.

1. Repeat step 1 as in [Example 1: Add a Charge Matrix](#)
2. Select a record and click Copy.

**PSM030 Publisher Client Charge Maintenance** panel is displayed in copy mode.

3. Key in required fields and click OK.

Existing record is copied in new record.

---

### Example 3: Delete Charge Matrix Details

This example describes how to delete Charge Matrix Details.

1. Repeat step 1 as in [Example 1: Add a Charge Matrix](#)
2. Select a record and click **Delete**.

**PSM030 Publisher Client Charge Maintenance** panel is displayed in delete mode.

3. Click **OK** to confirm deletion.

Record is deleted.

---

## Example 4: Change Charge Matrix Details

This example describes how to change Charge Matrix Details.

1. Repeat step 1 as in [Example 1: Add a Charge Matrix](#)
2. Select a record and click Change.

**PSM030 Publisher Client Charge Maintenance** panel is displayed in change mode.

3. Make required changes and click **OK**.

---

## Example 5: Display Charge Matrix Details

This example describes how to display Charge Matrix Details.

1. Repeat step 1 as in [Example 1: Add a Charge Matrix](#)
2. Select a record and click **Display**.

**PSM030 Publisher Client Charge Maintenance** panel is displayed in inquiry mode.

3. Make required changes and click **OK**.