
PSM010 Publisher Client Maintenance

Overview

Each publisher client is linked to a product grouping using the Title hierarchy and classification or a selected title.

Since many publisher clients may be charged based on the same criteria, common charging tables can be used. Publisher clients can have multiple definitions, however they should be setup with exceptions first, then the general rule.

TMSPS/CCTBL Charge and Cost Table, contains the Table code and indicates whether the table is a charge type or a cost type. Also indicated is which Source of Transaction and Type of Sale are applicable to the table.

Process Flow

1. First establish the following Control Files:

- **TMSPS/CCTBL** - Charge/Cost Table

This control file contains the table code description, whether it is a charge type or cost type, the source of transaction and type of sale.

- **TMSPS/CSRV** - Charge Services

This control file contains the Service codes and descriptions, and the non-stock title to be used in the invoice generation, and whether the service code relates to a transaction or location.

- **TMSPS/TGC** - Transaction Group Code

This control file contains the Transaction group code and descriptions that will be used in Transaction Group Maintenance and when viewing the results in the management program.

2. Establish a Charge/Cost file definition for each 3rd Party using 3rd Party Maintenance.
3. Establish the definitions for all the relevant Transaction groups using Transaction Group Maintenance. For example invoice, credit, receipts, large orders, small orders, storage etc. Multiple Document Types can be grouped under one Transaction Code.
4. Establish the Cost Definitions for each Cost Table, indicating the Service Groups and Transaction Groups applicable. Costs can be accumulated by adding (A) the results of various Charge Bases calculations or taking the highest (H) value of these calculations or the lowest (L) value. Per client, costs and the comparative charges can be view on the Client Charge Management option.
5. Establish the Charge Definitions for each Charge Table, Service Group and Transaction Group. Charges can be accumulated in the same way as Costs. A minimum charge can be set. The Charge Basis is calculated against transactions locations and freight charges.
6. The following extraction processes are run using the 3rd Party Logistics Period End Menu options:
 - 6.1. Generate the Transaction Extract which includes freight.
 - 6.2. Generate the Location Summary
 - 6.3. Generate the Location Extract

- 6.4. Generate the Charge/Cost update
7. Use 3rd Party Charge Management to review the results of the processing.
 - 7.1. Select the period, defaults to the current period.
 - 7.2. Select **2=Details**, to review the details for generated charges against the charge type.
 - 7.3. Select **1=Details**, against each line to view the original transaction.
 - 7.4. In the case of the location summary, the view is at the lowest level of stock storage.
 8. If the results are not as expected, go back to steps 2, 3, 4 and 5 and make the necessary changes in the definition.
 - 8.1. Re-run steps 6.1 to 6.4 and check the maintenance file in step 7.
 - 8.2. Steps 2-6 can be re-run as many times as required to achieve the desired results.
 9. Use Invoice generation to generate invoices (found on the 3rd Party Period End Menu).
 - 9.1. Generate invoices for all clients, leaving the selection fields blank. Or choose the table and client range within a given period.
 - 9.2. Alternatively the invoice can be generated from the 3rd Party Charge Management Menu option. Selection is against each Charge table for the specific client.
 - 9.3. Once the invoice has been generated, the details of that invoice can be viewed by taking option 7=invoice details.
 - 9.4. The invoice cannot be reversed. If an error has been made in the initial setup and the invoice is incorrect, a credit note will need to be generated in the claims module.

Other Control Files affecting the processing:

TMSPS/CALM	Calculation method *SYSTEM*	*SYSTEM*
TMSPS/CAMD	Charge accumulative method *SYSTEM*	*SYSTEM*
TMSPS/CBSE1	Transactional charge basis *SYSTEM*	*SYSTEM*
TMSPS/CBSE2	Location charge basis *SYSTEM*	*SYSTEM*
TMSPS/CCTBL	Charge/Cost table	
TMSPS/CSRV	Charge services	
TMSPS/TGC	Transaction group code	

Examples

This section illustrates examples concerning:

[Example 1: Add a Client/Item Hierarchy Definition](#)

[Example 2: Maintain Client/Item Hierarchy Definition](#)

[Example 3: Copy Client/Item Hierarchy Definition](#)

[Example 4: Delete Client/Item Hierarchy Definition](#)

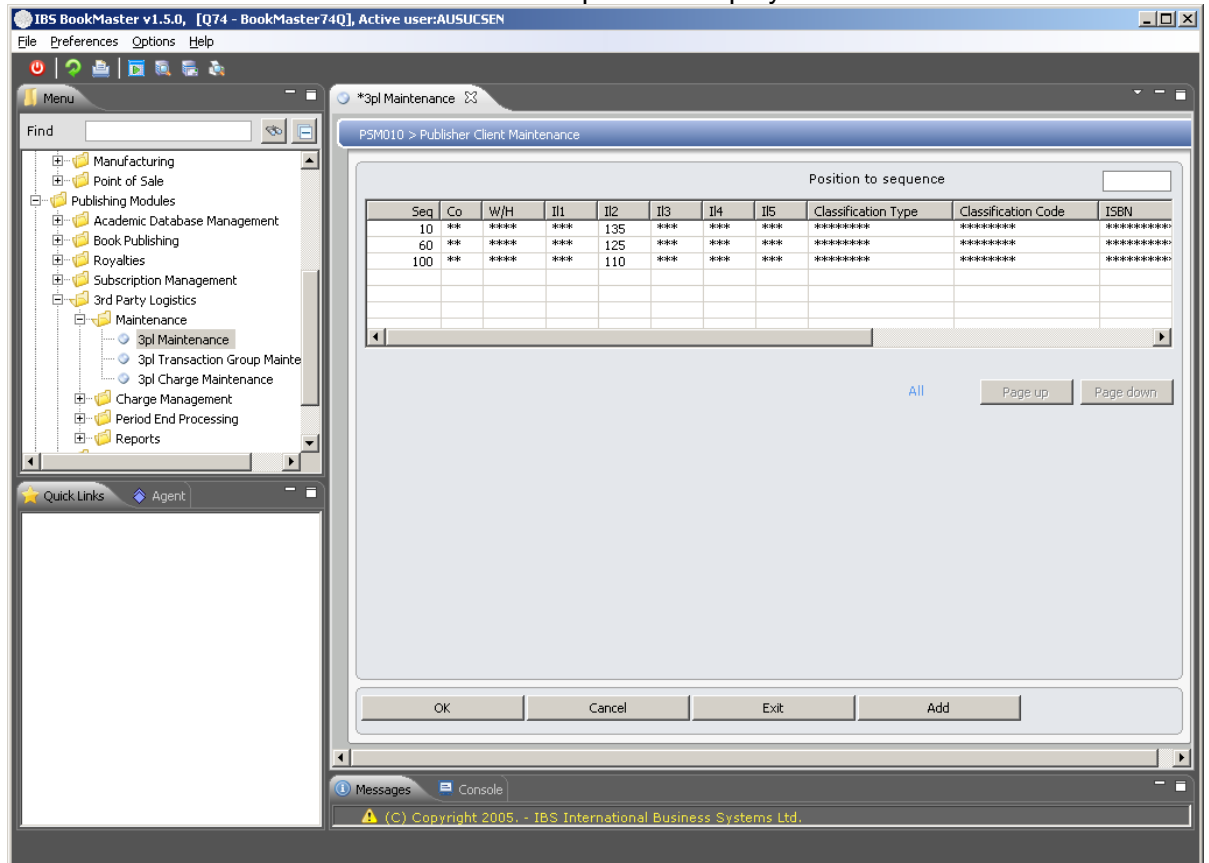
[Example 5: Display Client/Item Hierarchy Definition](#)

Example 1: Add a Client/Item Hierarchy Definition

This example describes how to add a client/item hierarchy definition.

1. Select option **3pl Maintenance** from Publishing Modules>3rd Party Logistics>Maintenance menu.

PSM010 Publisher Client Maintenance main panel is displayed.



Options

Change

Access Publisher Client Maintenance in change mode to change the details of client/item hierarchy definition.

Copy

Access Publisher Client Maintenance in copy mode to copy the existing details regarding client/item hierarchy definition.

Delete

Access Publisher Client Maintenance in delete mode to delete the details regarding client/item hierarchy definition.

Display

Access Publisher Client Maintenance in inquiry mode to inquire on the details regarding client/item hierarchy definition.

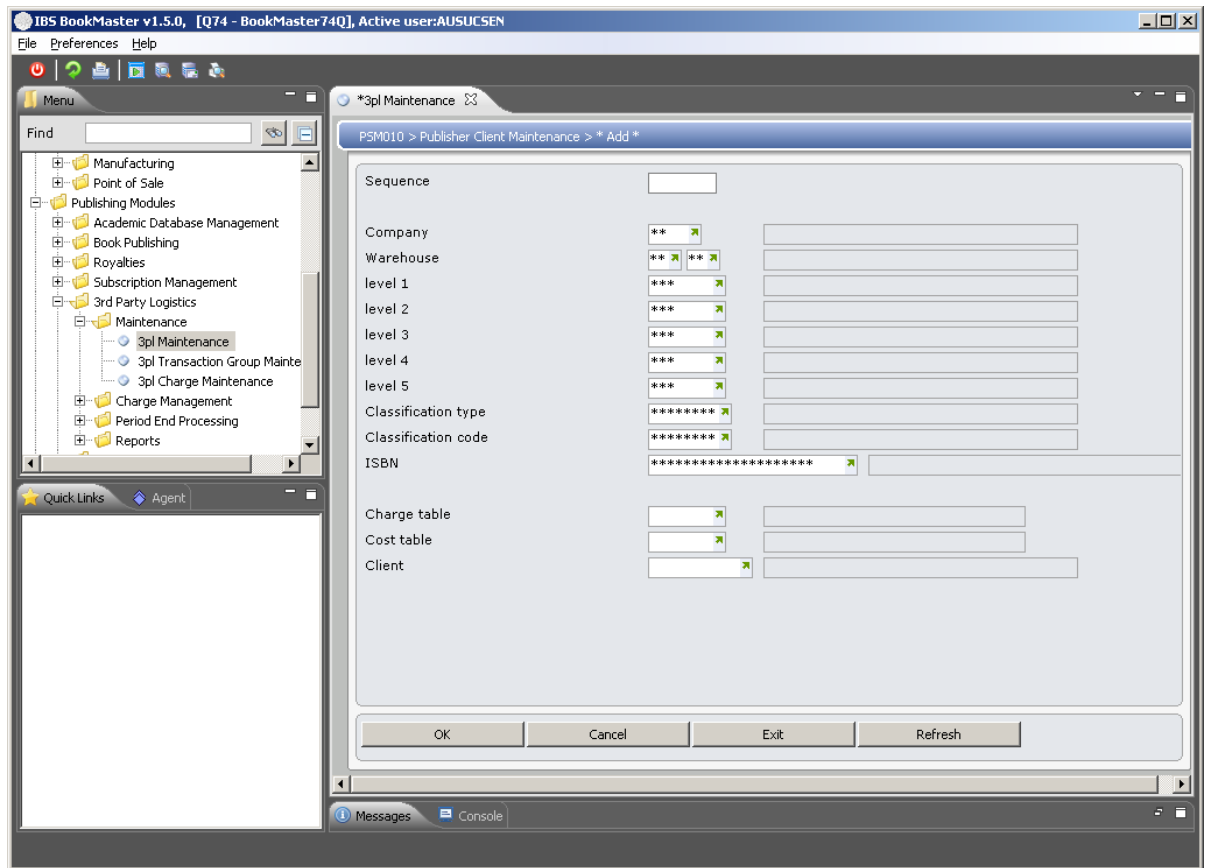
Functions

Add

Access Publisher Client Maintenance in add mode to add the client/item hierarchy definition.

2. Click **Add**.

PSM010 Publisher Client Maintenance panel is displayed in add mode.



Relevant Fields

Sequence

This is the sequence in which this definition must be applied. In the case of multiple definitions per client, the exceptions must be sequenced before the general rule.

Company

This number is used to uniquely identify a company to the system.

Warehouse

Select a valid warehouse.

Level 1-5

These Level codes form part of the Title classification hierarchy. This code is also referred to as the Title Class. There are 5 level hierarchy codes in the Title Masterfile but not all levels have to be used.

Indicate which Level codes identify the products belonging to the client which are to be subjected to service charges. Asterisks (*) indicate all Level 1 codes are to be included.

Classification type

Title can be categorized into several Classification Types. Asterisks (*) indicate that all Classification Types are to be subjected to charges.

Classification code

Once a Classification Type has been selected, an individual code belonging to the Type is selected. Search for a list of valid codes for the specified Classification Type.

Asterisks (*) indicate that all Classification codes in the Classification Type are to be subjected to charges.

ISBN

Select the Titles to be included or excluded in this definition.

Charge table

This is the Charge Table code to be used for the range of titles nominated for a client. Charge Tables are user defined and are linked to a Source of Transaction and a Type of Sale.

The Source of Transaction and Type of Sale assist in identifying the final invoice in the Sales Analysis.

Cost table

This is the Cost Table code to be used for the range of titles nominated for a client. Cost Tables are user defined and are linked to a Source of Transaction and a Type of Sale. This source of Transaction and Type of Sale assist in identifying the final invoice in the Sale Analysis.

Client

In 3PL Maintenance this Client is established in the Distribution Customer Masterfile.
In 3PL Management Client Number (Customer Account Number) and name are displayed for those accounts which have had charges calculated in the period selected.

3. Key in required fields and click **OK**.

A client/item hierarchy definition is added.

Example 2: Maintain Client/Item Hierarchy Definition

This example describes how to change client/item hierarchy definition.

1. Repeat step 1 as in [Example 1: Add a Client/Item Hierarchy Definition](#)
2. Select a record and click **Change**.

PSM010 Publisher Client Maintenance panel is displayed in maintenance mode.

3. Make required changes and click **OK**.

Record gets maintained.

Example 3: Copy Client/Item Hierarchy Definition

This example describes how to copy existing Client/Item Hierarchy Definition.

1. Repeat step 1 as in [Example 1: Add a Client/Item Hierarchy Definition](#)
2. Select a record and click **Copy**.

PSM010 Publisher Client Maintenance panel is displayed in copy mode.

3. Key in required fields and click **OK**.

Existing record is copied in new record.

Example 4: Delete Client/Item Hierarchy Definition

This example describes how to delete Client/Item Hierarchy Definition.

1. Repeat step 1 as in [Example 1: Add a Client/Item Hierarchy Definition](#)
2. Select a record and click **Delete**.

PSM010 Publisher Client Maintenance panel is displayed in delete mode.

3. Click **OK** to confirm deletion.

Record is deleted.

Example 5: Display Client/Item Hierarchy Definition

This example describes how to display Client/Item Hierarchy Definition.

1. Repeat step 1 as in [Example 1: Add a Client/Item Hierarchy Definition](#)
2. Select a record and click **Display**.

PSM010 Publisher Client Maintenance panel is displayed in inquiry mode.