

---

# DSW015 Work with ISTC Contributor

---

<i>Overview</i>	A title (ISBN) can have multiple works allocated against it for example an album with many songs. Each of these works could have one or more contributors e.g. singer, writer etc. Once a work is allocated to a title, contributors can be added for that work. Work with ISTC Contributor is accessed from Works Allocation panel.
<i>Purpose</i>	This panel allows you to: Add contributors to works allocated to a Title.

---

## Examples

This section illustrates examples concerning:

[Example 1: Add Contributors to a Title](#)

---

### Example 1: Add Contributors to a Title

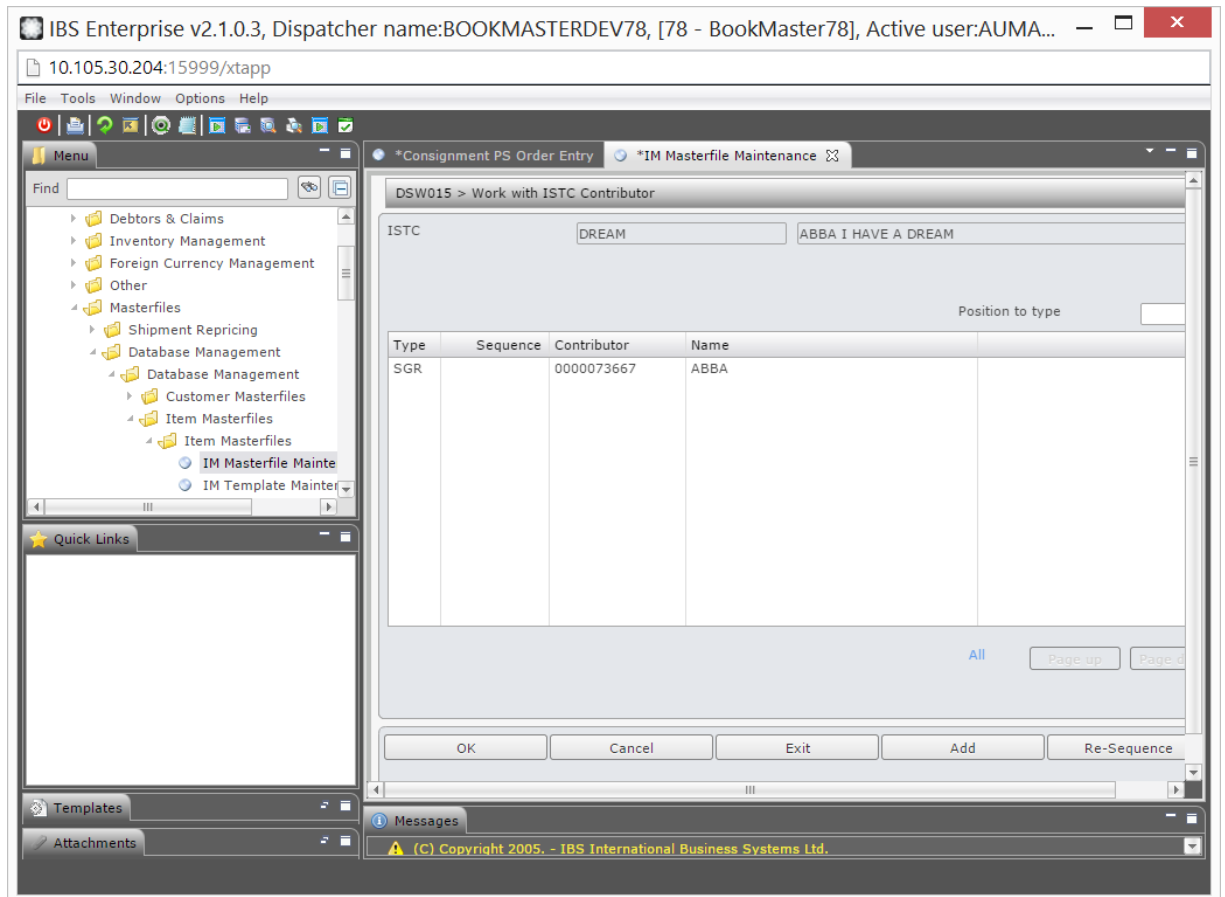
This example describes how to allocate works to a title.

1. Select menu **IM Item Masterfile Maintenance** from Base Modules > Distribution > Masterfiles > Database Management > Database Management > Item Masterfiles > Item Masterfiles.
2. Select a title and the option **Works**.
3. Click OK to continue.

**DSW025 Work with Works Allocation panel is displayed.**

4. Select the work to add contributors to and click option **Contrib**.

**DSW015 Work with ISTC Contributor panel is displayed.**



### Relevant fields

ISTC

ISTC code for the work.

Type

Contributor type as defined in control file TMSDS/IM-CT.

Contributor

Contact ID of the contributor.

Name

Full name of the contributor.

### Options

Contributor

This will access CRW055 Work with Contact to display the details of the contributor.

5. Click Add to add a contributor.

**DSW015 Work with ISTC Contributor** panel is displayed in Add mode.

6. Enter the contributor details and click OK to save the record.