
DSW010 Work with Credit Dissection

Overview

Work with Credit Dissection allows you upload credit limits by dissection for billing accounts that do not have any credit limit. Only users who are configured to access this option will be allowed to upload/update this table.

Explanation

Customers, with billing accounts that do not have any credit limit can be setup to use credit by dissection whereby the business can decide how much credit risk they are prepared to carry in order to continue supplying the customer. If the overall credit limit on the billing account is changed to non-zero and the credit limit dissection exists the system will give a warning, and if confirmed the existing credit limit dissection will be deleted.

Examples

This section illustrates examples concerning:

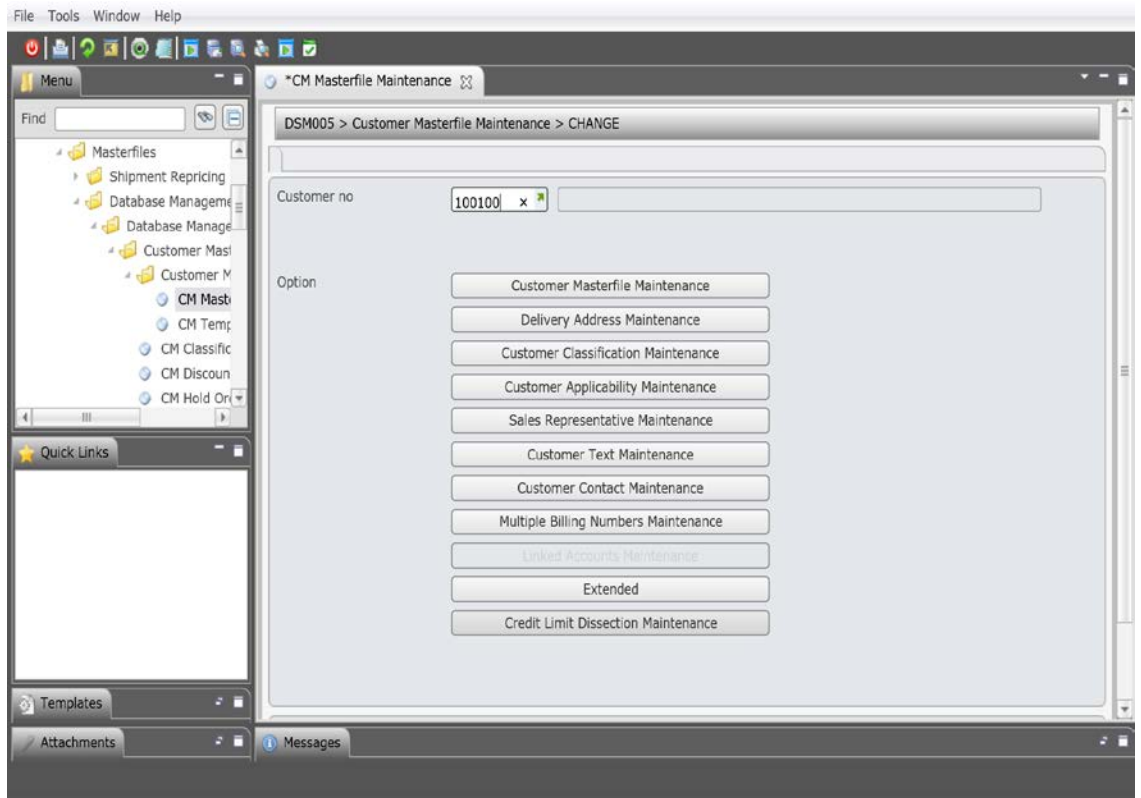
[Example 1: Add/update Credit by Dissection](#)

Example 1: Add/Update Credit by Dissection

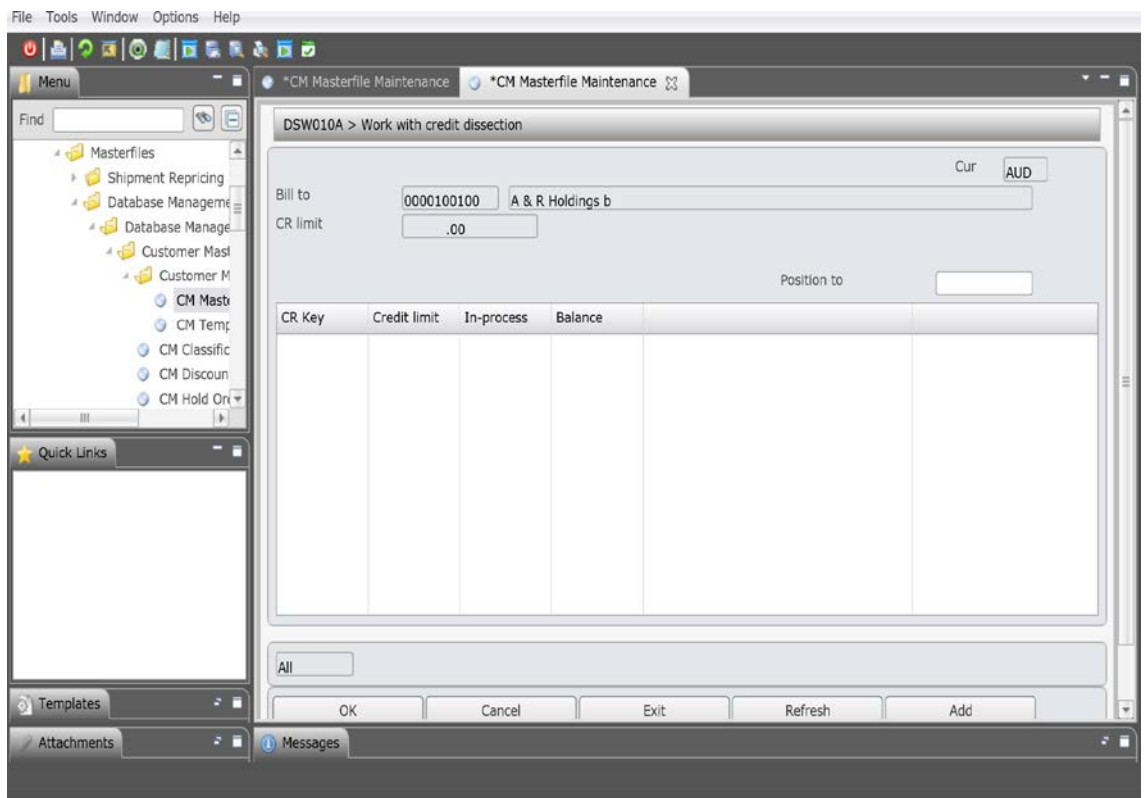
This example describes how to add or update credit by dissection.

1. Select option **CM Masterfile Maintenance** from Base Modules>Distribution>Masterfiles>Database Management>Database Management>Customer Masterfiles>Customer Masterfiles.

DSM005 – Customer Masterfile Maintenance main panel is displayed.



2. Specify an existing customer and click option Credit Limit Dissection Maintenance.
DSW010 – Work with Credit Dissection main panel is displayed.



Functions

Add

Allows you to add credit limits by credit dissection key.

Options

Detail

Allows user to view the details of an existing credit dissection entry and change the credit limit.

Copy

Allows user to copy an existing credit dissection entry to a new entry. Once copied change the credit key.

Delete

Use this option to delete the selected credit dissection entry. The entry will be deleted if it's not being used.

Relevant Fields

CR Key

This is the credit key used to dissect the credit limit by. The valid credit key values are defined in TMSAR/CB-KEY.

Credit limit

Amount of credit risk by dissection the business is prepared to take in order to supply the customer.

In-process

The total amount of all the orders in the system that has not been invoiced yet. This would include pending orders that are yet to be approved.

Balance

Balance is the amount of credit taken up by the customer. This would include invoices that are yet to be paid, once paid the credit balance would be reduced by the payment amount.

3. Click Add

The screenshot shows a software window titled '*CM Masterfile Maintenance' with a sub-header 'DSW010B > Credit Dissection > * Add *'. The window contains several input fields: 'Bill to' (0000100100, A & R Holdings b), 'Credit key' (BWN, BROWN GOODS), 'CR Limit' (2,500.00), 'In-process' (.00), and 'Balance' (.00). The currency is set to AUD. The left sidebar shows a tree view with 'CM Masterfile Maintenance' selected. The bottom status bar shows 'Messages' and a yellow warning icon.

4. Enter the credit key and the credit limit and press Enter to confirm. The dissected credit limit will be added for the selected billing account.