

---

# DSR443 Customer Label Print

---

<i>Overview</i>	<p>The customer label print program prints 3 labels across. The labels to be printed can be selected based on the following selection criteria:</p> <ul style="list-style-type: none"><li>One customer account or all accounts</li><li>Debtors Classification</li><li>Branch</li><li>Customer Classifications</li><li>Range of Discount Classification</li></ul>
-----------------	--

---

## Follow up

---

### Printouts

This is printout program.

Selection of the following is required.

- One customer account or all accounts
- Debtors Classification
- Branch
- Customer Classifications
- Range of Discount Classifications
- Stopped accounts
- Closed accounts

---

## Examples

This section illustrates examples concerning:

[Example 1: Print Customer labels](#)

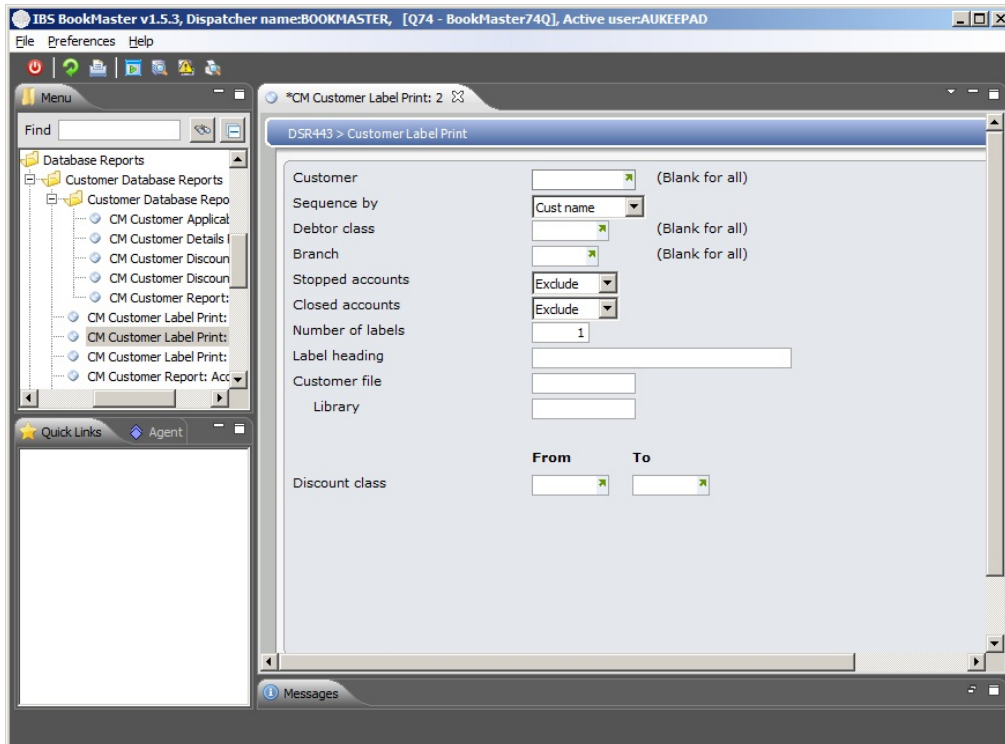
---

### Example 1: Print Customer labels

This example describes how to print customer labels.

1. Select option **CM Customer Label Print: 2** from Base Modules>Distribution>Masterfiles>Database Reports>Database Reports>Customer Database Reports> Customer Database Reports.

**DSR443 Customer Label Print** main panel is displayed.



2. Enter the details and click **OK** to produce the report.