
DSM045 Item Warehouse Details Maintenance

<i>Overview</i>	This program allows maintenance of item masterfile fields without having to access the Item Masterfile Maintenance program. On entry of the ISBN, the title's carton quantity, volumetric weight, volume, and physical dimensions are displayed and can be maintained as desired.
<i>Purpose</i>	This panel allows you to: Maintain item details

Examples

This section illustrates examples concerning:

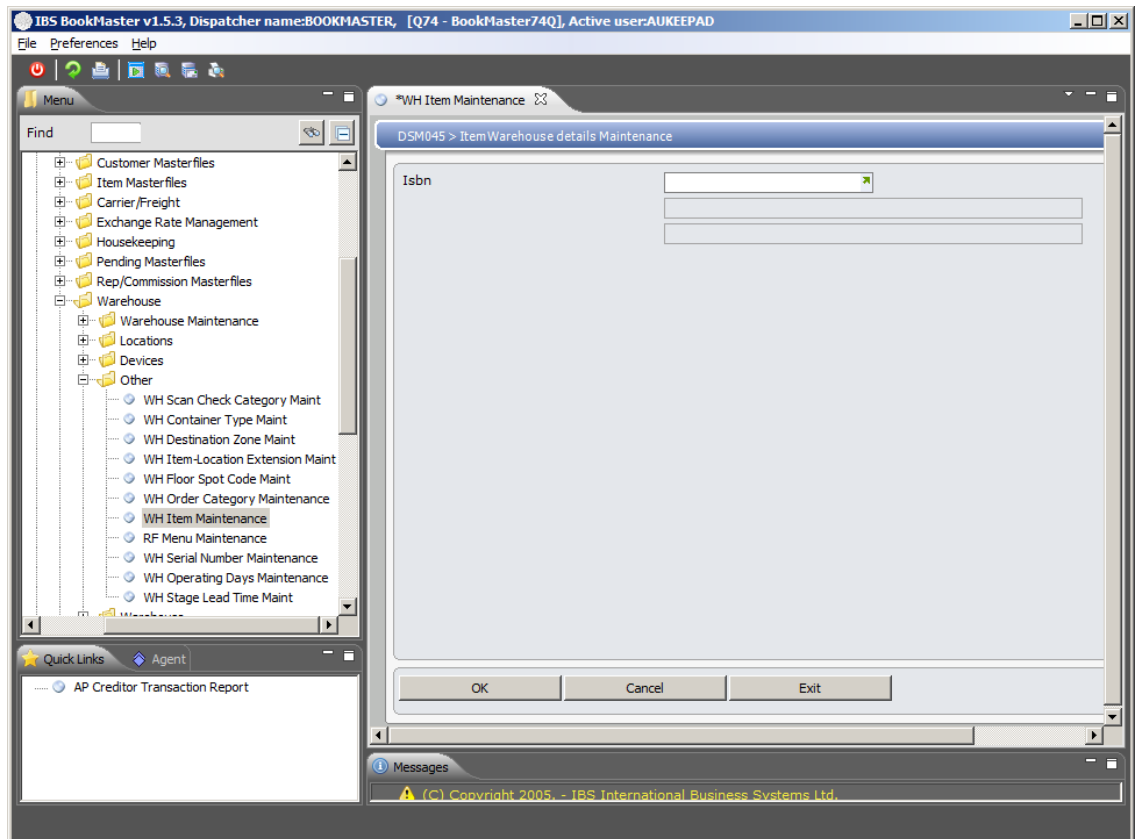
[Example 1: Maintenance of an item's details.](#)

Example 1: Maintenance of an item's details

This example describes how to add an item's details.

1. Select option **WH Item Maintenance** from Base Modules>Distribution>Masterfiles>Database Management>Database Management>Warehouse>Other menu.

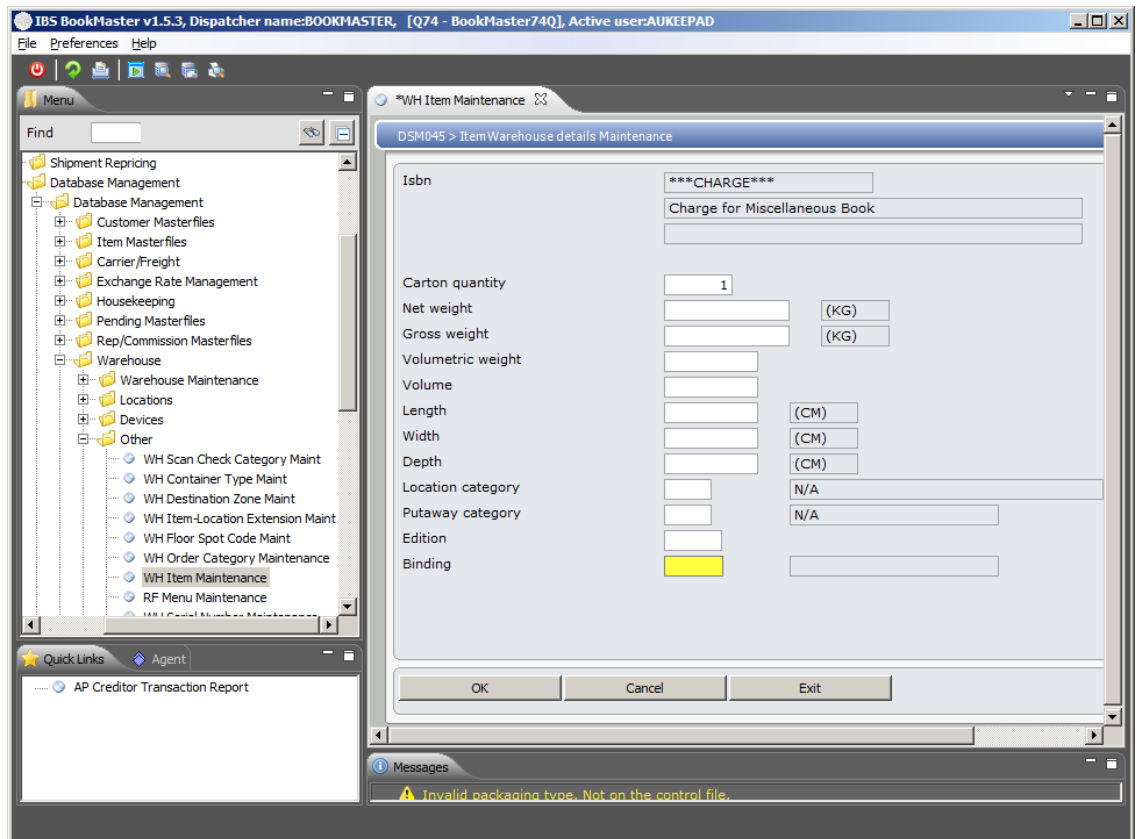
DSM045 Item Warehouse details maintenance selection panel is displayed.



Relevant Fields

- Item no.** The number is alphanumeric and is a Product code or Item code or a Title or International Standard Book Number (ISBN) that uniquely identifies an inventory item in the system.
- Item Description** This is the name or description of the selected item

2. Select an item and click **OK**.



Relevant Fields

Carton quantity

This carton quantity for the title, in this location, affects replenishments and defaults to one but can be changed. When a replenishment is performed, it is preferable not to split a carton in a bulk area so movement rules are setup to round to carton quantities. When stock is received the carton quantity is entered. This is normally left as 1 (that is loose units). The key to stock records is ISBN, carton quantity, item extension and location. Thus you can have multiple records for the same title and location for different carton sizes. Normal picking rules for forward shelves allow the system to split a carton to take whatever individual units are required, with no manual stock adjustments necessary. The easiest way to adjust in-stock carton quantities is with Ad-Hoc Warehouse Movements.

Net weight

The net weight is used by the Standard Delivery Charge Table to calculate the applicable delivery charge. Delivery charges are defined by carrier with the option to include criteria for several customers, such as branch and postcode.

The title weight and dimension formats on the Title Masterfile (DSIM00P) are converted to the format displayed on the screen and then converted back again.

Entry of the net weight is measured in the format on TMSWH/CNV-DIMN.

Gross weight

This is the physical gross weight of the title inclusive of packaging. Used if RF picking is operational in the

warehouse.

The title weight and dimension formats on the Title Masterfile (DSIM00P) are converted to the format displayed on the screen and then converted back again.

Entry of the net weight is measured in the format on TMSWH/CNV-DIMN.

Volumetric weight

This is the weight measured by volume and is used in the calculation of freight. It is also used in landed cost calculations.

Volume

This is the physical volume of the packaged product. Typically this is used in a warehouse that is location controlled to help determine the size of storage space needed for this product.

Length

This is the physical length of the title, including packaging/binding, which is used when calculating location capacity in location controlled warehouses. Locations can be managed with an unlimited capacity therefore this field is optional.

The title weight and dimension formats on the Title Masterfile (DSIM00P) are converted to the format displayed on the screen and then converted back again.

Entry of the net weight is measured in the format on TMSWH/CNV-DIMN.

Width

This is the physical width of the title, including packaging/binding, which is used when calculating location capacity in location controlled warehouses. Locations can be managed with an unlimited capacity therefore this field is optional.

Entry of the net weight is measured in the format on TMSWH/CNV-DIMN.

Depth

This is the physical depth of the title, including packaging/binding, which is used when calculating location capacity in location controlled warehouses. Locations can be managed with an unlimited capacity therefore this field is optional.

Entry of the net weight is measured in the format on TMSWH/CNV-DIMN.

Location category

A Location Category identifies the physical location (example pallet or non-pallet etc.) of stock in a warehouse. This is used to indicate from where stock is to be picked in the warehouse.

Putaway category

This Putaway Category is used with the warehousing setup functions for putaway and picking.

A putaway category is assigned to every title and every location in warehouses under location control. The putaway logic uses this category to match titles with their corresponding locations within a zone. That is, where possible a title with a putaway category of 100 is putaway to a

location with a putaway category of 100. If no location is suitable with this category, then locations in the next highest putaway category (say 110) are interrogated.

**Release
number**

The Edition assigned to this title's release. This is for information only and would only be used if a product is re-released.

Packaging

Indicates the type of binding used for this title for information purposes only.

3. Key in the required fields and click **OK**. This changes the selected item's details.

Cross Reference

- DSE046 - Purchase receipt entry by PO number