
DSM004 Linked Account Maintenance

Overview

This program allows you to link accounts.

For example, linked accounts are used for the management of bursary accounts. Each student represents an account with a credit limit to the value of the bursary. These student accounts are then linked to a central bursary billing account. The students may make purchases of up to the value of their individual credit limit.

The bursary account must be set up on the Customer Masterfile as a Billing account linking this account to each student via the Linked Accounts Maintenance option.

Examples

This section illustrates examples concerning:

[Example 1: To link an account](#)

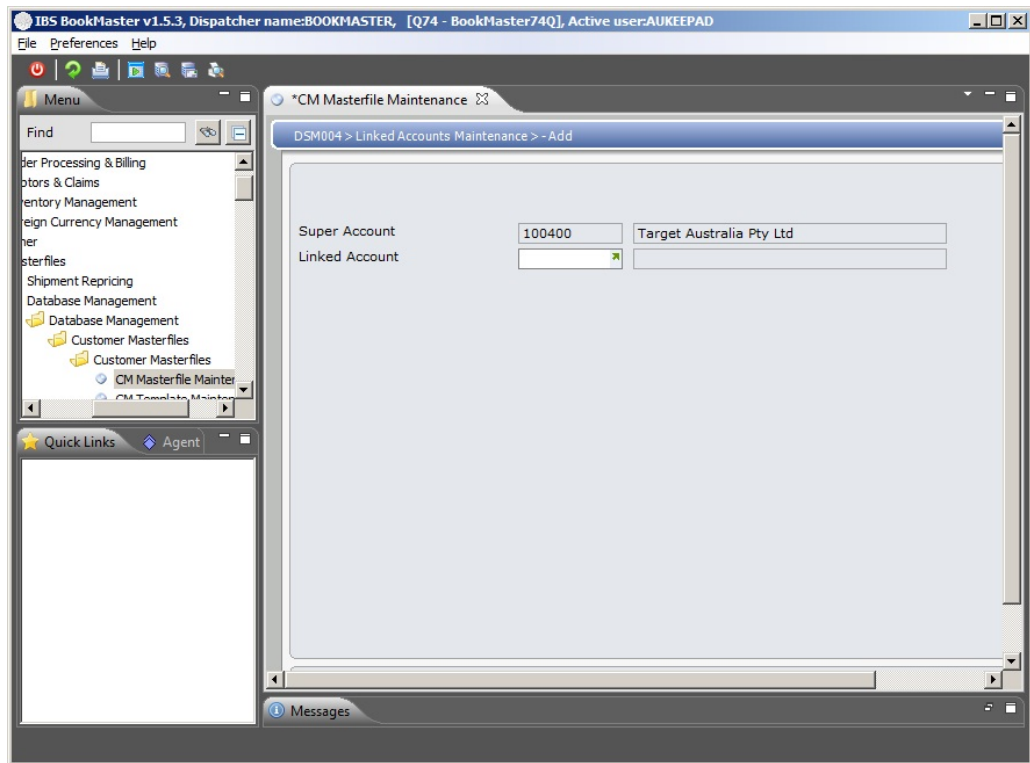
[Example 2: To unlink an account](#)

Example 1: To link an account

This example describes how to link an account to a customer account.

1. Select option **CM Masterfile Maintenance** from Base Modules>Distribution>Masterfiles>Database Management>Database Management>Customer Masterfiles> Customer Masterfiles menu.

DSM005 Customer Masterfile Maintenance CHANGE main panel is displayed.



Relevant fields

Super account

This is the super account to which accounts are being linked.

Linked account

This is the account to be linked to a super account.

5. Press **<ENTER>**.

The specified account is now linked.

Example 2: To unlink an account

This example describes how to unlink an account.

1. Repeat steps 1 to 4 as in [Example 1: To link an account](#). The following panel is displayed.
2. Select the account you want to unlink and click the **Delete** option. The account is no longer linked.