

Control File Setup

TMSDS/ITF-MGT – Interface Management

The screenshot displays the 'Control File Maintenance' window for application TMSDS and key ITF-MGT. The window includes a menu on the left with options like 'Control File Maintenance', 'Control Number Maint', and 'Control file compariso'. The main area contains the following fields:

- Application: TMSDS
- Key: ITF-MGT
- Maximum rec: 1
- Allow Dup: 2
- Last change: 3/5/2009
- CONFDRP: CONFDRP
- Position to: [Empty field]

The text 'Interface independent of order queue? 1=yes, 2=No' is displayed above a table with one row containing the value 1. The table has a column header 'Sts'.

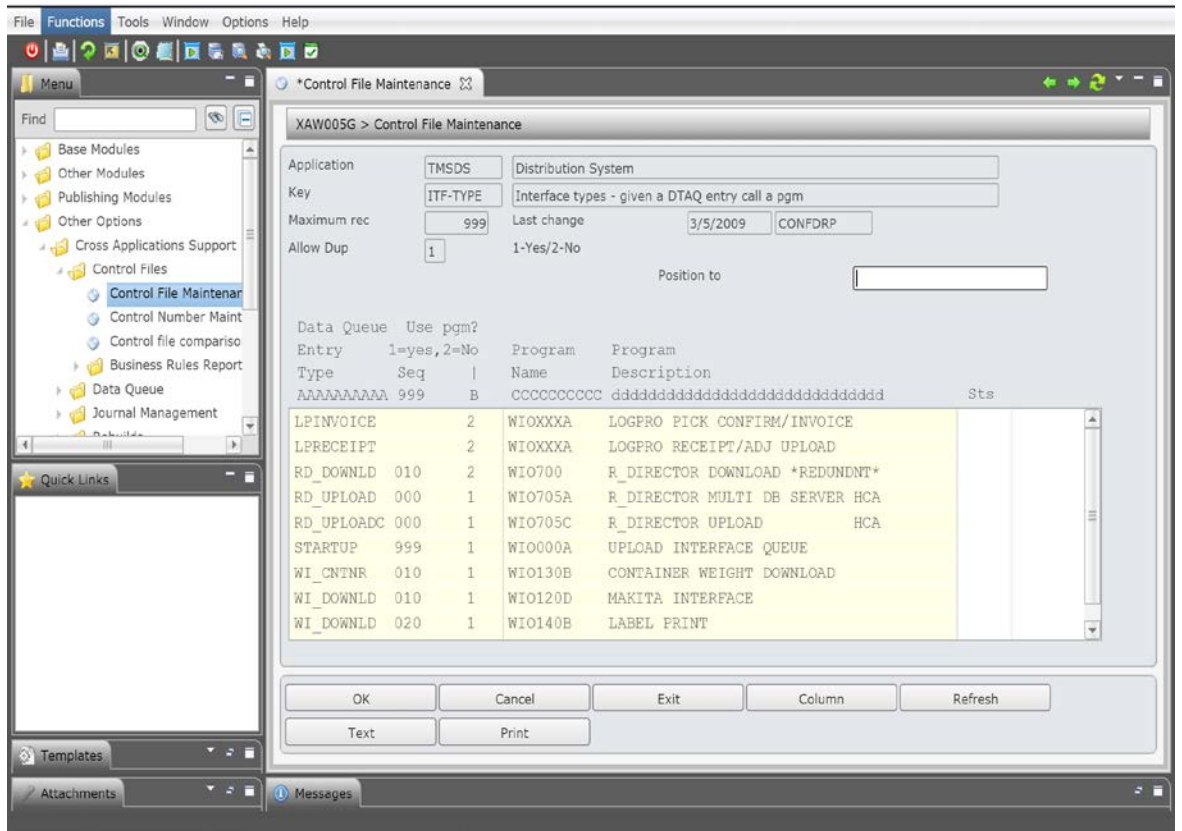
Sts
1

Buttons at the bottom include OK, Cancel, Exit, Column, Refresh, Text, and Print.

This control file determines whether the Interface Data Queue processor is managed via the Standard Data Queue processor (for order handling DSM000) or via its own management menu option (DSM012).

If the Standard Data Queue is chosen = 2, then the End of Day program DSCEODF will stop and start this interface queue.

TMSDS/ITF-TYPE - Interface types – given a DTAQ entry call a pgm

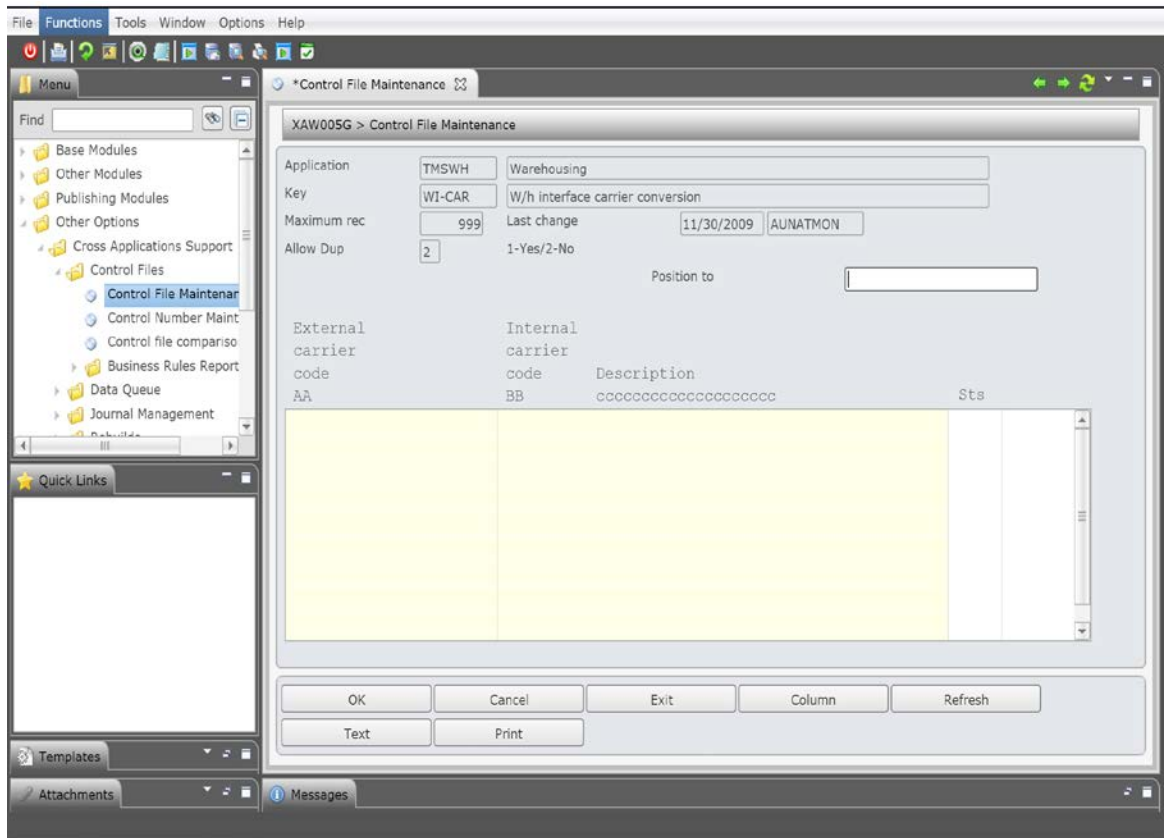


This control file provides a general purpose way of interfacing into Bookmaster. For every entry placed on a data queue the first 10 characters represent an 'Entry Type' and the background processor will call the corresponding programs.

An Entry Type may represent any type of data, e.g. a completed picking key as supplied by a third-party warehouse system, an electronic shipping advice from a supplier etc.

NB. This control file is completely user-defined and the programs defined are the sole responsibility of the user. As such, no recovery process is provided.

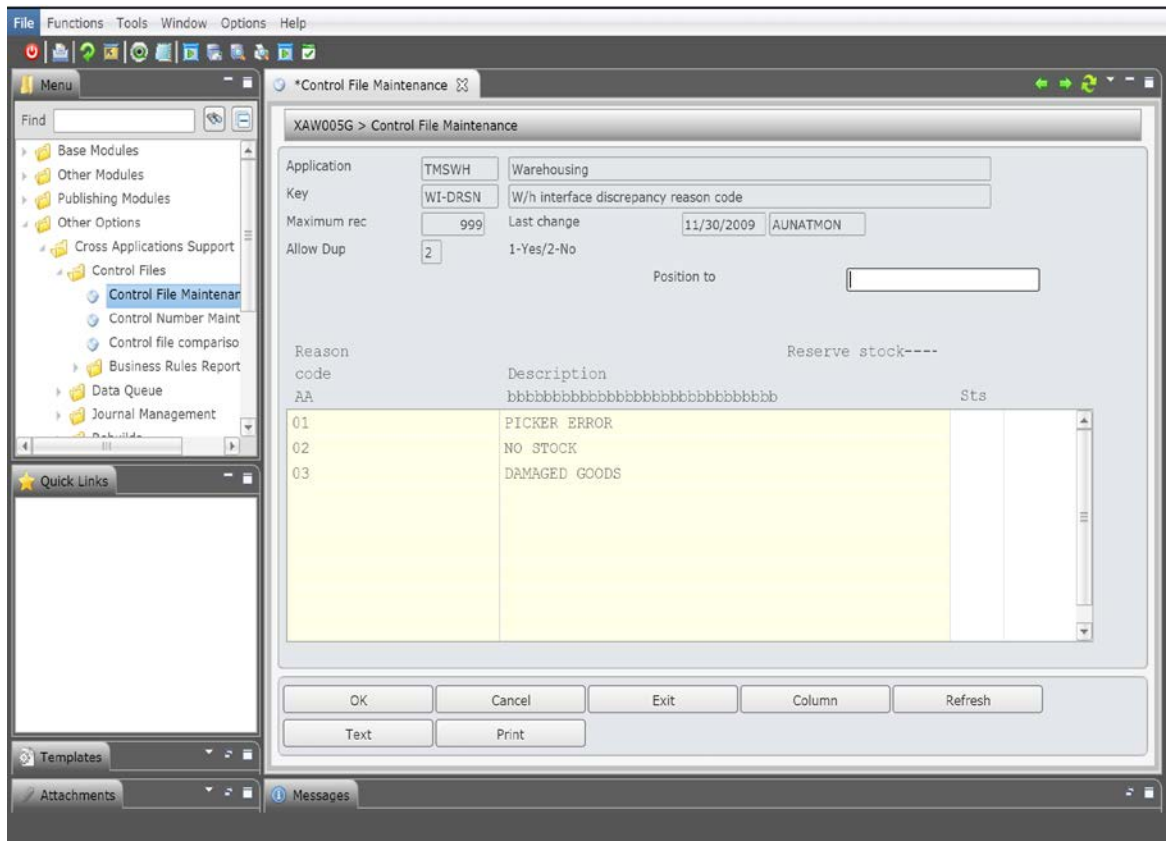
TMSWH/WI-CAR - W/h interface carrier conversion



This Control File is used to define the External Carrier code, which is to be sent to an external warehousing system. For example: Picking Slips and Orders.

The Internal Carrier code must be entered as well as the External Carrier code.

TMSWH/WI-DRSN - W/h interface discrepancy reason code

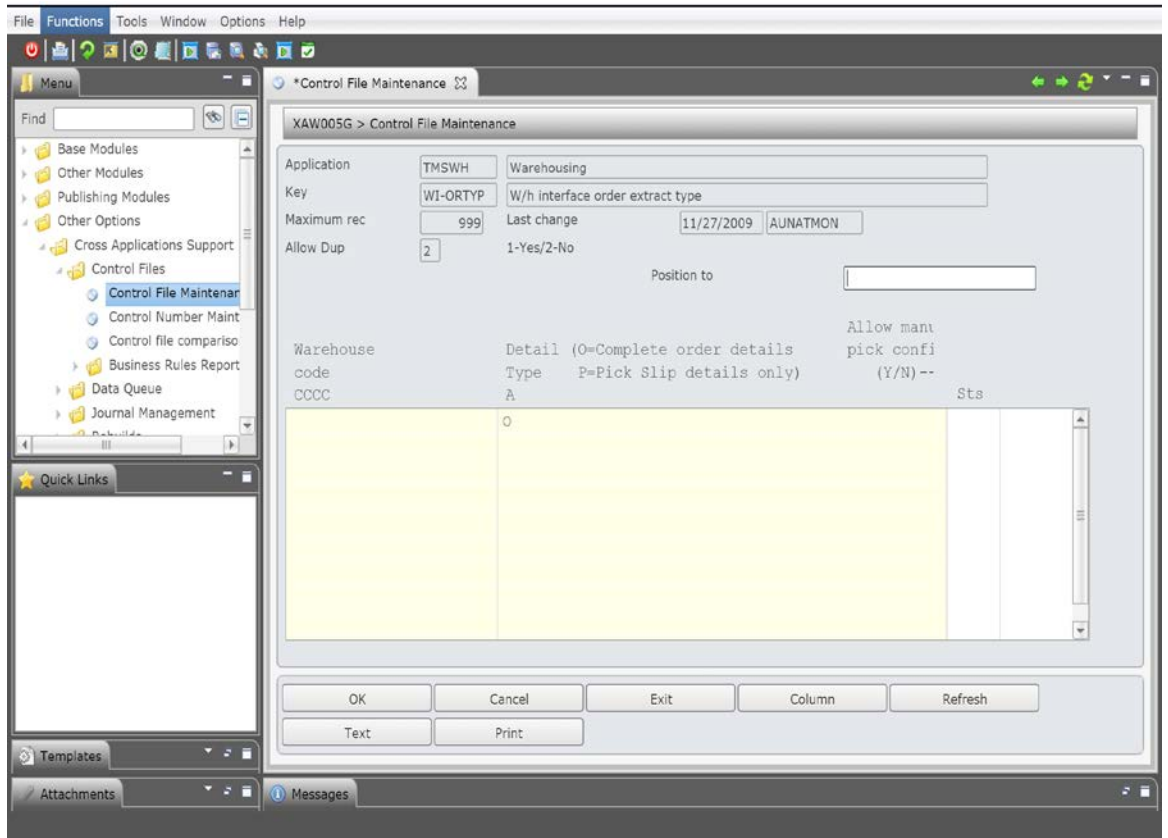


This Control File defines the Warehouse Interface discrepancy reason codes. You must define the reason code and its description. For example: 02 = No Stock.

The Reserve Stock field allows you to determine if you want to hold and reserve the remaining stock for discrepancy.

When pick slips are released to the warehouse, auto run can be enabled, which will automatically send the transactions to the warehouse interface files. Part of the auto run is assigning a device type (need to have category selection). This allows for different types of orders to be assigned to different device types. This control file determines which device type to use. If using multiple warehouses, different types of pick slips may be assigned to different warehouses. A device type that is set as "EXTERNAL" will identify it as being for external processing. Any pick slips that go to that device type will go to the external warehouse and populate the WI files.

TMSWH/WI-ORTYP - W/h interface order extract type



This Control File is used for the warehouse interface to determine the order extract type. Determines whether to send pick lines only or complete orders. Also determines if manual pick confirm is enabled. If enabled, a Bookmaster user could manually confirm the pick slips if there is a problem in the warehouse or with the file transfer. This could also be used to reject an order after it has been sent to the warehouse. If the order is to be rejected, the warehouse should not send back the order with zero pick qty. If they did, that would put all items on backorder.

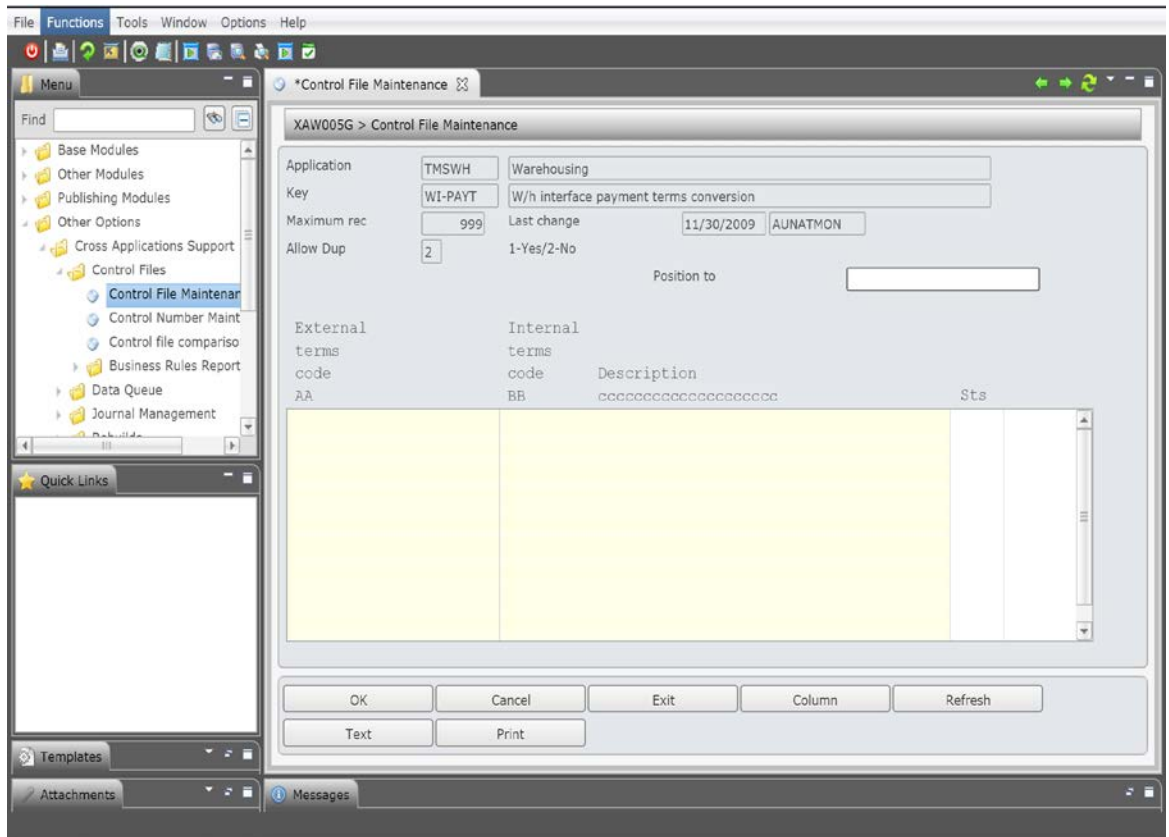
The Detail type can be one of the following:

= Complete Order Details. This includes orders showing backorder lines for the purpose of printing a complete invoice reflecting the original customer order. This is inclusive of picking slips.

P = Pick Slip details only. This does not include backorders. It allows you to send the picking slip details only.

Allow Manual Pick Confirm. This is used to determine if you want to allow to manually confirm pick slips even if it has gone to the external system. This should be flagged as N = No where the external system is allocating the invoice number to avoid two different invoice numbers in two different systems.

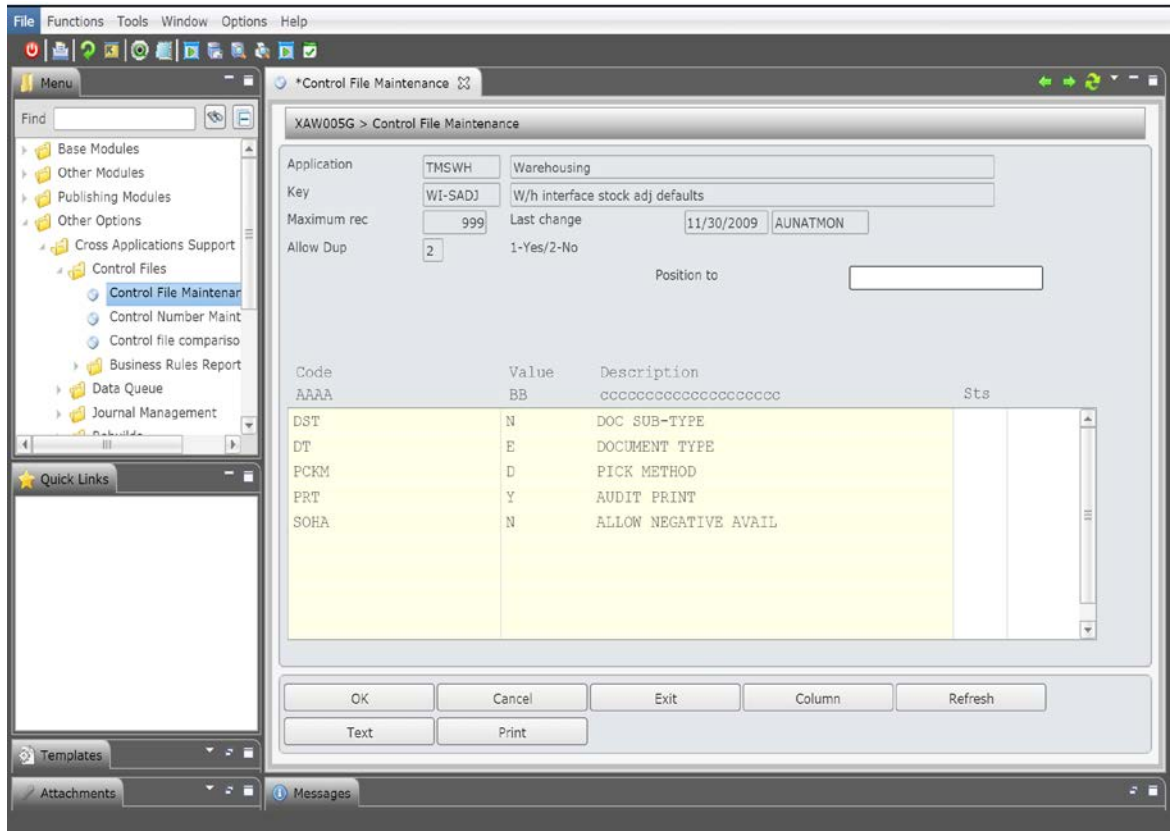
TMSWH/WI-PAYT - W/h interface payment terms conversion



This Control File is used to define the Payment Terms code which is to be sent to an external warehousing system.

The Internal payment terms code must be entered as well as the External payment terms code. For example: 90 days, 30 days.

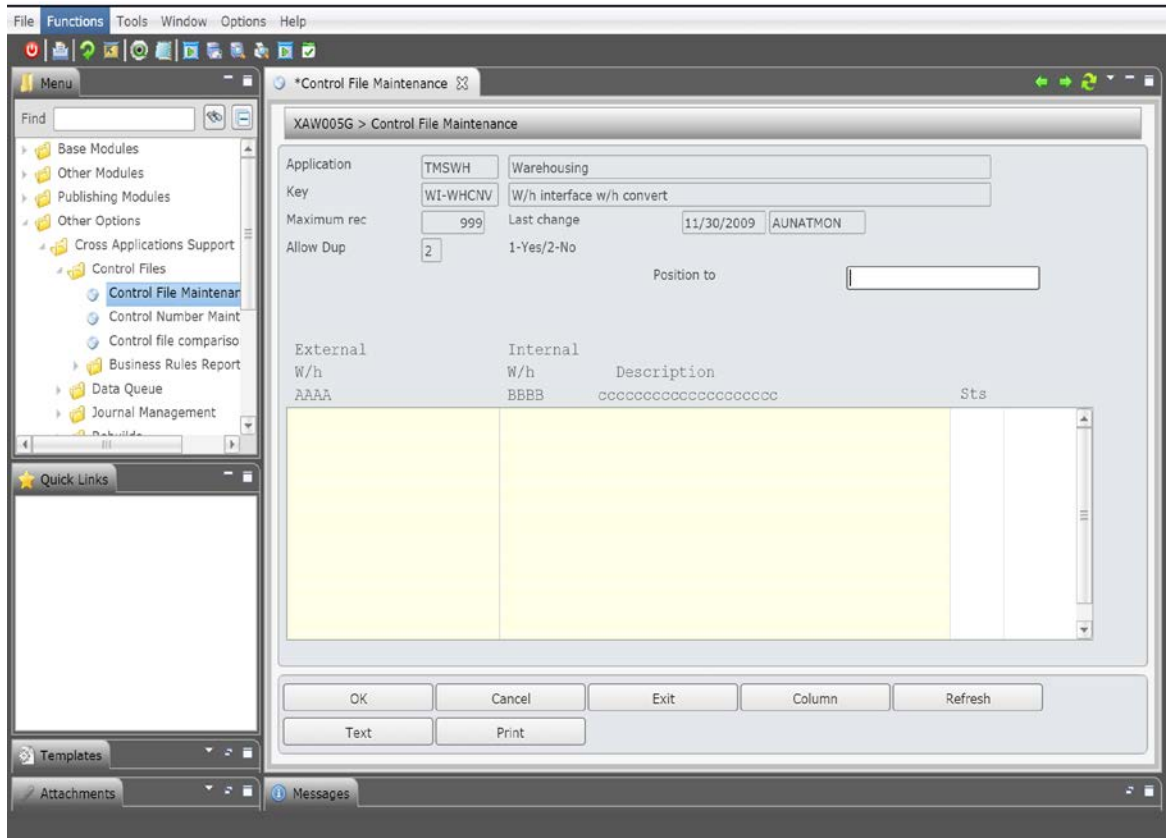
TMSWH/WI-SADJ - W/h interface stock adj defaults



This Control File holds the values necessary for the processing of Stock Adjustments from the External Warehouse.

Used by the stock adjustment process to run the standard Bookmaster Stock Adjustment program. Holds the default parameters for DSE010 (stock adjustment program).

TMSWH/WI-WHCNV - W/h interface w/h convert

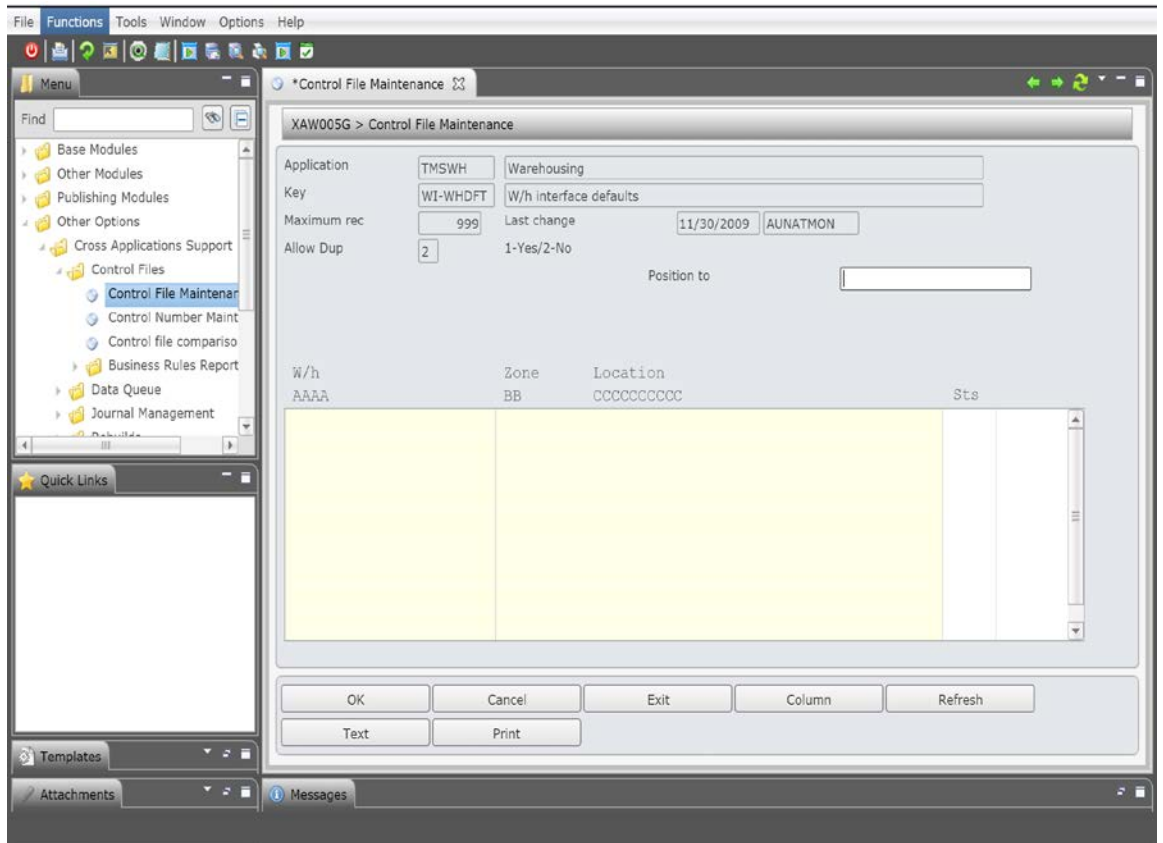


This Control File is used to define the External Warehouse code which is to be sent to an external warehousing system.

The Internal warehouse code must be entered as well as the external warehouse code.

Converts warehouse numbers from Bookmaster warehouse numbers to the external warehouse's numbers.

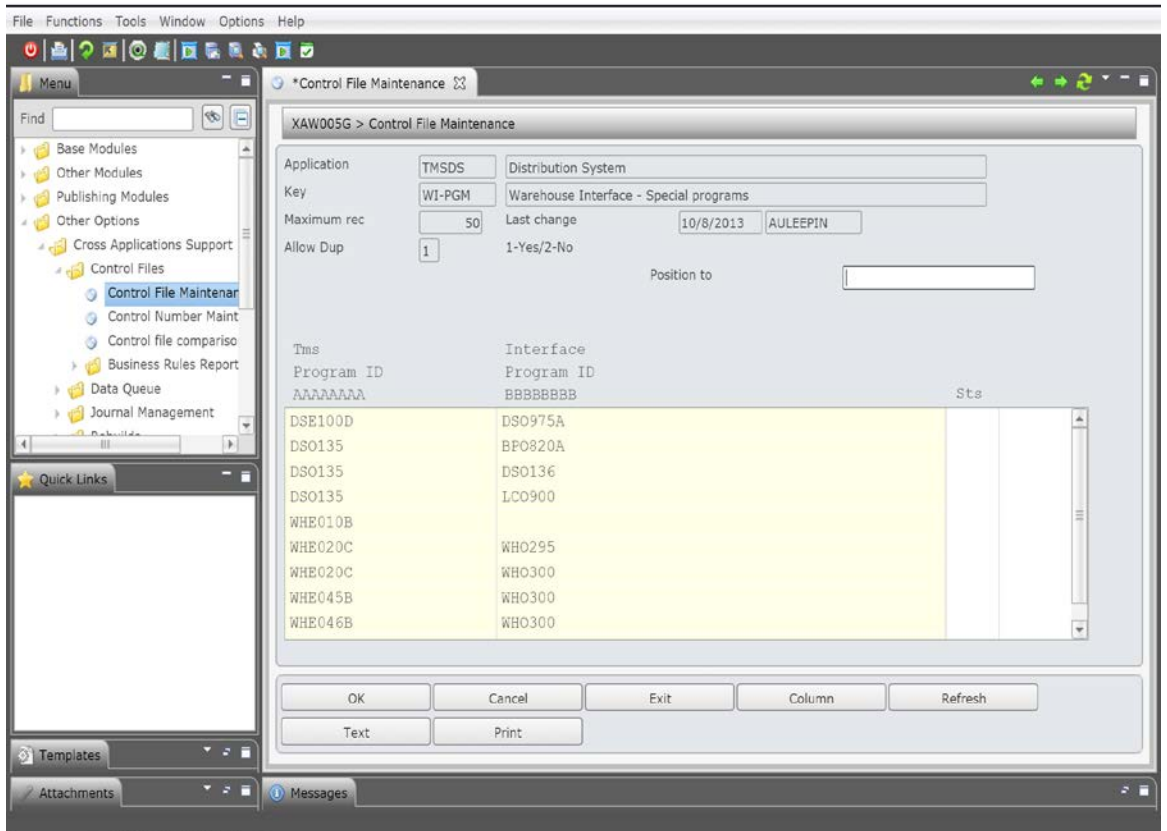
TMSWH/WI-WHDFT - W/h interface defaults



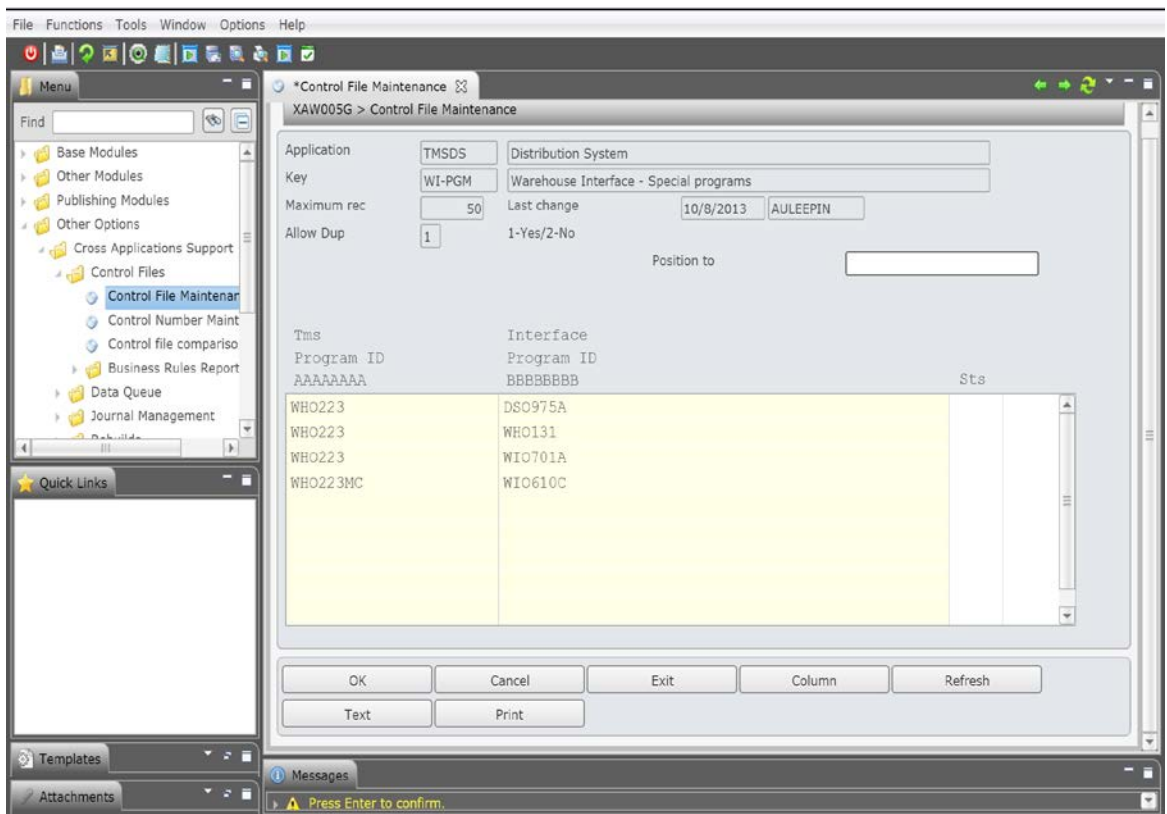
This Control File defines the Warehouse, Zone and Location in Bookmaster for the stock that is held in the external warehouse.

The external stock is held in the internal system.

TMSDS/WI-PGM - Warehouse Interface - Special programs



Page Down



This Control File defines any additional external processes that need to be run from within the normal background order processing function. Ensure that any new programs are added to this Control File.

If sending orders to the warehouse as part of the run process, then add the following. This only affects the orders that are sent to the warehouse, this does not send the other transactions:

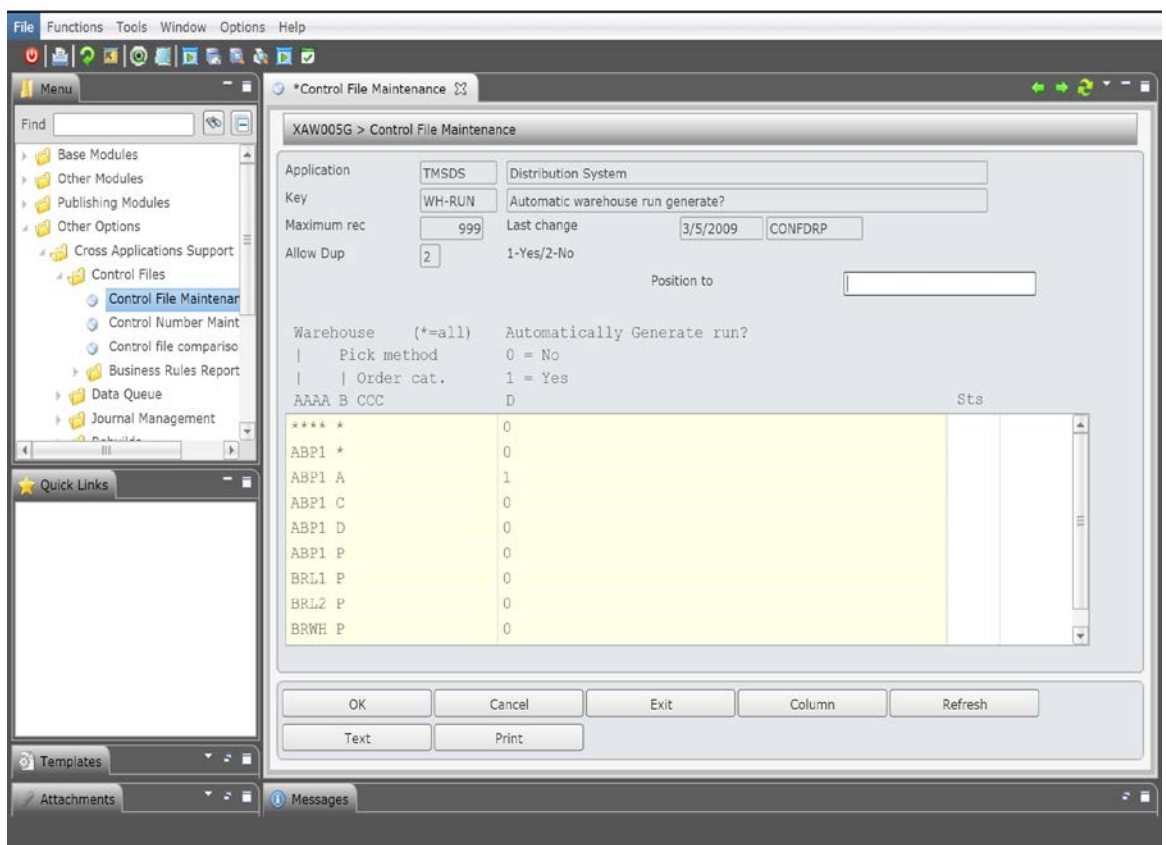
WHO210B WIO420C

WHO220 WIO420C

WHO225 WIO420C

This Control File can have the program calls to run the warehouse interface order extract at the time the w/h run is selected.

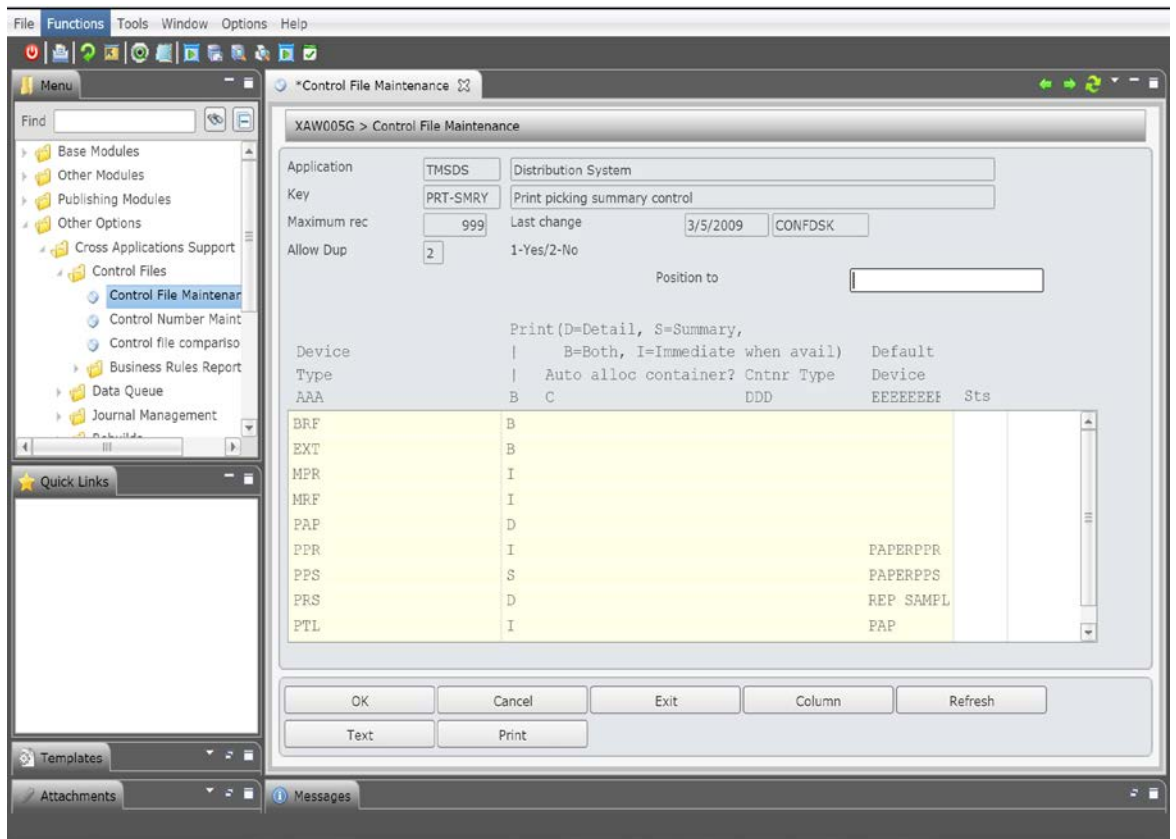
TMSDS/WH-RUN - Automatic warehouse run generate?



This Control File determines the pick method by warehouse, and whether the pick run should be automatically generated.

If this flag is set to Yes then Print error report only if error occurs. If an error occurs with the release of the run, then Yes will send it back to K status. If No, then the order returns to warehouse order categories.

TMSDS/PRT-SMRY - Print picking summary control



This Control File is used to record the external warehouse interface device type which comes from the WI-DEVTP control file for option "EXTERNAL".

Programs and Files

DSM012	Interface – Data Queue processor
DSO012	Interface – Data Queue processor
WIO400	W/h interface download Must schedule this program in order to have the warehouse interface transactions sent to the warehouse (pick slips, purchase orders, etc). This can be added to EOD or run as a scheduled job. Note: If adding to EOD, add to “extra programs” (DSCEODG). Data area: 1 st two characters control the current cycle number; last two digits are the maximum number of archive cycles. This is used if archiving. To have the maximum archiving, set to 0099 (00 to start at beginning, 99 to have 99 files of each file to be archived). If running once/day, should set as 0050 to hold 50 archive files. The archived files will have the same names as the WI files, with 01, 02, 03 etc as a suffix.
WIO410	External w/h customer master extract
WIO415	External w/h item master extract
WIO420	W/h interface p/slip extract
WIO425	W/h interface invoice extract
WIO430	Extract shipments for w/h interface
WIO440	W/h interface R/A extract
WIO450	W/h interface upload Call WIO450A at EOD to receive data back from the warehouse. Could call this right after calling WIO400A. If you want the EOD to record sales and generate invoices, this program must be called prior to EOD begin run. In this case, add to the DSCEODG program (extra jobs with processor). When the data comes in, the files will be cleared after WIO450 is run and after being archived. Another data area exists (WIO450) which archives incoming file details, similar to the data area for WIO400.
WIO460	W/h interface despatch confirmation
WIO465	W/h interface invoice despatch
WIO470	W/h interface shipment receipts
WIO475	W/h interface stock adj
WIO480	W/h interface intransit
WIO485	Claim/return validation and update
DSO820	Stock count upload

Files sent to the Warehouse

WICMC00P	External w/h customer changes
WICMO00P	Existing External w/h customer details
WIIMC00P	External w/h item changes
WIIMO00P	Existing External w/h item changes
WIORA00P	W/h interface order header
WIORB00P	W/h interface order details
WIORC00P	W/h interface order text
WISHA00P	W/h interface shipment – header
WISHB00P	W/h interface shipment – detail
WISHO00P	W/h interface shipment – existing details
WIRAA00P	Wh Interface R/A header download
WIRAB00P	Wh Interface R/A detail download

Files received from the Warehouse

WICLA00P	Claim/Return input file – header
WICLB00P	Claim/Return input file – detail
WIDPA00P	W/h interface despatch header
WIDPB00P	W/h interface despatch detail
WIDPC00P	W/h interface despatch cartons
WISAJ00P	Stock adjustment from external warehouse
WISHR00P	External w/h shipment receipts
WISRT00P	Stock in-transit receipt from external warehouse
WIINV00P	W/h interface invoices
WIERR00P	W/h interface error log