
CRO325 Rebuild Match Key

Overview

The Match Key Rebuild writes the key files to the Contact Match Key file. The fields that are used in the building of the duplicate detection process are system defined. Match keys are deleted if the Contact no longer exists.

Examples

This section illustrates examples concerning:

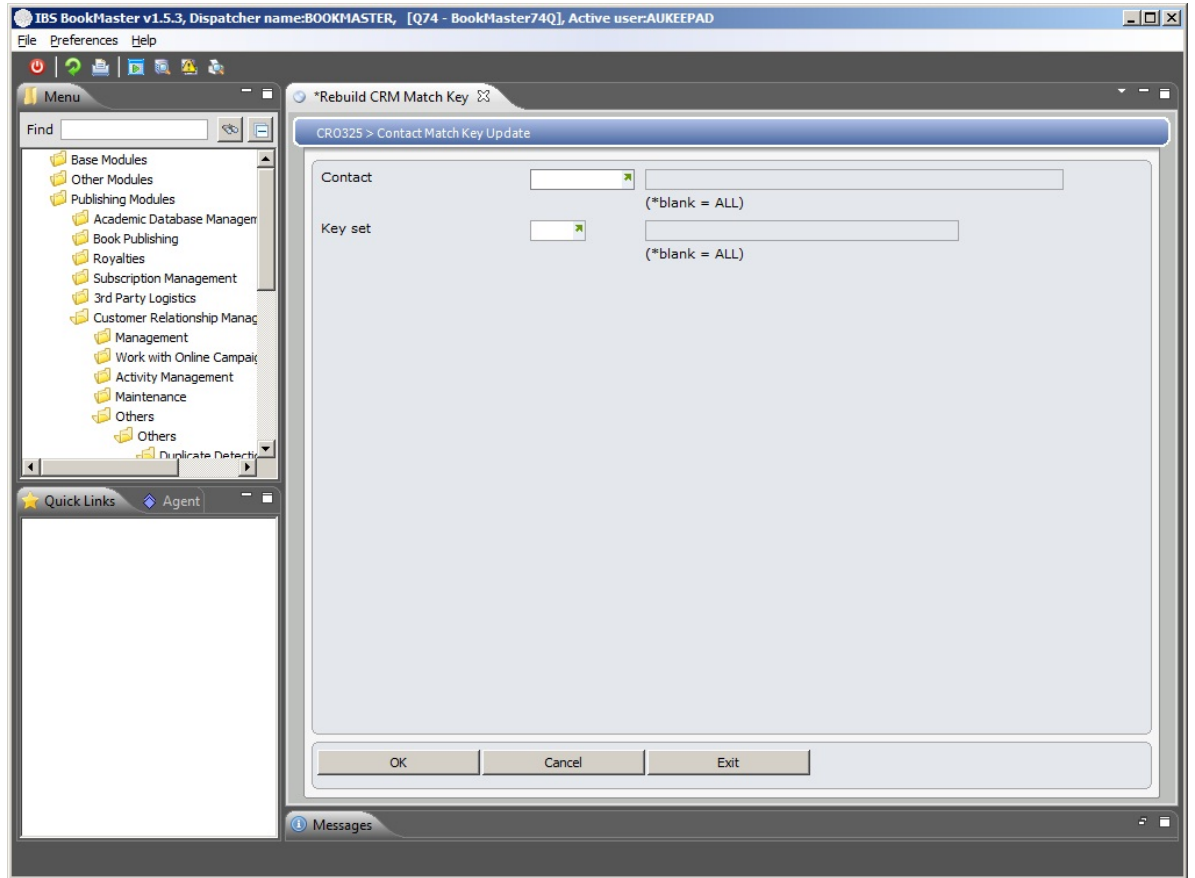
[Example 1: To run the match key rebuild](#)

Example 1: To run the match key rebuild

This example describes how to update a Match key.

1. Select option **Rebuild CRM Match Key** from Publishing Modules>Customer Relationship Management>CRM Other Maintenance>Duplicate Detection Rebuild menu.

CRO325 Contact Match Key Update main panel is displayed.



Relevant Fields

Contact

This ID is an identification given to the contact in the contact file.

Key set

When running the match key rebuild enter the key set for which you want to rebuild the match key or leave blank to select all key sets to rebuild. Key sets are established in Control File TMSCRM/NA-MTKH which is used in the build of match keys for a contact. When the contact is entered the relevant keys in the Control File are used in building the keys. Error Levels are used to determine if the errors are a warning or a hard error. If it is an error (not a warning), then the error is not allowed. The user has to remove or correct the data that is being entered or allow entry by acknowledging that it is not a duplicate. Maximum number of errors indicates the number of errors the system acknowledges, after which it is assumed, that it is not an error.

2. Select a contact and click **OK** to confirm. Thus spool file is generated and Match key is rebuilt.

Cross Reference

- CRO330 - Contact Duplicate Update
- CRW055A - Work with Contact